

72 acres, large farm house, buildings, gas well, gravel bank. No zoning.

Contemporary 2 story house, 4 bedroom, 2 bath, garage, new addition. 36x78 dairy barn, machine shed, fences. Two water wells. Approximately 20 acres wooded land, 42 tillable, most class 1 gravel soil. 1 mile from NY Route 60, 50 miles south of Buffalo, New York. **\$170,000**

716-595-3210
Lapp@netsync.net

64 ACRE FARM

MORRISONS COVE. Blair County PA
5-Bedroom Brick Home Barn & Outbuildings
RE/MAX RESULTS REALTY GROUP
Ask for Joyce @814-946-9355 ext 15

**PUBLIC AUCTION
100 ACRE DAIRY FARM
MONDAY EVENING, JULY 9, 2001
At 7:00 P.M.**

At the Bony Brook Farm located in Mifflin County, 3 miles south of Belleville, PA off route 655 on Bunker Hill Road, first farm on the left on Bony Brook Ln.



Located in the scenic Kishacoquillas Valley. Bounded by State Route 655 and township road, Bunker Hill Road. Approximately 85 tillable acres, very productive land. Includes a large bank barn with an attached 90 stall free-stall barn, three upright silos, a manure lagoon and several out buildings. The barn contains a flat parlor, 1,000 gallon bulk tank, a bunk feeder and conveyors. All brick farmhouse overlooks Kish Creek and a pond. The house has four bedrooms, one and one-half bathrooms and a closed in rear porch. A new septic system was installed during the past year. For more information call Mark Glick at 717/667-3795 or Kent Peachey or Randy Sheaffer at 717/935-2105.

Terms - \$25,000 down payment, balance upon settlement in 45 days. Buyer can take possession of buildings and pastureland at settlement. Buyer can take possession of cropland upon expiration of the current lease on November 1, 2001. Owner reserves the right to reject any or all bids.

Mark Glick, Auctioneer AU349-L
Valley View Haven,
Owner

**THE REAL ESTATERS
OF MANSFIELD**

1671 S. Main St., Mansfield, PA 16933
(570) 662-2138 • Evening (570) 662-2363
realmans@youu-net.com

BORDERS STATE FOREST

327+ surveyed acres bordering State Forest lands between Blossburg & Ogdensburg in Tioga County, PA. All wooded w/approved sewage site for pressure dose mound or privy. Was \$31,500. Reduced to **\$29,900!** M-1100

WOODED RETREAT

Remarkable cabin/home on 384 wooded acres in Ward Twp off Old Possessions Road on private joint-use road bordering State Forest 1/2 story w/many extras inside & out. Well, septic, elec & propane provide year-round use potential. Was **\$75,900, Now Just \$72,900.** M-1372

GREAT PRICE - BORDERS STATE FOREST!

13 surveyed acres in Hamilton Twp, south of Blossburg, PA. All wooded in deer, bear & turkey country! Approved sewage site w/privy 1,000 gal tank & top in place. **\$8,900 cash, or \$9,900 w/ \$1,900 down, bal 9% 4 yrs \$199.08 p/m** M-1006

BORDERS STATE FOREST!

228 acres bordering both Baldwin Run Road & private drive road in Delmar Township. Approved for in-ground septic, Owner financing **\$13,900 w/\$2,780 down** Balance 15 yr amort 10% interest \$119.50/month 4 year balloon M-1456

RUTLAND TOWNSHIP LOG CABIN

Bordering Bailey Creek Road 10 03 acres of woods & fields w/stream thru back. Existing septic system & electric. Also borders Jackson Center AKA French Hill Road. **Just \$44,900.** M-1418

NEW HOME & ACREAGE

2 yr old 1,456 sq ft ranch home on 11 wooded acres in Lawrence Twp. Full poured concrete bsmt ready to finish 4 bdrms & 2 baths. On-site well & septic. Gravel road w/school bus pick up out front. **Just \$95,000.** M-1423

15 LOTS - DISCOUNTED PRICE!

35 02 wooded acres directly across road from Hills Creek Lake & State Land. Frontage on 2 roads. Surveyed into 15 lots w/roughed in road thru middle. Approved sewage sites on all lots including several in-ground conventional. All utilities available. **\$135,000.** M-1254

CAMP ON 11.59 ACRES

Frame 1/2 story camp in Rutland Twp. w/loft & deck. All wooded & surveyed 11 595 acre tract bordering Painter Run Road & private 50 ft joint-use right-of-way. Approved sewage site. Elec nearby, buried phone on-site. **Just \$44,900.** M-1470.

**Kenneth H. Greider, Realtor
FARMS FOR SALE**

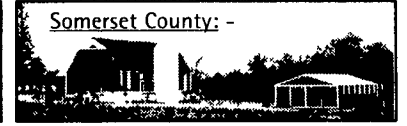


Huntingdon Co. - 310 acre one of a kind farm with 200 tillable acres. Acres of beautiful mountain ground and fenced pastures. Good quality soils with excellent hunting and peace and quiet. Main home built in 1929 by fine craftsmen with beautiful wood floors and trim, pocket doors, laundry chute to basement, butler's pantry and entry to dining room, stained glass windows and two fireplaces. 1900 sq ft with four bedrooms and 1 1/2 baths. This home has unlimited potential and is in fair-good condition. Second home is a frame two story in good condition with three bedrooms and 1 1/2 baths. 50x90 two story bank barn with 36 tie stalls, pipeline milking system and loose housing. 44x50 lean to with 21 free stalls and equip storage area. 20'x60' concrete silo with unloader feeds into an 80' covered bunk with 40 headlocks. Milking equipment includes units and 750 gallon bulk tank - all go with farm. Barns in fair - good condition and milked in three years ago. This scenic farm has frontage on Rt. 22 two miles west of Water Street. 40 minutes to State College, 25 minutes to Raystown Lake and Altoona. This farm is perfect for a quiet country residence and dairy/livestock expansion. **\$835,000**

Cumberland Co. - 140+/- acres bare land with 102 tillable acres adjacent to 2 500 acres of State Game Lands. Perfect for a country residence to enjoy the wildlife of your own new farm buildings. Located three miles North of Newburg. Tillable land lays nice for farming. **\$350,000**



Franklin Co. - 180 Acre Dairy Farm with 120 tillable acres. Limestone soil with seven bedroom two bath brick home in good condition, 3780 sq ft 50'x70' Bank barn in poor condition. 48x120 single story 86 stall free stall barn with 40'x80' double four parlor with holding area. Dairy milked in three years ago and facilities & equip in fair condition. Partially covered 100 feed bunk. 300,000 gallon earthen manure storage. Three earthen sided concrete bottom trench silos. All parlor equip goes with including take-offs, unit, pumps and 2000 gallon bulk tank. Four miles north of Shippensburg. Land lays nice for farming. With a little work you could milk your cows here. **\$555,000**



Somerset County: - Are you looking for large acreage in a good farming area? Here it is. 500+/- acres with 350 tillable acres. Fenced pastures. One good two story house and one in fair condition. One bank barn set up for a 50 cow tie stall herd. Large equipment shed. One bank barn set up for efficient heifer raising. All tillable land is in excellent condition. 12 miles south of Somerset. Close to all farm services. More tillable land available. Perfect for dairy or beef expansion. **\$970,000**

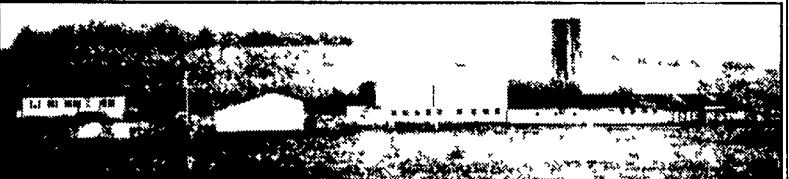
- These three farms touch each other to provide 515 tillable acres -

• 180+/- acres with 100 tillable bare land. Stream frontage - Tillable land is in excellent condition. Perfect location for home or farm buildings. **\$305,000**



• 124+/- acre general farm with 65 tillable acres. Fenced pastures. 1400 square foot four bedroom, one and one-half bath frame, two story farmhouse in fair to good condition with aluminum siding and replacement windows. 50'x80' two story bank barn in good condition. Two 12'x50' concrete silos in fair condition. 56'x64 pole storage building / shop in good condition with coal furnace. This property is adjacent to the 500 acre farm listed above. A quiet Township road. This farm is perfect for a quiet country part time farm or is additional acreage for a larger operation combined with the two farms above. **\$285,000**

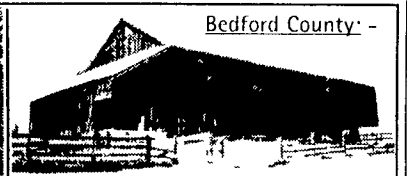
Where else in PA could you find this many acres in a farmer friendly area?



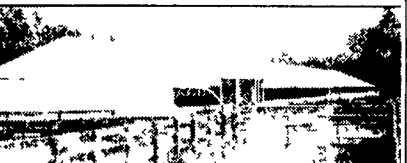
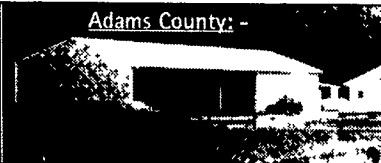
• 40+/- acre dairy farm ready for your cows and family. 25 tillable acres. 1300 sq ft, three year old ranch home in perfect condition. Three bedrooms, two baths and a full basement. 44x224 dairy complex set up for Jerseys with 60 tie stalls under the pipeline. 26 additional tie stalls could be tied into pipeline system. A good gutter cleaner runs behind all 86 stalls dumping into a gravity flow, earthen manure storage. There is an additional loose housing area and a 20'x70' concrete silo with unloader. Dairy equip goes with farm and includes a good 1,250 gallon bulk tank. 46'x56' shop/storage shed. Dairy buildings are in fair/good condition. This set up was milked in one year ago. Local farm ground is available to rent. Price **\$255,000**. Eight miles south of Somerset.

Do you want to move right in and start milking cows?

• 300 acre dairy farm with 210 tillable acres. 5 bedroom 2 bath brick, two story home in fair-good condition. 120 cow free stall barn with underground manure storage. 60 stalls in good shape, with another 60 onsite ready for installation. Double six parlor. All facilities in working condition. Large two story bank barn. Two concrete 24'x70' silos, one 20'x70' sealed silo. 20'x90' concrete bottom trench. Farm goes with all feed inventories, TMR mixer, milking equipment. 83 acres of planted corn and 20 acres of planted oats and 107 acres of established hay. Tillable land in excellent condition. Last year this farmer averaged well over 20 tons of corn silage per acre. **\$650,000**



Bedford County: - 326+/- Acres, 110 acres tillable, 140 acres fenced pasture. 70 acre wooded. More could be farmed. 2,700 sq ft mid 1800's brick farm house. 40x90 equip storage with heated 25x40 shop. 46'x105 bank barn. All in very good condition. Excellent location for dairy/livestock expansion. 13 miles west of Bedford. **\$505,000**



Adams County: - 11 Acres with 10,900 bird heavy hen turkey complex on contract with Pilgrim's Pride. Built in 1995. With 40'x60' machinery shed and 40'x40' heated shop. No dwelling. In excellent condition. Near Fairfield. **\$355,000**

• 32 Acres bare land, partially wooded. Perfect for home site and farmette. Near Orrtanna. **\$162,500**

• 13 Acres bare land now used as a cherry orchard. Beautiful setting. Near Orrtanna. **\$105,900**

Lancaster County:

A picture perfect farm! 73 Acres near Elizabethtown. 68 tillable acres. 3100 sq ft two story stone home built in 1799 in perfect restored condition. 1300 sq ft tenant house in excellent condition. 300 sow farrow to finish hog complex currently used for contract finishing. 60,000 bu grain storage with dryer truck scales, feed mill and feed transfer system. Two large equipment sheds and bank barn. One of a kind farm, well cared for. **\$1,150,000**



John Mattilio (717) 464-8930
Farm Real Estate Sales Professional.
Knowledge + Service + Integrity = Performance

RE/MAX • RE/MAX • RE/MAX • RE/MAX • RE/MAX • RE/MAX

RE/MAX

COUNTRY REALTY, INC
421 LWE, McConnellsburg, PA 17233

SHADE GAP, PA - \$375,000
Huntingdon County- Farm 116 Rolling Acres - stream - beautiful restored 2 sty farmhouse - somewhat remote. Good beef farm, large barn & outblgds.

MIFFLIN CO. - \$249,900
2 Mi N of Newton-Hamilton THIS IS IT! 1/2 Mi of Riverfront - Sportsman's Dream! - 62 Acres of Wooded Land - Lovely Home on Riverbank - Outblgds Great Hunting & Fishing - Private

HUNTINGDON CO. - \$259,900
5 Mi S of Mt Union Livestock or Grain Farm, Borders Augwick Creek - Level Fertile Land. Lovely Large 2 Sty Home - Bank Barn & Several Outbuildings

FULTON CO., PA, WARFORDSBURG - \$595,000
150 Acre Sportsman's Dream Joins PA Game Lands. Privacy with Mt views. Large house barn & outblgds

WARFORDSBURG, PA. FULTON CO. - \$229,000
43 Acre farm with lovely 2 sty farmhouse - Several outblgds

WARFORDSBURG, PA
Several wooded & open parcels. 2 1/2 to 12 acres - Good Hunting area. Priced **\$23,900 to \$52,800.**

TOLL FREE 888-799-0504
Each Office is Independently Owned
717-485-5911
421 LWE McConnellsburg, PA
Call Ronald L. Richards, CRS-GRI
ALL OUR LISTINGS ON INTERNET
MEMBER MRIS
Serving MD, DC, VA & PA

RE/MAX • RE/MAX • RE/MAX • RE/MAX • RE/MAX • RE/MAX

Lucas Co. IA - 320-ac. grain farm 279 6 ac - till Nice 3 bdrm ranch home w/full basement, 2 car garage 10000 bu storage, 8 ac pond, extensive terraces. Very nice! Cheap at **\$1350.00/ac.**

Lucas Co. IA - 238 ac. CRP farm 200 6 ac in CRP at \$75.94 till 2009 44'x99' Morton shed, new pond. Best returning farm we have! **\$845.00/ac.**

Wayne Co. IA - 200 ac Sportsman's farm 90 1 ac in CRP at \$70.00/ac till 2007. Majestic Oaks with lots of wildlife. A special unit! **\$750/ac.**

Wayne Co. IA - 118 ac grain farm 105 9 ac tillable. Very good soils. Great value at **\$1,095/ac.**

Lucas Co. IA - 80 ac grain farm 65 7 ac tillable **\$840.00/ac.**

Lucas Co. IA - 109 ac mini farm 58 4 ac tillable. Balance pasture. Older home, solid barn, 20'x40' Morton Bldg. Great place to start or retire. **\$1,095/ac.**

Lucas Co. IA - 505 ac cattle farm. A true showplace with 1 mile Hwy frontage. Nice set of bldgs, including nice home, lg. barn, lg. machine shed, 150' fence line bunk, 30000 bu storage, several ponds. Priced to move quickly at **\$1,063/ac.**

Wayne Co. IA - 354 ac combination farm 204 3 ac tillable 95 5 ac in CRP to 2005 **\$595.00/ac.**

Wayne Co. IA - 181.9 ac CRP/pasture 84 3 ac in CRP 4 ponds. Nice investment **\$695.00/ac.**

Decatur Co. IA - 919 ac combination farm 221 4 ac tillable. Balance pasture and nice timber. Modest set of bldgs. This one works well! **\$675.00/ac.**

Lucas Co. IA - 40 ac with 2 bdrm, ranch style home. Full basement. **\$94,900.**

Lucas Co. IA - 199 ac pasture/grain farm. **\$695.00/ac.** Only 1/4 mile from above farm

Lucas Co. IA - Approx. 12 ac w/3 bedroom ranch home, 500 hd hog finishing unit, 500 hd nursery, 32000 bu grain storage, machine shed. This unit has received exceptional care. Lots of potential w/adjacent cropland available for lease. Great base unit for **\$179,900.**

KENT FARM MANAGEMENT & REAL ESTATE
923 Braden, Chariton, IA 50049
Dan E. Kent, Broker
Days - 641-774-8676 Eves - 641-766-6160
Review these units and other farms on www.lucasco.net/kentfarm