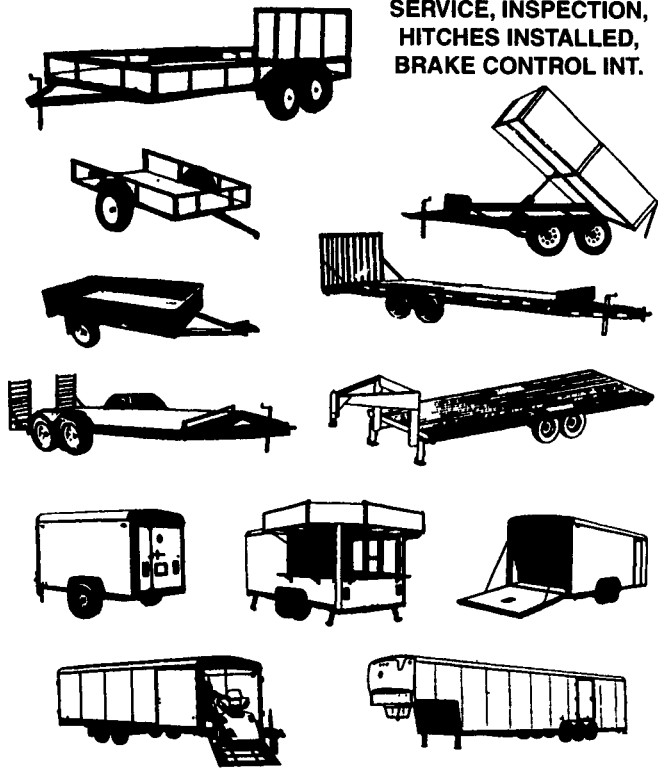


# MGS CAN MATCH THE TRAILER TO THE JOB!

TRAILER • PARTS,  
SERVICE, INSPECTION,  
HITCHES INSTALLED,  
BRAKE CONTROL INT.

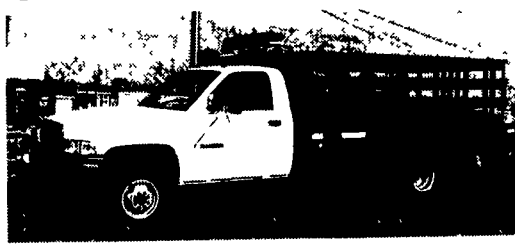


178 MUDDY CREEK CHURCH ROAD, DENVER, PA 17517-9386  
(717) 336-7528 • FAX (717) 336-4655  
800-952-4228  
Website: [www.mgsincorporated.com](http://www.mgsincorporated.com)

**JUNE SPECIAL \$650**

4'W x 8' L Deck  
Galvanized Frame  
3/4" Treated Deck  
Tilt Bed

## USED TRUCKS FOR SALE



**1997 DODGE RAM 3500 DUALLY  
12 FT. STAKE BODY**  
Cummins Turbo Diesel, 4x4, 5-Spd, A/C, Lift Gate,  
8 Ft Plow, 39,347 Miles  
**\$21,950**

**1994 DODGE RAM 2500, 2WD, Cummins Turbo Diesel,**  
AT, A/C, C, 109K Miles, Black **\$9,800**

**1994 NISSAN EXT. CAB 4X4, 4 Cyl, 5-Spd, A/C,**  
109K Miles, Green **\$7,900**

**1991 CHEV 2500 4x4, V8, AT, PS, PB, Snow Plow, Met**  
Green, 189K Miles **\$3,900**

**1990 CHEV 30 VAN BUCKET TRUCK, V8, AT, PS, PB,**  
32 ft Boom, White, 123K Miles **\$7,950**

**1986 FORD F350 DUALLY, 2x2, AT, A/C,**  
100K Miles **\$4,750**

**1990 FORD F350 12 FT. CUBE VAN, V8, AT, PS,**  
PB, 7 KW Generator & Air Compressor in Van,  
142K Miles **\$6,900**

**1988 CHEV C30, 12 ft Bed, 121K Miles** **\$1,950**

**SCHAEFFERTOWN  
AUTO & TRUCK SALES**  
Rt. 501, 1-1/2 miles South of Schaeffertown  
**717-949-2812**

Appalachian Manufacturing, Inc.  
330-222-2468



20,000# G V W  
Oil Bath Axle  
10K Dual Tandem Trailers - Spring Assist Ramps  
Pintle Pull, 18x5, Dovetail **\$4,750**  
Gooseneck, 20x5 **\$5,000**



24' Gooseneck, 4' dovetail, 1-12,000# G V W, 6,000#  
axels w/easy lube, electric brakes, 7 50-16 tires,  
breakaway kit, ramps w/pressure treated deck,  
standard 12,000 GVW **\$2,995**  
14,000 GVW **\$3,195**



16' Car Hauler, diamond plate deck with W/D rings,  
self storing ramps, 7,000# G V W, elect. brakes, both  
axels 82" between wheel wells, breakaway kit incl  
16' Car Trailer **\$1,495** 18' Car Trailer **\$1,645**



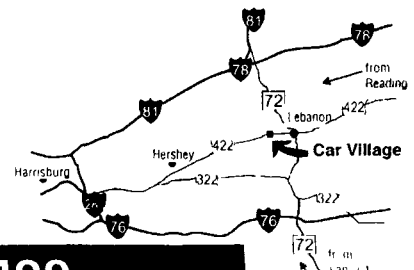
21' Low Profile, 10,000#, axel w/easy lube, elect  
brakes, pressure treated deck, 10,000# G V W,  
gooseneck **\$3,100**  
Bumper pull **\$2,950**

**Business Hours:**  
Mon.-Fri. 9 to 9;  
Sat. 9-4

2300 W.  
CUMBERLAND ST.  
(Rt. 422)  
LEBANON, PA 17042  
(Across From  
Lebanon Valley Mall)

# CAR VILLAGE

## HEAVY DUTY TRUCKS



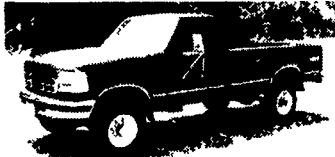
PHONE 717-274-2000 Toll Free 1-800-650-1420



**4 DOOR STAKE BODY 96 CHEVY K3500**  
Great Tk For The Work Crew, 8 Foot Body, Ladder  
Racks, Removable Sides, High Output, 6.5 Turbo Diesel,  
AT, A/C, Only 59,000 Miles



**550 CREW CAB CHASSIS  
4 WHEEL DRIVE 1999 FORD**  
Very Rare Find, XLT Powerstroke, Auto, 17,500 GVW,  
Trailer Tow Mirrors, New Truck Warranty



**MECHANIC'S SPECIAL • 95 FORD F350 4X4**  
1 Ton Pickup, Solid Front Axle, Powerstroke Turbo  
Diesel, 5 spd A/C, Lock-Out Hubs, Dual Tank, 1 Owner  
Trade, Asking \$12,900



**6 SP 4x4  
2000 FORD F350 SUPER CAB DUALLY**  
Opening Rear Doors, Strong Powerstroke Turbo Diesel  
6 Sp, A/C, Capt. Chairs, Console, Loaded, XLT,  
Limited Slip Axle, Tow Pkg, New Tk Warranty



**1 TON DIESEL - 99 FORD F350 4x4**  
Powerstroke Turbo Diesel 6 Sp Trans, Trailer Tow Pkg  
3 73 Limited Slip Axle, Heavy 9 900 GVW  
Alum Wheels Ready To Go



**REAR LIFT GATE 2000 FORD E350 CUBE VAN**  
Like New, Only 12,000 Miles, Powerstroke Diesel,  
AT, A/C, 11 Ft Body, Roll Up Rear Door,  
New Tk Warranty



**4x4 STAKE BODY DUMP  
98 DODGE 3500**  
Only 36,000 Miles, Remainder New Tk Warranty,  
24 Valve Cummins, Diesel, 5 Spd, A/C, 12 Foot Body



**ONLY 10,000 MILES • 2000 FORD F350 SUPER  
CAB DUALLY 4 WHEEL DRIVE**  
Like New, IT's Perfect Powerstroke Diesel, AT, XLT  
Lariat Pkg, Full Power, All Options Tow Pkg,  
Aluminum Wheels



**2000 DODGE 2500 SL  
QUAD CAB**

Like New, Only 27,000 Miles,  
Remaining New Truck Warranty.  
24 Valve Cummins Turbo Diesel,  
5 Sp, A/C, Front & Rear Dana  
Axles, Limited Slip Axle, Tilt,  
Cruise, Tow Pkg, Nice Truck!  
Great Price!  
**Priced Right \$26,900**



**DRIVES LIKE A CAR WORKS LIKE A TRUCK.**  
2001 FORD F150 SUPER CREW XLT  
Only 6,000 Miles Remaining New Tk Warranty Loaded  
XLT, V8 Auto Alloy Wheels, Sliding Rear Window &  
Much More, Come See & Drive!



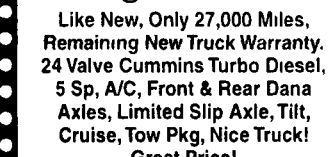
**MECHANIC'S BODY, 97 FORD F350**  
The Nicest Around Only 36,000 Miles, Gas, V8,  
11 Ft. Body, Ladder Racks, Tow Pkg



**FLATBED DUMP  
97 FORD F350**  
Very Clean, Only 50,000 Miles, 351 Fuel Inj.,  
V8, AT, 9 Ft Steel Body



**4x4 L-PAK 97 DODGE DUMP**  
Very Clean, Only 44,000 Miles, Cummins Turbo  
Diesel, AT, A/C, L-Pak Tool Boxes, Check It Out!



**BEAUTIFUL  
99 GMC K3500 4 DOOR**  
4WD, Only 13,000 Miles, All Remaining Fact Warranty,  
High Output, 6.5 Turbo Diesel, 5 Spd, Capt. Chairs,  
Console, Loaded, All Options



**4 DOOR F250 SUPER DUTY  
99 FORD 4x4**  
Triton 5 4 V8, AT, A/C, Loaded XLT, Factory Step  
Boards, Tow Pkg, Aluminum Wheels  
Only 28,000 Miles



**12 FT FLATBED  
98 DODGE 3500**  
Nice, Clean, Only 30,000 Miles, 24 Valve Cummins,  
Turbo Diesel, 5 Spd, A/C, 4 10 Gear, Tow Pkg



**4X4 FLATBED  
95 FORD F350**  
Strong & good looking, powerstroke turbo diesel,  
AT, Vinyl Seat & Floor, Limited Slip Axle, 8 Ft Body,  
Removable Sides



**\$21,900  
97 DODGE 2500 CLUB CAB 4x4**  
Cummins Turbo Diesel, AT, A/C, Laramie SLT Pkg, Fact  
Tow Pkg, Class 4 Hitch, Chrome Wheels, New Service &  
Insp., Ready & Waiting For You



**4 DOOR POWERSTROKE  
97 FORD F250 4x4**  
Super Clean, Only 35,000 Miles, Strong Powerstroke  
Diesel, AT, A/C, Easy To Clean Vinyl Seat & Floor  
Dual Tank



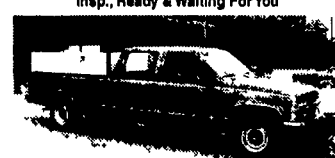
**4x4 DIESEL SUPER CAB  
99 FORD F250 XLT LARIAT**  
Nice Loaded, All Options, Powerstroke Diesel, AT  
A/C, Capt. Chairs, Console, Aluminum Wheels  
Tow Pkg, Remaining New Tk Warranty



**EBY FLATBED  
2000 FORD F-550 SUPER DUTY**  
Great Hauling Machine, Only 6,900 Miles, Powerstroke  
Diesel, AT, A/C, Capt. Chairs, Console, 6-Way Power  
Driver Seat, Gooseneck Ball, heavy 17,500 GVW



**ONLY 17,000 MILES  
97 FORD SUPER DUTY DUMP TRUCK**  
L-Pak Tool Box, Triple Tipper Box, Fold Down Sides,  
Powerstroke Diesel, 5 Sp, A/C, Like New



**WORKING MAN'S 4-DOOR  
94 CHEVY C-3500**  
4 Door, Local 1 Owner Trade, Only 60,000  
Miles, 350, V8, Auto, Vinyl Seat & Floors



**4 DOOR POWERSTROKE  
99 FORD F250 QUAD CAB**  
4 Wheel Drive, Farm Style, Vinyl Seat & Floor  
Tow Pkg, Strong Powerstroke Diesel A/C



**5 SPEED CREW CAB • 95 FORD F350 DUALLY**  
This is One Awesome Towing Machine, Powerstroke  
Diesel With Banks Power Pak - 5 Spd - 4 10 Gear  
Gooseneck Hitch, Only 41,000 Miles, Aluminum Wheels



**RARE FIND 99 MITSUBISHI FUSO**  
4WD, Only 7,000 Miles, Turbo Diesel, 5 Spd, A/C,  
12 Ft. Steel Body



**FLATBED DUMP 95 CHEVY W-4 (ISUZU)**  
Turbo Diesel, AT, 12 Ft Steel Bed, Tie Down Straps,  
Great Fuel Mileage, Easy To Drive



**CLUB CAB UTILITY 97 DODGE 2500 4X4**  
Here's A Rare Find, Strong Cummins Diesel, AT, A/C,  
Only 42,000 Miles, Limited Slip Axle,  
Clean Omaha Box



**6 SPD POWERSTROKE  
99 FORD F250 QUAD CAB**  
4 Wheel Drive, Farm Style, Vinyl Seat & Floor  
Tow Pkg, Strong Powerstroke Diesel A/C



**4 DOOR F250 99 FORD**  
4 Wheel Drive, Plenty of Room For The Family & Power  
To Tow, Remaining New Tk Warranty, Only 30,000 Miles,  
Powerstroke, Turbo Diesel, AT, A/C, Loaded & Nice