

## St. Louis Feeder Cattle

Greenville, IL

June 28, 2001

Report Supplied By USDA

Cattle and calves: 825 head. Compared to last week, slaughter steers and heifers were mostly 2.00 lower, except holstein steers opened fully steady and closing sales were weak to 1.00 lower. Supply was mainly Choice and Select and Choice slaughter steers and heifers. Moderate supply of holstein steers.

Total Receipts this week: 825 Last week: 800 Last year: 800

**SLAUGHTER STEERS:** Choice 2-4 1000-1475 lbs 71.00-74.00, 2-3 and Fancy 2-4 1025-1475 lbs 74.00-76.00; Few Prime 2-4 1175-1425 lbs 76.00-78.00. Select and Choice 2-3 1000-1375 lbs 68.00-71.00. Select 2-3 975-1275 lbs 65.00-68.00.

**HOLSTEIN STEERS:** Choice 2-3 1300-1600 lbs 68.00-71.00, closing 68.00-70.00. Prime 2-3 1350-1800 lbs 71.00-72.00, early closing sales 70.00-71.00. Select and Choice 2-3 1200-1600 lbs 65.00-68.00. Select 2-3 1200-1600 lbs 61.00-65.00.

**SLAUGHTER HEIFERS:** Choice 2-4 1000-1325 lbs 71.00-74.00; 2-3 and

Fancy 2-4 1125-1350 lbs 74.00-76.00. Few Prime 2-4 1100-1325 lbs 76.00-78.00. Select and Choice 2-3 975-1225 lbs 68.00-71.00. Select 2-3 875-1225 lbs 65.00-68.00.

**HEIFERETTES:** Medium and Large Frame 1150-1500 lbs 51.00-60.00.

**FEEDER CATTLE:** Compared with last week, feeder steers and heifers were fully steady. Overall quality was comparable to last weeks level. Supply around 50% Holstein feeder steers. Large buyer attendance.

**FEEDER STEERS:** Medium and Large Frame 1-2: Thin: 300-400 lbs 100.00-110.00, fancy 110.00-116.00 400-500 lbs 96.00-104.00, fancy 104.00-106.00 500-600 lbs 91.00- 99.00, fancy 99.00-104.00 600-700 lbs 86.00- 92.00 Moderately Fleishy: 300-400 lbs 95.00-101.00 400-500 lbs 90.00- 96.00 500-600 lbs 84.00- 91.00

Holsteins Large Frame 2-3: 200-300 lbs 100.00-110.00 300-400 lbs 94.00-101.00 400-500 lbs 88.00- 95.00 500-600 lbs 82.00- 88.00 600-800 lbs 74.00- 82.00 950-1100lbs 64.00- 66.00 **FEEDER HEIFERS:** Medium and Large Frame 1-2: 300-400 lbs 95.00-103.00 400-500 lbs 91.00- 99.00 500-600 lbs 87.00- 94.00 600-700 lbs 83.00- 90.00 Moderately Fleishy: 300-500 lbs 85.00- 95.00

**COW/CALF PAIRS:** Large Frame 3-10 yrs old 640.00-780.00/pr. Medium to Large Frame 4-10 yrs old 560.00-650.00/pr.

**BRED COWS:** Few Small to Medium Frame 4-8 yrs old in 2nd and 3rd stage 425.00-560.00/hd.

Slaughter Cows and Bulls: 175 head. Compared to last week, cows were mostly 1.00 higher. Bulls were 4.00-5.00 higher.

**SLAUGHTER COWS:** % Lean Weight Price Breakers 75-80 % 850-1200 lbs 46.00-50.00 Boners 80-85 % 850-1200 lbs 48.00-52.00 High Yielding 80-85 % over 1100 lbs 50.00-53.00 Lean 85-90 % 850-1200 lbs 44.00-47.00 85-90 % 750-850 lbs 40.00-44.00 85-90 % under 750 lbs 36.00-40.00

**BULLS:** Yield Grade 1-2 1075-2250 lbs 56.00-60.00; Yield Grade 1 1400-1925 lbs 60.00-61.00.

## Four States Livestock

Hagerstown, Maryland

Report Supplied by Auction

June 27, 2001

**SLAUGHTER COWS:** 57 HEAD, STEADY. BREAKERS 48.00-54.00, BONERS 47.00-52.00, LEAN 42.00-47.00, THIN AND SLOW 42.00 DOWN. **BULLS:** YG#2 1380 LBS. AT 57.50.

Lancaster Farming, Saturday, June 30, 2001-A15

## Marshall Weekly Feeder Cattle Sale

Marshall, Va.

June 26, 2001

Report Supplied By USDA

**FEEDER CATTLE:** 64 head. Prices per cwt. based on in weights.

**STEERS:** 232 head. Med. and Lge. 1. 400-500 lb 94.50-101.00; 400-500 lb 99.00; 500-600 lb 87-89.50. Small 1, 300-400 lb 74.00. Med. and Lge. 2, 500-600 lb 87.00.

**HOLSTEIN STEERS:** 22 head. Med. and Lge. 2. 200-300 lb 96.50; 1100 lb/up 55.00.

**HEIFERS:** 29 head. Med. and Lge. 1: 300-400 lb 91-97.00; 400-500 lb 88.50-93.00; 500-600 lb 88.50. Small 1: 300-400 lb 72.00; 400-500 lb 69.00. Med. and Lge. 2: 300-400 lb 88.00; 400-500 lb 82.00; 500-600 lb 70.00.

**BULLS:** 12 head. Med. and Lge. 1. 500-600 lb 82-98.00. Small 1: 400-500 lb 68.00; 500-600 lb 76.00. Med. and Lge. 2: 400-500 lb 82.00; 700-900 lb 66.50.

## Middleburg Livestock Auction

RR3 PO Box 185

Middleburg, Pa. 17842

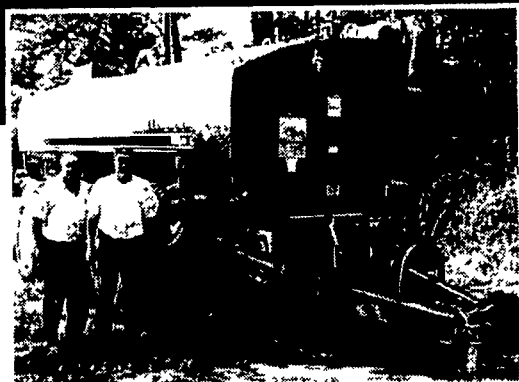
Report Supplied by Auction

June 26, 2001

**SMALL RABBITS:** 75-2.75. **MEAT RABBITS:** 3.75-6.00. **GUINEA PIGS:** 1.00. **DUCKS, MUSCOVY DRACKS UP TO 9.00, HENS:** 3.00. **PEKIN DUCKS:** 2.50. **GESE:** 2.00-2.50. **TURKEYS YOUNG:** 5.00. **PEACOCKS:** NONE. **ROOSTERS, LARGE:** 6.00. **ROOSTERS, BANTAMS:** 2.00-4.00. **HENS:** 3.00-5.00. **HENS, BANTAMS:** 2.00-4.00. **DUCKLINGS:** .50-4.00. **GOSLINGS:** 4.00. **OTHERS, MIXED DUCKS:** 2.50-4.00; **HEN WITH PEEPS:** 3.50-4.50; **GUINEAS:** 4.00; **WHITE PIGEONS:** 3.75; **BARN PIGEONS:** 2.00; **FERRETS:** 31.00; **HAMSTERS:** .75; **GUINEA CHICKS:** 2.50; **MEXICAN QUAIL:** 3.00; **JAPANESE QUAIL:** 5.00; **FINCHES:** 8.00.

**"We enjoy the staff at Mid-Atlantic. They're good, honest, and straightforward people."**

- Ray Smith



Ray Smith (left) of Triple S Farms, Beauville, NC. "Cleans Up" with help from Mid-Atlantic.

one 3,850 gallon spreader. In addition, we own several Houle lagoon pumps

**Q:** What would you consider to be benefits of doing business with Mid Atlantic?

**A:** We enjoy the staff at Mid-Atlantic. They are good, honest and straightforward people. They have always been upfront with us, and often advise us as to what equipment and procedures will work for us, and what won't work. They believe in providing honest advice - not just making a sale. I highly recommend their parts department as well. They are very knowledgeable and are always available by phone when you need them, with answers to all of your questions.

**Q:** Please explain your business.

**A:** We are a custom cleaning business, specializing in complete close-outs of hog lagoons in Eastern North Carolina.

**Q:** Which of Mid-Atlantic's services to you use most often?

**A:** We buy our equipment from them, as well as our parts. We presently operate two 6,300 gallon Houle Spreaders with self-loading capability, one 6,000 gallon and

**Mid-Atlantic AgriSystems is #1 in parts and service for liquid waste handling on your farm.**

- Trained, experienced sales and service staff
- Fully-stocked parts and service department
- New and used equipment sales
- Long and short-term rental equipment

**Mid-Atlantic has the solution**  
**1-800-222-2948**

Top Volume Dealer  
**HOULE**  
In the United States  
2000

**Cadman**  
POWER EQUIPMENT  
**RAISER INC.**

MID-ATLANTIC  
**agri systems**

4019 Ashville Rd  
Quarryville, PA 17566  
www.midatlanticagri.com

## Lancaster Poured Walls

- Agriculture
- Commercial • Residential

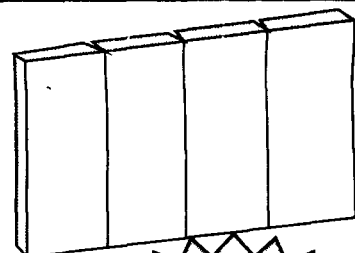
Call for Prices On:

- NRCS approved Manure Storage Pits
- Basements
- Footers
- Retaining Walls
- Foundation Walls

Customer Satisfaction Is Our Goal

**Lancaster Poured Walls, Inc.**

2001 Jarvis Rd. • Lancaster, PA 17601 • (717) 299-3974

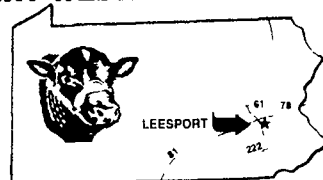


Concrete Pumping Available  
28 Meter Boom Pump



## LEESPORT FARMERS MARKET

LEESPORT, BERKS COUNTY, PA 19533 (610) 926-1307  
**LIVESTOCK AUCTION**  
EVERY WEDNESDAY - 1:00 P.M.



Farmers Market 9:00 AM to 8:00 PM  
Flea Market 7:00 AM to ??

**Special Appearance July 11, 2001**  
to Celebrate Our 54th Anniversary

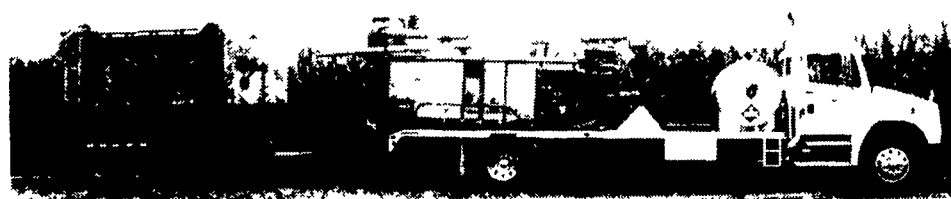
**The Mountain Folk Band**  
Featuring Bluegrass,  
Folk, Mountain,  
Hoedown and (Outdoor)  
Music

• Plus additional entertainment •  
6:30 pm till 9:30 pm

**FREE ADMISSION!!!**

visit our website: [www.leesportmarket.com](http://www.leesportmarket.com)

**The ROAST-A-MATIC Grain Roaster & Cooler Unit is superior to other methods of heat processed grain**



~ Prevents deterioration of elevator legs from hot grain condensation ~ Saves handling time ~ On the farm drying

Have your soybeans, corn, wheat, oats, sorghum and barley, roasted, cooled and stored on your farm  
**SCHNUPP'S GRAIN ROASTING, INC.**

416 Union Rd., Lebanon, PA 17046  
**1-800-452-4004 717-865-6611**

David N. Groff  
Rt. #3, Lewisburg, PA 570-568-1420

Contact us for the availability of roasted corn and soybeans.

- ~ Brings hot roasted grain to ambient temperature
- ~ No condensation on top of grain
- ~ Quality control - no hot spots from improper cooling
- ~ Grain can be put into storage cold