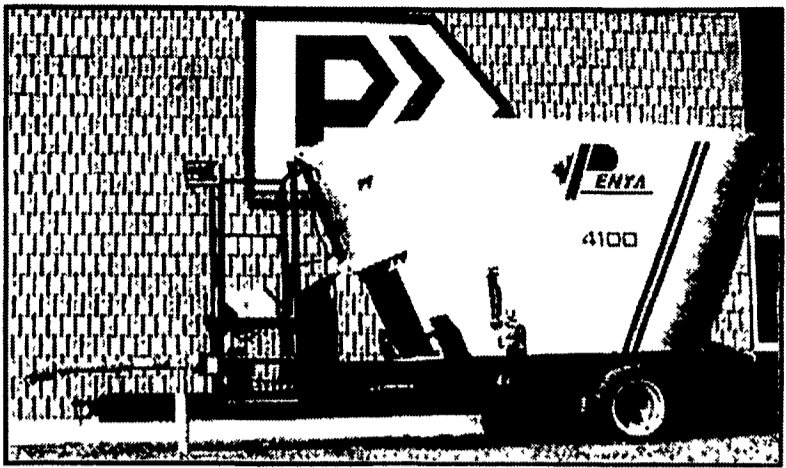


# PENTA VERTICAL MIX MODEL 4100 & 5600



7 Years Experience in Vertical Mixers

- Features**
- 5 year pro-rated warranty on gear box
  - 3 year warranty on Digistar Scales
  - Stainless steel conveyor trough
  - Extra heavy duty frame
  - 42" wide side door
  - 4-16 ply tires
  - Epoxy paint

MODEL	4100	5600
Capacity cu/ft	410	560
Overall Height	93"	100"
Overall Length	216"	216"
Discharge Height	28" to 54"	28" to 54"
Conveyor Width	36"	36"
Auger Flites	5/8"	5/8"
Side Wall	1/4"	1/4"
Floor Thickness	3/4"	3/4"
Horsepower	70 min.	80 min.
2 speed gear box	option	standard
Weight (empty)	8,790	9,560

Call Us For Demo and Pricing

## LEBANON VALLEY IMPLEMENT

700 E. Linden St., Richland, PA 17087

**717-866-7518**

Hours: Mon.-Fri. 7:30-5; Sat. 7:30-12

Farmall 200 w/or without WF or Fast Hitch  
Nice Farmall M with Live Hydraulic

- Quick attachloader for IH 684, 784 84 hydro
- Good Allis 6 cyl dsl, like in a Series III 190
- Ford 4000m 3 cyl diesel
- NI 709 Uni w/767 chopper, 3RW & N head
- NI 709 4WD w/839 husker
- Real nice, NI 717 combine w/713 or 813 grain table
- NI 708 4 wheeler
- NI 737 huskers & corn heads
- NI 818 & 819 combines
- Farmall M w/live hyd, refurbished
- 800C w/Cummins
- NI Uni gear boxes, trans, final drives most anything in parts

**R.B. Leaman**  
717-399-4037

### 1A CONSTRUCTION EQUIPMENT

**For Sale:**



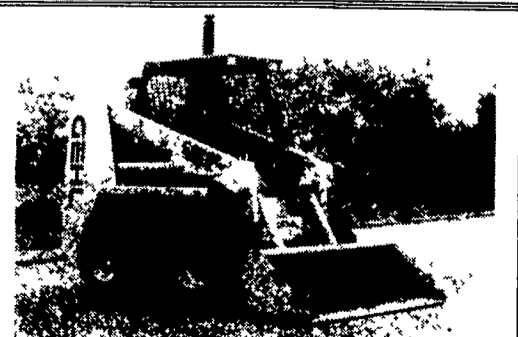
**Komatsu Excavator PC 38UU**  
with blade & rubber tracks, 8500 lbs.  
\$14,500 717-336-7436

**1988 Dresser 175C**



Call 717-665-2872

700 Hrs on Good UC, New Pins, Six Cylinder Turbo, New Service and New Seals..\$24,500 OBO  
Excel. Cond Fresh Paint Crawler Loader



**Gehl 5625 SX**  
Skid Loader 824 hrs. \$12,900  
717/484-2233

### WHITE BUSH HOG

#### USED EQUIPMENT

- Deutz DX120 Tractor, 4WD
- Case 2390 Tractor
- White 271 20" Disc
- Bush Hog 3210 126" Rotary Cutter
- NI 484 Baler
- White 5100 6R Liquid
- Kinze 6R Planter
- Gleaner 6R 30 Hugger Head
- NI 5112 Mower Conditioner
- Hesston 1160 14' Windrower
- Fox 2200 Forage Harvester
- Miller Pro Forage Boxes in Stock
- IH 6200 Drill
- Massey 1080
- Allied 6x50' Auger

**STANLEY'S FARM SERVICE**  
RD Box 46  
Klingerstown, PA  
570-648-2088  
WE ALSO STOCK  
NEW VICON

**ATTENTION FARMERS**  
If you have deteriorating concrete masonry or stone walls, have it repaired with **GUNITE®**

For Information and estimates call **Martins Silo Repair**  
**(717) 445-9834**

**2 FARM EQUIPMENT WANTED**

### 1B SPECIALITY FARM EQUIP

Paper Bedding Equip: Paper shredders, balers, conveyors, blowers. All eq. needed to make paper bales. Best offer. 717-626-4334

### 2 FARM EQUIPMENT WANTED

WANTED Allis chalmers, Late model 185 & AC 500 Loader. 215-257-7262.

NH 30 blower 610-273-2947.

Scrapor Blade, Belly and Front Mount, Farmall Super A, 804-436-1811.

## WANTED:

## USED FORD & KUBOTA TRACTORS

Call 1-800-309-FORD  
Daytime (3673)

### 1A CONSTRUCTION EQUIPMENT



**1987 Case 580-E Backhoe Loader, Diesel, Shuttle, Enclosed Cab, Extindahoe, 4900 hours, Newer Paint, Good Condition, Runs and Works Great! Work Ready! \$10,900.00 steals it! Double-D-Auto Sales 717-774-5590 York County**

### Case Equipment

- 584B Construction King Forklift, 4000lb capacity, 28' lift w/10' Myers snow plow.....\$6,700
- 530 Loader w/Cab.....\$4,700
- 1000lb Horizontal Feed Mixer w/motor, complete.....\$577
- Forklift work platform, 10'H.....\$497

All Excellent Condition

**Wertz Lawn & Garden**  
Wernersville, PA  
610/780-3764

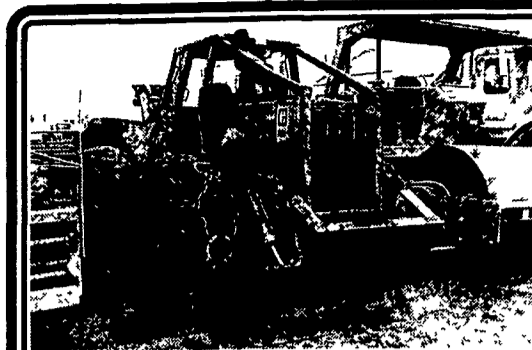


**1978 John Deere 450C crawler loader w/backhoe, crops, gp bucket w/teeth, v.g undercarriage & condition, work ready \$17,500 (301) 371-5500 (301) 662-0926 www.midmd.com**

**1979 John Deere 544B**  
Cab, 2 Yard Bucket, Rebuilt engine & Transmission, Recent Paint, New Michelin Radials, Excellent Condition  
\$24,000



(301) 371-5500 (301) 662-0926  
www.midmd.com



### 1981 Cat 518 Log Skidder

Vin #50S3198; Tires 23 1x26 w/Front Chains, Runs Good... Will Trade! .. \$16,500/OBO

**Curry Supply Co., Curryville, PA**  
1-800-345-2829

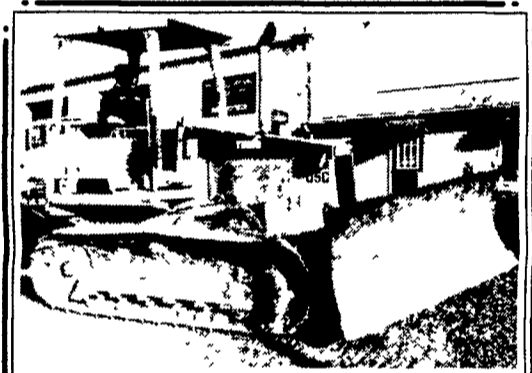


### 1989 John Deere 455G

500 Hrs. on New Engine, New Tracks and New Rollers; 20 Hrs. on New Sprockets, New Gaskets In The Hydraulics Cylinders and The Hydraulic Valve. New Paint.

**\$24,000 OBO**

717-656-4739



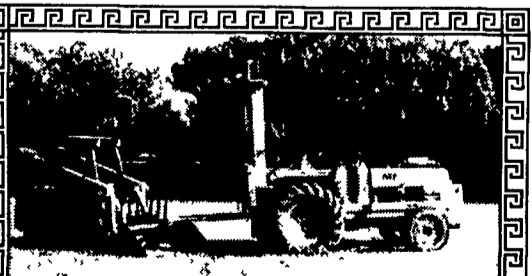
### Caterpillar D5C Crawler Dozer Pat

Blade, Low Hrs. - \$45,000 Rent or Buy  
**Heavy Equipment Loader Parts**  
Rt. 22 Grantville, PA 717-469-0039



**Cat 941/951 CRL Loader**  
5 Crawler Loaders To Choose From  
Fiat/Cat/Komatsu - Sale Or Rent

**Heavy Equipment Loader Parts, Inc.**  
10070 Allentown Blvd Grantville PA 17028  
No Sunday Calls (717) 469-0039



**Massey Ferguson 2500 Forklift** - Rough Terrain - Perkins Diesel - Side Shift - 10' Lift - 2400 hours - very clean machine. \$8,500 obo

**Gehl 4625 Skid Loader** - 400 hours - Bucket and Pallet Forks - Kubota Diesel - Aux. Hydraulics - Very tight - \$10,000 obo

410-398-3404