

Public Auction Register

Closing Date Monday 5:00 P.M.

of each week's publication

Internet Sale Register will be updated every Sat. at 2:23 P.M.

COIN AUCTION

RENTZEL'S AUCTION BARN

TUES., JUNE 26th @ 5:00 PM

Doors Open @ 3:00 PM Day Of Auction

LOCATED: 1-1/10 Mile N. of Manchester, PA along Rt. 181 (North George Street Ext.), in York County. Turn right at gray rock Auction Barn Sign.

**OUTSTANDING PRIVATE COLLECTION
425 LOTS OF COINS & CURRENCY**

Over 100 Silver Dollars Starting From 1878, 150+ Silver Half Dollars Starting From 1906, Uncirculated Franklin Half Dollar Rolls & Others, Barber & Mercury Dimes, Indian Head Cents 1857FE Cent, 1808 Half Cent, 1864 Two Cent, 1865 Three Cent, Proof Sets From 1954 To 1982, Mint & Special Mint Sets From 1964 To 1982, Eisenhower 40% Silver Dollars, Bulk Lots & Much More.

TERMS: Cash, Good Check, Visa, Mastercard & Discover

Phone (717) 764-6412

For A Complete Listing

Auction Conducted by:
Rentzel's Auction Service
Blaine Rentzel, Dave Conley,
Todd Hatterer #RH-000026-L

FRI JUNE 29 - 4 PM Power Tools, Hand Tools & Antique Tools, 12' Sears Game-Fisher w/Trailer & Cover Schoeneck Fire Hall, 272 N from Eph to Schoeneck Rd., turn left & follow Schoeneck Rd to Fire Hall Sale for Harry Duskel & others Clair L. Bard Auct Svc.

FRI JUNE 29-8 30AM Major Liquidation auction, Letterkenny Army Depot, Chambersburg, Pa cons equip, welders, ground s maintenance equip J.G Cochran Auct AU003314

FRI JUNE 29 - 11AM Doview Farms Inc., Complete Dispersal Seneca Falls NY 250 Holsteins 125 freestall cows & 125 heifers 34 years AI breeding, 34 years on DHIA, RHA 21,000 A Top freestall herd The Cattle Exchange

FRI JUNE 29 - 9 PM Tractors Construction Equip Antique Tractors, Farm Machinery, + Misc To be held at our yard Rt 38 & 38B, Newark Valley NY, 19 miles west of Binghamton Goodnch Auct Svc, Inc (607) 642-3293

FRI JUNE 29 - 6PM Tack, 7 PM Horses Penns Valley Livestock,

Centre Hall Mel Hoover Auct

SAT JUNE 30 - 8 30AM 9th annual Benefit Consignment Auction household items, antiques, furniture, tools, farm machinery, farm supplies, lumber, material & sewing supplies, rest equip, nursery items At Lab Produce Auction along Reistville Rd, 1 mile W. of Reistville off Rt 501

SAT JUNE 30 - 8 30AM 9th Annual Benefit Consignment Auction Reistville, Pa horses, carriages, trailers, farm equip & more Russell Wolfe AU-0002636-L

SAT JUNE 30 - 8 30AM Farm equip, personal property, collectibles From Emigsville Exgt of I-83 in yor, west on Church Rd across Susquehanna Trail For David Fahs Nevin B Rentzel Zachery R Gross AU-2483L, AU-3206-L

SAT JUNE 30 - 8 30AM Refton Fire Co Consignment Sale 9 Church St, Refton, Lancaster Co, Pa Local Auct

SAT JUNE 30 - 9AM Car parts, car related items, & tools along Rt 625, New Holland Rd, Knzuers, Berks Co, Pa By Mrs Norman F Kohl Estate Dale L. Putt auct AU-000733-L

SAT JUNE 30 - 9AM 2000 Arctic Cat 500 4-Wheeler, Tools & equip, collectibles, gsmn From Selmsgrove take Rt 35 South/West through Kantz for Mildred Dreese and the late Harvey Dreese Kenneth E Hassinger AU-001532-L, Neil Courtney AU-002651-L

**PUBLIC AUCTION
WED., JUNE 27, 2001
@ 5:30 PM**

Murry Auction Emporium
23 N Water Street / Lititz, PA 17543
717-626-2636

Office Furniture & Equipment - computers, file cabinets (2 & 4 drawer - some oak finish), base cabinets, stock cabinets, numerous office chairs, desk and secretary chairs, lunch room tables and chairs, work tables on casters, small work station tables, computer work stations, desk lamps, service area desks, credenzas, computer stands and tables, cabinets (several 2 door metal - tan / black), dividers, U shape desks, metal desks (various sizes), oak finish desks, bulletin boards, pictures, folding tables.

This equipment is modern, clean and in good shape 10% Buyer Premium / Visa & Master Card

Elmer Murry Auctions, Inc.

-AU-648-L-

Professional Auctioneer, Appraiser and Advisor
Our Services Are Not a Sideline
(717) 626-2636 Fax (717) 627-6757

**PUBLIC AUCTION
JULY 4th, 2001
AT 9:00 A.M.**

**OF FARM EQUIPMENT,
TRUCKS, CAR, LAWN & GARDEN**

DIRECTION: Off US30 Wrightsville exit south cross over Rt. 462 on Cool Creek Rd, to right on Mt. Pisgah Rd (Sam Lewis Park) to right on Strickler School Rd, go 10 ft turn left to dirt road, straight to sale.

Cattle racks full size truck, Ford crimper, furring out plow, single shank subsoiler, 2 row Ford cult., Ford router, Sauder 8' blade w/hyd angle, running gear, Ford chopper, pasture 12' drag (like new), 2 9' 3 pt H/up Ford spring harrow, Oliver 4 row cult., Co-op 9' cult-packer, McCormick Deering 8' cult-packer, Farm hand-grinder mixer, 2 sets 20' tobacco ladders mounted on trailer, 30' New Holland Elevator, 50' J-D Elevator, 15A & 16A J-D chopper, 930 J-D roller hire, 2 house trailer frames w/axles, early wood meat locker (cooler works), lrg and small cast & wooden pulleys, 2 sets tobacco hoes, early table saw w/moving top, 13 disk J-D drill, Lely fertilizer spreader, 3 pt post hole digger, (3) woods C80 finish mowers, butcher top table, Rousseau boom mower 36" flail head, White 5400 4 row corn planter, 7800 Oliver gas combine w/13' grain head, White 704 corn head, White 13' grain head w/quick cut floating cutter bar, 1967 50 Chev 5 ton truck, Sidehill 6620 J-D combine, J-D 215 15' grain Hd w/float-ing cutter bar, 643 6 row corn head, 5' 1 ton J-D 444 4 row corn head, 3 pt H/up 55 gal sprayer, New Holland 57 3 pt Hay rake, 3 pt 5' grader blade, Oliver 3 pt dirt scoop, 3 round hay bale feeder, Ford 4 bottom plow w/auto reset w/hill side hitch, M-M corn sheller, 50' corn drag, 2 14' flat bed wagons, Alum corn drag, 3 pt pto Danuser post driver, Mackissic grinder mixer, 17' 5" Auger, 3 pt 200 gal sprayer, New Holland 707 1 row mounted corn chopper, Int. 3 pt pto corn sheller, Ford 2 row corn planter, J-D corn drag, Mini dozer w/3' mower & blade, 2 seed cleaners, 1 w/bagger, 2 horse drawn potato plows, 15' grain auger w/wooden shaft & wood flites, Lawn 36" pull disk, 36" York rake, lawn cart, 3 pt 1 row cultivator, 15" alum elevator, David-Bradley 2 wheel tractor w/attachments, 1977 Merc Marquis Cadillac w/65,000 original miles, Large 5' safe marked YCFU CO-OP, cattle head gates & others, Kubota 3 pt pto tiller, ABC 2 tub wooden washing machine, 1600 gal white (gas) water truck, Orchard sprayer, 2 10 ton dump truck hoist, 1988 & 81 Pontiac cars, very small amount on wagon & house hold items not listed to sell.

OWNER:

JOSEPH (Joe) ALMONEY JR.

(717) 252-3556

Not Responsible for Accidents Day of Sale

Terms: Cash or Approved Checks w/letter from bank

Refreshment Rights Reserved

Auctioneers: C. Butch Landis Lic #AU1167-L

Jeff Serner: Lic #AU2502-L

(717) 792-1919 or (717) 792-0429

CLIP & SAVE

COMPLETE AUCTIONEERING SERVICE

PUBLIC AUCTION

MONDAY, JULY 30, 2001 @ 6:00 PM

5 Parcels of Real Estate in

Anthony Township, Montour County PA

DIRECTIONS: From Turbotville take Rt 44 South of Exchange. At the square in Exchange turn left on Muncy/Exchange Road Travel 3 miles to auction on the right. Signs posted

REAL ESTATE

Parcel #1: 3.64 Acres with a 2 Story, 3 Bedroom Home with Kitchen, Dining Room, Laundry Room, & Bath. Extras include a Barn for cattle or horses

Parcel #2: 6.84 Acre Building Site. The acreage is open and has absolutely fantastic views Perc'ed and ready to build.

Parcel #3: 14.45 Acres Semi Private Acreage is open & has very nice views of the countryside. Perc'ed and ready to build.

Parcel #4: 19.10 Semi-Private Acreage. 12 Acres wooded & 7 acres open Great Country Setting. Perc'ed and ready to build.

Parcel #5: .63 Acre Site with Existing Brick School House

All Properties have very nice country settings. Call for showing. Seller says sell. Parcels 1 through 5 will be offered individually. Terms: 10% Down, Balance in 45 Days. Terms day of auction take precedent.

KENNETH E. HASSINGER
RR 02, Box 985
McClure, PA 17841
(570) 658-3536
AU-001532-L

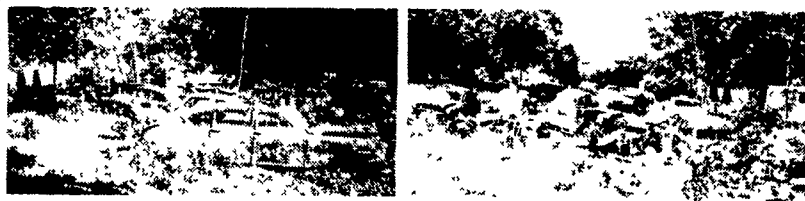


NEIL A. COURTNEY
R.D. #1 Box 239
Richfield, PA 17086
(570) 539-8791
AU-002651-L

PUBLIC AUCTION

**APPROX. 50 OLD CARS (MOSTLY 50'S);
CAR PARTS; CAR RELATED ITEMS & TOOLS
SATURDAY, JUNE 30, 2001 9:00 A.M.**

Located along Rt. 625 (New Holland Road), Knauers, Berks County, Pa (Near intersections of Routes 568 & 625 - near Griffith & Bixler Furniture Store). Watch for sale arrows.



**APPROX. 50 OLD CARS & TRUCKS FROM THE 50's
(MOSTLY FOR PARTS)**

Inc. Chevy's, American Motors, Pontiacs, Plymouth, Fords, Hudson, Packard, Woody Station Wagon, Ford Baker's Truck, Dodge truck, Studebaker Pick Up Truck, Model A Engines & Frames, Model T Frame & Wheels, Model A & T Parts; 1960 Chevy, Bear Telaliner, Loads and Loads of Old Car Parts, New But Old Car Parts, Lot of Carburetor's, Fuel Pumps, Radiators, Old Air Tire Meter, New but Old Tires, Large amount of Hubcaps, Old Car Horns & Headlights, Oil Tanks, Unusual Horse Drawn Cultivators & Planter; Corn Sheller, Mowing Machine, Grass Mower, Reel Mower Sharpener, Aluminum & Wooden Extension Ladders; Old Oil Cans with Names, Soda & Beer Bottles; Milk Bottles with Names, Old Chandeliers, Ice Tongs, Tin Adv Display Cases, Tin Adv Signs, Old Cash Register, Advertising Boxes, Egg Scales & Case, Advertising Yardsticks, Wooden rakes, Drawing Knives, Augers, Metal Planes, Drills & Bit's, 2-Man Saws, Stone Forks, Chain Hoists, Lto fo Pulleys, Load & Tire Chains, Galvanized Sprinkling Cans, Hunting Licenses in the 40's, Lot of Old Car Manuals, Sleds, etc **NOTE:** Come prepared, will need a rollback to remove cars and trucks. Items must be removed within three weeks from sale Not Responsible for Accidents Bring your lawn chairs Refreshments will be sold. If into 50's cars don't miss this sale

TERMS BY: MRS. NORMAN F. KOHL ESTATE

DALE L. PUTT, AUCTIONEER
AU-000733-L Phone Akron (717) 859-1430



**ANNOUNCES
A ONE DAY
UNRESERVED
ESTATE ANTIQUE
AUCTION**

FROM THE COLLECTION OF
ELSIE DOEHNE OF HARRISBURG, PA et al
WED., JUNE 27, 2001
9:00 A.M.

Exhibition: Auction Day Only 7:00 to 9:00 A.M.
To Be Held At: Gouglersville Fire Company (Banquet Hall), Just Off Route 222 And Mohn's Hill Road (5 Miles From The PA Turnpike Exit #21-Reading/Denver Interchange), Reading, PA
FURNITURE: Philadelphia Style Chippendale Chest On Chest; 2 Two Piece Corner Cupboards; Mahogany Needlepoint High Back Arm Chairs-Victrola-Bookcase Desk-Camelback Sofa-Highly Carved Chippendale Style Arm & Side Chairs-Bedroom Suite-Dressers-Tilt Top Tables; Walnut Victorian Chairs-Marble Top Tables-Inlaid Dining Room Suite-Dresser-Tall Case Clock Signed S. Kendall, Liverpool; Sheraton Style Chest Of Drawers-Wing Chairs; Oak Two Piece Leaded Door Cupboard-Pulpits; Lancaster County Dovetailed Smoke & Feather Decorated Blanket Chests; Pocket Watches; **GLASS-WARE:** Pattern-Pressed-Cut 15 Pieces Of Tulip Pattern Glass, Cut Trumpet Decanters, Satin Glass Rose Bowls; 15 Pieces Of Copper Lustre; Redware; Chalk Cat Bank; Danforth (Phila.) Pewter Soup; **CHINA:** Blue Staffordshire-30 Children's Verse & ABC Plates-Mugs-Gaudy Ironstone, Transferware; 40 Miniature Oil Lamps, Hooked Rugs; **ARTWORK:** David Brumbach (Lancaster, PA) "Devil Dancer"-Oils On Canvas By Paulette Van Roekens-Fred Wagner-Adam Pietz-15 Wallace Nutting Prints-Ward Bros. Duck Prints-Large Selection Of Various Artists Oils, Brass-Wrought-Cast Iron Pieces; Punched Tin & Wooden Foot Warmer; Antique Tools; Antique Reference Books; Sterling & Silver Plated Pieces and Many Other Fine Items Too Numerous To Mention. THIS IS A VERY PARTIAL LISTING MANY ITEMS ARE STILL BEING FOUND IN THE HOME. COME SEE WHAT WE FIND!!

Contact Auction Company For Brochure #27.

TERMS: Cash Or Approved Check With Bank Letter Of Credit.

AUCTION BY: Pennypacker-Andrews Auction Centre, Inc.
Cathy M. Pennypacker-Andrews
Lic. #AU-001254-L
P.O. Box 558, Shillington, PA 19607-0558
(610) 777-6121 or 777-5890