

St. Louis Feeder Cattle

Greenville, IL

June 14, 2001

Report Supplied By USDA

Farmers Livestock Market Assn auction at Greenville, IL Wed Jun 13, 2001

Cattle and calves: 740 head. Compared to last week, slaughter steers and heifers were 3.00-4.00 lower, except Holstein steers which were mostly 1.00 lower. Supply was mainly Select and Choice slaughter steers and heifers with a moderate supply of Holstein steers.

Total Receipts this week: 740 Last week: 860 last year: 745

SLAUGHTER STEERS: Choice 2-4 1025-1400 lbs 73.00-77.00, mostly 73.00-76.00; 2-3 and Fancy 2-4 1075-1400 lbs 77.00-79.00; Few Prime 2-4 1200-1425 lbs 79.00-80.00, few up to 80.50. Select and Choice 2-3 1000-1375 lbs 70.00-73.00. Select 2-3 1025-1350 lbs 66.00-70.00.

HOLSTEIN STEERS: Choice 2-3 1375-1900 lbs 68.00-71.00; Prime 2-3 1600-1800 lbs 71.00-72.00. Select and Choice 2-3 1250-1700 lbs 65.00-68.00. Select 2-3 1150-1400 lbs 61.00-65.00.

SLAUGHTER HEIFERS: Choice 2-4 975-1300 lbs 73.00-77.00, mostly 73.00-76.00, 2-3 and Fancy 2-4 975-1275 lbs 77.00-79.00; Few Prime 2-4 1075-1300 lbs 79.00-80.00. Select and Choice 2-3 950-1300 lbs 70.00-73.00. Select 2-3 925-1200 lbs 66.00-70.00. **HEIFERETTES:** Medium and Large Frame 1050-1600 lbs 50.00-60.00.

FEEDER CATTLE: Compared with last week, feeder steers and heifers were firm to 2.00 higher, except Holstein feeder steers were 5.00-10.00 higher. Overall quality was comparable to last weeks level. Large supply Holstein steers.

FEEDER STEERS: Medium and

Large Frame 1-2: Thin: 300-400 lbs 100.00-110.00, fancy 110.00-115.00 preconditioned 115.00-118.00 400-500 lbs 97.00-106.00, fancy 106.00-113.00 500-600 lbs 91.00-99.00 600-700 lbs 86.00-92.00 700-800 lbs 80.00-90.00 Moderately Fleishy: 300-500 lbs 91.00-101.00

Holsteins Large Frame 2-3: 150-200 lbs 140.00-150.00 200-300 lbs 101.00-113.00 300-400 lbs 95.00-105.00 preconditioned 107.00-121.00 400-500 lbs 88.00-96.00 500-600 lbs 81.00-88.00

FEEDER HEIFERS: Medium and Large Frame 1-2: Thin: 300-400 lbs 95.00-104.00, fancy 104.00-106.00 400-500 lbs 91.00-98.00, fancy 98.00-100.00 500-600 lbs 87.00-92.00, fancy 92.00-95.00 Moderately Fleishy: 300-500 lbs 85.00-95.00

Cow/Calf Pairs: Large Frame 3-10 yrs old 650.00-785.00/pr.

Bred Cows: Large Frame 3-10 yrs old in 2nd and 3rd stage 500.00-600.00/hd.

Slaughter Cows and Bulls: 125 head. Compared to last week, cows were unevenly steady. Bulls were weak to 1.00 lower.

SLAUGHTER COWS: % Lean Weight Price Breakers 75-80 % 850-1200 lbs 43.00-47.00 Boners 80-85 % 850-1200 lbs 45.00-52.00 High Yielding 80-85 % over 1100 lbs 47.00-53.00 Lean 85-90 % 850-1200 lbs 41.00-44.00 85-90 % 750-850 lbs 37.00-41.00 85-90 % under 750 lbs 33.00-37.00

BULLS: Yield Grade 1-2 1800-2300 lbs 48.00-54.00; Yield Grade 1 1600-2350 lbs 54.00-56.00.

Westminster Livestock

Hagerstown, Maryland

Report Supplied by Auction

June 12, 2001

SLAUGHTER COWS: 59 HEAD, **FLESHY COWS** 1.00 HIGHER.

BREAKERS 47.00-51.75, 1 AT 58.75, **BONERS** 44.00-49.00, **LEAN** 40.00-44.00, **THIN AND SLOW** 40.00 DOWN.

BULLS: 4 HEAD. YG#1 1400-1600 LBS. 57.75-61.00.

FED STEERS: 1.00-2.00 LOWER. **HIGH CHOICE TO PRIME** 1150-1450 LBS. 81.00-82.00; **CHOICE 2-3** 1050-1400 LBS. 75.00-80.00; **LOW CHOICE** 70.00-75.00; **HIGH CHOICE AND PRIME HOLSTEINS TO** 71.00; **CHOICE 2-3** 65.00-68.00, 1 OVER 1600 LBS. AT 60.50.

FED HEIFERS: 1.00 LOWER. 1 **PRIME** 1212 LBS. AT 81.25; **CHOICE 2-4** 1300-1400 LBS. 77.00-78.00; **CHOICE** 1000-1200 LBS. 69.00-76.50; **CHOICE HOLSTEINS** 1338 LBS. AT 63.00.

CALVES: 82 HEAD. **HOLSTEIN BULLS RETURNING TO FARM** 5.00-10.00 LOWER. #1 95-115 LBS. 155.00-167.00, 80-90 LBS. 127.00-147.00; #2 95-125 LBS. 112.00-150.00, 75-90 LBS. 85.00-110.00; **HOLSTEIN HEIFERS** #1 90-115 LBS. TO 485.00, #2 80-110 LBS. 385.00-450.00, 70-80 LBS. 130.00-185.00, 1 134 LBS. AT 180.00; **BEEF X BULLS** 190 LBS. AT 205.00.

BUTCHER HOGS: 43 HEAD. #1 AND 2 225-285 LBS. 47.75-49.00; #1 AND 3 45.00-47.50; #2 AND 3 1 LOT 266 LBS. AT 44.00.

SOWS: 300-500 LBS. 34.00-35.25.

BOARS: 1412 LBS. AT 24.75.

STOCK CATTLE: 50 HEAD.

STEERS 200-4 88.00-110.00, 400-700 LBS. 78.00-80.00; 2 **LIMOUSINS** 855 LBS. AT 79.00, 1950 LBS. AT 74.00.

HEIFERS: 400-600 LBS. 70.00-78.00, 800-900 LBS. 66.00-70.00.

BULLS: MED. AND LARGE FRAME 150-300 LBS. 105.00-117.00, 400-450 LBS. TO 105.00, 500-700 LBS. 74.00-85.00, 900-1000 LBS. 52.00-55.00.

SHEEP: 15 HEAD 30.00-43.00; **HEAVY WEIGHTS** 20.00-30.00.

LAMBS: 76 HEAD. **HIGH CHOICE TO PRIME** 90-110 LBS. 86.00-94.00, 70-85 LBS. 88.00-101.00, 50-70 LBS. 92.00-105.00.

GOATS: 130 HEAD. **LARGE BILLIES AND WETHERS** 75.00-109.00, **MEDIUM** 45.00-75.00, **LARGE NANNIES** 60.00-80.00, **MED. NANNIES** 40.00-65.00, **FLESHY KIDS** 25.00-40.00, **SMALL KIDS** 10.00-30.00.

PIGS AND SHOATS: BY THE LB. 25 HEAD. 14 HEAD 30-45 LBS. 109.00-114.00, **SINGLES** 110-150 LBS. 49.00-61.00; **STOCK BOARS** 250-280 LBS. 37.00-39.00.

Eastern Cornbelt Direct Sheep
Springfield, Ill.

June 8, 2001

Report Supplied By USDA

Eastern Cornbelt Direct Sheep Weekly Summary includes lambs sold in Illinois, Indiana, Ohio and Michigan. Compared to last week, slaughter lambs over 100 lb were 5.00 lower, light lambs steady. Demand was light for moderate supplies. Slaughter ewes were 2.00 lower with moderate supplies. Meat movement was reported sluggish. Sheep receipts consisted of 68% slaughter lambs and 32% slaughter ewes with an additional 725 head of goats. Total sheep and lamb sales: this week 1750 head, last week 1250; last year 2000. Prices per cwt.

SLAUGHTER LAMBS: Choice 2-3, 100-125 lbs new crop 75-80.00 few 82.00; 60-100 lb 85-92.00; old crop shorn 120-145 lb 73-78.00.

SLAUGHTER EWES: Utility 30-35.00; Cull to Utility 24-30.00.

GOATS: By the cwt: 90-120 lbs 50-60.00; 60-85 lbs 60-70.00; 30-60 lbs 80-105.00.

This report covers sheep and lambs sold direct off the farm through local country stations. Note: Receipts do not cover total movement in this area.

2001 STEVENS FIRE COMPANY

Antique Tractor Pull & Show

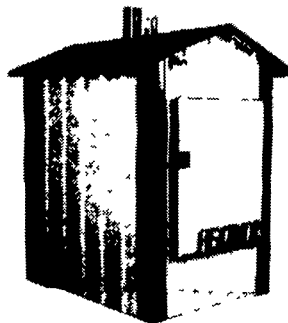
SAT., JUNE 23, 2001



Raindate:
June 30, 2001

ON THE CARNIVAL GROUNDS, STEVENS, PA
ANTIQUE TRACTOR REGISTRATION • TRACTOR GAMES - 10 A.M.
KIDDIE PULL - 10:00 A.M. • ANTIQUE PULL - 11 A.M.
KITCHEN OPENS AT 7:00 A.M. • ADMISSION \$3.00 per car • FLEA MARKET

HEATMOR Stainless Steel **OUTDOOR WOOD FURNACES**



- Heat Home, Hot Water, Outbuildings
- No Fire Danger or Chimney Worries
- Forced Air or Hot Water Heating
- 4 Sizes - 18 Colors
- Forced Draft - Ash Auger Clean-out
- Wood or Coal Grates
- High Efficiency - Clean Burning
- 10 Year Corrosion Warranty
- Financing & Dealerships Available

Staunton, VA Jamestown, NY
800-743-5883 888-763-8617

Outback Heating Inc.
Eastern U.S. Distributor

KEYS' ANNUAL TRADE IN SALE

It's Back! Sick of that old mower, tractor, ATV, trimmer, chainsaw, etc. Well get rid of it! Our trade-in deals will never be better and our prices never lower!



A TV's During our trade in sale we'll take anything on trade toward a New Suzuki Cars, guns, boats, snowmobiles, tractors, ABSOLUTELY ANYTHING OF VALUE!

WE NEED A.T.V. TRADES - WE'RE GUARANTEEING TOP DOLLAR ALL WEEKEND!!

Financing Available



...And You Thought You Needed A Tractor To Mow Your Lawn. Get to Keys' now for the best Spring Special ever on a new Suzuki!

2001 LT 4WD

4WD, can be run in and off of 4WD. Three Ranges, 15 Speeds ahead, Shaft Drive, 4 Stroke and Front & Rear Racks, Rear Hitch, High and Low Range.

Buy One Now And We'll Throw in a 10.5 HP 44" SWISHER MOWER



Now You Can Use That Suzuki For Work or Play All Other Suzuki's At Sale Prices

All This For \$4999⁹⁹

Plus we'll take anything on trade cars, guns, boats, ATVs, tractors ABSOLUTELY ANYTHING OF VALUE!!!

KEYS' HAZEN - RTE. 28 814-328-2222 • 814-328-2904
CLARION - RTE. 322 814-226-4444
Mon.-Thu. 8-7; Fri 8-7; Sat 8-5; Sun. 12-4
Clarion Store Closed Sundays

*To qualified buyers Not responsible for typographical errors
Checkout Our New Website at www.ke-srecreational.com

Remember, we finance, take trades, and will deliver anywhere!

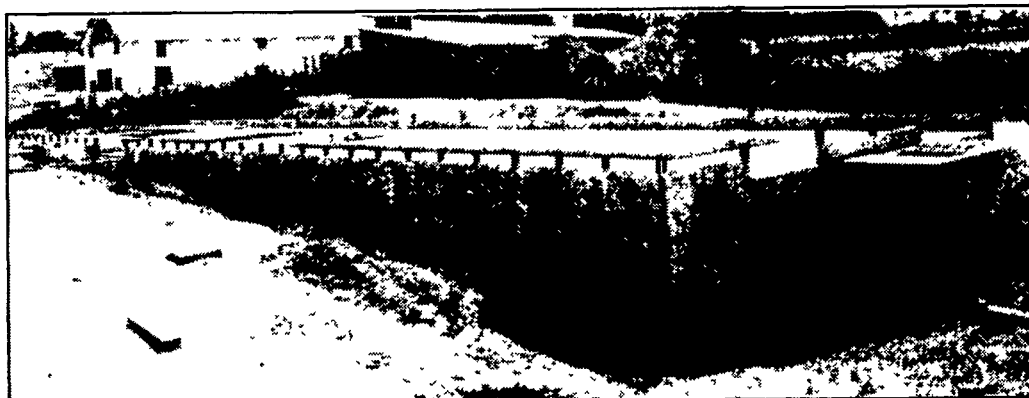
PRECISE CONCRETE WALLS, INC.

For All Your Concrete Walls And Construction Needs

Agriculture - Residential - Commercial

- Buildings • Basement • Floors
- Retaining Walls • Footer
- NRCS Approved Tank Designs
- All Types Of Flat Work

Specializing In **Manure Storage**
Round or Rectangular, In-Ground or Above-Ground



Slatted Pit For Free Stall Barn

Invest In Concrete, Quality Work That Will Last A Lifetime

CALL FOR **FREE ESTIMATES** AND SEE HOW AFFORDABLE CONCRETE WALLS CAN BE

CONTACT ROY SENSENIG 717-355-0726

Authorized Dealer For Keystone Concrete Products

PRECISE CONCRETE WALLS, INC.

601 Overly Grove Rd., New Holland, PA 17557