





**Obeco** **IT'S THE BEST PLATFORM MONEY CAN BUY... AND IT'S PART OF EVERY OBECO TRUCK BODY BUILT**

<p><b>OBECO STAKELESS</b></p>  <p>Maximum grain capacity Rugged construction 14-gauge, 60" seamless steel, Die-formed vertical ribs on 12" centers, 3-way rear-gate system Truck lengths 18', 20', 22', 24' Height 60"</p>	<p><b>STEEL CITY STAKES</b></p>  <p>Adapts perfectly to several hauling needs 16-gauge corrugated steel slats welded to 14-inch gauge steel stakes Lengths 8-24 feet Height 40" Also available with hardwood slats riveted to hardwood stakes</p>
<p><b>OBECO STEEL SIDES</b></p>  <p>Big load muscle 16-gauge, cold-rolled, die-formed, corrugated steel Optional fold-downs, top-tops Available lengths 8'-24' Available heights 40", 48", 54"</p>	<p><b>OBECO HOISTS</b></p>  <p>Matched to your hauling needs! Twin Cylinder models designed for bodies up to 24' and capacities of 32 tons Single cylinder hoists, up to 16', capacities up to 21 tons</p>

**Obeco UNI SYSTEM**

**ANNVILLE EQUIPMENT CO.**  
 470 Palmyra-Bellgrove Road, Anville, PA 17003  
 717-867-4631 1-800-233-0520  
 We provide parts & service for new leader spreaders.  
 Building the best since 1939.



**97 GMC G3500**  
 14' Box, 5.7 V8, 11,000 GVWR, A/C, White, 35,000 Miles



**97 GMC TOPKICK C5500**  
 w/22 Ft. Flatbed And Lift Gate, 18,000 GVWR, Allison Automatic, 70,000 Miles, White



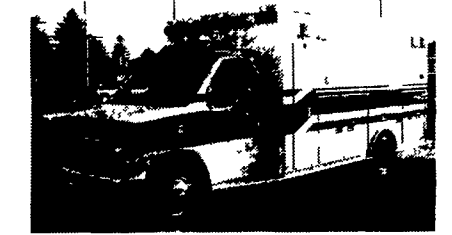
**00 GMC W4500 w/16' Dry Van**  
 Turbo Dsl, Auto O/D, 14500 GVWR, A/C, Aluminum Lift Gate, 15K Miles



**00 FORD F650**  
 18' Box, 5.9L Cummins AT 545, A/C, 26,000 GVWR, 1000 Original Miles



**99 FREIGHTLINER FL70**  
 w/10' Gallion Dump, 8.3 Cummins (225 HP), 6 Spd., 26000 GVWR, Air Brakes (Non CDL), A/C, Like New



**97 FORD E450 SUPER DUTY**  
 w/Medtech Type III Ambulance Module, 7.3 Powerstroke dsl, Whelen Siren & Emer. Lights, Vacuum Pump, CPR Seat, All Systems Working, 24k Original Miles, Like New

**30/Four Way** 770 W. Main, New Holland, PA 17557  
**Auto Sales** (717) 354-3199

PONTIAC • HONDA • GMC TRUCK • ACURA • USED CAR CENTER  
 1335 Manheim Pike • Lancaster, PA

**Jones**  
 QUALITY PRE-OWNED BEST BUYS!

Prices based on straight sale. Tax and tags extra. Trades accepted at actual cash value. Must present this ad at time of purchase for sale price.

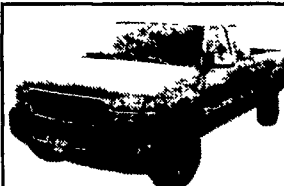
**JONES QUALITY PRE-OWNED BEST BUYS!**



**NEW 2001 GMC CREWCAB 4X4**  
 Auto, Air, 6.0 V8, Trailer Pkg., 8' Bed, MSRP \$32,384, #40057  
 SALE **\$29,999**



**NEW 2001 GMC K35 XCAB 4X4 DUALY**  
 AT, Air, 6000 V8, Trailering Pkg. & More. MSRP \$33,043, #30535  
 SALE **\$29,900**



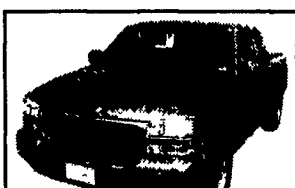
**NEW 2001 GMC K25 XCAB 4X4**  
 Auto, Air, 6.0 V8, 8' Bed, & Much More MSRP \$31,109 #30833  
 SALE **\$28,800**



**2000 TOYOTA TACOMA 4x4**  
 Auto, Air, 10K Miles  
 #9878 Was \$18,800  
 SALE **\$15,700**



**NEW 2000 GMC K15 XCAB 4X4**  
 8' Bed SLE, 5300 V8, Auto, Air, #29652 MSRP \$31,443  
 SALE **\$24,850**



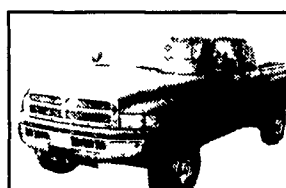
**1999 GMC K15 XCAB 4X4**  
 8' Bed, SLE, 350, Auto, Air  
 #9890 Was \$20,800  
 SALE **\$18,500**



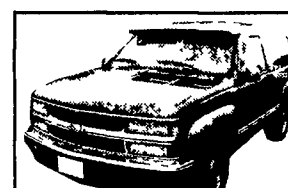
**1998 CHEV VENTURE**  
 4 Door, Auto, Air, V6, 7 Pas, 34K Miles  
 #9818 Was \$18,700  
 SALE **\$16,100**



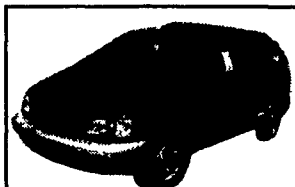
**1998 CHEVY ASTRO CARGO VAN**  
 Auto, Air, V6, Was \$12,500, #9811  
 SALE **\$9,950**



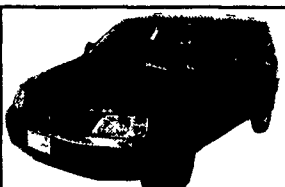
**1998 DODGE 2500 XCAB 4X4**  
 Auto, Air, SL, 5.9 V8, 37K Miles  
 #9848 Was \$21,900  
 SALE **\$19,900**



**1998 CHEV. TAHOE**  
 2 Dr, 4x4, LS, AT, Air, 350, Clean, Was \$20,700, #9870  
 SALE **\$18,700**



**1998 TOYOTA SIENNA VAN**  
 Auto, Air, V6, 7 Pass  
 Was \$24,000 #9798  
 SALE **\$21,700**



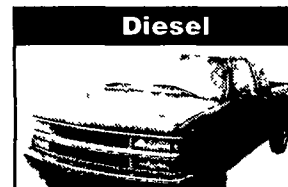
**1998 HONDA CRV EX 4x4**  
 Auto, Air, 4DR., 38K Miles, 5.9% Financing  
 Was \$18,800 #9801  
 SALE **\$17,200**



**1997 FORD F150 XCAB 4X4**  
 XLT, V8, AT, Air, 39K Miles  
 #9891 Was \$21,700  
 SALE **\$18,400**



**1997 JEEP GRAND CHEROKEE**  
 4x4, V8, Auto, Air, Laredo, Was \$16,500, #9872  
 SALE **\$13,450**



**1997 CHEV K25 XCAB 4X4**  
 Auto, Air, Silverado, 6.5 Turbo Diesel, Was \$17,000 #9840  
 SALE **\$15,500**



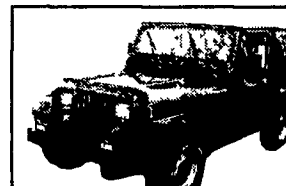
**1995 CHEV K25 SUBURBAN 4x4**  
 Diesel, 6.5 Turbo, LT, AT, AC  
 Was \$21,700 #9926  
 SALE **\$17,000**



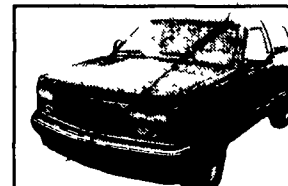
**1995 GMC K35 XCAB 4X4**  
 Diesel, AT, 6.5 Turbo, SLE, Air, Was \$15,500, #9877  
 SALE **\$12,990**



**1995 GMC K35 XCAB 4x4**  
 6.5 Turbo, Dually, SLE, 5 Spd, Was \$15,200 #9863  
 SALE **\$12,800**



**1994 JEEP WRANGLER**  
 4x4, Auto, Air, 4 Cyl, 46K Miles, Was \$11,400, #9875  
 SALE **\$8,950**



**1993 GMC SPORTSIDE K15**  
 Auto, Air, 350, SLE, Was \$13,800, #9871  
 SALE **\$9,990**