

Salesmen:  
Alvin Martin  
Bill Ryland



# WENGBERS OF MYERSTOWN

## FARM MACHINERY

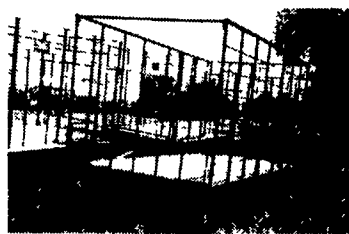
(717) 866-2135

# WOODS

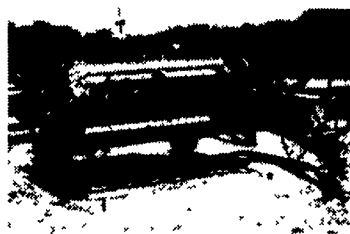
814 S. COLLEGE ST. (ROUTE 501)

www.wengers.com

MYERSTOWN, PA 17067



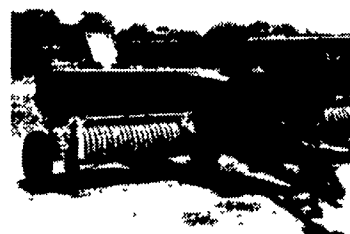
5) 8x18 Steel Rack Hay Wagons  
In Stock



NH 477 and NH 478  
7' Haybines In Stock



Ford NH 411 Discbine, Good,  
Repainted



NH 315 Baler w/Thrower, Sharp



Ford NH 575 Baler,  
w/ 1/4 Turn, Sharp



Brillion 10' Seeder w/Hyd.  
Transport & Acre Meter



Several Used NH, NI, MF,  
JD Hay Rakes

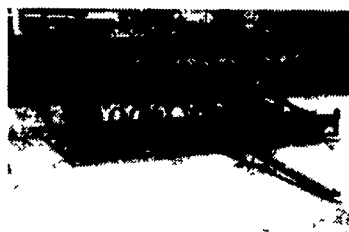
**BALERS**  
Ford NH 575 w/1/4 turn, sharp  
NH 311 w/Thrower, Nice  
NH 273 w/thrower, nice  
John Deere 338 w/40 ejector  
John Deere 336 w/30 ejector  
NH 66  
MF 124 w/thrower



1954 Farmall Super MTA,  
Aftermarket Wide Front End,  
Bad TA



New Holland 273 Baler  
w/Thrower, Good



John Deere 12' Roller Harrow,  
Also Have Others In Stock



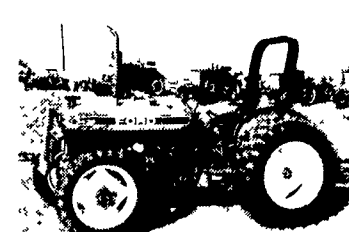
1959 John Deere 630, Power  
Steering, 3 Pt. Hitch, Fenders



JD 1219 9' Haybine  
In Good Condition



1958 John Deere 820, Pony Motor  
Start, Remote Hydraulics



Ford NH 3430 4x4, 38 HP,  
Very Nice

### COMPACT TRACTORS

Ford NH 2120 4x4 w/loader & backhoe  
(coming in)  
Ford NH TC29D 4x4  
Ford NH TC21D 4x4 w/blade  
Kubota 2350 4x4 w/loader  
Kubota L2900 4x4 w/loader  
Kubota BX2200 4x4 w/loader (coming in)  
Ford 2110 4x4 w/loader (coming in)  
Power King 2414 w/3 pt. & PTO  
Power King 2418 w/48" deck

### MANURE SPREADERS

Ford NH 145, sharp  
2) IH Cub Manure Spreader  
NI 351A Spreader  
NI 18 Ground Drive  
NI 17 Ground Drive  
NI 14A Ground Drive  
Gehl 425 Tandem Axle w/Top Beater  
& Tailgate  
NH 190 Tandem Axle w/Tailgate  
Pequea 50 & 70 ground drive  
Millcreek 125 PTO drive  
2) JD ground drive

### DISC HARROWS

IH 500 10' Cutting Disk  
White 271 18' Rockflex,  
JD 19' 220 Center Fold  
JD 1630 11' Cutting Disk  
3) JD 8' & 9' Disc  
2) JD 6' Offset drag disc  
Oliver 9' Transport Disk  
2) IH 10' Transport Disk  
MF 620 13' Rock Flex  
IH 8' FH Disk  
IH 8' Offset  
Ford 14' Disk  
3) Ford 8' 3pt Disc  
Case 8' Offset

### TRACTORS

Case IH 7120 4x4, 1995, 3600 hrs.  
IH 986, low hours, 1981, nice  
IH 1086, ROPS  
IH 1066, cab  
IH 1466, YAR cab  
IH 766, new paint  
IH 656, gas, cab  
IH 544, gas, try, nice  
IH 274 offset, hi-clear  
IH 154 lo-boy w/mower  
IH 240 utility w/FH  
IH 706D, WF, FH, poor cond.  
JD 4020 D side console  
JD 4020 D side console, hi-crop  
JD 3020 D side console  
JD 3020 D powershift  
JD 3020 G powershift, tricycle  
JD 3020 G tricycle  
JD 900 HC w/cultivator  
JD 2040 D w/loader  
JD 2510 G (coming in)  
JD 302D low utility  
JD 720 D try, 3 pt, pony start  
JD 520 try, 3 pt.  
JD 630 try, 3 pt, fenders  
JD 830 D, pony start  
JD 60 power steering  
JD A unstyled  
JD AR, restored, nice  
2) JD B, 1 is unstyled  
Ford NH 6610, turbo  
Ford NH 3430, 4x4  
Ford 3910 w/side sickle  
Ford 3600 D nice  
2) Ford 860  
Oliver 1655 D  
MM Super Jetstar 3  
Agco-Allis 4650, 40 HP air cooled  
AC D12 w/3 pt.  
AC D17D tricycle  
AC WD 45 diesel  
2) Farmall cub, any attach available  
3) Farmall Super A, attach available  
2) Farmall Super MTA  
Farmall H  
Farmall C  
5) Farmall 140 any attach available

### CHISEL PLOWS

AC 5T Soil Saker (Nice)  
Bush Hog 12T pull type chisel  
Bush Hog 8T 3 pt  
Chattanooga 11T 3 pt.  
Glencoe 10T 3 pt.  
IH 7T 3 pt.  
Case 5T 3 pt.  
Case 7T 3 pt.  
Case IH 5500 7T 3 pt.  
Rhino 5T 3 pt. Chisel

### HAYBINES, RAKES

5) NH hay rakes  
JD 672 Rake w/dolly  
2) NI 402 Rake, 1 w/dolly  
MF Hay Rake, Sharp  
Old IH & David Bradley side delivery rake  
JD Hay Fluffer  
JD 1460 Disc Mower Conditioner  
2) JD 1219 Haybine  
NH 411 Discbine  
NH 477 7' Haybine  
NH 478 7' Haybine  
MF 925 9' Haybine

### CULTIMULCHERS & PACKERS

Dunham 14' End Transport  
Brillion 12' Cultmulcher  
Brillion 13'8" Cultmulcher  
Dunham 12' Cultmulcher  
JD 14' end transport  
JD 12' cultmulcher  
Kewanee 10' Cultmulcher  
2) Brillion 16' Transport Packer, late style  
Brillion 10' Packers  
Brillion 12' Packers  
Brillion 14' end transport  
Brillion 3', 3-1/2' & 4' Packer Pups

### GRAIN DRILLS

JD 8200 21x10 DD soybean drill  
Case IH 5100 21x7 DD w/Grass & Press  
IH 510 13x7 SD w/Grass & Fert.  
JD FB-B 15x7 w/Grass  
JD FB 17x7 SD w/Grass & Fert  
Oliver 13x7 DD w/Grass & Fert  
Brillion 10' Seeder w/hyd. transport

### ROTARY and SICKLE MOWERS

Woods HD315 15' Batwing  
Woods 2126 10'6" Rotary  
Woods 208 8'4" Rotary  
3) Woods 7' Cadet Pull Rotary  
Woods RD 990 Estate Mower  
Woods 6' 3pt Rotary  
Woods 5' Snap Coupler Rotary  
Rhino 24' Turf Batwing  
Alamo 15' Turf Batwing  
Ford 7' Pull Rotary  
Ford 88" 3 pt. Flail Mower  
Bush Hog 12' 3 pt Rotary  
IH 5' Fast Hitch Rotary  
JD 6' 3 pt. Rotary  
JD 6' Pull Rotary  
King Kutter 5' 3 pt., 6' 3pt, 6' Pull  
Case IH 1300 7' 3 pt. Sickle  
4) Farmall Cub and Super A Sickle  
Ford 501 and 515 3 pt. Sickle  
4) JD 350 7' and 9' 3 pt. Sickle  
5) IH 7' Fast Hitch Sickle  
2) Kuhn 5'6" 3pt. Sickle  
2) NH 451 3 pt. Sickle  
2) NH 455 Pull Type Sickle

### HAY ELEVATORS

Buffalo Valley 20'  
Buffalo Valley 30'  
2) Hay Rite 16' Skeleton  
Little Giant 30' Corn & Grain  
2) NH 24' Elevator  
Zimmerman 22' Skeleton  
Zimmerman 46' Corn & Grain  
McCurdy and Little Giant Corn Drag

### MISCELLANEOUS

Case 1816C Skid Steer Loader  
Niemeyer 10' 3 pt rotterra  
Lely 13' Rototerra  
Howard 11' 3 pt HD rotovator  
18 4x38 Open Center Duals  
20 8x38 Open Center Duals  
Axle Duals to Fit JD 7400  
52" Woods 3 Pt Rototiller  
Woods 8' 3pt Blade & others  
Gehl 72 Flail Chopper  
JD 15 A Flail Chopper  
2 Horse Trailer  
Corn Pro 16' Stock Trailer  
Brady 722 Flail Chopper  
12) Gravity Bin Wagons  
Several Elevators  
Danuser post-hole digger  
Cub & Super A cultivators  
Several loader attachments  
Several Steel & Wood Hay Wagons  
2) JD 1065 wagon gears  
Woods 6500 & 7500 3 pt backhoe attachment  
Alamo 15' turf batwing  
Rhino 24' turf batwing

www.wengers.com

# STRIVING TO PROVIDE TOP QUALITY USED EQUIPMENT