



'74 Brockway  
 Rebuilt 290 Cummins, w/Jake Brake  
 PS, Rebuilt Walking Beam  
**\$7,900 • 717/336-7375**



1990 Rollback Cab Over Chassis, 6 Cyl Turbo  
 Dsl Air Over Hydraulic Brakes, No CDL  
 Required Great Truck For Rollback, State Body  
 Or Farm **\$7,900 OBO Call 717-665-2872**

35

**TRUCKS  
 AND  
 TRAILERS**



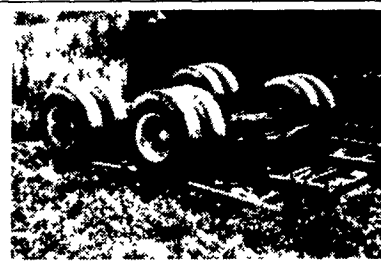
1994 Jerr Dan Rollback, 28' Main Bed,  
 13' Overhead, 3 Winches, Tow Bar,  
 Single Axle Setup **\$7,500**



1980 Kenworth W900A, 6V 92 Detroit,  
 Eaton 9 Sp w/PTO Rockwells, AC, PS,  
 Air Dryer, New Steering Tires, 3 New  
 Batteries, Rebuilt Alternator **\$7,500 OBO**



1990 E350 Ford Cube Van, 460 FI,  
 3 Spd O D Trans, Dually Rear, 6 New  
 Radials & Battery **\$1,850**  
 Whole Truck Or Will Part Out



Trailer Axles, Leaf Spring w/Air Bag, 8  
 New 8 1/4 x 16 5 **\$850**

**Chuck, 717-951-1937**  
 Lancaster, PA

7511 Allentown Blvd.  
 Harrisburg, PA 17112

**75 TRUCKS  
 IN STOCK**

**AFFORDABLE  
 CARS AND TRUCKS, INC.**

**717-652-1925**  
 FAX 717-652-4888

www.affordablecarandtruck.com

**"You Gotta Believe!!"**

Exit 27, Rt. 81; Rt. 22 East of Harrisburg; 3 Miles North of Hershey

**96 Dodge 3500  
 Dually SLT 4x4,**  
 Cummins Diesel,  
 5 Speed, every Option,  
 New Radials, Like New!  
 120K  
**\$16,500**



**88 Ford  
 F250 XLT**  
 H D, 4x4, Ext Cab,  
 7 3 International Diesel,  
 5 Speed, AC, PW, PDL,  
 2 Tone Paint, Absolutely  
 Flawless, 100,000 Miles!  
**\$8,995**



**95 Dodge Ram 2500**  
 4x4, Cummins Diesel, SLT Fully  
 Loaded, Your Choice of AT or 5 Sp  
**\$14,500 Ea.**



**97 Ford 250 XLT 4x4 H D**  
 7 3 Powerstroke Diesel, Low Miles  
 80,000, AT, AC, PS, Stereo, Cloth  
 Seat & More, Beautiful 1-Owner in  
 Mint Condition **\$15,995**



**94 Ford F250 XLT**  
 4x4, H D Bright Red, 8600 GVW,  
 AT, AC, V8, 351 Motor,  
 Real Clean Truck, 124,000 Mi  
**\$7,495**



**97 Ford F250 XLT Ext. Cab**  
 4x4, Powerstroke Diesel, 8800 GVW, 5  
 Speed, AC, PW,  
 PDL Alloys, Dark Red Metallic,  
 Beautiful 1-Owner Truck,  
 All Orig. Finish, 140K **\$14,995**



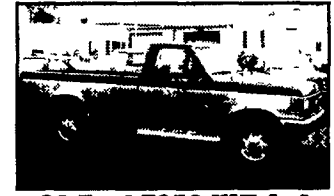
**93 Dodge Ram  
 250 Cargo Van**  
 Only 60,000 Mi, Very Clean  
 Condition, 318 V8, AT, PS, PB,  
 1-Owner **\$4,995**



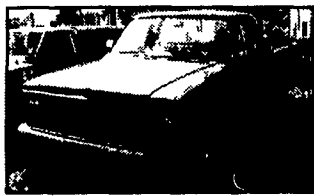
**95 Ford F250 XLT 4x4**  
 Ext Cab, H D, 8800 GVW, 5 8  
 351 Motor, AT, PS, AC, PW, PDL,  
 Stereo, 2 Tone Paint, Alloys, Mint  
 Condition, 70,000 Mi **\$13,995**



**95 GMC Yukon 4x4**  
 SLT 350 AT, Dual AC, PW, PDL,  
 105K, 2 Owner,  
 Extra Sharp Truck!  
**\$11,995**



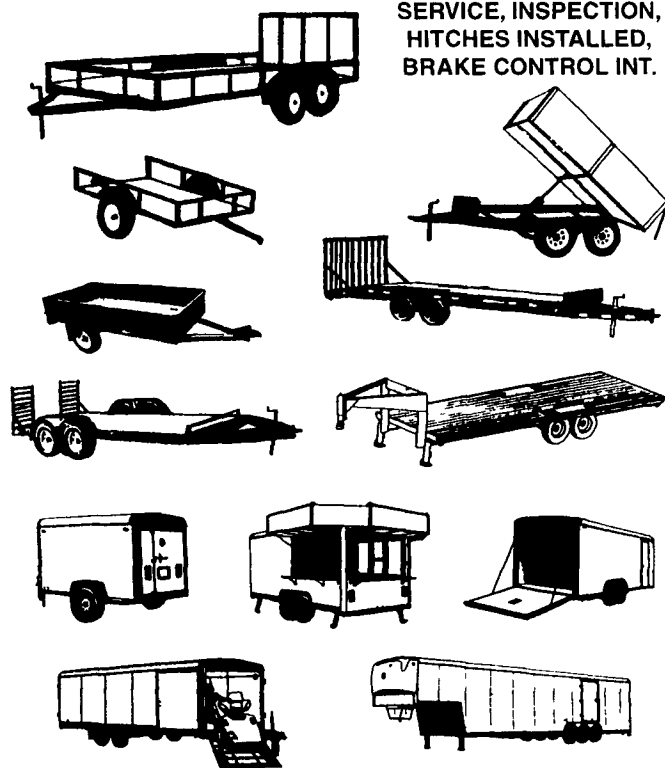
**89 Ford F250 XLT 4x4**  
 7 3 International Diesel, AT, AC, PW,  
 PDL, Stereo, Tilt, Cruise, 2-Tone  
 Paint, New PA Insp, Clean Truck,  
 Ready To Work!, 150K  
**Trade Special \$5,999**



**84 Chevy 1500 PU**  
 V8 Stick, Only 54,000 1-Owner Actual  
 Miles, Garage Kept With Never  
 Rusted Body, Mint Cond  
**\$2,500**

**MGS CAN MATCH THE TRAILER TO THE JOB!**

TRAILER • PARTS,  
 SERVICE, INSPECTION,  
 HITCHES INSTALLED,  
 BRAKE CONTROL INT.



178 MUDDY CREEK CHURCH ROAD, DENVER, PA 17517-9386  
**(717) 336-7528 • FAX (717) 336-4655**  
**800-952-4228**

Website: www.mgsincorporated.com



**NEW**  
**2001 GMC SIERRA 2500 H.D.,**  
 4x4, Crew Cab, SLE, Duramax Diesel,  
 Allison Auto, P-Seats, Trailing,  
 Cass/CD, The Ultimate Truck!!  
 MSRP 42,566 Sale **\$39,645**



**NEW**  
**2001 GMC 3500 H.D.,**  
 Chassis, 15000 GVW, 8100 V8,  
 Auto, AC,  
 Ready For Your Body!  
 MSRP 27,927 Sale **\$24,775**



**NEW**  
**2001 GMC 3500 4x4,**  
 Dually, 8100 V8, Allison Auto,  
 AC, Trailing  
 MSRP 32,141 Sale **\$28,675**



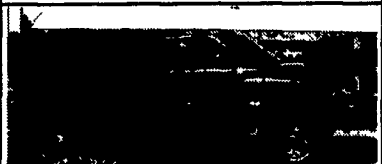
**NEW**  
**2001 GMC 2500 H.D. 4x4,**  
 Crew Cab, 6000 V8, Auto, AC,  
 Cruise, Cass, Trailing  
 MSRP 32,592 Sale **\$29,330**  
*(10) Other Crew Cabs Available!!*



**1994 CHEVY 1500 EXT. CAB 4x4,**  
 Conversion 350 V8, Auto, AC PW,  
 PL, Cruise/Tilt, Cass, Custom Leather,  
 Custom Paint Super Sharp! Hurry!  
 Only **\$13,950**



**1994 CHEVY K1500 SILVERADO,**  
 4x4, V8, Auto, AC, PW, PL,  
 Cruise/Tilt, Cass Tu-Tone!  
 Won't Last Long  
 For Only **\$11,950**



**1996 DODGE RAM 2500 H.D.,**  
 4x4, Club Cab, Laramie SLT, Turbo  
 Diesel!!! Auto, PW, PL, P Seat, Cruise,  
 Tilt, Cass, Super Sharp, Runs Beautiful!  
 A Lot Of Truck For Only **\$17,987**



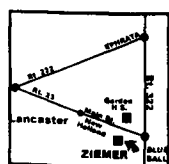
**1996 GMC 2500 H.D. SLE,**  
 Ext. Cab, Turbo Diesel, Auto, AC,  
 PW, PL, P-Seat, Cruise/Tilt, Cass,  
*None Nicer! If You See It,  
 You'll Buy It!* Only **\$19,987**



**2000 DODGE RAM 1500 SLT,**  
 V8, Auto, AC, PW, PL, Cruise/Tilt,  
 Cass, Low Miles!  
 As New As It Gets!  
 Only **\$16,987**



**1999 GMC Suburban SLE, 4x4,**  
 V8, Dual AC, P/W PL, Cruise/Tilt,  
 P-Seat, 3rd Seat, Boards,  
 Beautiful!  
 Reduced To **\$23,900**



Just 20 minutes  
 from Lancaster!

**NEW HOLLAND**

Hours: Mon.-Thurs. 9-8:30  
 Fri. 9-6 & Sat. 9-3

www.ziemernewholland.com  
**Ziemer**  
 A Name You Can Trust

BUICK PONTIAC GMC TRUCK

**354-4451 • 1-800-824-2277**

**We Are  
 Trucks!**