

Daily National Grain Market Summary
St. Joseph, MO
May 30, 2001

Report Supplied By USDA

Daily National Grain Market Summary

Grain bids were slightly higher with light support from crop ratings figures and export sales. Wheat finished steady to 4 cents higher. Corn 1 to 4 cents higher. Sorghum 1 cent higher. Soybeans 1 to 3 cents lower.

Wheat bids finished higher as cheaper grain prices looking attractive to export buyers. Corn prices closed slightly higher as production and weather items remain negative with good top soil moisture, in the Corn belt areas. Soybeans bids lower after yesterday's planting progress showed no change from last week. Rain makes grain but dryer weather could be beneficial to soybean seeding and overall crop development. EXPORT SALES: PURCHASER COM-MODITY TONNAGE DELIVERY DATE CCC Georgia Hard Red Winter 10,800 June Egypt Soft White 60,000 Jul/Aug South Korea Corn 110,000 Jul/Aug Corn 110,000 Aug/Sep China Soy-beans 110,000 01/02 crop sea.

Totals: Wheat 70,800 tonnes, Corn 220,000 tonnes, Soybeans 110,000 tonnes.

THESE MAY NOT BE THE ONLY

EXPORT SALES THAT HAVE TRAN-SPIRED, BUT THEY ARE THE ONLY SALES THAT COULD BE CON-FIRMED BY USDA GRAIN MARKET NEWS.

DATE CHANGE YEAR AGO TRUCK BIDS: 05/30/01 05/29/01 05/31/00 Wheat: Kansas City (HRW ORD) 2.95-3.00 up 1 2.79 Minneapolis (DNS 14pct) 3.58 up 3/4 3.44 1/2 Portland (SWW) 3.22-3.34 dn 3-up 4 2.94-2.98 St. Louis (SRW) 2.39 unch-dn 1 2.51-2.52

Corn, US 2 Yellow: Kansas City 1.75-1.78 up 1 2.11-2.12 Minneapolis 1.64 up 3/4 1.98 So. Iowa 1.75-1.78 1/2 up 4-2 1/2 2.06-2.08 Omaha 1.65-1.67 up 1-2 1.98-1.99 Soybeans, US 1 Yellow: Kansas City 4.47 dn 1 5.14-5.15 Minneapolis 4.23 1/2 dn 1 3/4 4.97 1/2 So. Iowa 4.33-4.38 dn 3-2 5.08-5.11 Cent. II Processor 4.48 1/2-4.57 1/2 dn 1 3/4-up 1/4 5.09 1/2-5.15 1/2 Minneapolis truck wheat - to arrive 20 days

FUTURES: Kansas City (May) Wheat 3.20 1/4 up 1 3.04 1/4 Minneapolis (May) Wheat 3.28 up 3/4 3.27 1/2 Chicago (May) Wheat 2.64 dn 3/4 2.74 3/4 Chicago (May) Corn 1.90 up 3/4 2.25 Chicago (May) Soybeans 4.37 1/2 dn 1 3/4 5.17 1/2

EXPORT BIDS: Barge or rail, Port of New Orleans or North Texas Gulf.

Bids per bushel except sorghum per cwt.

US 1 HRW Wheat, Ord Protein: 3.60 1/4-3.63 1/4 up 1-dn 1 3.11 1/4-3.18 1/4 US 2 Soft Red Winter Wheat: 2.76 -2.77 dn 3/4

2.73 3/4 US 2 Yellow Corn: 2.07 1/2-2.08 up 3 3/4-3 3/4 2.31 US 2 Yellow Sorghum: Rail 4.14-4.37 up 1-4 3.93-3.95 Barge 4.21-4.38 up 1-unch 4.09-4.12 US 1 Yellow Soybeans: 4.69 1/2-4.70 1/2 dn 1 3/4-2 3/4 5.37 1/2-5.38 1/2

Kirkwood Hay

Kirkwood, Pa.

Report Supplied By Auction
Tuesday, May 29, 2001

37 LOTS.
MIXED HAY: 1ST CUTTING 25.00-130.00, 2ND CUTTING 45.00-165.00
TIMOTHY: 50.00-92.00.
ALFALFA: 1ST CUTTING 10.00-181.00, 2ND 20.00-170.00, 3RD 45.00-110.00, 4TH 55.00-120.00.
CLOVER: 130.00.
GRASS: 50.00-130.00.
WHEAT STRAW: 85.00-155.00.
BARLEY STRAW: 135.00-150.00.
SALE DAY TUES. 10 A.M.

Westminster Hay

Westminster, Maryland

Report Supplied By Auction
May 30, 2001

Hay—Straw—Grain
83 LOTS.
ALFALFA: 1.50-2.50 BALE.
TIMOTHY: .80-3.30 BALE.
MIXED HAY: .60-2.70 BALE.
GRASS: .40-1.40 BALE, 15.00
LARGE ROUND.
STRAW: 1.50-2.60 BALE.
MULCH: .10-.25 BALE.
GROUND EAR CORN: 2.75-4.25
BAG.
FIREWOOD: 15.00 CORD.

Middleburg Hay

Middleburg, Pa.

Report Supplied by Auction
Tuesday, May 29, 2001

HAY: 26 LOTS. TOTAL 47.
ALFALFA: 7 LOTS, 45.00-235.00.
MIXED HAY; 10 LOTS, 30.00-275.0.
TIMOTHY: 4 LOTS, 95.00-140.00.
CLOVER: 85.00.
ROUND BALES: 18.00.
ORCHARDGRASS: 3 LOTS, 95.00-120.00.
STRAW: 5 LOTS, 107.50-160.00.
EAR CORN: 13 LOTS, 67.50-80.00
OATS: 3 LOTS, 2.10-2.50

Shippensburg Hay Auction

Shippensburg, Pa.

Report Supplied By Auction

May 26 and 29, 2001

Hay—Straw—Grain
29 LOADS.
ALFALFA: 68.00-102.50.
MIXED HAY: 50.00-125.00.
TIMOTHY: 34.00-125.00.
BROMEGRASS: 92.50.
ORCHARDGRASS: 42.00-72.50.
STRAW: 56.00-127.50.
EAR CORN: 88.00.

Lebanon Produce Hay Auction

Reistville, Pa.

Report Supplied By Auction

Tuesday, May 29, 2001

Hay—Straw—Grain
ORCHARDGRASS AND TIMO-
THY. 52.00.
MIXED HAY; 52.00.
GRASS HAY: 62.00.
HAY SALE EVERY TUES., 10 A.M.

Morrison's Cove Livestock Hay

Martinsburg, Pa.

Report Supplied By Auction

Monday, May 28, 2001

Hay—Straw—Grain
ALFALFA: 65.00-97.50.
TIMOTHY: 77.50-92.50
MIXED HAY: 65.00-92.50.
ROUND BALES: 10.00-15.00 EACH.
STRAW: 92.50.
ALFALFA: ONE LOAD AT 177.50.
AUCTION EVERY MON., 12:30 P.M.

Weaverland Hay

New Holland, Pa

Report Supplied by Auction

Thursday, May 31, 2001

Hay—Straw—Grain
TOTAL LOADS: 18.
TIMOTHY HAY: 125.00.
MIXED HAY: 67.00-165.00
GRASS: 72.00-175.00.
STRAW: 85.00-140.00.
EAR CORN: 74.00.
OATS: 2.20 BU.

Grantsville Livestock

Grantsville, Maryland

Report Supplied by Auction

Saturday, May 26, 2001

STOCK STEERS AND BULLS 200-500 LBS. 62.00-110.00.
STOCK HEIFERS 45.00-100.00.
SLAUGHTER STEERS GOOD TO CHOICE UP TO 77.50, MEDIUM TO GOOD 45.00-67.00
HOLSTEIN STEERS GOOD 42.00-61.00, LIGHT 57.00-62.00.
SLAUGHTER HEIFERS GOOD TO CHOICE 50.00-74.00, MEDIUM TO GOOD 45.00-55.50.
BULLS HEAVY 45.00-63.00, LIGHT 35.00-64.50.
COWS UTILITY HOLSTEINS 42.00-50.00, CANNERS 35.00-44.00, CULLS 35.00 AND DOWN.
BOB CALVES 50.00 AND DOWN
HOLSTEIN BULL CALVES RETURN TO FARM 90-120 LBS UP TO 160.00
HOLSTEIN HEIFER CALVES RETURN TO FARM UP TO 225.00
BEEF CROSS CALVES RETURN TO FARM UP TO 206.00.
HOGS TOP QUALITY UP TO 47.00, HEAVY UP TO 45.00, LIGHT 34.00-70.00, FEEDER PIGS BY HEAD UP TO 64.00.
SOWS 20.00-41.00
MALE HOGS 8.00-30.00.
LAMBS 70-85 LBS. UP TO 85.00, 85-125 LBS. UP TO 80.00, 30-60 LBS. UP TO 100.00, CULLS UP TO 60.00.
SHEEP UP TO 40.00.
GOATS LARGE 60.00-100.00, MEDIUM 25.00-65.00, SMALL 10.00-30.00, ALL BY THE HEAD.
FEEDER SALE 2ND SAT. EVERY MONTH.

Fauquier Livestock Exchange, Inc.

Marshall, Virginia

(540) 364-1566

Under New Management

Farmer Owned & Farmer Operated

Graded Feeder Cattle Sales

2nd week of every month.

4th week of every month

Monday . . June 11 . . 7:30 P.M. . . Calf & Yearling

Monday . . July 9 . . 7:30 P.M. . . Calf & Yearling

REGULAR SALES EVERY
TUESDAY 1:30 PM

"Specializing in Top Quality Angus Cattle"

ORDER BUYING AVAILABLE

Metal Roofing & Siding

Since 1948



A. B. Martin Roofing Supply

150 Slate Road, Ephrata, PA 17522

Why Pay More - For Less

BUY DIRECT • WE MANUFACTURE

Roofing & Siding in the following
Aluminum • Galvanized • Galvalume
18+ Color Painted, #1 & #2 Material
Low Prices - Fast Delivery
Free Literature. 1-800-373-3703

717-445-6885

Thanks to all farmers who have installed Ulti-Mat!

ULTI-MAT™
The Ultimate in Cow Comfort



- 1 Comfortable cows produce more milk
- 2 Ulti-Mat all rubber cow mattresses provide excellent, confident footing
- 3 Cows stand in line to get on Ulti-Mat mattresses
- 4 Mattresses stay level
- 5 Comfort doesn't change after 3 years in barn
- 6 Rubber doesn't displace under cover.
- 7 All rubber Ulti-Mat mattress recovers to its original shape every time cows change foot position
- 8 No ripple effect of top cover
- 9 Ulti-Mat mattresses do not become thinner and harder over time
- 10 Ulti-Mat mattresses use only a specific cut of rubber that always keeps its memory
- 11 Ulti-Mat mattresses are totally protected by a patent-pending installation method, and the mattress cover
- 12 Warranty on Ulti-Mat mattresses is the same as whatever the cover is warranted for
- 13 Up to 5 year warranty with vinyl cover - patent pending on mattress installation method

THE ONLY All Rubber Mattress that recovers to original shape after cow movement

FACTS and FEATURES about Cow Comfort & the Ulti-Mat™ I.

- An all-rubber mattress that is rebuildable (no sewing to come apart, no material to tear).
- Choice of mattress covers.
- 3" nominal thickness
- Water & acid resistant polyurethane binder
- Uses PA reclaimed tire rubber.
- The most comfort for cows of any type of installation.
- Designed by farmers
- Mattress inert does not promote fungus or bacterial growth

New Farmer-Friendly installation allows changing cover or rebuilding mattress in minutes!

We are now manufacturing:

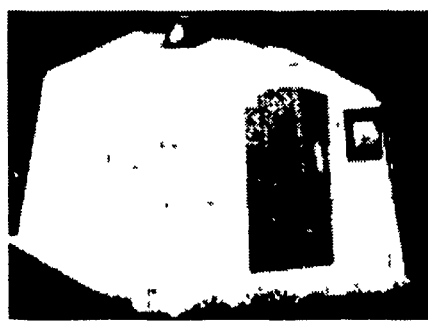
COW WALKWAY MATS

for Feed Bunks • Holding Areas • Milking Parlors • Cow Walkways

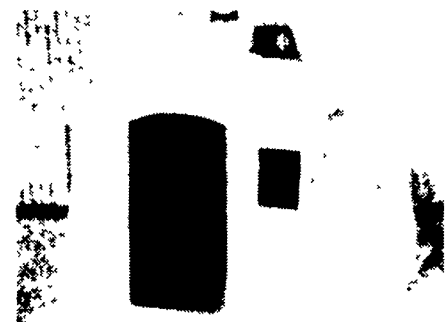
Where cow walkway mats are installed on only 1/2 of the walkway, cows travel only on the one side where mats are on top of concrete.

Milking parlor mats for milkers relieves stress on feet and legs for workers.

POLYDOME TRUCKLOAD SALE



Poly Square Big Foot Calf Nursery 5-1/2' x 8'



Regular Poly Square Calf Nursery 5-1/2' x 7'

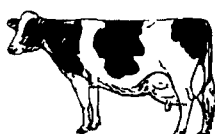
Buy 10 or More and receive...

\$27 off list

\$33 off list

During June Dairy Month!

Contact
• Cow Comfort Systems
• Poly Dome East
• Zartman Farms
Manufactured Exclusively for ZARTMAN FARMS
CALL FOR REFERENCES Installation & Financing Available



ZARTMAN FARMS

820 Hilltop Road, Ephrata, PA 17522

717-733-1050

E-mail - zartmanfarms@dejazzd.com