

Northeast Broiler Fryer Parts Part I

ATLANTA, GA. May 30, 2001

Report Supplied By USDA

Trucklot buying interest was generally fair and about as expected for mid-week trading. Supplies of boneless skinless breast were available. Bone-in breast were at least adequate to fully adequate. Leg quarters were clearing satisfactorily. Wings were fully adequate. Movement into retail and distributive channels was fair to moderate, and was best for retail feature activity. The market tone was about steady to barely steady for breast items, steady on the balance.

ICE PACKED BROILER/FRYER PARTS, DELIVERED TO FIRST RECEIVERS IN POOL TRUCKLOT AND TRUCKLOT QUANTITIES, CENTS PER POUND CURRENT NEGOTIATED TRADING BREAST - B/S 145 TENDERLOINS 135-140 BREAST - WITH RIBS 74-75 BREAST - LINE RUN 74 LEGS 41-42 LEG QUARTERS (BULK) 29-30 DRUMSTICKS 36-37 THIGHS 36-37 B/S THIGHS 88-89 WINGS (WHOLE) 96-97 BACKS AND NECKS (STRIPPED) 10-12 LIVERS (5 POUND

TUBS) 30-35 GIZZARDS (HEARTS) 40-45

INCLUDES NEW YORK CITY METROPOLITAN AREA, NORTHERN NEW JERSEY, MASSACHUSETTS, CONNECTICUT, RHODE ISLAND, AND PENNSYLVANIA (NORTHEAST OF HARRISBURG).

Northeast Broiler Fryer Parts Part II

ATLANTA, GA. May 30, 2001

Report Supplied By USDA

ICE PACKED BROILER/FRYER PARTS, DELIVERED TO FIRST RECEIVERS IN POOL TRUCKLOT AND TRUCKLOT QUANTITIES, CENTS PER POUND CURRENT NEGOTIATED WTD VOLUME ITEM TRADING AVG /LBS BREAST - B/S 145 147 90 610,200 TENDERLOINS 135-140 145.01 162,505 BREAST - WITH RIBS 74-75 83.88 315,602 BREAST - I LINE RUN 74 76.00 135,000 LEGS 41-42 46.16 254,280 LEG QUARTERS (BULK) 29-30 30.26 813,401 DRUMSTICKS 36-37 44.71 165,630 THIGHS 36-37 42.36 120,530 B/S THIGHS 88-89 92.32 64,670 WINGS (WHOLE) 96-97 103.58 436,840 BACKS AND NECKS (STRIPPED) 10-12 12.04

90,520 LIVERS (5 POUND TUBS) 30-35 39.22 77,340 GIZZARDS (HEARTS) 40-45 44.79 121,850

INCLUDES NEW YORK CITY METROPOLITAN AREA, NORTHERN NEW JERSEY, MASSACHUSETTS, CONNECTICUT, RHODE ISLAND, AND PENNSYLVANIA (NORTHEAST OF HARRISBURG).

Delmarva Broiler/Fryer

ATLANTA, GA. May 30, 2001

Report Supplied By USDA

Movement of ready-to-cook whole birds was about moderate and was generally noted as best on the under 3 pound sizes. Heavier weights were fully sufficient in handling current inquiry. Live supplies were at least moderate, weights were mostly desirable to heavy Processing schedules were moderate to moderately heavy. Less than trucklot asking prices were unchanged at 55 to 69 cents. Trade sentiment was mostly steady. Tray packed parts were noted as more readily available than ice pack Inquiry was both light to fair and cautious Leg quarters continued to clear well Other cuts were at least adequate.

ESTIMATED SLAUGHTER OF BROILER/FRYERS IN DELMARVA

Some markets not available because of the holiday

(000) ESTIMATED ACTUAL AVG WEIGHT ACTUAL AVG. WEIGHT 05/30 05/28 05/28 05/23 05/21

2,346 (A) (A) 2,347 5.15

(A) Not released to avoid disclosing individual operations

BROILER/FRYER CURRENT NEGOTIATED PRICES FOR IMMEDIATE DELIVERY INCLUDES MOSTLY MULTIPLE-DROP SHIPMENTS OF BRANDED AND WING TAGGED TO NEW YORK CITY FROM DELMARVA BRANDED U S GRADE A RANGE 51-74 WEIGHTED AVERAGE 58.38 NO OF BOXES 12,077

7 of 8 plants reporting.

SALES TO VOLUME BUYERS, USDA GRADE A AND GRADE A, BROWN EGGS IN CARTONS, DELIVERED STORE DOOR, CENTS PER DOZEN RANGE EXTRA LARGE 1.00-1.02, LARGL 87-89, MEDIUM 70-72

NEW ENGLAND PRICES PAID 10 PRODUCERS, CASES EXCHANGED, GRADE YIELD BASIS, BROWN EGGS LOOSE, AT FARM, CENTS PER DOZEN RANGE JUMBO 1 12-1 15, EXTRA LARGE 78-.81, LARGE .65-.68, MEDIUM .47-.50, SMALL 17-.20

National Canner Fowl Market

Atlanta, Ga. May 25, 2001

Report Supplied By USDA

NATIONAL CANNER FOWL MARKET Prices were irregular but generally ranged unchanged to slightly lower when compared to a week earlier Offerings were adequate to fully adequate Demand was light to moderate The undertone was cautious and usually no better than steady

Cents per pound, current negotiations with out freight cost LIGHT CANNER HENS Line run without necks 24-26 majority 24-25 HEAVY CANNER HENS Without necks 32-38, majority 32-37

Cents per pound, current negotiations freight cost included LIGHT CANNER HENS Line run without necks 24-28 5 majority 24 25-25 HEAVY CANNER HENS Without necks 32-40, majority 33-38

New York Eggs

ATLANTA, GA. May 30, 2001

Report Supplied By USDA

Prices were 3 cents lower on the larger sizes and 4 cents lower on mediums. The market tone was weak. Demand ranged light to moderate. Supplies of all sizes were adequate to available for trade needs. The New York State shell egg inventory was 7% less, but the New Jersey inventory was 5% more than the previous week.

PRICES TO RETAILERS, SALES TO VOLUME BUYERS, USDA GRADE A AND GRADE A, WHITE EGGS IN CARTONS, DELIVERED STORE DOOR, CENTS PER DOZEN. RANGE EXTRA LARGE .62-.64, LARGE .59-.62, MEDIUM .44-.47

North Atlantic Eggs

Atlanta, Georgia

Report Supplied by USDA

May 30, 2001

In Philadelphia, prices were unchanged to 3 cents lower on the heavier weight eggs and unchanged to 4 cents lower on medium In New England, prices were 3 cents lower on extra large and large, 4 cents lower on medium, 1 cent lower on small, and unchanged on jumbo In Boston, prices were unchanged The market tone was weak Demand was light to moderate Supplies were adequate to available The New England shell egg inventory was 5% less than last Monday. The Pennsylvania inventory was 2% less and the Delaware/Maryland inventory was 1% less than the previous week. Breaking stock supplies were sufficient and demand was light to moderate. Light type hens were ample to burdensome for processing requirements

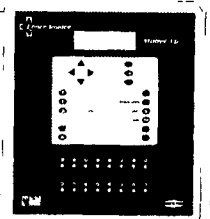
PHILADELPHIA: PRICES TO RETAILERS, SALES TO VOLUME BUYERS, USDA GRADE A AND GRADE A, WHITE EGGS IN CARTONS, DELIVERED STORE DOOR, CENTS PER DOZEN. RANGE: EXTRA LARGE .60-.65, LARGE .58-.63, MEDIUM .43-.48

BOSTON: PRICES TO RETAILERS,



Join the list of successful growers who have improved their performance with Chore-Tronics controls. Ventilation computers keep your birds in the comfort zone 24-7. Up to forty outputs. Networkable for remote monitoring and operation.

CALL FOR PRICING



Not all products may be available at both locations. We will however be happy to ship to your location or to our store on our next re-stocking shipment. Standard shipping charges apply.

SPRING SPECIALS

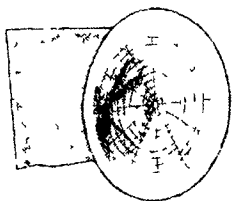
- BOOSTER PUMPS in box
 - 1/3hp \$222.00
 - 1/2hp \$286.00
 - 3/4hp \$295.00
 - 1hp \$331.00
- STOCK FANS on sale
 - 36" DD with hardware \$185.00
 - in qty's of 10 or more \$180.00
 - CT 48 EZ BD Fan \$405.00
 - 48 & 52 Fans CALL
- PLASTIC FOGGING NOZZLES
 - 1 gal nozzles \$ 77
 - 1 gal nozzles 100 or more \$ 70
 - 1 1/2 gal nozzles \$ 17
- COOL CELL Pads & Systems
 - 2 x2 x4 Paper Pad \$17.70
 - 2 x2 x5 Paper Pad \$15.10
 - 2 x2 x6 Paper Pad \$27.70
 - HCC HAIR CALL
 - CT's Recirculating CALL
- CHEMILIZER Medicators
 - HN55 \$209.00
- COMPLETE Tunnel Retrofits CALL

TURBO® FANS

Never need replacement Chore-Time's Turbo fans are rugged and efficient with fiberglass housing, cast aluminum blade and one piece plastic cone. High CFM and high CFM/watt.

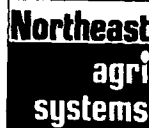
CHORE-TIME TURBO 48 Belt Drive fan w. cone CALL

New black/white fan for dark out houses available June 2001



Call for more fan specials!

Authorized **CHORE-TIME** Master Distributor Since 1982



Northeast Agri Systems, Inc

Flyway Business Park
139A West Airport Road
Litzitz, PA 17543
Ph (717) 569-2702

Delmarva Store
305 University Ave
Federalsburg MD
(Formerly Long Lumber)
1-800-735-6361

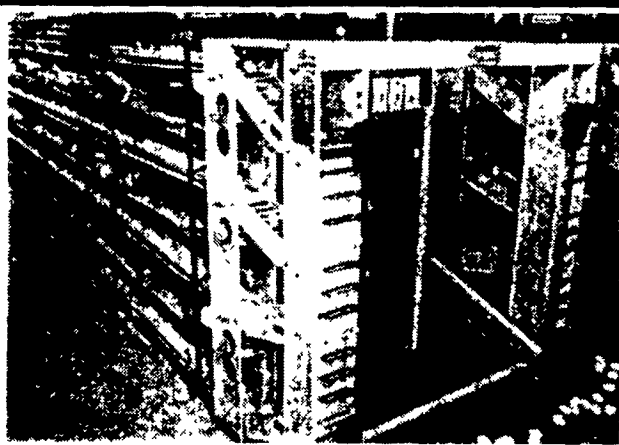


1-800-673-2580

Multi-Deck

Layer Cage System

- Automated system for feeding, watering, egg collection & manure removal
- Provides stress free environment
- Solid partition walls
- Plastic coated removable floor
- Produces more eggs per hens housed
- Lower feed conversion and mortality rate
- Increases profits



COMPOSTCAT™

HIGH-RISE LAYER HOUSE COMPOST SYSTEM

The composting process eliminates methane gas and hydrogen sulfide odors while converting manure in a pathogen-free, weed seed-free organic product that will never revert to raw manure

The end product is a stable organic material which has retained most of its nutrients and is no longer a breeding source for flies, beetles or other insects



Farmer Automatic
OF AMERICA INC
1-800-683-2634

Sheldon Goodine
Regional Manager



Z Eiset
Equipment



2187 North Penryn Rd., Manheim, PA 17545

Phone (717) 665-4056 Fax (717) 665-2240

WHAT'S AHEAD FOR CORN, OATS, SOYBEAN AND WHEAT FUTURES AND OPTIONS

Lehigh Valley Futures, Inc. through its clearing FCM, offers access to all major exchanges' Futures and Options.

Serving the Farm Community for more than 30 years.

When buying options, your risk is in some cases limited to the premiums paid plus transaction costs...

FOR INFORMATION, CONTRACT DETAILS AND FUTURES AND OPTIONS STRATEGIES.

PHONE (610)366-7979 or 800-543-8939

LEHIGH VALLEY FUTURES INC.

Commerce Plaza, Suite 249,
5000 Tilghman Street,
Allentown, PA. 18104
e-Mail: info@lvfutures.com
web site: www.lvfutures.com

The risk of loss in trading futures and options can be substantial. Futures and options trading may not be suitable for everyone. You should carefully consider the risks in light of your financial condition in deciding whether to trade.