

Shippensburg Produce Auction

Shippensburg, Pa.
Report Supplied by Auction
May 25 and 29, 2001
APPLES: 3.00-4.50 1/2 BU.
ASPARAGUS: 2.40-2.60 LB.
CABBAGE: 2.00-3.50 50 LBS.
ONIONS: SPRING .45-1.10 BUNCH,
12.00 50 LBS.
POTATOES: 8.00-11.50 50 LBS.
RHUBARB .90 BUNCH.
SPINACH: 3.00-6.00.
STRAWBERRIES: 17.00-27.00 8-QT.
TOMATOES GREENHOUSE 7.00-
10.00 10 LBS.
FLOWERS: ANNUAL FLATS 2.00-
18.00, HANGING BASKETS 2.00-8.50,
PLANTERS 5.00-8.00; GAL. PEREN-
NIALS .75-3.00 EA.
NURSERY STOCK: SHRUBS 2.50-
7.50, TREES 10.00-16.00.
SALE DAYS TUES., THURS., AND
FRI, 9 A.M.

Lebanon Produce Auction

Reistville, Pa.
Report Supplied by Auction
May 28, 2001
ASPARAGUS: 1.70-2.40 BUNCH.
MEADOW TEA: .25-.75.
LETTUCE: .25-.80 BAG.
ONIONS: SPRING .25-.50.
POTATOES: WHITE 1.00-1.30 20
LB. BAG
RHUBARB: .25-2.00.
SPINACH: 1.10-3.50
PEAS: SUGAR 1.35-2.70 QT, 26.50
10 LBS
STRAWBERRIES: 27.00-30.00
FLAT, 3.00-4.00 QT.
TOMATOES: MED. 1.10 QT.
FLOWERS: BEDDINGS ANNUALS
.35-9.50 FLAT, OTHERS 25-2.25 POT;
HANGING BASKETS 1.25-8.00,
BULBS .35.
HERBS: 25-1.00.
VEGETABLE PLANTS: CHINESE
CABBAGE .45 PACK.
NEXT WEEK'S SALE DAYS TUES.,
THURS., AND FRI.

Weaverland Produce Auction

New Holland, Pa.
Report Supplied by Auction
May 31, 2001
ASPARAGUS: 1.75-2.10 LB.
LETTUCE: LEAF .65-.85.
ONIONS: .35-.75 BUNCH.
PEAS SUGAR 15.00-25.00, HULL
11.00-25.00, BOTH 10 LBS.
RADISHES: .25-.65 BUNCH.
RED BEETS: .35-.75 BUNCH
RHUBARB: .65-1.25 BUNCH
SPINACH: 10.00-12.00 BU
STRAWBERRIES: 27.00-30.00 8 QT.
FLAT.
TOMATOES. RED SM. TO LRGE.
HOTHOUSE 25.00-52.00 25 LBS.
FLOWERS: AGERATUM 1.25-2.00,
VINCA 1.50-3.00, IMPATIENS 2.00-
3.50, PETUNIAS 2.75-4.00, ALL
FLATS; PERENNIAL POTS .35-1.65;
SUNFLOWERS 1.25-2.50 POT; HANG-
ING BASKETS 3.00-4.50.
NURSERY STOCK: BLUE
CYPRESS 3.50-7.00; BIRCH 5.00-20.00;
CHERRY 13.00.
SALE DAYS MON., TUES.,
THURS., FRI., 9 A.M. HAY AND
STRAW THURS. AT 10 A.M.

Phila. Onion, Potato

PHILADELPHIA Terminal
May 30, 2001
Report Supplied by USDA
ONIONS AND POTATOES -
ONIONS DRY: MARKET YELLOW
JBO HIGHER, OTHERS ABOUT
STEADY. US1 OR GENERALLY
GOOD QUAL AND COND UNLESS
OTHERWISE STATED. NEW CROP
Yellow Granex GA 40 lb ctns jbo fr cond
8.00 lge 10.00-11.00 Grano CA 50 lb sks
col 11.00 jbo 11.00-12.00 TX 50 lb sks jbo
12.00-14.00 White MX 50 lb sks jbo
12.00 TX 50 lb sks jbo 10.00-12.00 Red
Globe Type TX 25 lb sks jbo 11.00-12.00
-POTATOES: MARKET ABOUT
STEADY US1 SZ A WASHED OR
BRUSHED UNLESS OTHERWISE
STATED Russet Burbank ID 50 lb ctns

40s 11.00 50s 11.00 60s 11.00 70s 9.50-
11.00 mostly 10.00-10.50 80s 9.50-11.00
mostly 10.00-10.50 90s 9.50-11.00 mostly
10.00-10.50 100s 9.50-11.00 mostly
10.00-10.50 NEW CROP Round Red AL
50 lb sks sz B 11.00 AZ 50 lb ctns 15.00
FL 50 lb sks 10.00-12.00 sz B 12.00-13.00
mostly 12.00 Round White FL 50 lb sks
11.00-12.00 mostly 12.00 fr qual 8.00 sz
B 11.00-12.00

Kutztown Produce Auction

Kutztown, Pa.
Report Supplied by Auction
May 28, 2001
ONIONS: 30-.50 BUNCH.
RHUBARB: 40-.50 LB.
LETTUCE: HEAD 2.00-4.50 1/2 BU.
SPINACH: 4.00-6.00 1/2 BU.
BEDDING PLANTS 4.00-12.00
FLAT; PANSIES 3.00-4.00 FLAT;
HANGING BASKETS 2.50-10.50;
GERANIUMS SEED .50-1.50, 4" 1.75-
2.50, 6" 2.75-3.00, PATIO 4.00-8.00;
PERENNIAL POTS 1.75-9.50, PLUGS
20-1.00.
VEGETABLE PLANTS: 4.00-11.00.
NURSERY STOCK: SHRUBS
AZALEA .50-4.00, RHODODENDRON
3.00-9.00, JUNIPERS 2.50-10.00, AR-
BORVITAE 2.50-16.00; TREES 2.50-
45.00, RARE 50.00-165.00.
STARTING JUNE 5, SALE TIME
WILL BE 9 A.M. MON., TUES.,
THURS., FRI., SAT.

Middleburg Livestock Auction

Middleburg, Pa.
Tuesday, May 29, 2001
Report Supplied By USDA
CATTLE 320...(PDA)..Compared
with last week's sale...(Supply included
135 steers and heifers, 113 cows, 13 bulls
and 59 feeder cattle)..Compared with
last week's sale..steers steady to 1.00
higher, cows unevenly steady 1.00 lower
to 1.00 higher, heifers and bulls steady.
STEERS: High Choice and Prime 2-4
1255-1480 lbs 80.00-83.00, one 84.25,
Choice 2-3 1100-1435 lbs 77.00-81.75,
1535-1635 lbs 72.50-79.75, Select 1-3
69.50-76.00.
HOLSTEIN STEERS. couple High
Choice and Prime 2-3 1450 & 1475 lbs
72.00 & 73.00, Choice 2-3 1220-1655 lbs
65.00-69.00, Select 1-2 58.75-65.00, few
Standard 1-2 50.00-54.75.
HEIFERS: few High Choice and
Prime 2-4 1135-1405 lbs 81.00-83.00,
Choice 2-4 1050-1430 lbs 75.50-79.25,
Select 1-3 69.00-75.75, few Standard 1-2
63.00-67.00.
COWS: Breakers 75-80% lean 46.50-
52.75 with low dressing down to 44.50,
Boners 80-85% lean 42.00-50.75 mostly
44.50-49.50, Lean 85-90% lean 38.00-
47.75 mostly 40.50-46.25. Shells 37.50
and down.
BULLS: Yield Grade 1 1415-1810 lbs
56.00-58.75, Yield Grade 2 1100-1860 lbs
51.00-54.75.
FEEDER CATTLE: STEERS: few
Medium and Large 1 435-715 lbs 80.00-
96.00, couple Medium and Large 3 320
& 345 lbs 97.00, one 405 lbs 66.00; HEIF-
ERS Medium and Large 1 525-645 lbs

66.00-76.00. Medium and Large 2 500-
735 lbs 59.50-65.00, one Medium and
Large 3 360 lbs 85.50; BULLS: one
Medium 1 505 lbs 83.00, Medium and
Large 3 255-275 lbs 75.00-85.00, 645-690
lbs 52.50-55.00.
CALVES 237...VEALERS: few Stan-
dard and Good 70-105 lbs 42.50-65.00,
Utility 70-115 lbs 10.00-20.00.
FARM CALVES: Holstein bulls 5.00
to 10.00 lower, Holstein heifers
steady..No 1 Holstein bulls 90-120 lbs
160.00-195.00 mostly 170.00-190.00, 80-
85 lbs 150.00-170.00, No 2 75-125 lbs
100.00-167.00 with weaker calves down
to 80.00, No 1 Holstein heifers 80-120 lbs
380.00-530.00, No 2 65-115 lbs 220.00-
360.00.
Few beef type bulls and heifers 90-195
lbs 112.00-185.00.
HOGS 167...Barrows and gilts 1.00 to
2.00 lower, sows 1.00 lower. BARROWS
AND GILTS: 49-54% lean 235-270 lbs
45.50-46.50, 45-50% lean 245-285 lbs
43.50-45.85, 40-45% lean 285-295 lbs
41.00-44.00.
SOWS: 1-3 315-465 lbs 33.75-36.25,
520-695 lbs 36.00-38.50, few Medium
300-395 lbs 26.00.
BOARS: 345-515 lbs 11.00-21.50.
FEEDER PIGS 20...1-3 35-50 lbs
25.00-41.00, 60-80 lbs 56.00-60.00. —
per head.
SHEEP 8...Slaughter lambs 20.00
higher. SLAUGHTER LAMBS: Choice
45-55 lbs 108.00-130.00.
GOATS 30...(All sold by the head).
One Large Billy and Wether 70.00, one
Medium Billy 51.00, couple Large Nan-
nies 71.00 & 75.00, couple Medium 44.00
& 51.00, Large Kids 19.00-42.00, Small
15.00-17.00.

Why Be Sick And Tired?

America has more sick people than most countries, because they eat too much cooked food which lost all the enzymes and up to 80% of the nutrition. Most food you buy contains harmful toxins because weed killers, insecticides and many other chemicals were used to grow it, and in processing to increase shelf life. But there is a solution to the problem.

Why Not Be Healthy And Energetic?

Many doctors and people are now using a new and better way to remove toxins and poisons from the body, clean out the arteries and build up a good strong immune system with good nutrition. This is like ammunition for the immune system so it can fight off diseases with amazing results. The research and technology to produce these excellent products from "all natural and organically grown fruit, grain and vegetables" was supervised by doctors. The cost is considerably less than drugs, chelation, chemotherapy, radiation and operations. It does NOT interfere with medication. There are also viruses now that can not be stopped with antibiotics, but these all natural products are producing excellent results with supervision from doctors.

Doctors Are Switching

Ask for free information on why over 3000 doctors have already switched from drugs to alternative medicine in helping people recover from cancer, heart attacks, arthritis diabetes, lupus, fibromyalgia, allergies, fatigue and many other health problems without any side effects. We make no health claims. We work with doctors in giving the body what it needs, so it can heal itself. There is also a Prevention program to help you from getting sick. "An ounce of prevention costs far less, and is so much better than a pound of cure." Which would you prefer, \$149 a year to help prevent a heart attack, or a \$50,000 by pass operation? The choice is yours. Let us try to help you.

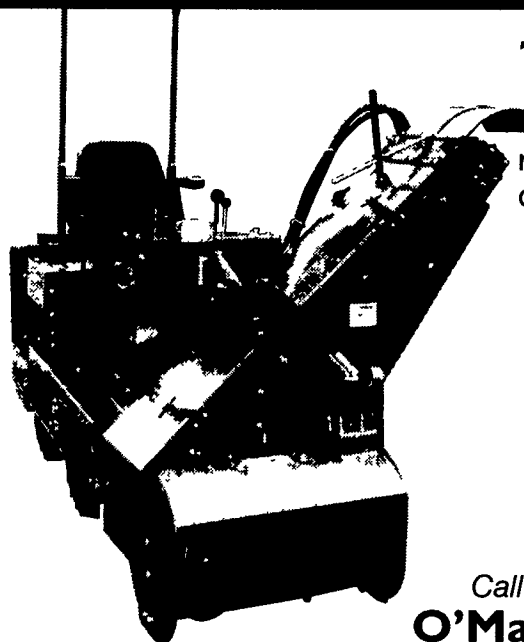
For more information contact:

UNI Health Products, Inc.

520 Prescott Rd., Lebanon, Pa. 17042
Phone 717-866-4555, E-mail UNI@nbn.net
Fax 717-866-4928, Voice mail 800-668-7373

Inquire for distributor opportunities

Fly Control For Egg Producers!



THE SHOVELER™

Break the fly life cycle with this revolutionary machine by transferring dry matter onto wet manure.

- Hydraulic 4-wheel drive.
- Easy to operate controls.
- Rapid payback!
- Dramatically reduces chemical use!

"I've never had better fly control. THE SHOVELER™ has paid for itself in less than 10 months."
- Spike Nickels, Green Valley Poultry Farm, Abingdon, VA

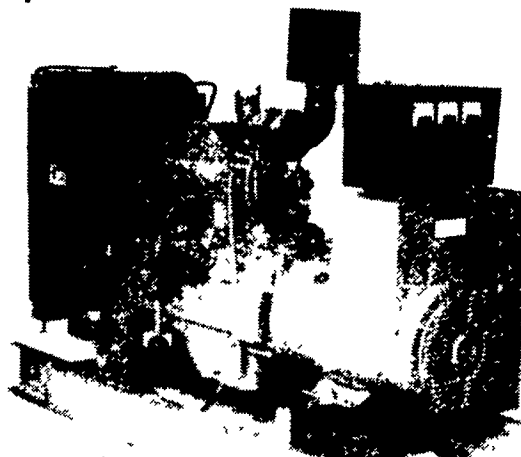
Call Today!

O'Mark, Inc.

Lancaster, Pa • 717/951-6000 • www.the-shoveler.com

Agricultural Generators

Spectrum Detroit Diesel



Automatic
L.P. Gas, Diesel,
Natural Gas Generators
5 to 2,000 KW



P.T.O.
Generators
25 to 135 KW Units
In Stock!

Service - Rental - New & Used Units In Stock

PENN POWER SYSTEMS

Power Generation Systems Specialists

330 Fonderwhite Road, Lebanon, PA 17042

Call Leonard Martin

717-273-4544

Fax 717-273-5186