

**SHIFTING PROBLEMS?**

Are you having shifting difficulties with your IH 706, 806, 856, 1256, 1066, 1466, 1086, 1486 & other similar models?

Call us for the industry's only guaranteed shifting fixes

We also have other tractor parts at competitive prices

**Wenz Service, Inc.**  
800/808-7885

**Farmer's Repair Service**

877-811-4449

**For Sale (7) Power Units**

100 HP, IH 414 Diesel With Clutch & Belt Pulley \$3,500

(2) JD 239 T Diesel, 80 HP With Rockford Clutches, New Overhaul - With Warranty, Rebuilt Clutches \$5,500 Each

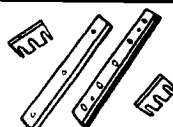
JD 239 Diesel 60 HP, With Rockford Clutch, New Overhaul, With Warranty, Rebuilt Clutch \$4,500

JD 329 Diesel, 75 HP \$2,500

JD 362 Gas 85 HP \$1,295

Continental 6 Cyl. LP Gas \$1,350

**FORAGE KNIVES**



Call Weaver Where Quality Is Not A Question!

Weaver Distributing  
1-800-Weaver-D  
Fredericksburg, PA

**Larry L. Adair**

55 Gal. Drum Delivered Free 50 Mi. Radius From York, PA (No drum deposits)



(800) 755-OILS  
(800) 755-6457  
(717) 246-9741  
Call Early Morning Or Late Evenings

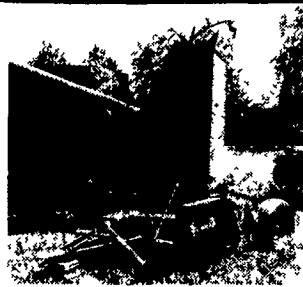
**Price Per 55 Gal. Drum**  
15W40 Motor Oil ... \$209.50  
Tractor Hydraulic \$204.55  
Hydraulic Oil ... \$166.60  
NO SUNDAY CALLS

**BEST BUYS IN USED EQUIPMENT**



C20521  
**Case IH 8630 Bale Wrapper,**  
Trailer, Will Wrap Square or Round Bales, Hydraulic Lift, Electrical Controls

**Call**



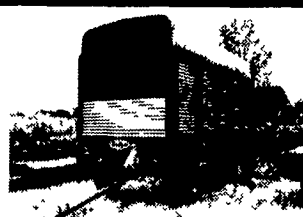
C24095  
**Brady 772 Chopper**  
540 PTO, No Jack

**\$595**



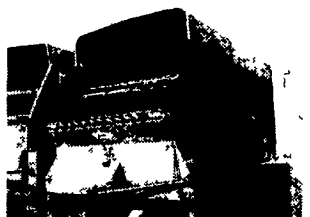
C19845  
**Case IH 1680 Combine**  
Specialty Rotor, Auto Header, Auto Feeder, Cutoff, Reel Control Fore & Aft, Scan Monitor, 30 5x32, 14 9x24 Tires, Adj Rear Axle, Side Hill Divider, Deluxe Air Seat, Reel Speed Control, Stone Retard Drum

**\$65,000**



C23312  
**Badger Forage Box**  
Includes Gear

**Call**



C23062  
**Badger BN950 Forage Box**  
Roof, 3 Beaters, Badger 1612 12 Ton Tandem Gear

**\$4,900**



C20798  
**Case IH 8455 Round Baler**  
Bale Shape Monitor, 5x5.5 Bales

**\$11,500**



C23759  
**Gehl 1475 Round Baler**  
High Moisture, Net Wrap, Gathering Wheels, 13.5x13 Flotation Tires

**\$10,500**



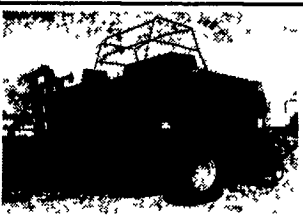
C24092  
**New Holland 851 Round Baler**  
Auto Tie, Wide Pickup, 5x5 5 Bale

**\$2,500**



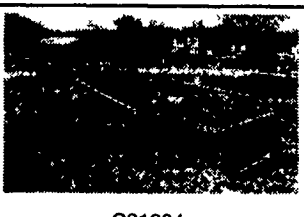
C22290  
**Case 1840 Skid Steer Loader** 10.00x16.5 Tires, Lights, Counter Wt., Aux. Valve, 73" Bucket

**\$12,200**



K21259  
**Case IH 8580 Square Baler**  
A Good, Clean Baler... Ready For You!

**\$39,000**



C21294  
**AGCO New Idea 4264 Tedder**  
Rake Tedder Combo, 3 Pt Hitch, 540 PTO, Working Width, 17 ft

**\$3,900**



C23552  
**Case IH 5130 Tractor**  
MFD, ROPS, With Canopy, 2 Valves, Bar Axle, Powershift Trans., 18 4x38 Rear Tires, 14.9x24 Front Tires

**\$25,900**



C23196  
**Case IH 7120 Tractor**  
MFD, 2 Valves, Cab & Air, 540/1000 PTO, 18 4R42 Rear Tires, 16 9R28 Front Tires, 3 Point Hitch

**\$52,000**



X20574  
**Case IH 8920 Tractor**  
MFD, 3 Remote Valves, Cab & Air, 20.8R42 Tires, 16 9R30 Front Tires, 540/1000 PTO

**\$65,000**



C21960  
**Case IH 8315 Windrower**  
15 ft Swing Tongue, Disc Mower, Steel Rolls, Swivel Hitch

**\$14,500**



C21606  
**Case IH 8830 Windrower**  
Cab, Air Conditioning

**\$14,900**



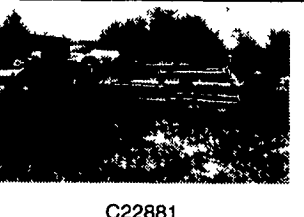
C22195  
**Case IH 8830 Windrower**  
Self Propelled, Disc Mower

**\$4,400**



C21936  
**John Deere 1470 Windrower**  
Side Pull, Rubber Rolls, Disk Mower

**\$9,500**



C22881  
**New Holland 499 Windrower**  
12 Ft., 540 PTO, Rolls, 3 Years Old

**\$2,950**



C22013  
**NI 5212 Windrower**  
Disc Mower, Side Pull, Ticoor Rolls

**\$11,500**

**Chambersburg Farm Service**  
975 South Main Street, Chambersburg, PA 17201  
717-264-3533 or 800-447-6830  
FAX: 717-264-0728  
E-mail: cfsinc@innernet.net  
view equipment at www.ironsearch.com



At CFS, we're committed to service, even after the sale!

**Carlisle Farm Service**  
260 York Road, Carlisle, PA 17013  
717-243-4419 or 800-447-6829  
FAX: 717-243-2988  
Email: cfscarl@innernet.net

**QUALITY USED EQUIPMENT**

- Kubota KX41-2 Mini Excavator, 700 Hrs \$12,400
  - JD 870, 28 Hp, 4WD Turf Tires 800 Hrs w/Loader \$12,700
  - Ford 1715, 27 Hp, 4WD Loader & Backhoe \$14,000
  - JD 75 Loader for 850 to 1050 \$1,750
  - NH L785 w/Perkins Dsl Engine 2400 Hrs \$8,900
  - NH L555 Deluxe Diesel Skid Loader 2400 Hrs w/Boom Hyd \$8,900
  - Kubota B7100 4WD Hydro w/60 Mid Mount Mower \$5,900
  - JD 750 Dsl. Tractor, 2WD, Very Good Condition \$5,400
  - JD 1520, Gas, HiLo, Ind PTO, w/JD 48 Loader \$8,900
  - Kubota B1750, 4WD, Hydro w/Loader \$10,900
  - 73 Ford 4000, gas, PS, 8x2 Trans, 3pt, Ind PTO, 14 9x28 \$6,900
  - NH 5635, Cab, 4WD, 490 Hrs, Like New \$29,500
  - 7-1/2 Yd. Pull Pan, 1 Yr Old \$14,000
- 215/536-3321 888/393-3208**  
"Cash buyer - good used equipment"

**JOHN DEERE**

- TRACTORS**
- JD 7810 MFWD power shift, 3166 hrs \$59,000
  - JD 2950 MFWD, cab \$26,000
  - JD 4230 4-post PS w/265 loader \$18,500
  - JD 4010 cab \$10,000
  - JD 955 4WD w/70A loader 60" mower \$13,500
- TILLAGE EQUIPMENT**
- Brillion 24 X-Fold roller \$5,500
  - Brillion 12 roller harrow \$2,250
  - JD 2500 5b spring reset plow \$3,000
- COMBINES**
- JD 9550 2WD 2000 Contour Master 500 hrs \$128,300
  - JD 9500 2WD 1994 1900 hrs \$85,000
  - JD 6620 2WD 1980 Reconditioned \$20,000
  - JD 922 flex head \$12,000
  - JD 224 flex head \$1,500
  - JD 343 corn head w/adaptor plate \$3,500
  - JD 643 Lo-Tun Oil Bath, Corn Head \$10,000
- FORAGE EQUIPMENT**
- NH 790 forage chopper 5 grass head, 2R corn head metal detector \$8,500
  - Gehl 970 forage wagon \$5,500
  - JD 716 forage wagon \$4,250
  - JD 35 chopper \$300
  - JD 16A flail chopper \$2,250
  - JD 3940 forage chopper \$2,250
  - JD 2RW head green \$1,650
  - JD 3R row crop head as is \$3,500
  - JD 3R row crop head for parts \$1,000
  - JD 12 Direct cut head \$4,500
- CORN/SOYBEAN PLANTERS**
- JD 1240 4R corn planter w/dry fert \$750
  - JD 7000 6RN planter dry fert unit coulters as is \$2,500
  - JD 7000 6RN planter liquid fert frame coulters, as is \$3,500
  - JD 7000 6RN planter dry fert frame coulters \$4,500
  - JD 7200 6RN dry fert \$9,500
  - JD 7200 6RN liquid fert \$15,000
  - JD 7240 11R corn & soybean planter dry fert \$23,500
- GRAIN DRILLS**
- Lilliston no-til grain drill \$5,750
  - Brillion 5 3pth seeder \$1,900
  - Brillion 5 3pth seeder \$750
- HAY EQUIPMENT**
- JD 1219 mo-co \$4,500
  - JD 335 round baler \$8,800
  - JD 446 round baler demo \$10,500
  - JD 535 round baler w/net wrap \$15,000
  - JD #50 sickle bar mower \$800
- SKID STEER LOADERS**
- JD 675B skid steer loader \$7,250
  - JD 8875 skid loader cab \$13,000
- MISCELLANEOUS**
- Oswalt 250 mix wagon \$10,000
  - Land pride 72 finish mower \$1,500
  - Woods 6215 mowing machine diesel w/72 mower 650 hrs \$7,100
  - Taylor 15 batwing rotary cutter \$3,500
  - JD 54 rotary cutter 4 \$400
  - JD 1518 15 Batwing rotary cutter \$7,000

**GLADHILL TRACTOR MART, INC.**  
900 East Patrick St.  
P. O. Box 777  
Frederick, Maryland 21701  
(301) 663-6060 1-800-245-0691  
Clark Bryan

**CASE CREDIT**

Visit our Web Sites at www.caseih.com and www.casecredit.com  
Case IH and Case Credit are registered trademarks of Case Corporation

**CASE III**