



HOSTETLER

Truck Bodies & Trailers

717-667-3921

Milroy Exit off Rt. 322
Between Lewistown & State College

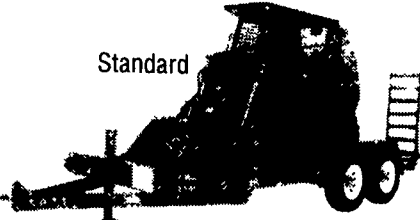
Choose HOSTETLER'S and Look at all of Your Choices.

Most Popular Models in Stock For Your Inspection
Call For A Brochure Which Includes Models and Prices.
Constantly Striving to Bring You The Best Products Available



CORNPRO

Best Buys on
Loader Trailers



Standard

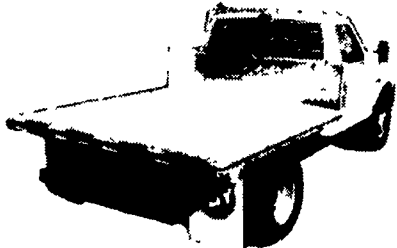


Tilt

None Better
At Our
Competitive Prices



Aluminum Trailers
& Truck Bodies



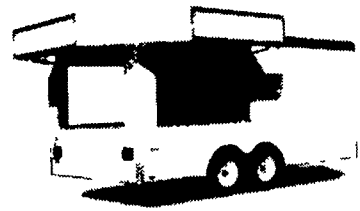
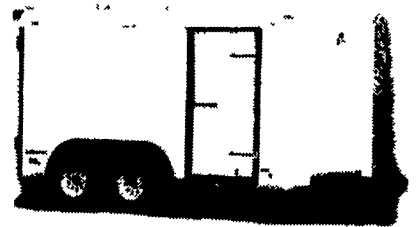
Excellence in
Design and
Construction



Largest Variety
of Dump Trailers
Available Anywhere



Cargo, Auto
& Concession



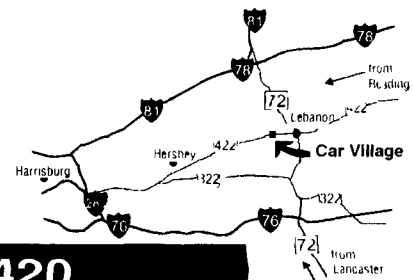
Any Type and
Size Available

Business Hours:
Mon.-Fri. 9 to 9;
Sat. 9-4

2300 W.
CUMBERLAND ST.
(Rt. 422)
LEBANON, PA 17042
(Across From
Lebanon Valley Mall)

CAR VILLAGE

HEAVY DUTY TRUCKS



PHONE 717-274-2000 Toll Free 1-800-650-1420



HOT ONE 99 FORD 550 CREW CAB 4x4
Not Many Of These Out There Powerstroke Diesel,
5 Sp, Loaded XLT, Aluminum Bed, Gooseneck &
Class 3 Hitches.



550 CREW CAB CHASSIS
4 WHEEL DRIVE 1999 FORD
Very Rare Find, XLT Powerstroke, Auto, 17,500 GVW,
Trailer Tow Mirrors, New Truck Warranty



ONLY 17,000 MILES
97 FORD SUPER DUTY DUMP TRUCK
I-Pak Tool Box, Triple Tipper Box, Fold Down Sides,
Powerstroke Diesel, 5 Sp, A/C, Like New



CREW CAB TOW MACHINE 97 FORD F350 XLT
The Nicest And Only 36,000 Miles, Powerstroke Diesel,
AT, A/C, Full Power Inside And Lots Of
Tow Power Outside Come Drive This One



1 TON DIESEL - 99 FORD F350 4x4
Powerstroke Turbo Diesel, 6 Sp Trans, Trailer Tow Pkg,
3 73 Limited Slip Axle, Heavy 9,900 GVW,
Alum Wheels, Ready To Go



DUMP IT 99 FORD 450 DUMP TRUCK
Real Clean And Only 47,000 Miles, Powerstroke
Diesel, 6 Sp, A/C, Remaining New Tk, Warranty, 9 Ft
Bed, Steel Floor, Removable Sides



4x4 STAKE BODY DUMP
98 DODGE 3500
Only 36,000 Miles, Remainder New Tk Warranty,
24 Valve Cummins, Diesel, 5 Spd, A/C, 12 Foot Body



4x4 CHASSIS CAB
2000 FORD F450 - RARE 4x4
Heavy 15,000 GVW, 165 WB, 84" C.A.
Powerstroke Diesel, 6 Sp, A/C, 31,000 Miles,
Remainder New Tk Warranty



5 SP CUMMINS
2000 DODGE 2500 QUAD CAB
Vinyl Seat & Floor, 24 Valve Cummins, Diesel,
5 Sp, A/C, Dana Axles, Limited Slip Axles
Only 27,000 Miles, Very Nice, Only \$27,900



2 WHEEL DRIVE
95 DODGE 2500 CUMMINS
Turbo Diesel, AT, A/C, Heavy Duty 3/4 Ton,
Very Nice, Asking \$13,900



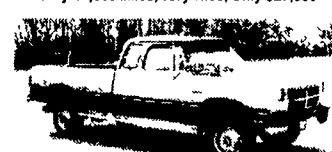
CLUB CAB UTILITY 97 DODGE 2500 4x4
Here's A Rare Find, Strong Cummins Diesel, AT, A/C,
Only 42,000 Miles, Limited Slip Axle,
Clean Omaha Box



FLATBED DUMP
97 FORD F350
Very Clean, Only 50,000 Miles, 351 Fuel Inj.,
V6, AT, 9 Ft. Steel Body



EBY FLATBED
2000 FORD F-550 SUPER DUTY
Great Hauling Machine, Only 6,900 Miles, Powerstroke
Diesel, AT, A/C, Capt. Chairs, Console, 6-Way Power
Driver Seat, Gooseneck Ball, heavy 17,500 GVW



CUMMINS DIESEL 93 DODGE 250 CLUB CAB
4 Wheel Drive, Very Nice Solid Tk,
AT, A/C, Bench Seat, Lock Out Hubs,
Excellent Body, Tow Pkg.



SHORT BED DIESEL 98 DODGE 2500
Club Cab, 4x4, Diesel, AT, A/C, Tow Pkg,
Looks Grnd, Runs Great



12 FT. FLATBED
98 DODGE 3500
Nice, Clean, Only 30,000 Miles, 24 Valve Cummins,
Turbo Diesel, 5 Spd, A/C, 4 10 Gear, Tow Pkg



4x4 FLATBED
95 FORD F350
Strong & good looking, powerstroke turbo diesel,
AT, Vinyl Seat & Floor, Limited Slip Axle, 8 Ft. Body,
Removable Sides



GOOSENECK HAULER - 98 CHEVY HD 3500
High Output 6.5 Turbo Diesel, AT, A/C, Heavy 15,000,
GVW Chassis, 4 Wheel Disc Brakes, Steel 9 Ft. Bed



BEAUTIFUL
99 GMC K3500 4-DOOR
4WD, Only 13,000 Miles, All Remaining Fact Warranty,
High Output, 6.5 Turbo Diesel, 5 Spd, Capt Chairs,
Console, Loaded, All Options



88,000
90 FORD F250 SUPER CAB 4 WHEEL DRIVE
7.3 Diesel, AT, Heavy Duty 3/4 Ton, Dual
Tank, Tow Pkg



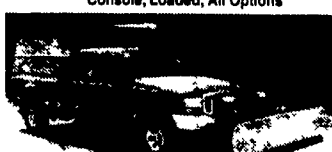
6 WHEEL DRIVE
99 FORD 550 CHASSIS CAB
Rare and Hard To Find, 6 Sp Trans,
Strong Powerstroke Diesel, A/C, Tilt Cruise,
165 W.B., 84" C.A., New Tk. Warranty



4x4 CHASSIS CAB 2000 FORD SUPER DUTY
Powerstroke Diesel, AT, AC, 201 W.B.,
117 C.A., Trailer Tow Pkg.,
Ready For Your Body!



RARE FIND 99 MITSUBISHI FUSO
4WD, Only 7,000 Miles, Turbo Diesel, 5 Spd, A/C,
12 Ft Steel Body



CONTRACTOR'S SPECIAL 1 TON QUAD CAB 99
FORD F350 4x4 Almost New, Only 21,000 Miles,
Powerstroke Diesel, AT, Meyers Power Angle Plow,
Reading Work Box, Ladder Racks & Plenty More
Remaining New Tk Warranty



CUMMINS DIESEL
97 DODGE 2500 4x4
Strong Cummins Turbo Diesel, AT, A/C,
Tow Pkg, Chrome Wheels, Real Good Looker



LANDSCAPER'S DREAM
93 INTERNATIONAL 4700 BACK PACK DUMP
6 Cy Turbo Diesel, 5 Spd Trans, 12 Ft Body w/Tool
Box and Tow Pkg, Mini Condition Only 25,000 Miles



SHORT CHASSIS CAB
95 CHEVY HD 3500
Heavy 15,000 GVW, Sht 137 W.B., 60" C.A.,
6.5 Turbo Diesel, 5 Spd., A/C



5 SP POWERSTROKE
96 FORD F250 4x4
Priced Right Only \$17,900, A/C,
Limited Slip 4 10 Gear, Dual Tank



6 SPD POWERSTROKE
99 FORD F250 QUAD CAB
4 Wheel Drive, Farm Style, Vinyl Seat & Floor,
Tow Pkg, Strong Powerstroke Diesel, A/C



4x4 POWERSTROKE
99 FORD F250 4x4
Loaded XLT, Powerstroke Diesel, AT, AC, Only 39,000
Miles, Comfortable, 40/20/40 Seat, Aluminum Wheels