

Westminster Livestock

Hagerstown, Maryland
Report Supplied by Auction
May 22, 2001

SLAUGHTER COWS: 79 HEAD, STEADY. BREAKERS 46.00-50.00, HIGH DRESSING TO 52.75, LEAN 40.00-45.00, THIN AND SLOW 35.00 DOWN.

BULLS: 14 HEAD YG#1 59.00-62.00, YG#2 55.00-58.50.

FED STEERS: 36 HEAD, 2.00 HIGHER. HIGH CHOICE TO PRIME 1100-1500 LBS. 79.00-80.75, 2 FANCY INDIVIDUALS 82.50 AND 84.75; CHOICE 2-3 77.00-80.00, HIGH CHOICE 1500-1625 LBS. 74.00-78.25, 1650-1850 LBS. 66.00-71.75; HOLSTEIN STEERS HIGH CHOICE 1100-1400 LBS. 66.00-67.25, 1 1640 LBS. AT 64.75.

FED HEIFERS: 17 HEAD, STRONG DEMAND. HIGH CHOICE TO PRIME 1100-1400 LBS. 77.00-79.00, 2 HEAD 1350 LBS. AT 82.00 AND 83.24, CHOICE 1000-1300 LBS. 68.00-76.00.

CALVES: 68 HEAD. GOOD TO CHOICE 200-300 LBS. 90.00-104.00, GOOD 80-110 LBS. 55.00-71.00; HOLSTEIN BULLS RETURNING TO FARM, STEADY. #1 95-120 LBS. 160.00-180.00, 80-94 LBS. 135.00-155.00; HOLSTEIN HEIFERS #2 75-110 LBS. 200.00-310.00.

BUTCHER HOGS: 36 HEAD, 2.00 LOWER. #1 240-275 LBS. 45.00-46.25, 195-250 LBS. 47.00-49.00; #1 AND 3 240-280 LBS. 44.00-45.00; #2 AND 3 42.00-44.00, 1 LOT 318 LBS. AT 37.00.

SOWS: 12 HEAD, HEAVIES 2.00 LOWER. 350-500 LBS. 33.50-37.25,

500-600 LBS. 38.00-40.25.
BOARS: 1 674 LBS. AT 22.50.
STOCK CATTLE: 99 HEAD.
STEERS, SCARCE. 300-500 LBS. 90.00-96.00, 500-700 LBS. 71.00-85.00, 700-900 LBS. 69.00-78.00, 1000-1200 LBS. 64.00-70.00.

HEIFERS: MED. AND LARGE FRAME 200-400 LBS. 78.00-99.00, 400-600 LBS. 75.00-88.00, 600-800 LBS. 70.00-78.00, 800-1100 LBS. 58.00-69.00.

BULLS: MED. AND LARGE FRAME 200-400 LBS. 88.00-104.00, 400-600 LBS. 76.00-94.00, 600-800 LBS. 65.00-76.00.

SHEEP: 42 HEAD 22.00-38.00.
LAMBS: 75 HEAD, 2.00-5.00 LOWER. HIGH CHOICE TO PRIME 90-120 LBS. 90.00-103.00, 70-90 LBS. 92.00-119.00, 50-70 LBS. 102.00-117.00; 5 HEAD 38 LBS. AT 125.00; MDIUM TO GOOD 70-100 LBS. 80.00-90.00, 40-70 LBS. 90.00-100.00.

GOATS: 54 HEAD, LARGE BILLIES AND WETHERS 85.00-112.00; MEDIUM 50.00-75.00, LARGE NANNIES 75.00-95.00, MED. NANNIES 40.00-70.00, FLESHY LARGE KIDS 45.00-65.00, SMALL KIDS 15.00-35.00.

PIGS AND SHOATS: 131 HEAD, BULK SOLD BY THE LB. BY THE HEAD 20-35 LBS. 22.00-29.00; BY THE LB. 20-40 LBS. 75.00-99.00, 40-65 LBS. 80.00-90.00, 70-85 LBS. 70.00-80.00; 6 HEAD 116 LBS. 75.00-76.00, 140-190 LBS. 49.00-57.00; 1 STOCK BOAR 244 LBS. AT 37.00.

Belknap Livestock

Belknap, Pa.
Report Supplied By USDA, PDA
May 23, 2001

CATTLE 54...PDA...SLAUGHTER COWS STEADY. STEERS SELECT 1-3 65.50-66.00, FEW STANDARD 1-2 55.00-63.50

HOLSTEINS STEERS FEW STANDARD 1-2 52.00-59.00.

HEIFERS: FEW STANDARD 1-2 53.75-55.00

COWS: BREAKERS 75-80% LEAN 45.00-52.00, BONERS 80-85% LEAN 39.00-45.00, 85-90% LEAN 35.00-40.50, SHELLS 34.00 AND DOWN.

BULLS: YG#2 960-2215 LBS. 49.25-57.00.

FEEDER CATTLE: HEIFERS MED AND LARGE 2 325-525 LBS 71.50-79.50; BULLS MED. AND LARGE 2 330-420 LBS. 62.00-75.00, 675-910 LBS. 51.00-59.00.

CALVES: 70...VEALERS STANDARD AND GOOD 90-120 LBS. 47.00-75.00, 60-80 LBS. 36.00-60.00.

FARM CALVES: HOLSTEIN BULLS STEADY, #1 HOLSTEIN BULLS 90-125 LBS. 130.00-170.00, #2 80-115 LBS. 85.00-122.50; #1 HOLSTEIN HEFIERS 90-95 LBS. 425.00-450.00, #2 70-100 LBS. 185.00-235.00.

HOGS: 29...BARROWS AND GILTS STEADY 49-54% LEAN 250-255 LBS. 48.00-48.50, 45-50% LEAN 220-275 LBS. 46.50-46.75, 40-45% LEAN 7 HEAD 282 LBS. 40.25.

SOWS: 1-3 410-530 LBS. 37.25-40.00, MEDIUM 268 LBS. 26.00.

FEEDER PIGS: 50...1-3 40-45 LBS. 44.00-49.00, 50-65 LBS. 53.00-57.50, 2-3

25 LBS. 35.00 PER HEAD.
SHEEP: 26...SLAUGHTER LAMBS CHOICE 35-45 LBS. 85.00-95.00, 55-75 LBS. 88.00-94.00, 80-90 LBS. 87.00-99.00.

FEEDER LAMBS: GOOD AND CHOICE 30-70 LBS 70.00-76.00.

SLAUGHTER SHEEP: 33.00-46.00

GOATS. 28. ALL BY THE HEAD, ONE MED. BILLY 52.00, MEDIUM NANNIES 37.00-45.00, LARGE KIDS 26.00-39.00, SMALL 6 AT 20.00.

Leesport Livestock Auction

Leesport, Pa.
May 23, 2001
Report Supplied By PDA

CATTLE 264...(PDA)...(Supply included 98 steers and heifers, 75 cows, 23 bulls and 68 feeder cattle).

STEERS: Choice 2-3 1290-1465 lbs 74.00-79.00, Select 1-3 70.50-74.50, one 79.25, Standard 1-2 54.00-68.75.

HOLSTEIN STEERS: High Choice and Prime 2-3 1465-1670 lbs 69.50-72.50, 1725-1785 lbs 66.25-66.75, Choice 2-3 1225-1665 lbs 65.00-70.00, 1795-1840 lbs 62.75-64.25, Select 1-2 57.00-64.75, Standard 1-2 48.00-56.50.

HEIFERS: Choice 2-4 1025-1380 lbs 72.75-78.50, Select 1-3 69.00-74.75, one 78.25, Standard 1-2 57.50-67.50.

COWS: Breakers 75-80% lean 49.50-53.75, Boners 80-85% lean 43.25-49.50, Lean 85-90% lean 37.00-47.00, mostly 39.00-45.00. Shells 36.50 and down.

BULLS: Yield Grade 1 1075-2380 lbs 57.00-61.50 with one 65.250, Yield Grade 2 1170-2305 lbs 54.00-58.75.

FEEDER CATTLE: STEERS: Medium and Large 1 255-290 lbs 117.50-135.00, Medium and Large 3 250-330 lbs 80.00-104.00, 430-500 lbs 84.00-91.00, 615-705 lbs 70.00-78.00; HEIFERS: Medium and Large 2 500-550 lbs 660.00-77.50, Medium and Large 3 240-350 lbs 65.00-90.00, 500-540 lbs 43.00-55.00, Large 3 Holstein 265 lbs 140.00; BULLS. Medium and Large frame 1 310-510 lbs 89.00-125.00, couple 695 lbs 62.50, Medium and Large 2 350-425 lbs 70.00-80.00 500-705 lbs 56.00-75.00.

CALVES 143. VEALERS: Standard and Good 70-120 lbs 50.00-72.50, Utility 60-65 lbs 27.50-30.00.

FARM CALVES. No 1 Holstein bulls 85-125 lbs 155.00-190.00 mostly 160.00-185.00, No 2 80-120 lbs 90.00-160.00, weaker calves to 70.00; No 1 Holstein heifers 5-120 lbs 395.00-425.00, No 2 70-75 lbs 170.00-285.00. Beef type bulls and heifers 90-110 lbs 145.00-210.00.

HOGS 84. BARROWS AND GILTS: 45-50% lean 245-280 lbs 46.00-47.75. 40-45% lean 215-275 lbs 40.50-44.50.

SOWS: 1-3 310-495 lbs 29.50-36.50, 520-695 lbs 33.50-39.00, few medium sows 415-465 lbs 26.00-27.50.

BOARS: couple 190 lbs 37.00.

FEEDER PIGS 174...1-3 15-20 lbs 13.00 per head, 20-30 lbs 65.00-125.00, 40-55 lbs 65.00-95.00 per cwt.

SHEEP 37...SLAUGHTER LAMBS: Choice 25-40 lbs 94.50-118.00, 50-80 lbs 87.50-111.00, 105-125 lbs 91.00-106.00.

SLAUGHTER SHEEP: 16.00-41.00, mostly 22.00-38.00.

GOATS 20...(All sold by the head). One medium Billy 67.00, One Medium Nanny 45.00, Large Kids 30.00-56.00.

- Dairy Facilities -

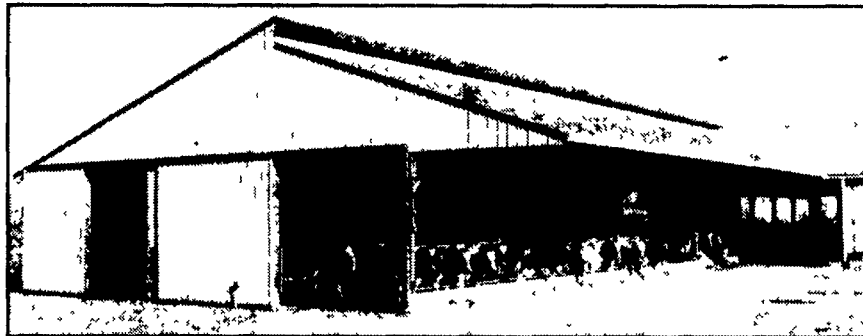
Large or Small,

Contact King Construction For Design and Construction



State-of-the-Art
1,000 Cow
Milking Facility

3 Row
Freestall
Barn



Free Stall Barn
and Milking
Parlor



Free Stall
Milking
Center



King Construction

601 Overly Grove Rd., New Holland., PA 17557
(717) 354-4740 • Phil Van Lieu (Home) (717) 259-9077
We Build in PA, MD, DE, NJ & NY

Citrus Pulp Pellets

- Pelleted or Ground
- Can blend with other commodities
- Contracts available
- Call for pricing and quantity

HERSHEY AG
Marietta, PA
(717) 653-8783
1-800-544-4574

Metal Roofing & Siding



Since 1948

A. B. Martin Roofing Supply
150 Slate Road, Ephrata, PA 17522
Why Pay More - For Less
BUY DIRECT • WE MANUFACTURE

Roofing & Siding in the following
Aluminum • Galvanized • Galvalume
18+ Color Painted, #1 & #2 Material
Low Prices - Fast Delivery
Free Literature . 1-800-373-3703
717-445-6885

**WHAT'S AHEAD FOR...
CATTLE, FEEDERS & HOG
FUTURES AND OPTIONS**



Lehigh Valley Futures, Inc. through its clearing FCM, offers access to all major exchanges' Futures and Options.

*Serving the Farm Community
for more than 30 years.*

When buying options, your risk is in some cases limited to the premiums paid plus transaction costs...

FOR INFORMATION, CONTRACT
DETAILS AND FUTURES AND
OPTIONS STRATEGIES...
PHONE (610)366-7979 or 800-543-8939

LEHIGH VALLEY FUTURES INC.

Commerce Plaza, Suite 249,
5000 Tilghman Street,
Allentown, PA. 18104
e-Mail: info@lvfutures.com
web site: www.lvfutures.com

The risk of loss in trading futures and option can be substantial. Futures and options trading may not be suitable for everyone. You should carefully consider the risks in light of your financial condition in deciding whether to trade.