

**PRODUCE MARKETS**

**Phila. Vegetable**

PHILADELPHIA Terminal  
May 23, 2001

Report Supplied By USDA

VEGETABLES -ARTICHOKES: ctns CA Globe Thorned 36s 10.00-12.00 few low as 8.00 -ASPARAGUS: MARKET HIGHER pyr ctns/crts 28 lb bchd WA WAExFcy Green lge 32.00-34.00 ord cond 8.00-10.00 std 36.00-38.00 sml 36.00 15 lb ctns lse WA WAExFcy Green jbo ord cond 4.00 -BEANS: MARKET ABOUT STEADY buctns/crts GA Round Green Type Machine Picked 9.00-11.00 mostly 10.00 few 8.00 5 lb ctns GU Hericot Vert (French Type) 10.00 1 1/9 buctns CA Fava 15.00 -BEETS: TOO FEW SALES TO QUOTE -BROCCOLI: MARKET ABOUT STEADY ctns CA bchd 14s 10.00-11.00 mostly 11.00 few low as 9.00 20 lb ctns lse CA Crown Cut 11.50-13.00 mostly 12.00 -BRUSSELS SPROUTS: OFFERINGS INSUFFICIENT TO QUOTE -CABBAGE: MARKET HIGHER 1 1/4 bucrts & 50 lb ctns GA Round Green Type med 8.00-10.00 mostly 8.00-9.00 Red Type med 12.00 sml-med 9.00 50 lb sks CD Round Green Type lge 10.00 1 1/4 bucrts & 40 lb ctns GA Savoy Type med-lge 12.00 -CARROTS: MARKET ABOUT STEADY sks 48 1-lb filmbags CA Topped med-lge 14.00-15.00 few 13.00 50 lb sks lse CA Topped jbo 15.00

MX Topped jbo 12.00-14.00 mostly 13.00-14.00 ctns bchd CA Bunched 24s 12.00 ctns 24 1-lb filmbags CA Baby Peeled 17.00 ctns 20 1-lb filmbags CA Baby Peeled 13.00-14.00 ctns 12 2-lb filmbags CA Baby Peeled 17.00 -CAULIFLOWER: MARKET SLIGHTLY HIGHER ctns flmwrpd CA 12s 9.00-11.00 mostly 10.00 9s 8.00-10.00 -CELERY: MARKET ABOUT STEADY ctns CA 2 dz 26.00 2 1/2 dz 25.00-27.00 flmbs 36s 22.00 MX 2 1/2 dz 25.00 -CHINESE CABBAGE: celcrts FL 14.00 30 lb ctns CA Nappa 12.00 50 lb ctns CA Nappa 16.00 FL Nappa 16.00 -CORN-SWEET: MARKET LOWER wbcrt FL Yellow 4-4 1/2 dz 12.00-14.00 fair cond 10.00 White 4-4 1/2 dz 12.00-15.00 mostly 14.00 few 16.00 -CUCUMBERS: MARKET ABOUT STEADY 1 1/9 buctns/crts GA Pickles med 20.00-22.00 fair qual 14.00-15.00 SC Pickles med 18.00-24.00 WAXED 1 1/9 buctns/crts GA med 10.00 few high as 12.00 fr qual 6.00-8.00 mostly 7.00 SC med 10.00 few high as 12.00 fr qual 6.00 -EGGPLANT: MARKET LOWER 1 1/9 buctns FL med 12.00-14.00 fair qual 9.00 ctns/crts MX 18s 12.00-14.00 24s 12.00-14.00 -ENDIVE: MARKET ABOUT STEADY 1 1/9 buctns/crts FL 10.00 NJ 10.00 10 lb ctns BL Witloof 13.00 -ESCAROLE: MARKET SLIGHTLY LOWER 1 1/9 buctns/crts FL 10.00 -GARLIC: MARKET STEADY 30 lb

ctns MX Purple super col 28.00 col 26.00 super jbo 24.00 exjbo 22.50 jbo 20.00 7 21.00-22.00 9 24.00-25.00 10 27.00-28.00 11 31.00-32.00 12 33.00-34.00 22 lb ctns/crts AG White 6 16.00-17.00 -GREENS: MARKET ABOUT STEADY ctns bchd CA Swiss Chard 12s 14.00 Red 12s 14.00 ctns/crts bchd GA Collard 24s 8.00 Kale 24s 8.00 MD Collard 7.00 Kale 7.00 NC Collard 7.00-8.00 few 6.00 Kale 7.00-8.00 Mustard 8.00 Turnip Tops 8.00 Rape 8.00 NJ Kale 6.00-6.50 ctns lse CA Kale Flowering 24s 17.00 -LETTUCE-ICEBERG: MARKET ABOUT STEADY ctns CA 24s 10.00-12.00 mostly 11.00 few 13.00 few 9.00 Wrapped 24s 12.00-14.00 few 11.00 occasional 15.00 fair cond 9.00 ord cond 2.00-5.00 -LETTUCE-OTHER: MARKET ABOUT STEADY ctns CA Boston 24s 10.00 Green Leaf 24s 10.00-11.00 mostly 10.00 few 9.00 occasional 12.00 Red Leaf 24s 10.00-11.00 mostly 10.00 few 9.00 occasional 12.00 MD Green Leaf 24s 7.00-8.00 Red Leaf 24s 7.00-8.00 3 lb ctns CA Mesculin Mix 6.50-7.00 mostly 7.00 -LETTUCE-ROMAINE: MARKET SLIGHTLY LOWER ctns CA 24s 10.00-12.00 mostly 11.00-12.00 occasional 14.00 MD 24s 6.00-7.00 NJ 24s 6.00-6.50 ctns 12 3-count pkgs CA Hearts 13.00 1.3 bucrts CA 24s 14.50 -MUSHROOMS: MARKET STEADY 10 lb ctns PA lge 15.00 few 14.50 med 11.75 few 11.50 4 qt bkts PA med-lge 6.50 sml-med 6.00 5 lb ctns PA Oyster 18.00-20.00 Portobellas 9.00 sml 8.00 3 lb ctns PA Shiitake 14.00 fair qual 11.00 Oyster few 12.00 ctns 12 8-oz trays flmwrpd PA 10.25 ctns 10 10-oz trays flmwrpd PA 10.25 few 10.50 -OKRA: 1/2 bucrts FL sml-med 12.00-

14.00 -ONIONS GREEN: MARKET MX GREEN ONIONS HIGHER, OTHERS ABOUT STEADY ctns bchd CA 48s 12.00-13.00 MX 48s 12.00 sml 9.00-10.00 crts bchd NJ Leeks 12s 12.00 ctns bchd MX Leeks 12s 14.00 -PARSLEY: MARKET ABOUT STEADY ctns bchd CA Curly 60s 13.00 1 1/9 buctns/crts bchd NJ Curly 60s 12.00-15.00 Plain 60s 12.00-15.00 -PARSNIPS: OFFERINGS INSUFFICIENT TO QUOTE -PEAS GREEN: MARKET ABOUT STEADY 10 lb ctns GU Snow Peas Decalaxed 9.00-10.00 few 8.00 Sugar Snap Peas 15.00 few high as 19.00 -PEAS OTHER: OFFERINGS INSUFFICIENT TO QUOTE -PEPPERS: MARKET ABOUT STEADY 1 1/9 buctns MX Bell Type Red lge fair qual 17.00-18.00 1 1/9 buctns/crts CA Bell Type Green edge 11.00 FL Bell Type Green edge 7.00-10.00 lge 7.00-8.00 med-lge 6.00 med 5.00-6.00 mostly 6.00 Mxd Red And Green med-lge 6.00 Red edge 16.00 15 lb ctns MX Bell Type Red lge 20.00 Yellow lge 20.00 5 kg ctns NL Bell Type Orange 80-100mm 24.00-27.00 Red 80-100mm 24.00-25.00 Yellow 80-100mm 16.00-18.00 -PEPPERS OTHER: 1/2 buctns FL Jalapeno 16.00-18.00 Habanero 10.00 1 1/9 bucrts MX Jalapeno 36.00 Serrano 45.00 8 lb ctns MX Habanero 10.00 -RADISHES: MARKET ABOUT STEADY ctns tpd 30 6-oz filmbags FL Red 5.50-6.00 occasional higher few 5.00 ctns tpd 14 1-lb filmbags FL Red 6.50 occasional higher few 6.00 ctns bchd OH Red 24s 12.00 -RHUBARB: OFFERINGS INSUFFICIENT TO QUOTE -RUTABAGAS: OFFERINGS INSUFFICIENT TO QUOTE -

SPINACH: MARKET ABOUT STEADY 1 2/5 bucrts bchd CA Flat 24s 13.00 ctns 4 2-1/2-lb filmbags CA Flat 14.00 cel crt NJ Savoy lse 6.00-6.50 4 lb ctns CA Flat Baby Type 11.00 -SQUASH: MARKET ABOUT STEADY 1/2 buctns GA Zucchini sml-med 5.00-7.00 mostly 6.00 few 8.00 med 4.00-6.00 mostly 4.00 Yellow Straightneck sml-med 5.00-8.00 mostly 5.00-6.00 one lot 10.00 med 4.00-6.00 1 1/9 buctns/crts GA Acorn med 12.00 Spaghetti med 12.00 -SWEET POTATOES: MARKET ABOUT STEADY CURED 40 lb ctns NC U.S. One Beauregard med 13.00-14.00 fair appear 11.00 fair qual 9.00 jbo 9.00 -TOMATOES: MARKET SLIGHTLY HIGHER 25 lb ctns FL Vine Ripes light red-red 5x6s 17.00-18.00 6x6s 16.00-17.00 85% U.S. One or Better Mature Greens light red 5x6s 15.00-16.00 mostly 16.00 few 14.00 6x6s 14.00-15.00 few 13.00 Local Repack 85% U.S. One or Better Mature Greens light red 5x6s 18.00 6x6s 17.00 6x7s 16.00 5 kg ctns on the vine NL Vine Ripes Greenhouse light red-red med 12.00 -TOMATOES, CHERRY: MARKET ABOUT STEADY flts 12 1-pt bkts FL light red 10.00-12.00 flts 12 1-pt ctns with lids FL Grape Type red 11.00-13.00 mostly 12.00 flts 12 1-pt bkts MX red 10.00-11.00 -TOMATOES, PLUM TYPE: MARKET SLIGHTLY HIGHER 25 lb ctns FL light red-red 10.00-12.00 mostly 11.00 MX light red-red 9.00-11.00 mostly 10.00 -TURNIPS: MARKET STEADY 25 lb filmbags GA Purple Top med 9.00 NC Purple Top med 8.00 -VEGETABLES OTHER: OFFERINGS INSUFFICIENT TO QUOTE

**McElwee's Livestock**

Home of Shippensburg Cownet  
3 Locations To Serve You

**Newburg**

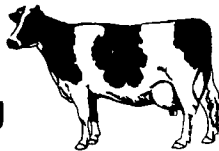
Mon. 9-4, Thurs. 9-2  
(717) 423-6869

**Woodsboro, MD**

Tues. 10-2  
(301) 845-6232

**Chambersburg**

Wed. 9-3  
(717) 267-3321



Receiving All Cows, Bulls, Steers, Calves  
Call For Daily Price Quotes

**NEED MORE FARM INCOME?**



**Build a new Wean to Finish barn.**

- › Turnkey package (building, equipment & production contract)
- › Empty & fill barn only twice a year
- › STEADY MONTHLY INCOME
- › Minimal labor requirements
- › Weaned pigs from our own sow units
- › Our experienced team will help you with this project
- › Within 60 mile radius of Mount Joy, PA

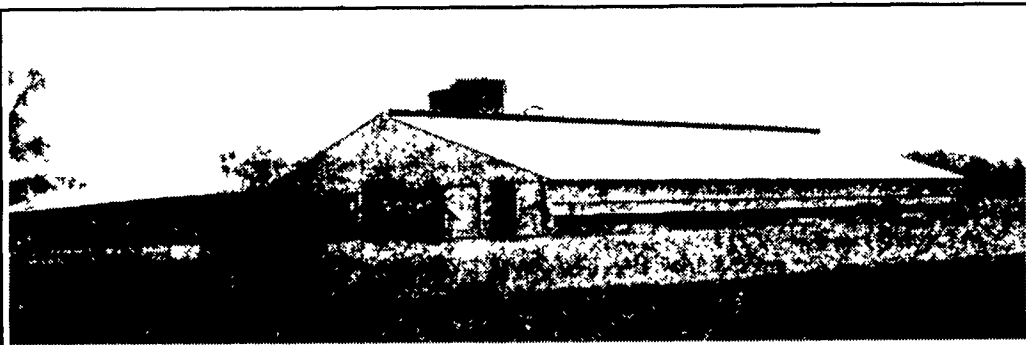
For more details contact  
Brent @ (800) 544-4574

**HERSHEY**  
**AG**

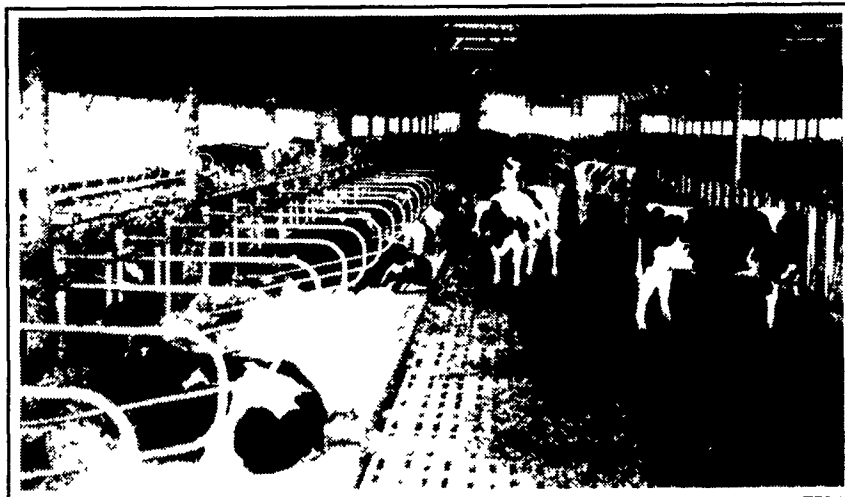
**EM**  
**Esbenshade Mills**



477 East Farmersville Rd.  
New Holland, PA 17557  
(717) 355-2361



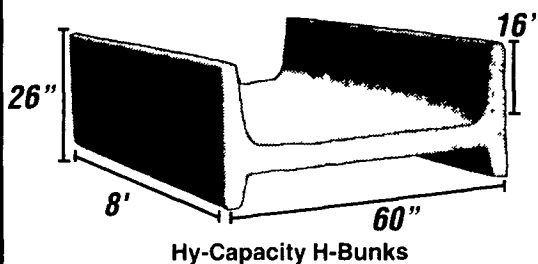
**Concrete Slatted Free Stall Barn**



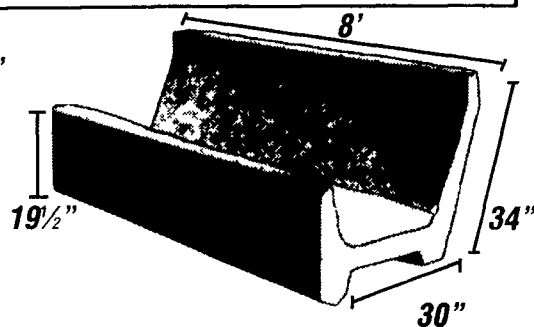
**Long Core Cattle Waffle Slats**



Precast Concrete T-Wall  
Bunker Silos or commodity  
buildings built to suit your  
needs. Bunkers available  
in 8 Ft. or 12 Ft. High



Hy-Capacity H-Bunks



Slant Back J-Bunks

End Sections Available For Feed Bunks

Give us a call for more information on hog, beef, dairy and heifer barns.