

**May 26, 2001
Special Qtr. Horse
and
Paint Horse Sale**



New Holland Sales Stables

125 Head Sell -- Registered and Grades -- Call Us With Your Consignments -- We Plan To Have Super Good Quality and Color

Special Note: Our Lab is now Available to test your horses for Coggins. Managed by Dr. James Holt

Sale Managed By
New Holland Sales Stables, Inc.
Barn 717-354-4341 Fax 717-355-0706
David Kolb, Mgr. 61L

Public Auction Register

Closing Date Monday 5:00 P.M.
of each week's publication
Internet Sale Register will be updated
every Sat. at 2:23 P.M.

**DAVID and BARBARA FRANK
COMPLETE CATTLE &
EQUIPMENT AUCTION**

Marathon, NY (Cortland area)

**THURS., MAY 24, 2001
@ 11:00 A.M.**

Auction held @ Farm on Jennings Creek Rd, Take I-81 to Exit 9, Take Rt 11 South, 3 miles to Killawog In Killawog, take Jennings Creek Rd approx 3 miles to farm Watch for Arrows

110 - Holstein Cattle - 110

Consisting of (75) mature animals, mostly all Holsteins w/approx (15) Jersey/Holstein (Holseys) crosses and a few Red & Whites, Approx (20) 1st Calves in herd, Freestall trained dairy, milked in a parlor, low SCC, 3.9 butterfat Always AI-bred, some cows milking over 100 lbs Herd averaging over 60# 30 Head fresh, 10 handling or bagging, some due in fall, balance in all stages A real nice uddered set of Cattle here!! Plus (35) Holstein Heifers from well started up to 6-7 mos bred Holstein & Black Jersey Service Bulls, A real nice group of Cattle here! Vet examined for pregnancy and shot for shipping fever

Farm Equipment (sells first)

JD 4450 - 4wd tractor w/full cab, and good tires all the way around! JD 4020 powershift w/Rops canopy, rebuilt motor, trans, brakes & new tires in 2000 - nice tractor, JD 48 loader w/own valve, Case 1030 Comfort King diesel tractor, IH 460 diesel utility tractor, wfe, Case 1840 Skid steer loader, Case 310 Dozer, diesel, good shape, Ford NH 900 Chopper, T/A, Metallert II, used 2 seasons, w/990 w PU head & 824, 2-row adj Corn head - real nice unit, JD 7000 4x corn planter w/all boxes, White 588 6x spring reset plow w/dish coulters, real nice, IH 18-20' transport harrow, spring loaded teeth, nice, (2) NH 716 - 3 btr SU wagons, T/A w/roof, NH 60 forage blower, NH 499 Hydro-swing haybine, JD 347 Baler w/kicker, nice, New Idea 486 Round Baler, Belts, nice, NH 254, 2-spool 3pth tedder, (2) wooden hay wagons, H&G transport elevator, Ford NH 306, T/A side delivery spreader, used three seasons, (2) AC SU wagons, (1) on JD 1065A Gear, 3pth Bale spear, 3pth, 11-shank chisel plow w/finishers, (2) Round Bale feeders, NH 668 Barrel spreader, (2) sets 18 4x34 double ring chains

Milking & Barn Equipment

Dari-Kool 1500 gal Bulk Tank, S/N 28970 w/washer & (2) compressors, Bou-Matic 2" pipeline/parlor system w/6 units, washer, & (6) 65lb weigh jars, 6-on-a side parlor, Universal 5ph vacuum pump, Bou-Matic 4-place computerized grain feeder w/computerized neck chains, Brock 10-ton feed bin w/Auger, 20' Jamesway ring drive silo unloader, 5 yrs old, Titan 20' silo unloader, Thermo-stor hot water heater, Sale order - 11 00 Farm Equipment, 11 45 Barn Equipment, 12 00 Cattle - Be on time, no small items.

Auctioneers Note - The Franks have been on this farm for 50 years, a good group of cattle & equipment here Plan to Attend!

Terms - Cash, Good Check, or major credit card w/positive ID Payment in full day of Auction Nothing removed until settled for

OWNERS:

DAVE & BARBARA FRANK

Lunch Available Comfort Facilities



Sales Managers & Auctioneers
Whitney Point, N.Y. 13862
607-692-4540 / 1-800-MANASSE
Fax: 607-692-4327
Members of NYSAA,
NAA and PAA Associations

Visit Our Website @ www.manasseauctions.com

Dairy and Livestock Sales

TUES AUG 21 - Fat Cattle Sales
Carlisle Livestock Market Inc,
548 Alexander Spring Rd,
Carlisle, Pa

WED AUG 22 - Farm Equip-
ment 109 N Maple Ave, Leola,
Pa Wolgemuth Aucts #2357

SAT AUG 25 8:30 Tack, 11AM
Horses Middleburg Livestock
Auction PO Box 185 Middleburg
Pa Clarence Shirk 717-656-8793
John Shirk 570-837-9935
FRI AUG 31 - 6PM Tack, 7 PM
Horses Penns Valley Livestock
Centre Hall Mel Hoover Auct

TUES AUG 21 - 7:45 PM Feeder
Cattle Sales Carlisle Livestock
Market, 548 Alexander Spring
Rd, Carlisle, Pa

FRI AUG 24 - 1 PM State Grad-
ed Feeder Pig Sales Carlisle
Livestock Market, Inc 548
Alexander Spring Rd Carlisle
Pa

DENNIS KOLB

DAIRY SALES, INC.
LANCASTER, PA



**FRESH COWS/BRED HEIFERS
GRADE & REGISTERED
STOCK BULLS - GOOD HERD AVAILABLE!**

NEXT PUBLIC AUCTION

Will Be At
Lancaster, PA



THURSDAY, JUNE 7, 2001



→ 7:30 P.M. ←

Phone 717-569-6800 - Dennis Kolb
717-569-2106

Sale Manager: Dennis Kolb Pedigrees: Daniel Albright
Auctioneer: Paul Snyder (AU-000873-L)

**SHORT NOTICE
PUBLIC AUCTION
COMPLETE DISPERSAL
HOLSTEIN DAIRY HERD
FARM MACHINERY - TRACTORS
HI-MOISTURE CORN
TUES., MAY 29, 2001
9 AM**

LOCATION: 649 North Railroad Ave New Holland PA From Rt 23 (Main St) in New Holland take North Railroad Ave to Auction on right or from Hinkletown Rt 322 East at Ephrata Natl Bank turn right onto N Railroad Ave to Auction on left

TRACTORS

John Deere 4320 Diesel Tractor w/Side Console on Steel
John Deere 2030 Diesel Tractor w/Rabbit/Turtle on Steel
MF 1085 Diesel Tractor on Steel
Challenger 4WD Diesel Loader

Farm Equipment

JD #2500 4B 18' Auto Spring Reset Semi Mt w/Hillside Hitch - ex cond JD BWA 12 Trans Disc Brillion 12' Finish Field Cult, 12 Cultipacker w/Center Bearing JD 7000 Conserv 4RN Cornplanter w/Monitor NH 278 Hayliner Baler w/Super Sweep Pickup, NH #679 Tandem Axle Single Beater Manure Spreader NH #718 Forage Harvester w/Elect Controls & 2RN Corn Hd NH 770W 6 Hay Hd , NH #28 Whirl-A-Feed Forage Blower JD #700 Grnder/Mixer w/Scales Zook #23 Tandem Axle Liquid Spreader NH #56 Hay Rake, Hardi 3 pt 160 Gal Field Sprayer w/30 Folding Booms Ford 3 pt 2R Cult Howard 6 3 pt Rototiller AC 6 Flail Chopper Dry Hill 8 Manure Pump 18 Flat Wagon w/8T Gear Hershey 2R Tob Planter w/200 Gal Poly Tank 7 Box Blade 21 Skeleton Bale Elevator Liquid Hay Preserve Applicator, 3 Tob Ladder Wagons NH 5 1/2' Material Bucket 5 Manure Fork Bucket, Dayton 40KW Generator (2) GSI 6 Ton Feed Bins w/New Augers Brock 24 Ton Feed Bin w/Auger, Pennfield 18 Ton Feed Body
Approx 5 Bales 4'x4'x8' Western Alf Hay
Approx 33 Bales 3'x3'x7' Corn Fodder
Approx 40'x6' Ag Bag Hi Moisture Corn

Rissler 610 TMR Portable Mixer

500 Gal Diesel Fuel Tank 200 Gal Gas Tank 1000 Gal Propane Tank 1000 Gal Poly Molasses Tank w/Valve, Modine 250 000 BTU Greenhouse Heater Millermatic Wire Feed Welder Metabo Portable Grnder Makita Circular Saw Makita 14V Cordless Drill Makita Saw Saw DeWalt Cordless Drill Elect Motors DeWalt 2 HP Radial Arm Saw B&D Cutoff Saw Handyman Jack Misc Hand Tools & Wrenches Stihl 039 Chain Saw Pel 605 Fencer Guardian L1100 Fencer Cow Trainers 5 HP 60 Gal Air Compressor 3 Compartment Tob Bale Boxes Lazy Susan Tob Stripper Beco 2000 PSI Hi Pressure Washer w/5 HP Elect Motor Misc Hand Tools Shovels Forks Brooms 4 x12 Shop Table
Rubber Tire Spring Wagon w/Lights 4 Yr Old Mare Driver Broke 8x12 Utility Barn.
Warm Morning 40 000 BTU Gas Heater Peerless 50 000 BTU Gas Heater Lg Miller Water Softener, Enterprise No 32 Meat Grinder w/Elect Motor

76 GRADE HOLSTEIN DAIRY CATTLE

52 Milking Age 5 Bred Heifers 5 Yearlings
10 - 6 month - 1 year 3 Heifer Calves 1 Breeding Age Bull

Milking Animals

5 Recently Fresh 12 Due this summer
Milk wts day of sale Pregnancy Checked Herd Averaging 55-60 lbs per day

Auctioneer's Note: This is a good herd with some fine individual cows and especially nice heifers This herd has a lot of potential and has not been pushed for high production
Dale Hoover Announcements 717 867 2489

New Butane Gas Calf Dehorner 65 Hd Herdex Sm Medicine Refridge These items to be sold before dairy herd

SALE ORDER: Auction to begin with sm wagon items immediately followed by machinery & tractors Dairy herd to be at approx 12 noon Terms are cash or PA check Food stand

Auction Conducted By

Terms By

Randal V Kline Roy Good Jr
Keith Snyder Auctioneers
Lic #2116 #499 #3433
717 445 4309

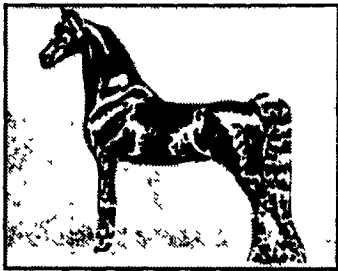


**PETER Z. &
ROSEANNE NOLT**
717-354-0182

MEL'S STABLE

S
E
L
E
C
T
E
D

C
O
N
S
I
G
N
M
E
N
T



DRIVING, WORK HORSE SALE

SAT., JUNE 2, 2001 - 10:00 AM

NOTICE: NEW SALE TIME 10 AM

HORSES HITCHED AT 8 30 A M SHARP
SALE HELD AT 834 WALLACE RD, NEW HOLLAND, PA
DIRECTIONS FROM RT 23 IN NEW HOLLAND, GO SOUTH ON BRIMMER AVE, GO 2 MILES SOUTH ON NEW HOLLAND ROAD TO HILL RD TURN LEFT ON HILL RD PROCEED 1.2 MILES TO SALE ON THE LEFT FROM RT 340 EAST OF INTERCOURSE TAKE NEW HOLLAND RD, 2.5 MILES TO HILL RD, RIGHT ON HILL RD TO SALE ON LEFT

APPROX. 75 HEAD OF STANDARD BRED HORSES
APPROX. 50 HEAD OF SADDLE BRED HORSES

PLUS MANY MORE HAND PICKED TOP QUALITY HORSES!!
DON'T MISS THIS SALE!!! IF YOU ARE IN NEED OF A HORSE,
COME AND FIND THAT SPECIAL HORSE.

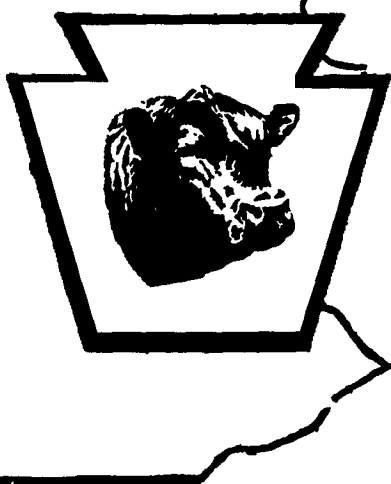
MEL'S STABLE
OWNER - MEL HOOVER
PHONE - HOME - 717-354-8397
BARN - 717-354-6431
AUCT. MEL HOOVER AU003111L
NOT RESPONSIBLE FOR ACCIDENTS
FOOD ON PREMISES

Next Horse Sale: June 23, 2001

8th Annual

**PENNSYLVANIA'S
FINEST FEMALES
SALE**

Saturday, June 2, 2001
Golden Rule Farm, New Enterprise, PA
**CATTLE PRICED TO FIT
YOUR WALLET!**



Proud to be your host for 2001...

The Detwilers - Allen, Joy & C.A.
880 Golden Rule Drive
New Enterprise, PA 16664
(814) 224-4115 Home
(814) 766-2614 Business
(814) 766-2619 Fax

Come Friday evening,
June 1, 2001 for
Angus Fun, Food &
Fellowship

**Golden
RULE FARMS**

MEASURE THE DIFFERENCE

LOCATION - Off PA Turnpike (north on I-99) to exit 869 Go east, watch for signs to Golden Rule Farms, New Enterprise, PA
HOTEL ACCOMMODATIONS - Super 8 Motel (816) 623-5880 * Hampton Inn (814) 624-0101.

Sale Sponsored by -

Pennsylvania Angus Association

Sale Managed by -

For your free reference sale booklet, contact anyone in the office of the Sale Managers, TOM BURKE/KURT SCHAFF/RANCE LONG, AMERICAN ANGUS HALL OF FAME at the WORLD ANGUS HEADQUARTERS Box 660, Smithville, MO 64089-0660 Phone (816) 532-0511 Fax (816) 332-0851
E-mail angushal@earthlink.net • www.angushall.com