



MAY 21-27, 2001

NEW MOON, MAY 22

ONE HUNDRED YEARS AGO...

Spring cleaning took a leap forward in 1901 when Hubert Booth invented the first practical electric vacuum cleaner. Unlike the portable vacuums of today, his was sent out with a crew that went door-to-door, offering to vacuum the dust and dirt out of houses using long tubes. Just imagine—you have your milkman, your fish peddler, and now your vacuum man. In 1907, the Hoover Suction Sweeper Company improved on the design, and in 1921, a Swedish lamp salesman produced further developments and started the Electrolux Company. But what ever happened to that crew of vacuumers?



Progress might have been all right once but it has gone on too long. —Ogden Nash, American poet (1902-1971)

TIP OF THE WEEK

☞ Sprinkle a little lavender or lemon juice onto your vacuum bags to refresh the air as you clean.

SCALLOPED POTATOES

- 1/4 cup (1/2 stick) butter
- 5 to 6 medium baking potatoes
- 2 cups whole milk
- salt and pepper, to taste
- 1 cup shredded sharp Cheddar
- 1/4 cup chopped onion
- 2 tablespoons all-purpose flour

Preheat oven to 400°F. Butter an 11x7-inch baking pan. Peel and slice potatoes into 1/4-inch rounds. Heat milk to a near boil. Layer half the potatoes in the baking pan, sprinkle with salt and pep-

per, dot with butter, and add half the cheese, onions, and flour. Then repeat the layering, but set aside the final half-cup of cheese. Pour hot milk over all, cover with foil, and bake for 45 minutes. Sprinkle with remaining cheese, and bake for another 15 minutes.

Makes 8 servings.



The OLD FARMER'S WEATHER PROVERBS



If fowls roll in the sand, rain is at hand.

Dandelions and daisies close before rain.



ATTENTION, GARDENERS!

The spring 2001 *Gardener's Companion* is now on sale. You can buy it at supermarkets, bookstores, or garden centers. Or send \$3.99 to The Old Farmer's Almanac, Dept. GCSP, P.O. Box 520, Dublin, NH 03444.

Pa. Weekly

13 Livestock Auctions

Friday, May 11

Report Supplied By PDA

CATTLE 4557... Compared with 4553 head last week and 4122 head a year ago. Compared with last Friday's summary..sl. steers mostly steady on Choice grades and higher while Select grades showed mostly 1.00 lower, heifers uneven, mostly steady, cows active 1.00 to 2.00 higher, bulls steady to 1.00 higher.

STEERS: High Choice and Prime 2-4 79.00-82.75, Choice 1-3 75.00-80.50, Yield Grade 4 to 74.00, Select and Low Choice 2-3 73.00-76.00, Select 1-3 68.00-75.75, high dressing to 77.25, Standard 1-2 63.00-68.00.

HOLSTEIN STEERS: High Choice and Prime 2-3 69.25-71.00, Choice 2-3 65.00-70.25, Select 1-2 57.50-65.25, Standard 1-2 51.50-57.75.

HEIFERS: Choice few Prime 2-4 74.25-80.75, Select 1-3 68.00-75.75, Standard 1-2 53.00-66.00.

COWS: Breakers 75-80% lean 45.75-54.25, Boners 80-85% lean 42.25-49.75, Lean 85-90% lean 37.00-42.75, high dressing to 47.00. Shells 35.00 and down.

BULLOCKS: Choice 2-3 74.50-77.50, Select 1-3 65.00-68.75.

BULLS: Yield Grade 1 1000-2500 lbs 57.00-65.50, Yield Grade 2 900-2400 lbs 49.00-58.00.

FEEDER CATTLE: STEERS: Medium and Large 1 300-500 lbs 90.00-108.00, 500-700 lbs 82.00-89.00, Medium and Large 2 300-500 lbs 75.00-98.00, 500-700 lbs 68.50-79.00; **HEIFERS:** Medium and Large 1 300-500 lbs 86.00-100.00, 500-700 lbs 73.00-95.00, Medium and Large 2 300-500 lbs 70.00-92.50, 500-700 lbs 68.00-75.00; **BULLS:** Medium and Large 1 300-500 lbs 80.00-92.50, Medium and Large 2 300-500 lbs 73.00-82.00.

CALVES 2996... Compared with 3351 head last week and 2814 head a year ago. Vealers steady to firm... **VEALERS:** Choice 150-310 lbs 100.00-130.00, Good 140-290 lbs 87.00-90.00, Standard and Good 75-110 lbs 40.00-70.00, Utility 55-100 lbs 20.00-45.00; **FARM CALVES:** Holstein bull calves mostly steady with good strength at end of week, Holstein heifers fully steady; No 1 Holstein bulls 80-120 lbs 150.00-200.00, No 2 80-120 lbs 100.00-169.00, weaker calves to 80.00; No 1 Holstein heifers 80-120 lbs 365.00-495.00, No 2 80-120 lbs 200.00-350.00.

Beef type bulls and heifers 75-130 lbs 120.00-200.00.

HOGS 1758... Compared with 1550 head last week and 1600 head a year ago. Barrows and gilts steady to mostly 1.00 higher, sows mostly 2.00 higher.

BARROWS AND GILTS: 49-54% lean 220-275 lbs 48.00-51.00, 45-50% lean 220-275 lbs 45.00-48.00, 40-45% lean 240-300 lbs 42.00-45.00. **SOWS:** US 1-3 300-500 lbs 37.00-43.00, 500-700 lbs 42.75-45.00. **BOARS:** 16.50-21.00.

FEEDER PIGS 209... Compared with 80 head last week and 142 head a year ago. US 1-3 25-50 lbs 21.00-57.00, 50-65 lbs 62.00-66.00 per head.

SHEEP 1479... Compared with 1418 head last week and 1891 head a year ago. Slaughter lambs steady to 5.00 lower. **SLAUGHTER LAMBS:** Choice 20-50 lbs 120.00-146.00, 60-90 lbs 113.00-132.00, 90-125 lbs 80.00-105.00, Good and Choice 35-65 lbs 90.00-120.00. **SLAUGHTER SHEEP:** 26.00-50.00.

ONE GRADED FEEDER PIG SALES 309... Compared with 829 last week 367 head a year ago... Feeder pigs active 30.00 to 45.00 higher..US No 1-2 25-55 lbs 126.00-130.00; US 2 30-35 lbs 125.00, 40-55 lbs 107.00-117.00; Slaughter 20-35 lbs 155.00-187.00, 90-125 lbs 70.00-92.00 per cwt.

National Sheep Summary

San Angelo, Texas

May 15, 2001

Report Supplied By USDA

At midwest market centers, slaughter lambs steady; slaughter ewes 2.00 higher; feeder lambs steady. At New Holland, PA, slaughter lambs 10.00 lower; slaughter ewes steady to 5.00 higher. At San Angelo, TX, slaughter lambs not well tested; slaughter ewes mostly steady; feeder lambs 5.00-8.00 lower. Estimated receipts 8500 head for today.

SLAUGHTER LAMBS: Choice and Prime 2-3 90-150 lbs: San Angelo: shorn and woolled 80.00-84.00; new crop 90.00-96.00. Midwest: shorn 83.00-85.00; woolled 75.00-80.00; new crop 85.00-87.00. Virginia: new crop 100.00. New Holland, PA: 80-110 lb. 100.00-125.00.

SLAUGHTER EWES: San Angelo: Good and Choice 2-4 35.00-45.00; Good 2-3 44.00-53.00; Utility and Good 1-3 50.00-60.00; Utility 1-2 40.00-50.00; Cull and Utility 1-2 32.00-40.00. Midwest: Utility and Good 1-3 30.00-35.00; Cull 1-2 22.00-28.00. New Holland: Good and Choice 2-4 45.00-65.00; Utility and Good 1-3, 25.00-45.00. Billings, MT: Good 2-3 no test; Utility 1-2 no test; Cull 1 no test.

FEEDER LAMBS: Medium and Large 1-2: San Angelo: new crop 60-80 lbs 95.00-97.00. Midwest: 60-80 lbs 100.00-110.00; 80-100 lbs 85.00-100.00. Billings: no test. Virginia: 50-70 lbs 100.00; 70-85 lbs 101.00.

REPLACEMENT EWES: Medium and Large 1-2: San Angelo: Yearlings 98.00 per head; baby tooth 91.00-94.50 per head; solid mouth 87.00 per head; mixed age 110-145 lb 61-66.00 cwt. Billings: no test.

Incredible Prices !!!

UP TO

60% OFF

SUPER HEAVY STEEL

- Equipment Storage!
- Workshops!

FAST AND SIMPLE TO ERECT!! NO CRANE NEEDED!!

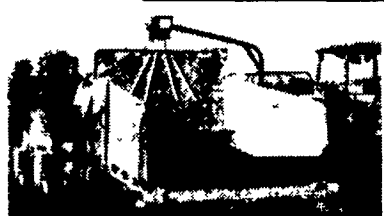
- AVAILABLE MODELS**
- 30 x 50 (2 LEFT)
 - 40 x 64 (3 LEFT)
 - 45 x 80 (2 LEFT)
 - 52 x 100 (1 LEFT)
 - 55 x 120 (2 LEFT)



EXCELLENT FOR HAY AND GRAIN STORAGE

800/825-5059

AG-BAG INTERNATIONAL LTD



10' & 12' Ag-Baggers for Trucks
Used & Rental Machines

- 1 G6009 Bagger 96 model
- 1 G6008 Bagger 98 model
- 6 G6008 Bagger 99+ model
- 1 G6009 Bagger 98 model
- 8 G6009 Bagger 99 model
- 3 G6009 Bagger '00 model
- 1 MR5603 Round Bale Tuber
- 1 MR602 Square Bale Tuber
- Mighty Bites & Grain Bagger



6'-10' Ag-Baggers

Custom Bagging & Tubing
Large Rental Fleet
Call Toll Free
877-412-4224
New & Rental
Machine Sales

Agri-Service LLC Rental & Custom Services

14137 Pennsylvania Ave ~ Hagerstown, MD 21742
(301) 665-9333 or TOLL FREE (877) 412-4224

VECTOR TOBACCO UPDATE

SEEDLING DELIVERY

- NO VECTOR SEEDLING DELIVERY ON THURSDAY, MAY 24, ASCENSION DAY
- Delivery will be made Monday through Saturday, May 21-26
- Make sure someone at the farm knows where you want your plants and can help unload, just in case you are not home when they are delivered
- Please fill out and return your survey postcard TODAY!
- Do not give Vector plants to ANYONE, do not "share" them with your neighbor, do not change around your order with your brother/neighbor! Call our office if you have questions and need more plants to finish. We'll bring them out. If you have some left over after you are all thru planting for the year, we'll pick them up

Working with Vector is your local tobacco company:



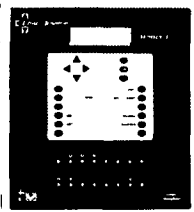
641 Spruce Rd.,
New Holland, PA 17557
717/351-9221
Office Hours
Monday-Friday, 9 AM - 4 PM

Jerry Winstead, President, Larry Weaver, Manager,
Gail Sensenig, Supervisor



Join the list of successful growers who have improved their performance with Chore-Tronics controls. Ventilation computers keep your birds in the comfort zone 24-7. Up to forty outputs. Networkable for remote monitoring and operation.

CALL FOR PRICING



Not all products may be available at both locations. We will however be happy to ship to your location or to our store on our next re-stocking shipment.

SPRING SPECIALS

BOOSTER PUMPS in box

- 1/3hp \$222 00
- 1/2hp \$286 00
- 3/4hp \$295 00
- 1hp \$331 00

STOCK FANS on sale

- 36 DD with hardware \$185 00
- in qty's of 10 or more \$180 00
- CT 48" EZ BD Fan \$405 00
- 48 & 52 Fans CALL

PLASTIC FOGGING NOZZLES

- 1 gal nozzles \$77
- 1 gal nozzles 100 or more \$70
- 1 1/2 gal nozzles \$77

COOL CELL Pads & Systems

- 2 x2 x4 Paper Pad \$17 70
- 2 x2 x5 Paper Pad \$16 12
- 2 x2 x6 Paper Pad \$27 70
- *HOG HAIR CALL
- CT 6 Recirculating CALL

CHEMILIZER Medicators

- HN55 \$209 00

COMPLETE Tunnel Retrofits

CALL

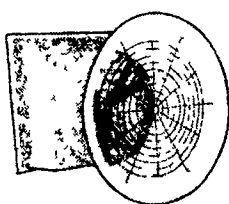
TURBO® FANS

Never need replacement. Chore-Time's Turbo fans are rugged and efficient with fiberglass housing, cast aluminum blade and one piece plastic cone. High CFM and high CFM/watt.

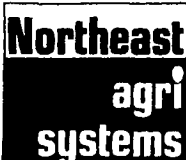
CHORE-TIME TURBO

48 Belt-Drive fan w/cone CALL

New black/white fan for dark out houses available June 2001



Call for more fan specials!



NORTHEAST AGRICULTURAL SYSTEMS, INC
Flyway Business Park
139A West Airport Road
Littitz, PA 17543
Phone (717) 569-2702

Authorized CHORE-TIME master distributor since 1982

Pennsylvania's Leading Poultry Equipment Distributor and Installer
Poultry Production Systems • Egg Production Systems

For information call our free customer service number
(800) 673 2580