

Spring Antique Tractor Pull Results

DELTA (York Co.) — The Mason-Dixon Fair Association sponsored their First Annual Spring Antique Tractor Pull on a sunny but windy day on May 5, 2001. There were 103 pulls.

More than 50 owner-operators brought over 66 tractors of antique vintage (1960 and older) to test the track and the new sled.

All proceeds from the pull benefit the 2001 Mason-Dixon Fair.

The top three finishers in each class are as follows:

2,800 Class (stock): 1. Jim Harnish, Washington Boro on a 1941 Case VC (82'2"). 2. Jason Kerns, White Hall, Md. on a Farmall BN (6' 11")

3,500 Class (stock): 1. William Burkheimer of Aberdeen, Md. on a Massey Harris 30 (132' 5") 2. Curtis McGrady, Rising Sun, Md. on a 1948 Allis Chalmers WC (130' 9") 3. Allen Muller, Hampstead, Md. on a 1943 Allis Chalmers WC (74' 7")

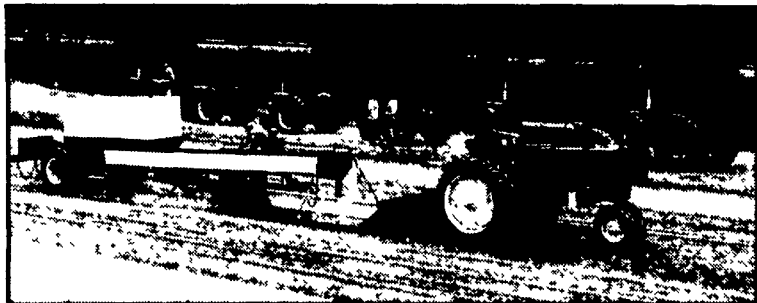
3,500 Class (modified): 1. Curtis McGrady, Rising Sun, Md. on a 1948 Allis Chalmers WC (193' 9")

4,500 Class (stock): 1. Jason Talley, Rising Sun, Md. on an Allis Chalmers WD (205' 2") 2. Richard Zimmerman, Mt. Joy on an Allis Chalmers WD 45 (196' 1") 3. Bill Burkheimer, Aberdeen, Md. on a John Deere A (180' 8")

4,500 Class (modified): 1. Chris Cockey, Millersville, Md. on a Wards ER (233' 4") 2. Jason Talley, Rising Sun, Md. on an Allis Chalmers WD (232' 10") 3. Richard Zimmerman, Mt. Joy on an Allis Chalmers WD 45 (208' 2")

5,500 Class (stock): 1. James Thompson, Forest Hill, Md. on an Allis Chalmers WD 45 (146' 5") 2. Dick Herbert, Jarrettsville, Md. on a Massey Harris 44 (143' 3") 3. Doug Anderson, Glenn Arm, Md. on a Farmall Super M (139' 6")

5,500 Class (modified): 1. Doug Anderson, Glenn Arm, Md. on a Farmall Super M (189' 1") 2. Allen Muller, Hampstead, Md. on a Farmall Super M (146' 7") 2. James Thompson, Forest Hill, Md. on an Allis Chalmers WD 45 (135' 4")



Dale Thompson of Maryland takes his turn pulling the new Mason-Dixon Fair sled. He placed fifth out of a field of 16 in the 6,500-pound stock class.

6,500 Class (stock): 1. John Stauffer, New Holland on a 1955 Deutz D65 (Full Pull of 300') 2. Jason Baer, Glenville on a 1946 Farmall M (230' 11") 3. Marlin Kreider, Washington Boro on a MM (206' 5")

6,500 Class (modified): 1. John Stauffer, New Holland on a 1955 Deutz D65 (Full Pull of 300') 2. Jason Baer, Glenville on his 1946 Farmall M (204' 8")

7,500 Class (stock): 1. Todd Stauffer, New Holland on a 1955 Deutz D65 (200' 11") 2. Robert Rowe, Nottingham on a Farmall Super M (166' 4") 3. J. Glen Hess, Washington Boro on a Cockshutt 50 (158' 6")

7,500 Class (modified): 1. Robert Rowe, Nottingham on a Farmall Super MTA (184' 7") 2. John Stauffer, New Holland on a 1955 Deutz D65 (170' 11") 3. Philip Baer, Glenville on a Farmall M (156' 11")

8,500 Class (stock): 1. John Harnish, Washington Boro on a Case 400 (190' 5") 2. John Stauffer, New Holland on a 1955 Deutz D65 (178' 7") 3. Jeff Douts, Oxford on a John Deere 730 (176' 4")

8,500 Class (modified): 1. J. Glenn Hess, Washington Boro on a Cockshutt 50 (200' 6") 2. Arnold Shackelford, Long Green, Md. on a John Deere 60 (166' 1") 3. Fred Dietz, III, Phoenix, Md. on a John Deere A (149' 5")

9,500 Class (stock): 1. Heather Blevin, Nottingham on a John Deere 730 (205' 1") 2. Jeff Douts, Oxford on a John Deere 730 (204' 2") 3. Gilbert Scarff, White Hall, Md. on a John Deere 720D (144' 3")

9,500 Class (modified): 1. Jeff Douts, Oxford on a John Deere 730 (235' 1") 2. Jim Harnish, Washington Boro on a Case 400 (210' 6") 3. Heather Blevin, Nottingham on a John Deere 730 (189' 4")

10,500 Class (stock): 1. Robert Rowe, Nottingham on a John Deere 820 (139' 8") 2. Clifford Holloway, Peach Bottom on an IH 650D (135' 2") 3. Vic Butler, Whiteford, Md. on an Oliver 1900 (90' 11")

10,500 Class (modified): 1. Robert Rowe, Nottingham on a John Deere 820 (147' 3") 2. John Harnish, Washington Boro on a Case 400 (135' 8") 3. Clifford Holloway, Peach Bottom on a Farmall H 650 (129' 7")

12,500 Class (stock): 1. Jim Huber, Peach Bottom Int'l 560 (182' 7") 2. Joel Harnish, Washington Boro on a Case 600 (141' 8")

12,500 Class (modified): 1. Joel Harnish, Washington Boro on a Case 600 (155' 10") 2. Robert Rowe, Nottingham on a John Deere 820 (142' 10")

Educators Reminded Of Beef Materials

DENVER, Colo. — Through a combined state and national effort, grade school and high school teachers across the United States are being reminded of the many beef industry educational materials available to them.

Checkoff-funded aids that address such topics as nutrition, the environment, consumer sciences and others are featured in a new flyer being distributed by state beef councils and the National Cattlemen's Beef Association (NCBA).

The flyer describes and illustrates more than a dozen teachers' aids prepared by the NCBA on behalf of the Cattlemen's Beef Board and state beef councils. The materials are targeted to specific age groups and professionally written, designed and marketed with teachers in mind.

Some of the materials are provided free to teachers in grades 3-7. All materials are

available to teachers through the beef industry's education web site, www.teachfree.com. Several of the materials have won national awards for their effectiveness in reaching children and getting across the beef industry's message.

Among the materials being promoted in the flyer are Eat Well Grow Strong, an educational poster for second graders; Caretakers All, an environmental program for grades 3-4; Fueled for Flight, an education kit that uses space travel to teach 5-6 grade students about how the body uses energy; Basics About Beef, a colorful 24-page booklet that covers all aspects of beef nutrition, purchasing, storing and preparation; and Facts for Your Files, a series of background sheets on numerous topics important to both consumers and the beef industry.

USDA Appoints Bergold To Head Delaware Farm Service Agency

WASHINGTON, D.C. — The USDA recently named Richard L. Bergold as Delaware State executive director for the Farm Service Agency state office.

Bergold owns and operates Edgewater Farms, a 2,000-acre

family farm near Dover, Del. He raises potatoes, field and sweet corn, soybeans, wheat, and barley. Prior to that, Bergold was vice president of the farm and involved in other farming partnerships.

Bergold has held leadership roles with various organizations, including the Delaware Potato Board, National Potato Council, and Delaware State Farm Bureau. He was also an FSA committee member from 1995-2000.



Participants in the Spring Antique Tractor Pull wait for their turn to pull the sled. Over 60 different tractors were featured at the May 5 event.

NEW PRECAST CONCRETE BARN CLEANER GUTTERS

- X Ideal for new or remodeled tie stall barns
- X Saves time and money, No forming needed
- X Slow cured for extra strength
- X Can be used for creeks diversion ditches, and water ways
- X Sizes:
Inside width: 18" and 20"
Inside height: 18"
Length: up to 12'

Call Us For Your Nearest Dealer!

LEBANON VALLEY ENTERPRISES, INC.
Manufacturing • Powder Coating • Precast
P.O. Box 187, Myerstown, PA 17067 • (717) 866-2030

LANCO CONCRETE WALLS, INC.

• Agricultural • Commercial • Residential

We Do NRCS Approved Work • Quality Workmanship

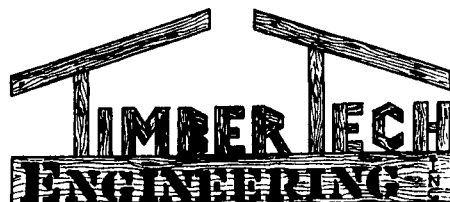
- Retaining Walls
- Manure Pits
- Footers
- Bunker Silos
- Slatted Floor Deep Pits
- Flatwork

LANCO CONCRETE WALLS, INC.

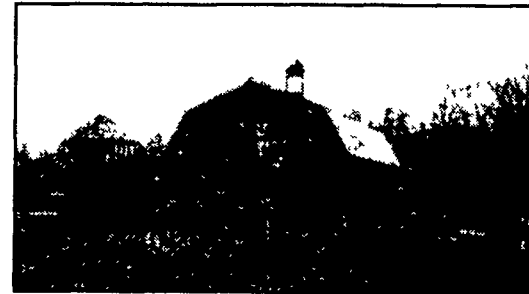
PO BOX 256, Bird-In-Hand, PA 17505

CONTACT Steve Petersheim, Jr (717)291-585 • FAX (717)291-4686

*"Let Us Assist
You In The
Design Of
Your Next
Building
Project."*



BUILDING & FACILITIES PLANNING



Timber Tech Engineering, Inc.

CONSULTANT ENGINEERS
254 W. Franklin Street
Womelsdorf, PA 19567

(610) 589-4589

(610) 589-5384 FAX