

Honeybees Increase Strawberry Yields

Tim Elkner
Lancaster County
Horticulture Agent

A recent column in a horticultural publication reported on research which proved that honeybees present in strawberry fields during flowering resulted in more and larger berries.

Many growers have believed that this was the case, but there had been little research information to document the benefits of bees.

However, Dr. Joseph Kovach conducted a study at Cornell University that found honeybee-pollinated fields yielded 20 percent more strawberries (by weight) than nonpollinated fields.

This funding is significant for several reasons. First, the only cost involved to increase yields was the expense of hive rental. There were no additional fertilizers or pesticides necessary.

Second, the resulting berries were larger and sweeter. This would definitely help sales of your fruit.

And third, the number of misshapen berries in the field was reduced. This was a result of more efficient pollination by the bees.

Strawberries are wind-, and gravity-pollinated and bees or other pollinators are not necessary to set a crop. However, by having bees present to move pollen between flowers, more achenes (or seeds) are formed. Developing seeds release hormones that cause development of the flesh nearby, resulting in larger and better-shaped berries. Developing seeds also stimulate the accumulation of sugars in the fruit so the more seeds there are, the sweeter the berry.

Honeybees find strawberry flowers attractive so large numbers of colonies are not necessary to improve pollination. One strong hive for every two acres of berries should be sufficient to increase your yields.

I encourage you to look into having honeybees present during flowering of your strawberry fields this year. This small investment could yield large returns at harvest.

USDA Launches Online Manual Of Permitted Fruits, Vegetables

WASHINGTON, D.C. — The USDA is establishing a new manual on its Website that lists all of the fruits and vegetables from every country in the world that may be imported into the U.S.

The manual, which includes fresh herbs and sprouts, can also be used to determine what permits are required for importation. Anything that is not included on the list is prohibited from entering the U.S.

This manual will meet the needs of importers from around the world who want to expand their markets to the U.S. but are unsure of what fruits and vegetables are permitted.

The database will also benefit USDA's Animal and Plant Health Inspection Service, which has agricultural inspectors at international ports of entry around the country. APHIS' inspectors can use the online manual, which contains pictorial identification guides, to more quickly determine if cargo and other produce brought to the U.S. by importers and passengers is allowed entry or must be confiscated.

While the manual has been available in hard copy, this is the first time it has been made accessible online.

All of the fruits and vegetables included in the manual are intended for human consumption,

not for propagation. Fruits and vegetables not included on the list are prohibited because of the pest and disease risk associated with the produce or because a risk assessment has not been done to determine if the commodity can be safely imported.

To view the complete list, visit www.aphis.usda.gov/ppq/manuals. The manual will be regularly updated to reflect changes and additions to the list.



Lancaster Poured Walls

- Agriculture
- Commercial • Residential

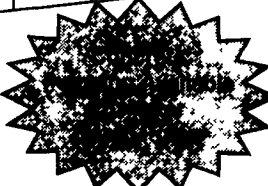
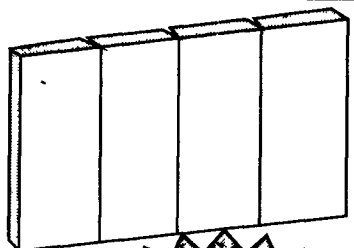
Call for Prices On:

- NRCS approved Manure Storage Pits
- Basements
- Footers
- Retaining Walls
- Foundation Walls

Customer Satisfaction Is Our Goal

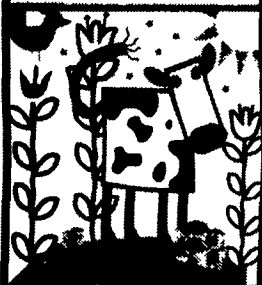
Lancaster Poured Walls, Inc.

2001 Jarvis Rd. • Lancaster, PA 17601 • (717) 299-3974

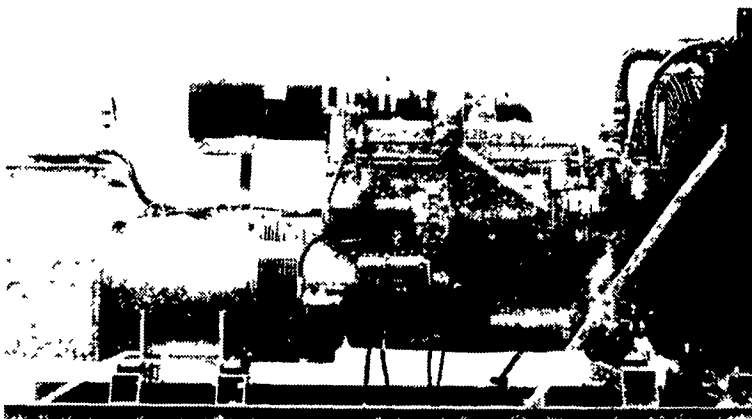


DAIRY ISSUE JUNE 2!

Dairy Issue is scheduled to feature an interview with a young couple new to dairying, a new milk cooperative in the central part of the state, research into building a better milkshake, and lots of news from the dairy promotion frontlines. The issue is June 2. Don't miss out!



GENERATORS



MARTIN ELECTRIC PLANTS • Manufacturer of:
DIESEL, LP GAS, NATURAL GAS, PTO
Automatic & Manual Start Systems

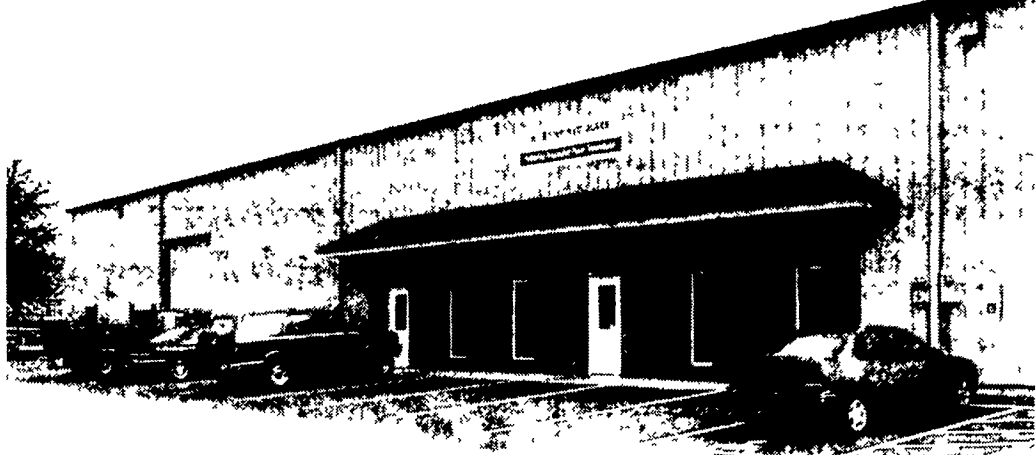
USED UNITS ALSO AVAILABLE

Call Us For All Your Generator Needs!

MARTIN ELECTRIC PLANTS

280 Pleasant Valley Rd., Ephrata, PA 17522-8620
800-713-7968

Tel: 717-733-7968 Fax: 717-733-1981



Our 20,000 Sq. Ft. Facility Enables Us To Serve You Better

Your One-Stop Hydraulic Shop

Beiler Hydraulics is a Full Service Facility Specializing in:

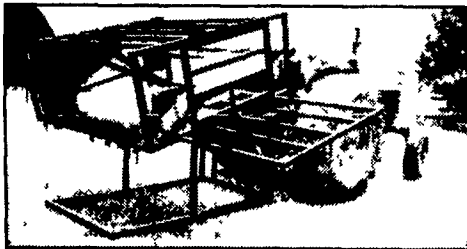
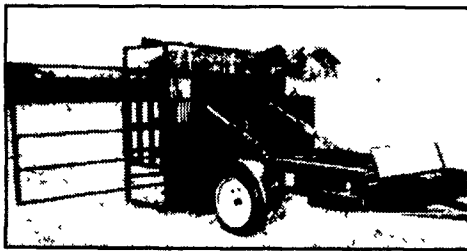
- **Engineering**
All types of hydraulics & pneumatics
- **Air Compressors**
Complete rebuilding of all brands
Road service
Lots of parts in stock
- **Cylinders**
Complete rebuilding
New parts machined
Custom built cylinders
- **Machinery conversions**
Hydraulic & pneumatic
- **Pumps & Motors**
Complete rebuilding of all brands
Lapping & resurfacing
Authorized build center for Permco
- **Fully Equipped Service Truck**
Hydraulic installations
Maintenance
Repair
- **Truck Systems**
Wet line installation
Trouble shooting
- **Hose Assemblies**
Made to order
- **Hydraulic Power Units**
Custom built to your specifications
Gas or electric
Stationary or portable

Beiler Hydraulics
HYDRAULICS • PNEUMATICS • POWER TRANSMISSION
440 Concrete Ave • Leola PA 17540 • 717-656-4878 • Fax 717-656-4682



HEAVY DUTY HOOF TRIMMING TABLES

Endorsed by the International Hoof Trimming School of Wisconsin



- 12-year building experience in the tables design
- 2"x2" tube frame chute
- chute measures 75"x28"x75" high
- 4" casters for cradle fold-up
- 2 10-inch lift belts
- 3500 lb axle with or without brakes
- two hydraulic cylinders for extra stability
- tool box for D.C. pump and battery protection
- manure grate to keep work area clean
- fold away side gate
- removable head board
- 45 min. video from International Hoof Trimming School of Canada

FOUR MODELS TO CHOOSE

1. PORTABLE
2. STATIONARY
3. 3-POINT HITCH
4. SKID STEER MOUNT

BERKELMAN'S WELDING

RR 7, AYLMEER, ONTARIO, CANADA N5H 2R6
(519) 765-4230 1-877-230-9993

Web Page: www.berkelswelding.on.ca