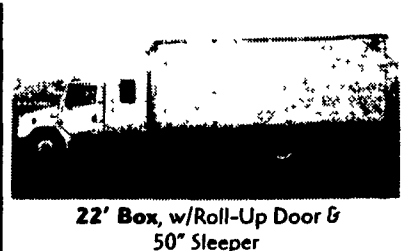
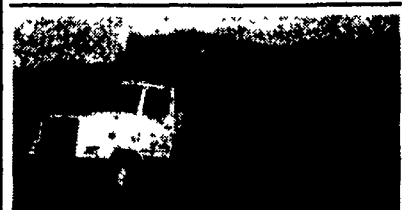


**1993 Ford L8000, 7.8 Diesel, 33,000 GVW, 26' Box w/Hyd. Lift Gate, Good Clean Truck, Motor Needs Work, \$6,900**



**22' Box, w/Roll-Up Door & 50" Sleeper**



**1988 Freightliner, w/24' Dump Bed, 54,000 GVW, New Rubber, \$14,900**



**1990 CF8000 FORD**

26 Ft. Eby Cattle Body, 48 Inch Deck Rail

**540 • 459 • 3905**



**91 Ford E-350 Econoline**  
300ci V6, A/C, roof rack, Nevlen® bin package, Michelin LTX, 7200 GVW

**Stoltzfus Spreaders**  
Morgantown, PA  
**610-286-5146**

Also Available - 18' Mid-West Dump Bed w/Hoist

**(570) 539-8508**



Garbage container hauler for 1 ton truck, ready to install • \$2,500 OBO • 1-800-839-3338



**1987 DM Mack,**

300 Engine, Air, 6 Speed, 18 Front, 44 Rears, Double Frame CA 12'6" **\$10,900**  
**1-800-839-3338**



**1996 Trailase**

Hydraulic Ramp Trailer, Winch, Air Ride 48 Ft., 1993 Peterbilt Tractor, 3306 Cat, Very Good Condition, Will Trade **\$42,500**

**Curry Supply Co., Curryville, PA**  
**814-793-2829**

**DIESEL PERFORMANCE**



- Ford Powerstroke:** 30% More HP!  
100 lbs. More Torque!
- GMC 6.5L Turbo:** 40% More HP!  
60-90 lbs. More Torque!
- Dodge Ram Diesel:** 50-150 More HP!  
100-300 lbs. More Torque!
- High Flow Exhaust & Intake Systems
  - Performance Chips
  - Torque Converters, Throttle Bodies, Auto Lock Kits, Heavy Duty Clutches
  - Exhaust Brakes
  - Performance/High Flow Injectors

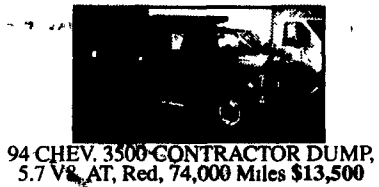
From The Diesel Specialists For Over 45 Years

**Penn Diesel Service Co.**

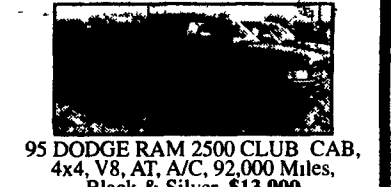
Interstate 81 Exit 27, Harrisburg, PA  
**(800) 535-2913**

**Woodcrest Motors**

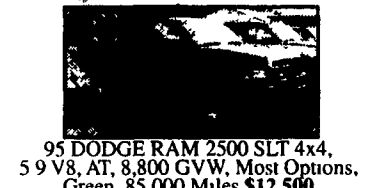
SPECIALIZING IN TRUCKS & VANS  
1200 North Reading Rd., (Rt. 272) Stevens, (Lancaster Co.) PA 17578  
**717-336-3130**



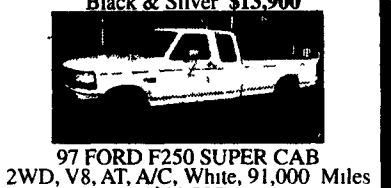
94 CHEV. 3500-CONTRACTOR DUMP, 5.7 V8, AT, Red, 74,000 Miles **\$13,500**



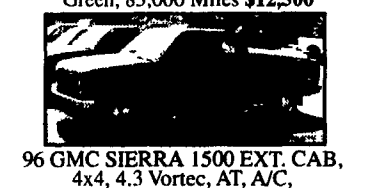
95 DODGE RAM 2500 CLUB CAB, 4x4, V8, AT, A/C, 92,000 Miles, Black & Silver **\$13,900**



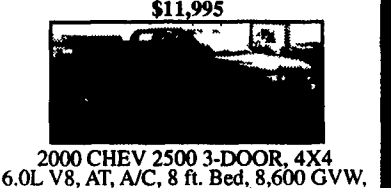
95 DODGE RAM 2500 SLT 4x4, 5.9 V8, AT, 8,800 GVW, Most Options, Green, 85,000 Miles **\$12,500**



97 FORD F250 SUPER CAB 2WD, V8, AT, A/C, White, 91,000 Miles **\$11,995**



96 GMC SIERRA 1500 EXT. CAB, 4x4, 4.3 Vortec, AT, A/C, 74,000 Miles, Maroon **\$13,800**



2000 CHEV 2500 3-DOOR, 4X4 6.0L V8, AT, A/C, 8 ft. Bed, 8,600 GVW, 46,000 Miles, Blue - **\$19,500**

**TRUCK CAPS • BED LINERS COMPLETE SERVICE DEPARTMENT**

**Apple Auto Sales, Inc.**

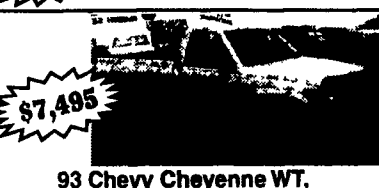
Preowned Cars & Trucks  
Route 30 - Lincoln Highway East, Gap, PA 17527  
717-442-9700 • 717-299-9900 • FAX 717-442-3140  
Email: contactus@appleautosales.com Web www.appleautosales.com



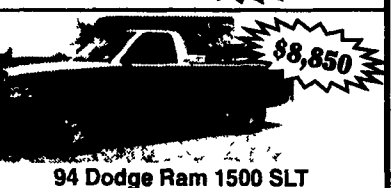
99 Ford F250 Ext. Cab 4WD, 5.4 V8 Triton, 34K, XLT-fully loaded, red **\$23,500**



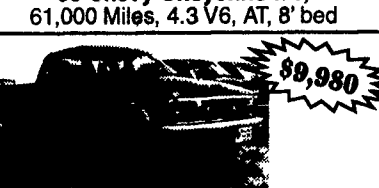
95 GMC 1500 Extended Cab 4WD, 1 Owner. Trade **\$13,525**



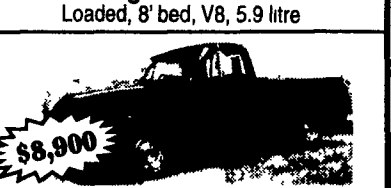
93 Chevy Cheyenne WT, 61,000 Miles, 4.3 V6, AT, 8' bed **\$7,495**



94 Dodge Ram 1500 SLT Loaded, 8' bed, V8, 5.9 litre **\$8,850**



95 Chevy 10, Extended cab LS, 4WD, AT, A/C **\$9,980**



68 Chevy C10, 62,000 Original Miles, Local 2 owner, restored **\$8,900**

**LIFETIME FREE INSPECTIONS • BUY & SELL**

**THE HONDRU EXPERIENCE**

OVER 200 TRUCKS AVAILABLE FROM OUR 4 DEALERSHIPS

**E-TOWN CHEVROLET**

Oldsmobile Pontiac  
Route 230 E-Town • 717-361-7776  
877-924-6644

**2000 Chevy 4x4 Cab & Chassis**



350 V8, Auto, AC, PS, PB

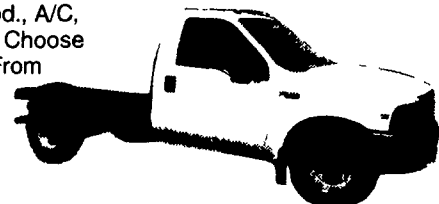
- 00 Dodge Dakota Quad Cab (4 Full Doors), 4x4
- 99 Dodge Ram 1500 4x4 Short Bed, 3,000 Miles
- 98 Chevy Silverado Ext. Cab, 4x4
- 98 Chevy 3500 4x4 Club Cab, Auto, AC, PW&L, 454 Eng.
- 97 Chevy Express 2500 Cargo Van
- 96 Chevy 1500 4x4 Work Truck

**PHILLIPS FORD**

Route 72 Manheim • 717-665-3551  
877-597-3551

**99 Ford F350 Cab & Chassis**

Diesel, 5-Spd., A/C, 2- To Choose From



- 01 Ford F350 Crew Cab XLT, Diesel, 4x4 #IF306
- 02 Ford Explorer 25 to Choose From!
- (2) 99 Ford F250 Super Cab, 4x2, Diesel
- 99 Ford Ranger S C, XLT, 4x4, Flareside, 4-Dr
- 99 Ford F350 Cab & Chassis, Diesel (2 To Choose From) 5 Speed, AC From \$16,995 #IF513A
- 95 Ford F250 Super Cab 4x4, Diesel, XLT #IF528A
- (2) 1990 Bronco 4x4, 1-XLT, 1 Eddie Bauer

**E-TOWN DODGE**

Route 230 E-Town • 717-367-6644  
877-924-6644

**97 Dodge 3500 Dually**



4x4 Laramie SLT, Diesel, 5 Speed

Call Us For Used Diesels

**2000 Dodge Ram 3500**

4x4, Dump, V-8 Magnum, Auto, AC

WAS: **\$32,470**  
NOW: **\$26,400**



All prices Include Rebates, Exclude Tax, Tag and \$55 Dock Fee

**LOADS OF USED PICKUPS**  
**CALL ANY STORE FOR DETAILS**  
Visit us @ [www.hondruauto.com](http://www.hondruauto.com)

OVER 20 CHASSIS IMMEDIATELY AVAILABLE FOR BODY INSTALLATION AT OUR LOCAL BODY COMPANIES!

**MANHEIM CHRYSLER GMC**

Route 72 Manheim • 717-665-2473  
877-603-2473

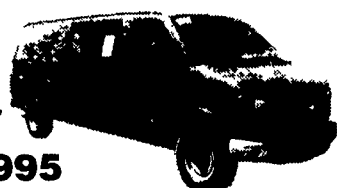


**99 Ford F250**

Ex. Cab, Diesel, 5 Speed, Super Cab **\$18,995**

**97 Chevy 2500**

Max Series Work Van, 35,000 Miles, Great Shape!



**\$16,995**