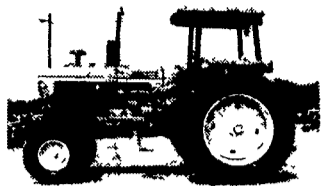


TANEYTOWN FARM EQUIPMENT

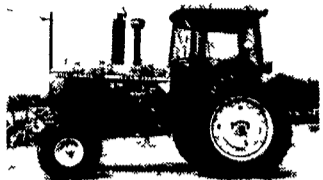
Route 194 and Brown Road 410-751-1500
Bush Hog® King Cutter



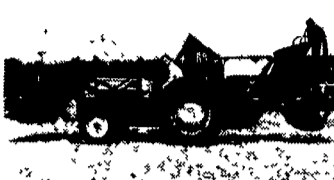
JD 4230, QR, Very Nice, 4,800 Hrs



New Idea 484 Round Baler, Makes 4x5 Bales \$5,900



JD 4440, PS, Nice



FORD 800, TLB, Good Old Backhoe

NEW ARRIVALS

Ford 800 II B	\$4,500
Ford 1715 4x4 500 Hrs	SOLD \$8,900
Woods 750 Backhoe Attach	\$2,900
JD 4230 4 Post 4800 Hrs QR	\$11,900
Int 106 Hydro Very Nice	\$10,900

TRACTORS

Deutz 4506 with Loader One Owner 2300 Hrs	\$7,900
Ford 7710 2500 Hours Fresh Overhaul	\$10,900
Ford 8600 Cab Very Nice	\$7,500
International Hydro 84	SOLD \$3,995
Int 254 4x4 300 Hrs	\$7,900
JD 1010 w/Cultivators Nice	\$7,900
Massey Ferguson 1085	\$8,900
Massey Ferguson 231	\$8,900
MF 651 P Gas Very Nice Great Collector Tractor	\$1,995
Oliver 88 Wide Front Gas	\$1,995
White 6085 4x4 Cab Loader 400 Hrs 1998 Model	\$27,500

EQUIPMENT

Case K23B Rock Flex Disc 23 Ft	\$1,995
JD 420 Riding Mower 800 hrs Nice	\$4,995
JD 318 Riding Mower 3 pt 800 Hrs	\$2,995
(2) Woods 15 Batwing Mower	\$3,750 up
NH I X485 Skidloader 1200 Hrs	\$7,900
Lilliston 7 Shank Chisel Plow	\$795
Mohawk 7 Shank Pull Chisel	\$595
JD 7000 Planter No-Till Dry Fertilizer	\$2,495
John Deere 115 Disc, 12 Foot	\$2,495
John Deere 620 Disc, 10 Foot	\$2,495
International 5100 Drill 24x7 w/Press	\$1,795
John Deere 8300 Drill 26x7 w/Press	\$2,495
John Deere 1209 Haybine Nice	\$2,295
Loader Attach Ford 7412	\$3,995
New Idea 206 Spreader As Clean As You Will Ever Find	\$1,995
New Idea 484 Round Baler Like New	
New Idea 3615 Manure Spreader	

Bush Hog Loaders
20% OFF

Shaver Post Drivers
 HD10 - \$2,150 HD8 - \$1,395
 We Deliver Anywhere

MOWERS - MOWERS - MOWERS
 From 4 to 20 ft. - New & Used Lowest Prices Around!!



USED EQUIPMENT

AC WD w/3 pt
 Kubota L3750 DT w/Loader, 2800 hrs
 Kubota L2850 GST w/Loader, 300 hrs . 34 hp
 Woods RM990 90" Finish Mower
 NH 451 Sickle Bar
 NI 5109 9' Conditioner
 Kuhn FC 350 11 1/2' Finger Disc Conditioner
 Kuhn GMD 700 9' 3 Pt Disc Mower
 Hesston 12-Wheel Wheel Rake. High Capacity

LAWN & GARDEN

JD 277 4 Wheel Steer w/Bagger
 JD 185 Hydro w/Bagger
 JD STX38 5-Spd . 38"
 Kubota F2260 60" 4WD
 Kubota G1900, 4WS, 18 hp. 60"
 Kubota T1600 14 hp Diesel
 Kubota T1400 12 hp 40" w/Bagger
 Scag Zero Turn 22 hp 60", 500 Hrs
 Grasshopper 721D-G2, 61", 980 Hrs.
 Grasshopper 721D-G2, 61", 1380 Hrs

STOLTZFUS FARM SERVICE

Cochranville, PA 610-593-2407

CIH 7140 2WD, 4 New Tires, Duals, 3 Remotes, Weights, 3 Remotes, . 4 speed reverse, serviced & vg cond , 5000 Hrs	\$27,000
1988 Ford TW35 Series II, MFD, axle duals, v nice, 3900 hrs	\$24,800
1986 CIH 3394, MFD, new 20 8x42 tires, radial tires, 24 spd trans , 4 hydraulics, vg cond , 4450 hrs	\$23,900
IH 5088, 4 post, 3800 hrs	\$9,500
IH 986, only 3200 l-owner hrs , 4 post	\$9,700
IH 1086 w/Cab, A-1 cond v nice	\$9,300
1995 CIH 5230 Maxxum, cab, power shift, new 18 4x38 radial tires, v g cond , 4000 hrs	\$30,250
MF 1155 w/cab	\$6,500
JD 2940, 4500 hrs , good rubber, weights, hi-lo	\$11,750
John Blue 500 gal sprayer, 40' booms, foam marker	\$2,600
IH 720 5x18 Spring Reset Plow	\$2,300
IH 710 4x16 Spring Reset Plow	\$1,450
Oliver 360 4x16 mounted plow	\$525
White 445 12 shank HD disc chisel w/curve coulters, vg cond	\$5,200
Wilrich 9-Shank Disc Chisel, v nice	\$3,500
Krause 20' mid-fold disc, good blades, good cond	\$3,800
Great Plains 15' No-till Drill w/grass seed, CPH	\$8,750
25,000 KW Portable PTO Generator	\$1,950

E&M Equipment

Call Merv King
 RR 1 Box 57, East Waterford, PA 17021 (Juniata Co.)
 717-734-3139 NO Sunday Calls

CHARLES S. SNYDER, INC.

RR3, BOX 109
 1 MILE EAST OF RT. 309 ON RT. 443
 TAMAQUA, PA 18252 PHONE: 570-386-5945
 MON. THRU FRI. 8:00 A.M. TO 5:00 P.M.
 FAX 570-386-4080
 SAT. 8:00 AM TO 12:00



NEW HOLLAND



NEW HOLLAND

SHIP PARTS UPS DAILY

WEB SITE- www.cssnyder.com • EMAIL cssnyder@ptd.net

TRACTORS

Tag#	Make	Model	Year	Hours	PTO HP	Description
11314	MF	204	N/A	N/A	N/A	Tractor w/Loader
11301	Case IH	5130A	1990	5646	88	Tractors 4WD w/ROP Canopy
11298	IH	656	1968	4365	63	Gas Tricycle w/Loader
11286	Deutz Fahr	6240	1987	310	43	Diesel 2WD ROPS w/Roof
11281	Deutz Allis	6250	1986	2502	51	4WD w/Loader Soft Cab, 2 Rear Remotes
11266	NH	8670	1996	1861	145	4WD Cab, Super Steer, Powr Shift, Dual
11257	Ford	5000	1969	2785	53	Diesel Tractor
11249	AC	5040	1976	4825	40	2WD Diesel Tractor
Demo	NH	8770	1998	79	165	Super, Steer, Duals, Full Weights, Creeper Gear, Mego Flo, Ready
11188	NH	3930	1996	139	45	4WD Cab, w/Loader Blade
11130	NH	4630	1995	20	55	4WD w/Shuttle Shift
11103	Ford	6610	1984	3942	72	2WD Cab Loader & Tiger Mower
10329	Ford	6600	1976	4203	70	W/Cab 2 Remotes Weights Front & Back
10949	NH	6635	1997	57	76	4WD Cab 24x12 Dual Power w/Loader
10499	Ford	8700	1978	8779	110	2WD Dual Power, 2 Remotes

INDUSTRIAL TRACTORS

Tag#	Make	Model	Year	Hours	Description
11318	Ford	545	1981	N/A	2WD 4 Post ROPS Tractor Loader
11238	Ford	655A	1996	3386	2 Wheel Drive, ROPS, 4 Lever
11203	Dahmar	4WD-8	1999	1752	Rough Terrain Forklift
11088	Ford	555B	1987	2260	TLB 2WD Cab Std Hoe
11179	Ford	555D	1996	1395	TLB 4WD Cab 2 Lever 14' Hoe
11077	Ford	655E	1999	515	TLB 4WD Cab Ext Hoe, 4 Lever
10726	NH	655E	1998	456	4WD Cab Ext. Hoe 2 Lever

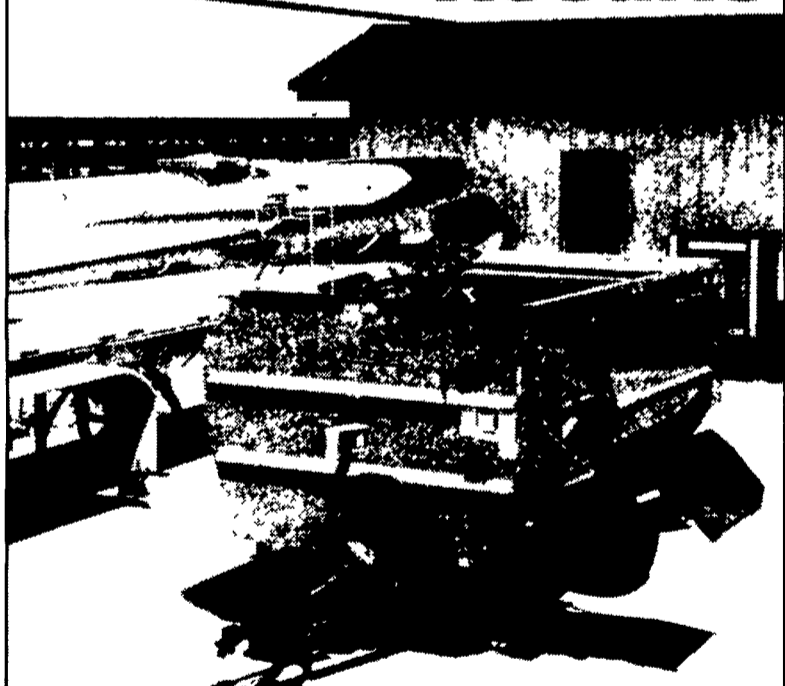
SKID LOADERS

Tag#	Make	Model	Year	Hours	Description
11285	NH	L425	1978	1189	Gas Wisconsin
11253	Gehl	HL360	1980	872	Onan Engine, Gas
11256	Case	1845C	1996	1727	Skid Loader
11246	NH	LX465	1998	1206	Skid Loader
11226	NH	LX665	1997	1441	Skid Loader
11216	NH	L785	1990	3203	Skid Loader
11208	NH	LX565	1997	1413	Skid Loader
11195	NH	L454	1986	4122	Skid Loader
11194	NH	L425	1978	1325	Skid Loader, Gas, Wisconsin Engine
11164	NH	LX665	1994	2297	Skid Loader
11150	NH	LX565	1996	2906	Skid Loader
11120	NH	LX885	1996	645	Skid Loader w/Cab Kit, No Bucket
10846	Clark Forklift	Y40	N/A	2116	Propane 48" Forks
10800	Thomas	103	1989	420	Kubota Engine 60" Bucket & Pallet Forks
10554	Commander	C8000	N/A	1114	Rubber Track Crawler
10485	NH	L785	1985	7641	Perkins Engine w/Weights

BALER

Tag#	Make	Model	Year	Description	Model Thresher
11288	NH	320	1976	Baler	58
11225	NH	575	1997	Hydro Baler	72
11198	NH	575	1992	Baler w/Hydra 1/4 Turn Chute	N/A
10519	NH	320	1983	Baler	70
10406	NH	283	1975	Baler	62
10000	NH	320	1980	Hydro Formatic Baler	72

Reel Auggie = Results



The Reel Auggie Design provides a fluffy, more palatable ration that promotes feed consumption. When your cows consume more high quality feed, they'll produce more milk.

MORE MILK IN THE TANK, THAT'S THE BOTTOM LINE!

To see results, ask for a Reel demonstration from your local Knight dealer today.

3000 SERIES REEL AUGGIE MIXER TRUCK, TRAILER and STATIONARY MIXERS FROM 105 - 700 CU. FT. MIXING CAPACITIES



Brodhead, WI • 608-897-2131
 Greeley, CO • 970-351-0444

World-Wide Leader in TMR Mixers! www.knightmfg.com

USED EQUIPMENT

- Knight 3042 420 cu. ft., Demo Unit
- VD Lagoon Pump, Demo
- 3 Pt. Lagoon Pump, Rent or Sale
- VD Slinger Spreader, 3300 gal. tank
- Wic Bedding Chopper, 3 hp electric, like new
- 25KW PTO Portable Generator

New Knight Vertical Mixer Available - Call

Demo Unit Mixer In Stock Call For A FREE Demonstration

MILLCREEK FENCE & FARM SYSTEMS

2285 Old Philadelphia Pike, Lancaster, PA 17602 - (717) 396-8987