



MAY 14-20, 2001

ST. DUNSTAN, MAY 19

### SPRING'S STICKY VISITOR

We're talking about the slug, of course—that mass of not-so-sluggish destruction in the garden. Handpicking may be the most effective means of eliminating this slugabed in your borders, if your garden is small and you are brave (Rubber gloves and an iron stomach help.) Otherwise, decoys such as comfrey plants may attract the slimy pests, keeping them away from your prized cabbages. Shallow pans of beer are often recommended, which become irresistible drowning pools. Barriers of sharp eggshells, grit, or ash may work, and many people claim that slugs won't cross a strip of copper sheeting. Early mornings or cool, moist spring days are a slug's delight. Toads, ducks, and certain wild birds are their natural predators.



All gardens are a form of autobiography.

—Robert Dash

### TIP OF THE WEEK

☞ Rub on oil of cloves or camphor to discourage biting insects.

### SALMON WITH WATERCRESS SAUCE

- 1 tablespoon olive oil
- 1 pound fresh salmon fillet, quartered
- 3 large eggs
- 1 bunch watercress, chopped
- juice of 2 lemons
- 1/2 teaspoon kosher or sea salt
- 1/4 teaspoon freshly ground pepper

cook eggs in boiling water for 5 minutes, then plunge into cold water and peel. Blend soft-boiled egg with watercress, lemon juice, and seasonings, and refrigerate until ready to serve. When salmon is done, serve hot with egg dressing poured over the top.

Makes 4 servings



For recipes, gardening tips, and weather forecasts, visit [www.almanac.com/go/uf5](http://www.almanac.com/go/uf5)

### United Feature Syndicate

(Printed in the U S A)

200 Madison Ave  
NY, NY 10016  
(212-293-8500)

### Eighty-Four Livestock Auction

Eighty-Four, Pa.  
Monday, May 7, 2001

Report Supplied By USDA

CATTLE 236 (PDA) Compared with last week's sale sl. cows steady to 1.50 higher. Bulls steady. STEERS: Choice 35-65 50-68.00. HEIFERS: Standard 1-2 51.00-61.00. COWS: Breakers 75-80% lean 45.00-49.00, Boners 80-85% lean 40.00-45.50, Lean 85-90% lean 35.50-42.50. Shells 35.00 and down. BULLS: Yield Grade 1 1155-2200 lbs 58.00-63.50, Yield Grade 2 1240-2150 lbs 49.00-58.00. FEEDER CATTLE STEERS: few Medium and Large 1 300-400 lbs 91.00-108.00, Medium and Large 2 310-500 lbs 75.00-87.50, 550-870 lbs 70.00-87.50, HEIFERS: few Medium and Large 1 315-615 lbs 80.50-86.00, Medium and Large 2 300-500 lbs 62.00-80.00, 550-850 lbs 54.00-69.00, BULLS: Medium and Large 1 350-500 lbs 88.00-97.50, 535-795 lbs 82.00-87.00, Medium and Large 2 300-500 lbs 65.00-87.00, 520-815 lbs 60.00-80.00. CALVES 184..(All calves sold per cwt) VEALERS: Choice 130-160 lbs

100.00-130.00, Good 160-295 lbs 87.50-90.00 Standard and Good 90-100 lbs 50.00-85.00, 65-85 lbs 40.00-75.00, Utility 50-80 lbs 20.00-40.00. FARM CALVES: Holstein bulls steady No 1 Holstein bulls 90-135 lbs 140.00-195.00, 80-85 lbs 140.00-165.00, No 2 75-130 lbs 100.00-147.50, No 1 Holstein heifers 90-120 lbs 360.00-410.00, one No 2 100 lbs 230.00. Beef type bulls and heifers 65-125 lbs 110.00-190.00, 195-295 lbs 75.00-125.00. HOGS 38 BARROWS AND GILTS 45-50% lean 280-270 lbs 45.50-47.50, 40-45% lean 190-295 lbs 42.00-45.00. SOWS 1-3 345-540 lbs 34.50-39.50, one Medium 395 lbs 29.00. BOARS one 570 lbs 12.00. FEEDER PIGS 0..NO MARKET FEST' SHEEP 108...Slaughter lambs steady to 1.00 lower. SLAUGHTER LAMBS: Choice 35-50 lbs 110.00-122.50, 55-75 lbs 108.00-126.00, 80-100 lbs 109.00-117.00, Good and Choice 65-90 lbs 80.00-90.00. SLAUGHTER SHEEP: 16.00-40.00. GOATS 27. (All sold by the head). One Large Billy 70.00, Medium 42.00-54.00, Large Nannies and Wethers 55.00-81.00, Medium 27.00-44.00, Large Kids 26.00-33.00, Small 15.00-22.00.

### Greencastle Livestock

Greencastle, Pa.  
Report Supplied By USDA  
Tues., May 8, 2001

MONDAY CATTLE 329, CALVES 423, HOGS 56, SHEEP 53, GOATS 59. LAST MON. CATTLE 474, CALVES 427, HOGS 60, SHEEP 32, GOATS 74. CATTLE: Compared with last Monday's auction, slaughter steers and heifers sold steady to 1.00 higher. Slaughter cows were 2.00-3.00 higher. Slaughter bulls traded 1.00 higher. SLAUGHTER STEERS: High Choice and Prime 2-4 1320-1390 lbs 79.75-81.00; 1500- 1560 lbs 74.00-78.00. Choice 2-3 1075-1460 lbs 74.25-80.50. Select 1-3 69.50- 75.75. Standard 1-2 few 60.50-63.75.

HOLSTEIN STEERS. High Choice 2 individual 1400 lbs 73.00. Choice 2-3 1190- 1500 lbs 65.25-67.75. Select 1-2 few 58.50-63.75. Standard 1-2 few 51.50-52.00.

SLAUGHTER HEIFERS: High Choice and Prime 2-4 few 1160-1250 lbs 79.50-83.50. Choice 2-3 1000-1330 lbs 76.5-80.75. Standard 1-2 few 56.00-62.00.

SLAUGHTER COWS: Breakers 75-80 percent lean 45.75-52.00, mostly 47.25-51.00, individual up to 54.75. Boners 80-85 percent lean 43.50-50.75, mostly 45.00- 49.50. Lean 85-90 percent lean 37.00-47.0, mostly 39.75-45.75, few up to 49.75.

SLAUGHTER BULLS: Yield grade 1 1490-2000 lbs 58.50-65.00. Yield Grade 2 1100-2355 lbs 50.25-58.75.

FEEDER STEERS: Medium and Large 1 300-450 lbs 95.00-108.00; 520-700 lbs 82.00-89.00 Medium and Large 2 few 450-500 lbs 98.00, 500-680 lbs 68.50-79.00 Large 3 individual 415 lbs 80.00

FEEDER HEIFERS: Medium and Large 1 200-380 lbs 100.00-117.50, 525-555 lbs 87.00-95.00, 640-710 lbs 80.00-84.50. Medium and Large 2 535-590 lbs 70.00- 86.00 Large 3 individual 310 lbs 87.00

FEEDER BULLS: Medium and Large 1 few 560-575 lbs 85.00. Medium and Large 2 few 475-545 lbs 58.00-75.00. Large 3 Holsteins couple 395 lbs 89.00.

CALVES: Compared to last week's auction' Holstein bulls returning to the farm sold 10.00-20.00 lower, while Holstein heifers were steady.

VEALERS Standard and Good few 70-110 lbs 50.00-60.00 Utility 50-80 lbs 11.00-45.00

RETURNED TO FARM: Holstein bulls Number 1 80-120 lbs 155.00-192.50, mostly 160.00-185.00. Number 2 70-125 lbs 95.00-160.00 Holstein heifers Number 1 85-120 lbs 365.00-470.00 Number 2 75-95 lbs 160.00-330.00. Beef type bulls and heifers 80-120 lbs 120.00-170.00

BARROWS AND GILTS PERCENT LEAN WEIGHT PRICE 45-50 220-285 lbs 44.00-47.00 40-45 Few 325 lbs 39.50

SOWS Prices were steady with last Monday US 1-3 310-490 lbs 33.00-40.00 520-630 lbs 36.00-41.50 Medium 235-445 lbs 26.00-30.00

BOARS: Couple 220 lbs 34.50  
SHEEP: Slaughter lambs sold steady to 5.00 higher than last week's auction. SLAUGHTER LAMBS: Choice 35-65 lbs 125.00-146.00, 70-80 lbs 113.00-119.00. Good and Choice 45-75 lbs 87.50-97.50. SLAUGHTER SHEEP: Utility 1-3 21.00-36.00, mostly 32.00-36.00. GOATS: All sold per head. Billies. Large 91.00-120.00. Medium 66.00-82.50 Nannies: Large 62.00-80.00 Medium 42.50-65.00. Kids: Large 31.00-57.00. Small 15.00-57.50.

### Pa. Weekly

13 Livestock Auctions  
Friday, May 4

Report Supplied By PDA

CATTLE 4553...Compared with 4684 head last week and 4929 head a year ago. Compared with last Friday's summary..sl. steers mostly .50 to 1.00 higher, sl. heifers steady to 1.00 lower, sl. cows uneven, Breakers and Boners 1.00 to 2.00 lower, Lean steady to 1.00 higher, bulls steady to 1.00 higher.

STEERS: High Choice and Prime 2-4 79.00-82.75, Choice 1-3 74.75-80.50, Select and Low Choice 2-3 73.00-77.50, Select 1-3 69.00-77.00, Standard 1-2 57.00-66.50.

HOLSTEIN STEERS High Choice and Prime 2-3 67.75-73.75, Choice 2-3 64.00-71.25, Select 1-2 57.00-64.75, Standard 1-2 47.00-55.00.

HEIFERS Choice few Prime 2-4 71.00-79.25, Select 1-3 64.00-73.50, Standard 1-2 54.50-66.50.

COWS: Breakers 75-80% lean 44.00-52.50, Boners 80-85% lean 40.00-48.50, Lean 85-90% lean 36.00-46.75. Shells 35.00 and down.

BULLOCKS Select 1-3 61.25-70.00  
BULLS: Yield Grade 1 1900-2500 lbs 56.00-65.00, few 68.50, Yield Grade 2 900-2400 lbs 50.00-59.00.

FEEDER CATTLE: STEERS. Medium and Large 1 300-500 lbs 80.00-109.00, 500-700 lbs 73.00-81.50, Medium and Large 2 300-500 lbs 64.00-106.00, 500-700 lbs 65.00-97.50, few Large 3 500-700 lbs 51.00-75.00, HEIFERS: Medium and Large 1 300-500 lbs 79.00-114.00, 500-700 lbs 70.00-85.00, Medium and Large 2 300-500 lbs 60.00-91.00, 500-700 lbs 56.00-84.00; BULLS: Medium and Large 1 300-500 lbs 80.00-115.00, 500-700 lbs 78.50-91.00, Medium and Large 2 300-500 lbs 62.00-105.00, 500-700 lbs 61.00-84.00, few Large 3 300-500 lbs 52.00-76.00.

CALVES 3351...Compared with 2946 head last week and 2649 head a year ago Vealers mostly steady...VEALERS: few Choice 165-280 lbs 90.00-112.50, Good 205-450 lbs 80.00-95.00, Standard and Good 55-130 lbs 40.00-80.00, Utility 45-120 lbs 10.00-45.00; FARM CALVES: Holstein bull calves steady with late week sales down to 15.00, Holstein heifers active mostly 10.00 to 15.00 higher, No 1 Holstein bulls 90-120 lbs 135.00-200.00, few to 225.00, No 2 80-120 lbs 80.00-190.00; No 1 Holstein heifers 80-120 lbs 300.00-465.00, few to 495.00, No

2 65-120 lbs 100.00-405.00.  
Beef type bulls and heifers 65-140 lbs 100.00-215.00.

HOGS 1550...Compared with 1724 head last week and 1776 head a year ago. Barrows and gilts .50 to 1.00 higher, sows mostly 1.00 to 1.50 higher.

BARROWS AND GILTS: 49-54% lean 220-270 lbs 47.00-49.75, 45-50% lean 220-275 lbs 45.00-47.50, 40-45% lean 240-300 lbs 40.00-46.00. SOWS: US 1-3 300-500 lbs 38.00-41.00, 500-700 lbs 40.00-43.00. BOARS: 13.00-35.00.

FEEDER PIGS 80...Compared with 222 head last week and 345 head a year ago. US 1-3 25-50 lbs 22.00-55.00, 55-65 lbs 52.50-77.00 per head

SHEEP 1418...Compared with 1345 head last week and 1709 head a year ago Slaughter lambs 10.00 to 20.00 lower

SLAUGHTER LAMBS: Choice 25-45 lbs 110.00-150.00, 40-80 lbs 90.00-130.00, 80-110 lbs 82.00-110.00, Good and Choice 25-70 lbs 70.00-112.00.

SLAUGHTER SHEEP: 17.50-47.00.

TWO GRADED FEEDER PIG SALES 824...Compared with 265 last week 354 head a year ago...Feeder pigs 10.00 to 15.00 higher...US No 1-2 25-40 lbs 130.00-147.00, 47-49 lbs 100.00-115.00, 50-59 lbs 90.00-109.00, 60-69 lbs 45.00-95.00; US 2-3 25-30 lbs 72.00; Slaughter 20-35 lbs 142.00-180.00 per cwt.

### Friend's Stockyard, Inc.

Accident, Md.

Report Supplied by Auction  
Monday, May 7, 2001

STOCK STEERS AND BULLS 200-500 LBS 50.00-108.00.

STOCK HEIFERS 200-500 LBS 65.00-93.00

SLAUGHTER STEERS GOOD TO CHOICE 75.00-80.10, MEDIUM TO GOOD 68.00-74.00, HEAVY CHOICE OVER 1450 LBS. 68.00-80.00.

HOLSTEIN STEERS HEAVY CHOICE 61.00-66.50, LIGHT 58.00-72.00.

SLAUGHTER HEIFERS GOOD TO CHOICE 75.00-79.75, MEDIUM TO GOOD 55.00-74.50.

BULLS HEAVY 57.00-64.00, LIGHT 55.00-66.00

COWS UTILITY (HOLSTEINS) 42.50-47.75, COMMERCIAL TO GOOD 38.00-42.00, CULL COWS 37.00 AND DOWN.

VEALS GOOD TO CHOICE 50.00-112.00, MED. TO GOOD 50.00-67.00.

BOB CALVES 50.00 AND DOWN.

HOLSTEIN BULL CALVES RETURN TO FARM 90-120 LBS UP TO 184.00; HOLSTEIN HEIFER CALVES RETURN TO FARM 90-120 LBS. UP TO 413.00; BEEF CROSS CALVES RETURN TO FARM UP TO 160.00.

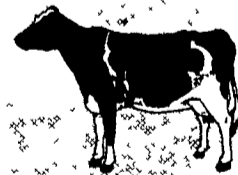
HOGS, TOP QUALITY, UP TO 45.75.

SOWS UP TO 38.00.

LAMBS, CHOICE, UP TO 82.00  
LIVESTOCK PRICES ARE ALL GIVEN PER HUNDRED WEIGHTS.

## WHITE OAK MILLS INC.

Personalized Feeding Programs & Services to Meet Dairy Producers' Individual Needs



- Quality products & services
- Computerized ration formulation & balancing
- Locked-in (not least-costed) feed formulations & forward contracting
- Full line of quality bulk and bagged dairy, beef, horse, swine, poultry & specialty products in addition to commodities
- Professionally qualified dairy specialists & service representatives
- Manufacturer of custom feeds formulated by you or your independent nutritional consultant
- Grain exchange and feed bin programs
- Excellent bulk, cash & early-order discounts
- Shared-cost forage testing / analysis
- Regular bag delivery routes + PA & MD dealers
- Feed pre-payment program
- Flexibility & personalized service to dairy producers
- Computerized, state-of-the-art feed mill with pelleting capability
- Excellent sales terms & toll-free phone: 800 468.5524
- Hours -- Elizabethtown, PA, Headquarters & Store (7 AM to 5 PM weekdays) -- Pinola Store, Shippensburg, PA (7:30 AM - 4 30 PM weekdays; Sat. 8 AM to 12 PM)



## Marketing to Demand:

Meeting the Needs of Today's Increasingly Aware Consumers

A one-day Learning Capsule™ on Saturday, June 16 8:30 a.m.-5 p.m.

### Featured Presentations Include:

- Organic Markets in Transition, Carolyn Dimitri, Economic Research Svcs. USDA
- Integrating E-commerce in Your Business, Rob Ferber, Philly Chile Co. Farm owner
- Farm to City, Joseph Griffin, President, The Oley Institute
- Legal Issues in Marketing, Neil D. Hamilton, Director of Ag. Law Center, Drake Univ.

... and many more.

The RODALE INSTITUTE



611 Siegfriedale Road, Kutztown, PA 19530 • 610-683-1400

WHITE OAK MILLS ... Committed to PA & MD Dairy Producers!