

Livestock Cooperative Auction Market of North Jersey Poultry & Egg
 Hackettstown, N.J.
 Report Supplied by Auction
 Tuesday, May 8, 2001
 HEAVY FOWL 4.00 EA., .35-1.30 LB.
 MIXED FOWL .75-5.00 EA., 1.55 LB.
 PULLETS 8.00-8.50 EA.
 GEESE 5.50-6.50 EA., .65 LB.
 BANTAMS 4.00 EA.
 ROOSTERS 4.00-4.50 EA., .80-1.50 LB.
 BUNNIES 3.00-3.25 EA.
 DUCKS 5.00-8.00 EA., .80-1.55 LB.
 RABBITS 3.00-4.00 EA., 1.00-1.65 LB.
 PIGEONS 3.00-7.50 EA.
 GUINEAS 8.00-13.00 EA.
 GRADE A EGGS WHITE JUMBO EX. LRGE. .59-.62, LARGE .51-.59; BROWN EGGS JUMBO, EX LRGE 75-.79, LARGE .71-.72

New York Eggs
 ATLANTA, GA.
 May 9, 2001

Report Supplied By USDA
 Prices were unchanged. The market tone was generally steady. Demand was light to moderate, slightly better into limited feature activity. Extra large eggs were advertised for 99 cents per dozen, no restrictions. Supplies were adequate to available for trade requirements.
 PRICES TO RETAILERS, SALES TO VOLUME BUYERS, USDA GRADE A AND GRADE A, WHITE EGGS IN CARTONS, DELIVERED STORE DOOR, CENTS PER DOZEN RANGE EXTRA LARGE 54-56, LARGE 51-54, MEDIUM 49-52

North Atlantic Shell Egg Market
 Atlanta, GA
 May 9, 2001

Report Supplied By USDA
 Prices continued unchanged on all weights in all areas. The trade sentiment was generally steady. Demand was light to moderate and was slightly better where features were a factor. Supplies were adequate to fully adequate, instances ample for trade requirements. Breaking stock offerings were fully adequate to ample for the light demand. Light type hens were ample for current processing needs.

New York Eggs
 ATLANTA, GA.
 May 9, 2001

Report Supplied By USDA
 Prices were unchanged. the market tone was generally steady. Demand was light to moderate, slightly better into limited feature activity. Extra large eggs were advertised for 99 cents per dozen, no restrictions. supplies were adequate to available for trade requirements.
 PRICES TO RETAILERS, SALES TO VOLUME BUYERS, USDA GRADE A AND GRADE A, WHITE EGGS IN CARTONS, DELIVERED STORE DOOR, CENTS PER DOZEN. RANGE: EXTRA LARGE .54-.56, LARGE .51-.54, MEDIUM .49-.52

Dewart Hay
 Dewart, Pa.

Report Supplied By Auction
 Monday, May 7, 2001
 HAY: 27 LOTS, 20.00-87.50.
 STRAW: 3 LOTS, 60.00-90.00.
 OATS: 2.05-2.40 BU.

Pa. Grain

May 7, 2001
 Report Supplied By PDA
 COMPARED WITH LAST MONDAY'S MARKET FOR EASTERN AND CENTRAL PENNSYLVANIA: CORN STEADY TO .04 HIGHER, WHEAT AND BARLEY MOSTLY STEADY, OATS STEADY TO FIRM, SOYBEANS .05 TO .08 HIGHER, EAR CORN MOSTLY 1.00 TO 2.00 HIGHER PER TON. PRICES PAID DELIVERED TO DEALERS DOCK, ALL PRICES PER BUSHEL, EXCEPT EAR CORN PER TON.
 SOUTHEASTERN PENNSYLVANIA
 CORN NO. 2-Y RANGE 2.12-2.45, AVERAGE 2.29, CONTRACT FOR HARVEST 2.26-2.39; WHEAT NO. 2 RANGE 2.45-2.66, AVERAGE 2.58, CONTRACT FOR HARVEST 2.49-2.61, BARLEY NO. 3 RANGE 1.50-1.80, AVERAGE 1.67, CONTRACT FOR HARVEST 1.35; OATS NO. 2 RANGE 1.35-1.65, AVERAGE 1.55, SOYBEANS RANGE 3.92-4.20; AVERAGE 4.23, CONTRACT FOR HARVEST 4.10-4.18; FEW REPORTED GR. SORGHUM RANGE 1.98, AVERAGE 1.98, EAR CORN RANGE 57.00-70.00, AVERAGE 62.62.
 SOUTH CENTRAL PENNSYLVANIA
 CORN NO. 2-Y RANGE 2.00-2.25, AVERAGE 2.10; WHEAT NO. 2 RANGE 2.10-2.40, AVERAGE 2.20; BARLEY NO. 3 RANGE 1.20-1.40, AVERAGE 1.36; OATS NO. 2 RANGE 1.05-1.35, AVERAGE 1.25; SOYBEANS NO. 1 RANGE 3.80-4.04, AVERAGE

3.91; EAR CORN RANGE 50.00-60.00, AVERAGE 56.57.
 EASTERN AND CENTRAL PENNSYLVANIA SUMMARY
 CORN NO. 2-Y RANGE 2.00-2.45, AVERAGE 2.24; WHEAT NO. 2 RANGE 2.10-2.66, AVERAGE 2.38; BARLEY NO. 3 RANGE 1.50-1.80, AVERAGE 1.55; OATS NO. 2 RANGE 1.35-1.70, AVERAGE 1.45; SOYBEANS NO. 1 3.90-4.30, AVERAGE 4.05; EAR CORN RANGE 57.00-64.00, AVERAGE 60.30.
 WESTERN PENNSYLVANIA
 CORN NO. 2 RANGE 2.18-2.35, AVERAGE 2.26; WHEAT NO. 2 RANGE 2.25-2.37, AVERAGE 2.31; BARLEY NO. 3 RANGE 1.54, AVERAGE 1.54; OATS NO. 2 RANGE 1.20-1.55, AVERAGE 1.37; EAR CORN RANGE 50.00-75.00, AVERAGE 62.50.
 CENTRAL PENNSYLVANIA
 CORN NO. 2-Y RANGE 2.20-2.35, AVERAGE 2.22; WHEAT NO. 2 RANGE 2.00-2.40, AVERAGE 2.13; BARLEY NO. 3 RANGE 1.50-1.55, AVERAGE 1.51; OATS NO. 2 RANGE 1.40-1.65, AVERAGE 1.48; SOYBEANS RANGE 4.00-4.15, FEW REPORTED 4.30, AVERAGE 4.08; EAR CORN RANGE 60.00-60.00.
 LEHIGH VALLEY AREA
 CORN NO. 2-Y RANGE 2.15-2.30, AVERAGE 2.22; WHEAT NO. 2 RANGE 2.60-2.64, AVERAGE 2.62; BARLEY NO. 3 RANGE 1.50, AVERAGE 1.50; OATS NO. 2 RANGE 1.44-1.75, AVERAGE 1.52; SOYBEANS NO. 1 RANGE 4.00-4.05, AVERAGE 4.01; PER HUNDREDWEIGHT; FEW REPORTED GR SORGHUM RANGE

2.25-2.30, AVERAGE 2.27; EAR CORN RANGE 60.00-64.00, AVERAGE 62.33.
 MONTH AGO
 CORN NO. 2-Y 2.23; WHEAT NO. 2 2.37; BARLEY NO. 3 1.55; OATS NO. 2 1.43; SOYBEANS NO. 1 4.13; EAR CORN 59.90.
 YEAR AGO
 CORN NO. 2-Y 2.52; WHEAT NO. 2 2.26; BARLEY NO. 3 1.82; OATS NO. 2 1.62; SOYBEANS NO. 1 4.94; EAR CORN 76.75.
 NORTH CENTRAL OHIO
 (Prices FOB Truck)
 CORN 1.85-1.90; WHEAT 2.18-2.37; OATS 1.25-1.50; SOYBEAN MEAL: BULK 44% 160.40-166.50; BULK 48% 170.40-175.50.

Middleburg Hay
 Middleburg, Pa.

Report Supplied by Auction
 Tuesday, May 8, 2001
 HAY: 27 LOTS, TOTAL 37.
 ALFALFA: 4 LOTS, 40.00-147.50.
 MIXED HAY: 14 LOTS, 30.00-125.00.
 TIMOTHY: 5 LOTS, 25.00-92.50
 ROUND BALES: 10.00-16.00.
 ORCHARDGRASS: 85.00.
 STRAW: 3 LOTS, 70.00-132.50.
 SQUARE BALE 1.00.
 EAR CORN: 3 LOTS, 70.00-82.50.
 OATS: 3 LOTS, 1.75-2.00.



Diffenbach Auction Inc.

100 West Jackson Street • New Holland, Pennsylvania 17557
 Office: (717) 355-7253 • FAX: (717) 355-9547
HAY & GRAIN SALE EVERY MONDAY - 10:00 A.M.

TUES	MAY 22	QUILT CRAFT & BUGGY	9 00 AM
WED	MAY 23	QUILT & CRAFT	9 00 AM
WED	JUNE 6	WINROSS HESS, FARM TRAC & TOYS	6 30 PM
FRI	JUNE 8	TRACTORS, FARM EQ & SUPPLIES	9 00 AM

EQUIPPED FOR AN AUCTION AT YOUR PLACE OR OURS
 ALAN DIFFENBACH AUCT. -AU2258-L

LEESPORT FARMERS MARKET
 LEESPORT, BERKS COUNTY, PA 19533 (610) 926-1307
LIVESTOCK AUCTION
 EVERY WEDNESDAY - 1:00 P.M.

Farmers Market 9:00 AM to 8:00 PM
 Flea Market 7:00 AM to ??
 visit our website: www.leesportmarket.com

HAY, STRAW & GRAIN SALES

Hay And Straw Sales Will Start At 10 A.M. Every Wed.

WOLGEMUTH'S AUCTION
 formerly Good's Auction
 109 North Maple Ave.
 Leola, PA 17540
717-656-2947

NEW HOLLAND SALES STABLES INC. THE ACTION AUCTION

Livestock Is Our Only Business

<p>MONDAY</p> <p>SLAUGHTER HOGS EARLY BIRD HOG SALE 7:30 A.M. Sell Your Hogs At New Holland Sales Stables Inc See them weighed sold and pickup your check</p> <p>10:00 A.M. HORSES MULES</p> <p>9:00 A.M. SHEEP, GOATS & CALVES</p> <p>1:30 P.M. BEEF SALE</p>	<p>THURSDAY</p> <p>BEEF AUCTION 9:30 A.M.</p> <p>BULLS, STEERS, BEEF COWS</p> <p>1:00 P.M. STOCKERS & FEEDERS</p> <p>10:00 A.M. GOATS, SHEEP CALVES</p>
<p>WEDNESDAY</p> <p>HEIFER SALE 10:00 A.M. COW SALE 12:00 NOON</p> <p>HEIFERS BULLS DAIRY COWS</p> <p>We have the usual run of 125 to 200 Heifers, all ages Loads of fresh cows and springers from our regular shippers Also some local fresh cows and springers</p>	<p>1:30 P.M. FEEDER PIG SALE</p> <p></p> <p>Pigs are accepted after 6 30 A M State graded from 8 to 12 Dairy Barn and Feeder Pig Barn are cleaned and disinfected weekly for your protection</p>

NEW HOLLAND SALES STABLES, INC.
 12 Miles East of Lancaster Off Route 23, New Holland, Penna.

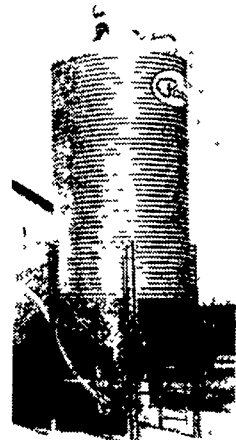
MANAGER
 David Kolb
 Sale Barn Office Manager:
 Michael J. McDermott - 717-354-4341
 FAX #717-355-0706
 Order Buyer:
 Paul Good - 215-445-6662

Field Representatives For Beef and Feeders:
 Luke Eberly - 610-267-6608, 717-738-1865
 Homer Eberly - 610-267-3047
 Nevin Martin - 717-354-7186
 Ron Ranck - 717-656-9849

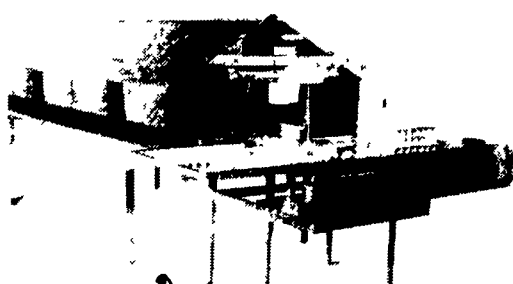
Field Representatives For Goats, Sheep & Calves:
 Ken Smoker - 610-593-2123



The Pax QUICK-START™ pan feeding system grows chicks into FINISHED broilers efficiently.



Feed Storage and Delivery Systems



JANSEN Poultry Equipment
 The Ultimate Nest For Commercial Floor Birds

Farmer Automatic
 OF AMERICA, INC.



2187 North Penryn Rd., Manheim, PA 17545
 Phone (717) 665-4056 Fax (717) 665-2240