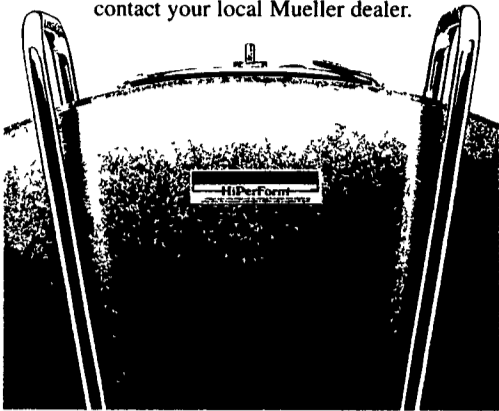


**6 DAIRY EQUIPMENT**

**HOW BIG A COOLER DO I REALLY NEED?**

Depends on a lot of things. But one thing's certain. Mueller makes the milk cooler that's right for your operation. And it's built to last. So it'll have high resale value the day you need a bigger cooler. For help deciding how big a milk cooler you need, contact your local Mueller dealer.



**Martin's Refrigeration, Inc.**

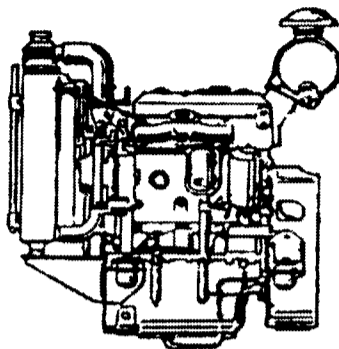
Phone (717) 352-2783 1122 Woodstock Rd. Sales & Service Fayetteville PA 17522

MUELLER THE MILK COOLING SYSTEMS SPECIALISTS

**MUSSER REFRIGERATION**

**Bulk Milk Tanks Sales & Service**  
**Belt Driven Cooling Compressors**  
**Walk-Ins • Ice Boxes • 12 Volt Systems**

1583 Main St., P.O. Box 126  
 Goodville, PA 17528  
 717-445-6991



**IVECO aifo**

You will find these diesel engines in tractors, fork lifts, cranes, farm equipment, etc. So why not try one for your dairy, shop or whatever your needs are.

Distributor For



CHARGE-MASTER Battery Chargers

**HOOVER DIESEL SERVICE**

255 Mascot Rd., Ronks, PA 17572  
 (717) 656-3322 (717) 295-1729  
 362 Blackburn Rd., Quarryville, PA 17566  
 (717) 786-8839

**MATS...PROVEN TO PLEASE**



**Your Ultimate Choice For Safety, Economy & Durability**

STALL, WASH RACK, AND AISLE MATS

- Shock Absorbing
- Reduce Bedding Costs
- Reduce Cleanup Time
- Textured or Button Top Non Skid Surface
- 12 Yr. Limited Warranty
- Available in Standard or LOKTUFF®

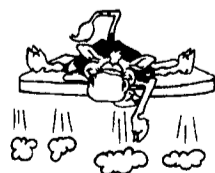
- Custom Sizing
- 1 1/2" Thickness
- Easy Installation
- Non-Skid Surface
- Totally Non-Absorbent
- Anti-Fungal, Anti-Bacterial
- Proven for 3 Years
- 3-year limited warranty

**NEW! DAIRY BIG LOK**

For Alleyways  
 Safety, Economy & Durability  
 • Advanced interlocking design  
 • Will not roll, buckle or curl



We have been selling Humane mats for over 35 years



**SUMMIT FLEXIBLE PRODUCTS**  
**Mighty Lite™**  
**THE PROVEN DAIRY MAT**

- A Full 5 Year Warranty that protects you even against wear & tear in tie stall and freestall barns
- Non-absorbent closed cell foam does not support bacterial growth
- Non-abrasive surfacing to protect hocks, teats and udders

Lightweight • Easy to install • Easy to clean

**Silo-Matic** **HANSON** **Badger**  
**Show-Ease Stall Co.**  
 573 Willow Road, Lancaster, Pa 17601  
 PHONE: (717) 299-2636  
 FAX: 717-299-1074

DeLaval 777VP vacuum pump, distribution tank & oil reclaimers, 60 CFM, \$2000. 717/532-3957

Water bowls, great buy, all operating, 25 Nelson #900 w/out heaters. 610-347-2186 lv msg

DeLaval 2" S/S pipeline for 40 cows, plus 4 Flo-vu milk claws. After 8pm, 717-776-6540.

**NEW & USED SPUTNIKS (and Sputnik parts!) Milkers**  
**NOBLE ROAD MILKING EQUIP.**

523 KIRKWOOD PIKE • KIRKWOOD, PA 17536 (717)529-1226

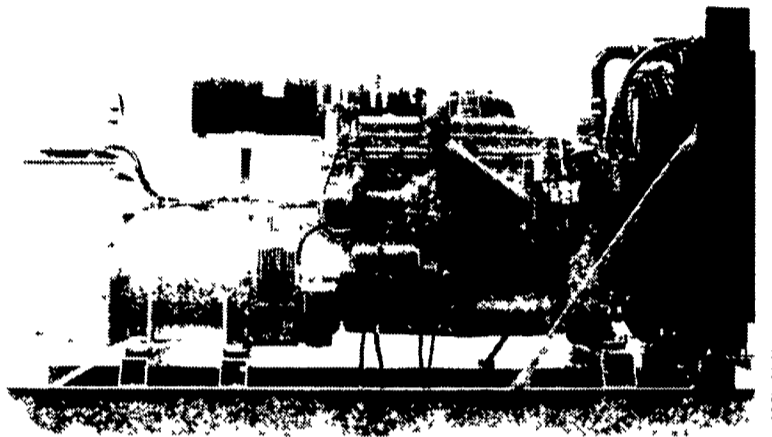
Dairy Equipment & Supplies • Sales, Service, & Repair  
 Westfalia • DeLaval • Top Line • Bou-Matic  
 Animal Health Supplies • Soaps & Detergents

**SPECIAL PRICE:** Sputnik socks, new vacuum pumps, carrying pails, stainless steel tubs, and inflations.

**WE INSTALL VACUUM SYSTEMS!**



**GENERATORS**



**MARTIN ELECTRIC PLANTS • Manufacturer of: DIESEL, LP GAS, NATURAL GAS, PTO Automatic & Manual Start Systems**  
**USED UNITS ALSO AVAILABLE**

Call Us For All Your Generator Needs!

**MARTIN ELECTRIC PLANTS**

280 Pleasant Valley Rd., Ephrata, PA 17522-8620  
**800-713-7968**

Tel: 717-733-7968 Fax: 717-733-1981

**Waterbeds for Cows**



The ALANTA Waterbed for cows is a revolutionary product. Comfortable, safe and hygienic, it greatly improves your cow's bedding and therefore prevents the milk production. It is the ultimate floor covering for the modern, animal-friendly dairy farm.

The ALANTA Waterbed is made of non-slip rubber with a water-filled compartment in between. Cows can sleep on it for 10 years!

**COMFORTABLE**  
 The waterbed molds itself to the cow's shape. It's cool in summer and pleasantly warm in winter.

**SAFE**  
 Thanks to the non-slip rubber upper surface, the cow is gripped firmly and cannot slip off. In this way the ALANTA waterbed keeps damage to hooves to a minimum.



Here's What Some of Your Neighbors Say About Alanta Waterbeds:

**David Bitter, Fleetwood, PA**  
 "We are very pleased with the decision to go with the waterbeds. First calf heifers have adapted exceptionally well and are often lying down within two hours of being put in the stall."

**Ichthus Farm, Litz, PA**  
 "I'm pleased with how the waterbeds retain their comfort over time."



**LAPP'S BARN EQUIPMENT, INC.**

5935 OLD PHILADELPHIA PIKE, GAP, PA 17527  
 PHONE: 717-442-8134 • FAX 717-442-3112

SALES & SERVICE

**ATTENTION DAIRY FARMERS**

We Need Good Used Tanks  
 100 - 6,000 Gal. - Call Us

- |  |                                |                                    |
|--|--------------------------------|------------------------------------|
| • 150 Gal. Mueller                         | • 600 Gal. Majonnier           | • <b>SOLD PA</b> Mueller OH (Nice) |
| • 150 Gal. Zero                            | • 600 Gal. Mueller M           | • 1250 Gal. DeLaval                |
| • 150 Gal. Sunset                          | • 600 Gal. Mueller OH          | • 1250 Gal. Surge                  |
| • 200 Gal. Majonnier Self Contained (nice) | • 600 Gal. Storage             | • 1250 Gal. Storage                |
| • 200 Gal. Mueller                         | • 625 Gal. Girton D5           | • 1500 Gal. Girton D4              |
| • 200 Gal. DeLaval                         | • 625 Gal. Sunset              | • 1500 Gal. Girton D5              |
| • <b>SOLD PA</b> Tolan                     | • 700 Gal. Mueller O           | • 1500 Gal. Zero                   |
| • 250 Gal. Sunset                          | • 700 Gal. Mueller OH          | • 1500 Gal. Mueller OHF            |
| • 250 Gal. Milkkeeper (self contained)     | • 700 Gal. Mueller M           | • 1500 Gal. Mueller                |
| • 250 Gal. Mueller                         | • 700 Gal. Storage             | • 1500 Gal. Darikool               |
| • 300 Gal. Mueller                         | • (3) 800 Gal. Girton D4       | • 1500 Gal. DeLaval                |
| • 375 Gal. DeLaval (Self Contained)        | • 800 Gal. Surge               | • (4) 1500 Gal. Storage            |
| • 400 Gal. Mueller                         | • <b>SOLD</b> DeLaval Flat Top | • 1600 Gal. Surge nice             |
| • 400 Gal. Sunset                          | • 800 Gal. Mueller M           | • 800 Gal. Mueller M               |
| • 400 Gal. Girton D4                       | • 800 Gal. Mueller OH          | • 2000 Gal. Darikool               |
| • (4) 400 Gal. Storage                     | • 900 Gal. Mueller OH          | • 2000 Gal. Mueller OE             |
| • (3) 500 Gal. Girton                      | • 1000 Gal. DeLaval            | • 2000 Gal. Mueller OH             |
| • 500 Gal. Mueller M                       | • 1000 Gal. Mueller OH         | • (2) 2000 Gal. Storage            |
| • 500 Gal. Mueller O                       | • <b>SOLD OH</b> Mueller M     | • 2500 Gal. Mueller OH             |
| • <b>SOLD OH</b> Mueller V                 | • 1000 Gal. Mueller M          | • 2500 Gal. Storage                |
| • 500 Gal. DeLaval                         | • 1000 Gal. Mueller O          | • 3000 Gal. Mueller OH             |
| • 500 Gal. Sunset                          | • <b>SOLD PA</b> Darikool      | • <b>SOLD PA</b> Surge             |
| • (4) 500 Gal. Storage                     | • 1000 Gal. Surge              | • 3000 Gal. Storage                |
| • 500 Gal. Majonnier                       | • <b>SOLD PA</b> Sunset        | • 4000 Gal. Mueller OH             |
| • 500 Gal. Milkkeeper                      | • 1000 Gal. Sunset Flattop     | • 4000 Gal. Storage                |
| • (3) 600 Gal. Girton (D4)                 | • 1000 Gal. Majonnier          | • 5000 Gal. Mueller OE             |
| • 600 Gal. Girton D5                       | • 1000 Gal. Girton D5          | • 5000 Gal. Storage                |
| • 600 Gal. Darikool                        | • (4) 1000 Gal. Storage        | • 6000 Gal. Milk or Storage        |

**HEAT EXCHANGERS**

- Therma Stor 80 • Therma Stor 100
- Mueller Fre Heater 105 Gal.
- Therma Stor III, 120 Gal. • Mueller Fre heater 50 Gal.
- 300-6000 Gal. Storage Tanks

Installation, Sales And Service

**RAY SHENK**

505 E. Woods Drive Litz, PA 17543  
 Sales 717-626-1151 24 Hr. Service

**FOR MORE INFORMATION ON COOLING CONTROL, CHECK HERE.**

OR HERE.

Blue light flashes to indicate which cooling units are engaged

OR HERE  
 Flashing green lamp denotes pre cooling cycle during subsequent milkings



OR HERE.

Amber lamp shows wash rinse or sanitize cycle

OR HERE.  
 Green lamp indicates current agitation cycle

OR HERE

Red light flashes when milk is above 43 F or below 35 F

The new Mueller® Sentry™ is the only refrigeration control system that gives you all the information you need to monitor your milk cooling and cleaning functions at a glance. And Sentry allows you to control and customize all cycles to fit your milking schedule. With Sentry cooling control has finally entered the Information Age



THE MILK COOLING SYSTEMS SPECIALISTS®

**GOOD USED TANKS**

- |                 |                  |
|-----------------|------------------|
| (4) 300 Gal. M  | (2) 800 Gal. OH  |
| 400 Gal. M      | (2) 900 Gal. OH  |
| 500 Gal. OH     | (3) 1000 Gal. OH |
| (2) 600 Gal. OH |                  |

Trust! We Work At It.  
 AUTH. MUELLER DEALER

**PRIEST'S REFRIGERATION**

20205 Marsh Haven Lane, Hagerstown, MD 21742  
**301-797-3921**

MD HVAL 06 16005 24 HOUR SERVICE