

1A CONSTRUCTION EQUIPMENT

4WD loader, 4-cyl. Detroit w/cab, \$3500. TCM 8000lb pneumatic forklift, triple mast, \$4500. 215-723-0540

1981 555 Ford backhoe, 2WD, canopy, \$10,000; 1981 555 Ford backhoe, 2WD, cab, 4-in-1 bucket, \$12,000. 610-767-8750

NH LX465 skid loader w/ dirt bkt, tooth bar, remote hyd, explosion door, 1-owner, 800 hrs, \$12,500 obo. 410-442-1854

BINKLEY & HURST BROS. OFFERS QUALITY USED CONSTRUCTION EQUIPMENT

Need a Lift? "Price Reduced"
1986 Case Cummins Powered 4-Wheel Drive Forklift with 21 Foot Mast



6,000 lb Rating with Side Shifter, Used Around Our Shop (UT 4557) Ask For Leonard - Was \$22,500
Now \$20,900

John Deere 70D Mini Excavator with Dozer Blade



1988 Model with Cab and Aux Hyd, 24" Trenching Bucket, 7-Ton Weight Class, 55 HP Range, Approx 1700 Hours, **Don't Miss This One!** (UT 4695)

Set of (4) 425x22 5 Goodyear 167 Recapped Grader Tread Tires, Mount-On Spoke Type Wheels, Note Replacements For 10 00x20 for Flotation Conversion!

Need a Lift? Lull Shoot Boom Forklift - Ideal for Framing & Masonry, etc.



6,000 lb Lift, 34 foot Lift Reach, 4-Wheel Drive with Crab or 2-Wheel Steering, Power Shuttle Reverser, 3 Speed on-the-go Power Shift, with Rotating Pallet Forks & Brick Guard (UT 4659)

Nice 20-Ton Tilt Top Trailer Just Arrived!
(UM 4721)

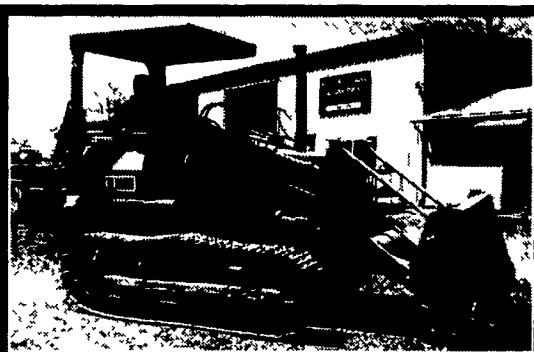
3-Axle Gooseneck 2000 Model Hudson Trailer
Nice Trailer! Priced To Sell!

BINKLEY & HURST BROS., INC.
(717) 626-4705

133 Rothsville Station Rd
P.O. Box 0395 Litz PA 17543 0395
Located 1/2 Mile North of Rothsville

1-800-414-4705
Fax 717-626-0996

Visit us on the Internet at <http://www.casecorp.com>
Case III is a registered trademark of Case Corporation



Caterpillar 931 Crawler Loader, V. Good Cond. \$16,000

Heavy Equipment Loader Parts, Inc.
10070 Allentown Blvd., Grantville, PA 17028
No Sunday Calls (717) 469-0039

SANDBLAST EQUIPMENT - AIR COMPRESSORS



AIR COMPRESSORS

- 175 Ingersoll Rand Detroit 353 Diesel \$2,500
- 1996 Leror 185 C FM JD Diesel \$5,500
- Ingersoll Rand 50 KW Generator, Cummins Diesel \$1,500
- 1988 Ingersoll Rand 375 Deutz Diesel \$3,800
- 1986 Ingersoll Rand 750 C FM L-10 Cummins \$6,000
- 1990 Ingersoll Rand 185 J D Diesel \$4,500
- 300 Lb Blast Pot with Hose And Nozzle \$500
- 48x36 Blast Cabinet with Dust Collector \$900
- (4) 600 Lb Blast Pot with Deadman Rebuilt \$800
- 1988 Leror 250 C FM Cat Diesel \$4,000
- 1994 Sullair 375 C FM JD Diesel \$5,500
- 1988 Ingersoll Rand 175 J D Diesel \$4,500

Always Buying Blast Equipment and Compressors NEW AND USED Sandblasters, Blast Cabinets, and Air Compressors
Repairs on Air Compressors & Sandblast Equipment - Trade-ins Welcome

Titan Abrasive Systems, Inc.
570/648-4774

BUYING & SELLING USED CONSTRUCTION EQUIPMENT, NEW & USED PARTS & ATTACHMENTS

CALL
H.E.L.P., INC.
(717) 469-0039
(717) 469-7679 FAX

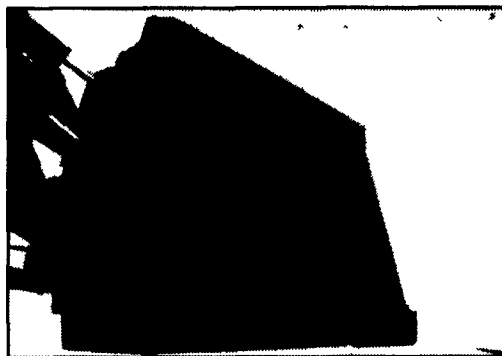
Specializing In Caterpillar Parts also available for Case, Fiat, IHC, Komatsu, Deere, Etc.

ALL PARTS AT DISCOUNT PRICES!
****PARTS LOCATING SERVICES****
Call Us For Your Parts & Service Manual Needs

HEAVY EQUIPMENT LOADER PARTS, INC.

10070 Allentown Blvd. Grantville, PA 17028

SKID STEER LOADER BUCKETS



72" Low profile \$639
17.1 Cu. Ft. Capacity

Other Sizes Available - Call For Prices

Meets original manufacturers specifications



110 South Railroad Ave. New Holland, PA 17557
800-346-8319

Visit our website: abcgroff.com

Monday thru Friday: 7:30-5:00; Saturday 7:30-Noon

Topsoil screen, Barber green double deck screen portable. \$13,500 973-729-2112.

Topsoil screen, power screen Mark II with shredder, portable w/40' stacking conveyor. 973-579-5353.

Symons concrete forms 973-579-5353.

JD 350 trak loader, hoe, brkts. PS, new pins & bush \$5,900. 717-445-5969.

72 Chev. dump truck, 10 ton rebuilt dsl, \$4500; 1989 const. trailer, \$1200; Sullivan air compressor, \$1000; Jackhammer w/ hoses, \$550. 215/257-1918

AC HD5 track loader, new radiator, clutch/pressure plates, throwout bearing, rebilt trans, \$2800. 570-836-8336

IHC #165 crawler ldr, 100 hrs on eng O/H, \$9,250 OBO. Call 6pm to 8pm, 908-996-4101.

D3 Cat dozer, 6-way blade, ROPS, new UC, rebuilt trans., clutches, new paint, \$13,900. 717-859-3501

IH 3514 Dsl. Backhoe, \$6,500/obo; Triaxle Gooseneck 18,000 GVW, \$1,500. 610-863-4534.

10 ton roller. 9' power box paver ex cond. 717-367-6670

310A JD 4 cyl. dsl loader backhoe, X-hoe, 2' bkt, cab, new rubber, good cond, \$11,000. 717-8657447

Cat 426B Backhoe, 1995, Cab, X-Hoe, 4x4, 2705 Hr, Very Tight Machine	\$29,900
Cat 953B Track Loader, 1996, 95% UC, OROPS, Heat, New Paint, Rear Ripper.	\$73,900
Case 1845C Skid Steer, 1996, 657 Hr, Very Good	\$14,900
Sakai SV500D VIB, Compactor 84" Smooth, 3,352 Hr, 94.	\$36,500
Cat 312 Excavator, 3,909 Hr, Painted, Excellent, 1993	\$39,500
Choice of 2 Tramac BRH400s Ram Hammer, Just Rebuilt	\$9,800
JD 310E Backhoe, 4X4, Cab, 1998, Aux Hydraulics, Reg. Stick, 1,599 Hrs	\$39,900
JD 310D Backhoe, 1995, Cab, Heat, Aux Hyd, Reg. Stick, 3,565 Hrs	\$24,900
Wain-Roy Q-Tach for JD 310D & E Backhoe, 24" Bucket Included	\$475
(2) Ingersoll-Rand FX130 Trench Rollers, 94 & 95, Remote & Manual, Choice.....	\$6,900

STONEY CREEK
CONTRACTOR SERVICES
EQUIPMENT RENTALS

415 Park Road
FLEETWOOD, PA 19522
FAX 610/944-1562

610/944-5332
Cell 610/914-3161
TOLL FREE 877/944-1562

	JD 450G, Good U/C, 6 Way Blade \$24,000		Cat 953, Cab, 4 in 1 Bucket, Rear Ripper \$37,500
	97 Lull 844C, 42 Forklift, 8000 lb 4x4, 42' Reach \$41,000		Case 680L, 4x4, Ext Hoe Cab, Cummins Diesel \$19,500
	Case W20C Loader \$13,500		Hitachi EX200-3, Low Hours, Excellent \$46,000
	Cat 930 Loader SOLD \$22,000		Baker, 8,000 lb Cap, Deutz Diesel \$6,000
	JD 670 Graders, 12 Blade 1 w/Snow Wing \$19,000 & \$25,000		Hyster, 11,000 lb Cap, Dual Wheels Perkins Dsl \$7,500
	Cat E120B & 110B Excavators, 5, 4 To Choose From \$22,500 to \$24,500		Cat 943 Crawler Loader, EROPS, Good UC, Recent Eng Rebuild \$37,500

Cat 953 Crawler Dozer, EROPS, 4-in-1 Bucket, Ripper	\$38,500
Bomag BW172, Smooth Drum Vibratory Roller	\$18,000
JD 455D Crawler Loader, Good UC, + Winch	\$14,000
Cat D5B Dozer, Cab, LGP, Excellent Condition	\$19,500
91 Bobcat 943 Skid Loader, New Tires	\$11,500
94 Bobcat 953	\$12,500
773 Bobcat, Good	\$11,000
86 JD 450E Dozer, 6-Way, Good UC, ROPS	\$20,000
Marklift 30' Man Lift, 4x4, Mechanics Special	\$6,500

PAVING EQUIPMENT

Mauldin 550E Paver, 8'-12', Like New	\$15,000
Mauldin 500 Paver	\$6,000
Hyster 350C Roller	\$6,500
Case 252 Tandem Vibratory Roller	\$7,500
95 Ingersoll Rand BA30 Tandem Vibratory Roller	\$8,500
Stone Wolfpack 2500 double drum asphalt roller	\$3,000

Weaver's Equipment Sales
RD#1, Box 418, Milton, Pa. 17847
Phone: 570-523-9598