

**Shippensburg Produce Auction**

Shippensburg, Pa.  
Report Supplied by Auction  
April 26 and May 1, 2001  
APPLES: 2.50-3.50 1/2 BU.  
ASPARAGUS: 1.20 LB.  
CABBAGE: 4.75-5.25 50 LBS.  
ONIONS: SPRING .80 BUNCH, 1.00-10.00 50 LBS.  
POTATOES: 3.00-5.50 50 LBS.  
FLOWERS: 4 1/2" POT .30-1.70,  
ANNUAL AND PERENNIAL FLATS 3.00-10.00, HANGING BASKETS 4.00-18.00, PLANTERS 5.50-17.00.  
NURSERY STOCK: SHRUBS 2.00-11.00; TREE 17.00-21.00.  
SALE DAYS TUES. AND THURS. AT 9:30 A.M.

**Kutztown Produce Auction**

Kutztown, Pa.  
Report Supplied by Auction  
April 28, 2000  
ASPARAGUS: 1.95-2.20 LB.  
ONIONS: .20-.45 BUNCH.  
FLOWERS: BEDDING PLANTS 3.50-9.00 FLAT; PANSIES 2.00-6.00 FLAT; HANGING BASKETS 2.00-9.00; GERANIUMS .90-1.50 EACH, PERENNIAL POTS 2.00-6.50; PERENNIAL PLUGS .45-.65.  
VEGETABLE PLANTS: 2.00-6.00 FLAT.  
NURSERY STOCK: JUNIPERS 3.00-7.00; ARBORVITAE 4.00-15.00.  
AUCTION DAYS TUES. AND THURS., 10 A.M HAY AND STRAW SAT 9 A.M.

**Lebanon Produce Auction**

Reistville, Pa.  
Report Supplied by Auction  
May 1, 2001  
ASPARAGUS: 1.70-1.75 BUNCH  
POTATOES. WHITE 1.00-6.25  
RHUBARB 45-.75 BUNCH  
SPINACH. 90-2.75  
PLANTS RASPBERRY 3.50,  
STRAWBERRY 1.75, CHERRY TOMATOES 10-.25, TOMATOES 1.10,  
CHIVES 1.00; LETTUCE 10-1.50  
FLOWERS BEDDING ANNUALS 2.50-9.00, PERENNIALS 1.25-5.00,  
HANGING BASKETS 1.65-6.50  
SALE DAYS TUES AND FRI

**Leola Produce**

Leola, Pa  
Report Supplied by Auction  
May 3, 2001  
ASPARAGUS: 1.00-1.50 BUNCH.  
ONIONS: SPRING 12.00-14.00 BOX BUNCHED.  
RADISHES: 10.00-14.00 20 BOX BUNCHED.  
RHUBARB: 10.00-14.00 20 LBS.  
SPINACH: 4.00-6.00 BOX.  
TOMATOES: GREENHOUSE 30.00-40.00 25 LBS.  
FLOWERS: BEDDING ANNUALS 6.00-8.00 FLAT; PERENNIALS .80-1.10.  
VEGETABLE PLANTS: TOMATOES .50-.80 POT; HANGING BASKETS 6.00-10.00.  
HERBS: 6.00-8.00 FLAT.  
TREES: CHERRY 15.00-20.00.  
SALE DAYS MON., TUES., THURS., FRI., 8:30 A.M.

**Corn Belt Feedstuffs**

St. Joseph, Mo.  
May 1, 2001  
Report Supplied By USDA  
CORN BELT FEEDSTUFFS: Wholesale Bids. Truck or Rail dollars per ton.  
FOR THE WEEK: Abundant spring forage everywhere offering a cheap source of food for livestock. This accounted for seasonal decline in feedstuff prices. Pastures and hay crop looking good so far this spring and planting of row crops on schedule. Supply side of feedstuff production looking very good and this lowered prices for immediate

delivery. Producers already building inventories for next winter. Very few drought areas are currently on the weather maps.

SOYBEAN MEAL: 44 percent rail bids 2.00 to 3.00 higher at 149-153.00. 48 percent rail 2.00 to 3.00 higher at 159-162.00. Truck 44 percent 3.00 higher at 155-158.00; 48 percent 2.00 to 3.00 higher at 159-166.00 per ton.

CORN BY-PRODUCTS: Gluten Feed 21 percent, Interior Points, 1.00 lower at 46-58.00; Chicago 2.00 to 3.00 lower at 50-68.00. 60 percent Gluten Meat, Interior points steady to 10.00 higher at 220-240.00; Chicago 5.00 to 10.00 lower at 225-230.00. Rail hominy feed Central Illinois Points, steady to 1.00 lower at 45-50.00; trucks steady to 1.00 lower at 47-52.00. Crude corn oil 25 points lower at 14.00-14.50 cents per lb.

MIDLINGS: Northwest steady to 2.00 lower at 42-48.00; Buffalo 2.00 lower 43-48.00 per ton.

ALFALFA PELLETS: Toledo, Ohio 17 percent dehydrated, steady at 133-140.00 and 15 percent sun-cured steady at 125-135.00 per ton. Toledo meat 17 percent, steady at 135-142.00. 15 percent, steady at 130-137.00 per ton.

DISTILLERS DRIED GRAINS: Central Illinois steady to 1.00 higher at 85-95.00; Chicago 2.00 to 5.00 higher at 95-100.00; Lawrenceburg 10.00 lower at 90.00. Nebraska 5.00 to 20.00 lower at 90.00. Minneapolis steady at 80.00 per ton.

BREWERS DRIED GRAINS: Newark, New Jersey, steady at 80.00. Williamsburg, Va., steady at 65.00.

**Mercer Livestock Auction**

Mercer, Pa.  
May 1, 2001  
Report Supplied By USDA  
CATTLE 414...(PDA)..Compared with last week's sale..cows .50 to 2.00 lower. STEERS: Choice 2-3 1045-1355 lbs 75.00-79.75, Select 1-3 69.50-75.00, few Standard 1-2 65.00-70.00.

HOLSTEIN STEERS: few Low Choice and Select 1155-1295 lbs 63.00-66.00, couple Standard 1-2 58.00 & 61.50.

HEIFERS: Choice 2-4 980-1370 lbs 71.00-76.00, Select 1-3 64.00-77.00, few Standard 1-2 54.50-60.50.

COWS: Breakers 75-80% lean 45.00-52.50, one 54.50, 70-75% 37.00-44.00, Boners 80-85% lean 41.50-49.00, Lean 85-90% lean 37.25-45.00. Shells down to 30.00.

BULLS: Yield Grade 1 1300-2145 lbs 60.00-64.25, Yield Grade 2 1000-2285 lbs 50.00-59.00.

FEEDER CATTLE: STEERS: few Medium 1 400-630 lbs 80.00-95.00, few Medium 2 550-850 lbs 69.00-80.00, Large 2 275-450 lbs 77.00-87.00; HEIFERS: few Large 1 500-600 lbs 80.00-89.00, Large 1-2 650-850 lbs 56.00-66.00, Medium 1 300-550 lbs 79.00-100.00, 550-670 lbs 71.00-80.00, Medium 2 200-300 lbs 70.00-81.00, 300-550 lbs 58.00-80.00, 550-700 lbs 65.00-77.00; BULLS: Medium 1 275-450 lbs 80.00-108.00, Medium 2 300-550 lbs 67.00-85.00, Medium 1-2 550-700 lbs 64.00-77.00.

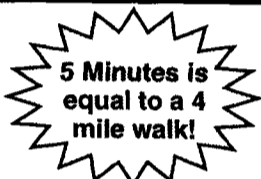
CALVES 136...VEALERS: Standard and Good 80-110 lbs 30.00-60.00, Utility

50-80 lbs 10.00-28.00.  
FARM CALVES: No 1 Holstein bulls 85-115 lbs 110.00-147.50, No 2 85-115 lbs 60.00-110.00; few No 1 Holstein heifers 95-115 lbs 325.00-400.00, few No 2 80-100 lbs 125.00-300.00.  
Beef type bulls and heifers 100-140 lbs 130.00-155.00.  
HOGS 134...BARROWS AND GILTS: 49-54% lean 230-260 lbs 47.25-49.85, 45-50% lean 230-260 lbs 45.50-47.00, 40-45% lean 200-300 lbs 39.00-43.25.  
SOWS: few US 1-3 300-410 lbs 38.50-39.00.  
BOARS: one 560 lbs 22.00.  
FEEDER PIGS 6...Few 1-3 35-40 lbs 37.00-55.00 per head.  
SHEEP 3...SLAUGHTER SHEEP: couple 14.00.  
GOATS 4...(All sold by the head). One Medium Nanny 29.00, few Small Kids 7.00.

**Dewart Livestock**

Dewart, Pa.  
Report Supplied By Auction  
Monday, April 30, 2001  
STEERS: TOO FEW TO QUOTE.  
HEIFERS: TOO FEW TO QUOTE.  
GOOD COWS: 40.00-48.25.  
CANNERS AND CUTTERS: 30.00-40.00.  
BULLS: 50.00-55.75.  
VEAL: 90-190 LBS. 150.00-450.00;  
70-90 LBS. 60.00-150.00.  
HOGS: 42.00-46.00.  
SOWS: 30.00-37.00.  
FEEDER PIGS: NONE.

THE ORIGINAL • THE ORIGINAL • THE ORIGINAL • THE ORIGINAL • THE ORIGINAL • THE ORIGINAL



**"The CHI MACHINE"**

Over 160,000 CHI MACHINES being sold EVERY MONTH!

100% Money Back Guarantee!

The Sun Harmony Chi Machine is backed with 38 Years of Experience & Research With Medical Patents.

Erich from Colorado: "I am over 60 years young. I use the CHI MACHINE 8 to 10 minutes twice a day. I have relief from the pain and stiffness of arthritis, bad knees, legs, ankles and back."

**FREE Information Meeting**

Leola Family Restaurant - Mon., May 21 - 7:30 pm  
One Free "CHI" Given Away

717-656-6408 or 1-800-237-0400

The Fullers of Leola & Belinda Clark  
93 W. Main St. (Rt. 23), Leola, PA 17540  
www.chi4life.com/ginny

Medical Patents

It Does The Work... You Get The Benefits!

- Lose Weight
- Relieves Stress
- Relaxes Muscles
- Improves Circulation
- Increases Energy
- Improves Muscle Tone, Joints and Ligaments
- Improves Digestion and More!

**Aqua-Therm**

Outside Wood Burning Furnace

- Clean
- Safe
- Easy
- Efficient



Buy the top of the line!

- \*Stainless Steel Fire Box
- \*Ash Removal Auger
- \*15 Year Warranty
- \*Thermostatically Controlled

Heat your house, shop and/or hot water with one unit

For more information,

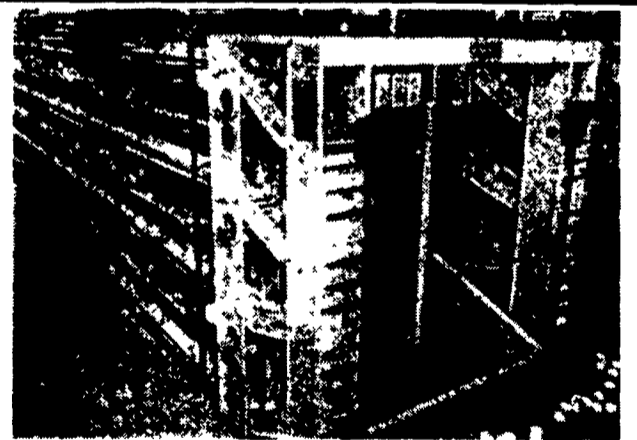
call 717-838-9270 or 1-888-382-8170

Email: mkpowell@paonline.com

**Multi-Deck**

Layer Cage System

- Automated system for feeding, watering, egg collection & manure removal
- Provides stress free environment
- Solid partition walls
- Plastic coated removable floor
- Produces more eggs per hens housed
- Lower feed conversion and mortality rate
- Increases profits



ATTENTION  
PRODUCE  
GREENHOUSE  
NURSERY GROWERS

**NOW OPEN TUESDAY**  
9:30 AM

**THURSDAY**  
9:30 AM

Selling: Potatoes, Apples, Citrus, Flowers, Vine Ripe Tomatoes, Bedding Plants, Eastern Strawberries, Watermelons & Cantaloupes.

Lots of Produce From The South Come In!



Shippensburg Auction Center  
1120 Ritner Hwy. Route 11  
Shippensburg, PA 17527

PAUL W. LEINBACH  
MANAGING DIRECTOR  
717-532-5511  
800-346-2334



1-800-683-2634

Sheldon Goodine  
Regional Manager



**Zeiset**  
Equipment



2187 North Penryn Rd., Manheim, PA 17545  
Phone (717) 665-4056 Fax (717) 665-2240