

Morrison's Cove Livestock

Martinsburg, Pa.

Report Supplied by Auction
Monday, April 23, 2001

CATTLE: 172 HEAD.
STEERS: CHOICE 76.00-80.50, GOOD 74.50-76.50.
HEIFERS: CHOICE 75.50-80.00, GOOD 66.00-72.50.
COWS: UTILITY AND COMMERCIAL 40.00-50.00, CANNER AND LOW CUTTER 23.00-39.50.
BULLOCKS: GOOD & CHOICE 51 50-57.00.
BULLS: YG#1 49.00-56.00.
FEEDER CATTLE: STEERS 63.00-80.00, BULLS 61.00-76.00, HEIFERS 60.00-78.00.
CALVES: 78. PRIME, NO MKT. TEST, CHOICE 93.00-105.00, GOOD 85.00-91.00, STANDARD 21.00-58.00; HOLSTEIN BULLS 90-130 LBS. 115.00-180.00, HOLSTEIN HEIFERS 90-130 LBS 125.00-300.00.
HOGS: 172... US#1-2 46.00-47.00, US#1-3 44.50-46.00.
SOWS: US#1-3 29.00-41.00.
BOARS: 16.00-36.00.
FEEDER PIGS: 25. US#1-3 20-50 LBS. 12.00-44.00.
SHEEP: 26 HEAD. CHOICE LAMBS 120.00-130.00, GOOD LAMBS 100.00-115.00, SLAUGHTER EWES 27.00-40.00.
GOATS: 29.00-90.00.

Belknap Livestock

Belknap, Pa.

Report Supplied By USDA, PDA
April 25, 2001

CATTLE 96...Compared to last

week's sale, Slaughter cows sold steady to 2.00 higher on lean cuts.

STEERS: Select 1-3 69.75-77.25.

HEIFERS: Select 1-3 68.25-74.00, Standard 1-2 57.00-58.00.

COWS: Breakers 75-80% lean 44.00-48.00, one 50.50, Boners 80-85% lean 39.25-44.25, 85-90% lean 36.00-41.00, Shells 35.00 and down.

BULLS: Yield Grade 1 1010-1870 lbs 57.50-71.00, Yield Grade 2 1100-1560 lbs 55.00-57.50.

FEEDER CATTLE. BULLS: few Medium and Large 1 310-360 lbs 91.00-102.00; Medium and Large 2 315-500 lbs 74.00-86.00, 585-895 lbs 64.50-82.50.

CALVES 88.. VEALERS. Standard and Good 110-120 lbs 60.00-75.00, 60-85 lbs 45.00-85.00, Utility 55-125 lbs 25.00-40.00.

FARM CALVES: Holstein bulls Steadt to 10.00 higher. No 1 Holstein bulls 90-125 lbs 130.00-180.00, No 2 75-120 lbs 9.00-135.00; few No 1 Holstein heifers 90-105 lbs 300.00-385.00, No 2 70-130 lbs 150.00-250.00.

Beef type bulls and heifers 75-130 lbs 142.50-177.50.

HOGS 90 .BARROWS AND GILTS. Steady to 1.00 higher 49-54% lean 235-270 lbs 45.00-47.25, 45-50% lean 225-285 lbs 42.50-45.00, 40-45% 260-300 lbs lean 39.00-42.00.

SOWS: US 1-3 340-440 lbs 36.50-40.00.

BOARS: 210-2250lbs 16.00-34.00.

FEEDER PIGS 24...US 1-3 30-35 lbs 30.00-32.50, 45-55 lbs 66.00-70.00-per head.

SHEEP 3...NO MARKET TEST

GOATS 14.(All sold by the head).

Large Nannies and wethers 44.00-70.00,

Medium 21.00-33.00, Large Kids 35.00-

48.00, Small 17.00.

Pennsylvania Livestock Auction

Waynesburg, Pa.

Thursday, April 26, 2001

Report Supplied By Auction

Cattle: STOCK COWS: 40.00-55.00.

SLAUGHTER COWS: Utility & Commercial 40.00-50.00; Canner & Boning Utility 31.00-37.00; Canner & Low Cutter 31.00-37.25; Shells 30.00 & down.

BULLS: YIELD GRADE 1 1500#-2000# 47.00-62.50 YIELD GRADE 2 1000#-1400# Fat 47.00-63.00;

FEEDER STEERS. M & L 1 300-500#

75.00-109.00; 250-280# 80.00-118.50; M 600-900# 60.00-85.00;

HEIFERS M 1 & L 1 300-500# 84.00-107.00; L 1 400-650# 75.00-90.00;

BULLS M & L 1 300-620# 85.00-106.00;

CALVES: Veal Prime 85.00-91.00; Choice 55.00-96.00; Good 35.00-70.00;

Farm Calves #1 Holstein Bulls 90-120# Few 35.00-110.00; #2 Holstein Bulls 80-100# Few 12.50-50.00; Beef -

Bull&Hfrs./HD. 20.00-110.00,

HOGS: Barrows & Gilts #1-2 210-

255# 40.00-48.00; #2-3 255-280# 40.00-

45.00; Sows #1-3 300-500# 31.00-40.00; Feeder Pigs; 1-3 15-20# 5.00-17.00/HD.

1-3 25-35# 10.00-41.00/HD;

LAMBS: High Choice 80-100# 70.00-100.00; Choice 40-75# 100.00-125.10;

Feeder Lambs Good 60.00-90.00; Sheep 20.00-40.00; Fat Sheep 39.00 and down;

GOATS: Large 45.00-85.00/HD.; Medium 30.00-70.00/HD.; Small 10.00-

35.00/HD.;

HORSES: Horses 25.00-65.00; Ponies 20.00-50.00.



GENUINE AGCO Parts.

STRIKE A GREAT DEAL

Airville, PA FARMERS EQUIPMENT
3524 Delta Road
717-862-3967

Annville, PA BHM FARM EQUIPMENT
Rt 934, 2 miles N. of Annville
717-867-2211

Beavertown, PA B&R FARM EQUIPMENT
RR2 Box 2424
570-658-8175

Bechtelsville, PA MILLER EQUIPMENT CO.
RD #1
610-845-2911

Bethel, PA ZIMMERMAN FARM SERVICE
1/2 mile West of Rt 501 on School Rd
717-933-4114

Columbia Cross Road, PA COLUMBIA CROSS ROAD
RD 2, Box 62
570-297-3873

Elizabethtown, PA HERNLEY'S FARM EQUIPMENT
2095 South Market St
717-367-8867

Glen Rock, PA WERTZ FARM EQUIPMENT
6877 Lineboro Road (PA Route 516)
717-235-0111

Mifflinburg, PA ALLEN HOOVER REPAIR, INC.
RD #1, Box 227
570-966-3821

Punxsutawney, PA LONDON FARM SUPPLY
814-938-7444

Quarryville, PA GRUMELLI FARM SERVICE
929 Robert Fulton Hwy (Rt 222)
717-786-7318

Richland, PA LEBANON VALLEY IMPLEMENT CO., INC.
700 E Linden Street
717-866-7518

Roxbury, PA HOLTRY'S EQUIPMENT
10948 Roxbury Road
717-532-7261

Sandy Lake, PA SANDY LAKE IMPLEMENTS
3675 Sandy Lake Rd
724-376-2489

Waynesboro, PA B. EQUIP., INC.
8422 Wayne Highway
717-762-3193

Roller Chain

- A chain that is consistently straight, smooth and burr-free
- Made from only superior raw materials
- Manufactured using ISO 9000 and American Petroleum Institute certified processes



AGCO® Polypropylene Baler Twine

- Quality and Consistency**
- Only superior resins used
 - Manufactured using ISO 9000 certified processes
 - Thoroughly tested ensuring the highest quality
 - Strong, with uniform diameter and durable knotting
 - Stores well, will not mildew or rot



AGCO® TILLAGE ACCESSORIES

- Sweeps, points, shovels and openers in all popular sizes, thicknesses and styles
- All manufactured in the USA and Canada
- High grade steel for extra toughness
- Heat treated to withstand long hours of hard work in all soil conditions



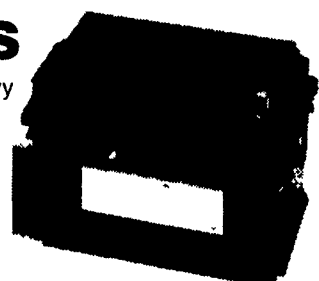
THE SOLAR® ES 5000 BOOSTER PAC

- Portable, cordless and rechargeable with superior cranking power
- Powered by the new GENESIS® battery
- Jump-starts without assistance
- Powers 12-volt devices anywhere
- Maintains usable charge for over two years



AGCO® BATTERIES

- Maintenance-free for heavy duty ag use
- Plenty of cold cranking amps to start any equipment
- Computer designed radial grids maintain energy
- High performance, maximum reliability, competitive price



HDPE PLASTIC FABRICATORS for LEAK PROOF SYSTEMS

Cross gutter systems
Push-offs for free stall barns
Lining of cisterns
Various size boxes & liners

Gravity Flow gutter systems with 5/8" bottoms and 1/4" sides customized to fit your barn all seams welded low maintenance



Call for free estimates - we would be glad to show you operating facilities

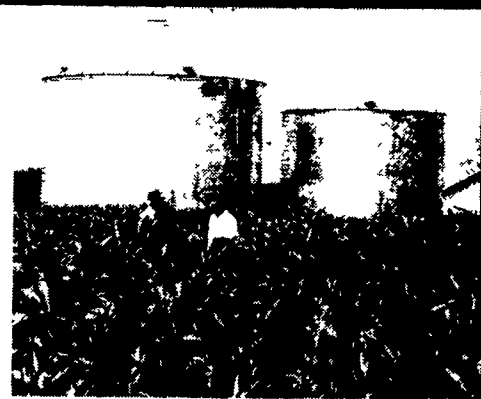
HOMESTEAD EXCAVATING CO.

151 Meckville Rd., Myerstown, PA 17067
717-933-4366



YOUR GRAIN EQUIPMENT HEADQUARTERS

Sales • Service • Installation



provides personal service to every customer. That keeps us one step ahead of the rest.

- Weight Tronix Feed Mill
- Bucket Elevators
- Stirring Systems
- Utility Augers
- Feed Bins
- Wet Tanks
- Grain Bins
- Air Drying Systems
- Grain Dryers
- Parts & Motors

Used GSI/Air Stream Automatic - Batch Grain Dryer Model #300AB - 250 BPH at 10 pt LP Gas/1 Phase • Stainless Steel Sidewall Package Excellent Condition - 4 yrs. old

- ★ Full Line Parts Dept ★
- ★ Sell, Service & Install ★



Approx. 5 mi. South of Lancaster on Rt. 272
14 Herrville Road
Willow Street, PA 17584
Ph. 717-464-3321 or Toll Free 800-732-0053
Mon.-Fri. 6:30 am to 8 pm
Sat. 7:30 am to 6 pm
Sun. Closed

