

35

TRUCKS AND TRAILERS

Mack truck parts for sale. Reasonable prices. 610-921-1971

Military Truck, 1953 Reo Studebaker, 6x6, gas eng. 2 1/2 ton, 10' snow plow, \$3500; Bucks County, 215-795-0660.

78 Ford Bronco, 351 modified eng., AC, auto trans, runs, needs minor repairs, \$1000 OBO. 814-942-7471

1999 24' Appalachian gooseneck trailer, 12,000lb gvw, w/pop-up 4' beaver, like new, \$3000. 717-872-7520

1988 Intl dsl, 7.3 eng, auto trans, A/C, 14' stake body, swing gates, removable sides, 49,000 org mi, \$21,500. 215-361-2311.

'96 Dodge 3500 SLT, dually, extended cab, 4x4, Cummins dsl, most options, 1-owner, ex cond, 80,000 mi, \$19,000. 570-398-2688

1990 Ford dump F450 XLT Lariat, fully loaded, 7.3 dsl 5spd, new paint, 10' dump, 112,000mi, 1-owner/driver, exc. cond., \$12,500 uninspected. 410-877-7015 after 6pm, Northern MD

1980 conv TT, freightliner, T/A, new insp, 4way, wetline, Cummins motor, w/10 spd, trans, \$3,000 OBO. 610-754-6099.

Int S1854 straight truck, DT 466, 30,000 GVW, 21' flatbed w/Zimmerman 16' tri axle 9 ton trailer w/flip up ramps, both units in good cond, farmer owned, \$6,200 complete or will separate, 717-677-9658.

Flatbed trailer w/dump, 102x24', pintle hitch, 19,000 gvw, electric brakes, excellent rubber. 717/258-5224

'78 Chevy grain truck 19' dump body, removable grain sides, roll over tarp, 32,000 GVW, 427, 5+2, geared for 72 mi/hr, new tires, exc cond; '79 KW cabover, double bunk, vg. cond. 450,000 orig. mi. Air-ride Van Trailer, 45'x96"; Van Trailer, 45'x102"; 610-779-3284.

Fruehauf 40' flatbed trailer, 96" wide w/bulkhead, steel diamond plate over wood floor. \$999. 610-987-6348.

1991 Alum. livestock trailer 18x6, bumper hitch. 610-488-9726

18' GN flat trailer, truck parts, Fontain FW, tire carrier. 610-489-0783.

'79 IH 4300, 290 Cummins, 13 spd, runs good, \$3000. 610-367-4644

1992 Ford F-250, 4x4, diesel, flat/utility bed, \$5800. Boss V plow, fits a Ford, \$2800. 717-527-2822.

'72 General equipment trailer, 24,000 GVW, elec brakes, \$2500. 717-225-6711, 717-225-0474

1974 Dodge D600 dump truck, 5+2spd, 10' dump bed, pintle hook, elec brake control, radial tires, 22,000 GVW, well maintained, \$4500. 717-225-6711, 717-225-0474

88 Mack triaxle dump, 300 7sp, 44 rears, steel body, \$25,000. 609/567-0242

IH Dump truck, 17', DT466, 60,000/mi, complete renewed eng. 582 airbrakes, 34,000 GVW. 814-692-4681.

USED TRAILERS

JIM MARINO
USED TRAILER MANAGER
717-492-1806



Great Dane Trailers

1831 AUCTION ROAD
MANHEIM, PA 17545

www.lancaster@greatdanetrailers.com



6 Available
28' x 102" roll door, smooth side
U-pick **\$1,500/ea**
Lebanon Co. **717-865-6860**

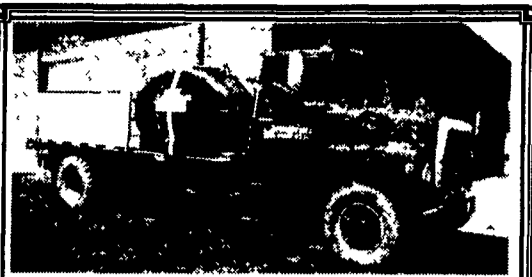


1988 Western Star 425B Cat
Overhauled Spring of '98,
15 Sp 370 Rockwell, Real Solid
Asking **\$11,500**

Call **717/949-2264**



'85 Mack MH613, 300 Engine,
9 Spd. Trans. Wet Line, Good Rubber,
Good Running Truck.
717-439-5518 • 717-249-3988



Ford L900 gas, 1,000 gal. Nurse Tank, with Gas Pump to fill from pond or stream, also 100 gals elect. gas or diesel tank & pump 12 volt.

\$3,500

(410) 937-1981



1994 Int'l. 8100 Cummins L-10, 280HP, Super 10-Spd., 54,000 GVW, Air Ride, A/C, P/S Low Miles, 22' Platform C&C
Many Options **\$28,900**

K.T. GRAHAM, INC. 717-859-3168

LEED TRUCK CENTER

402 South Chiques Rd.
Salunga Exit, Route 283

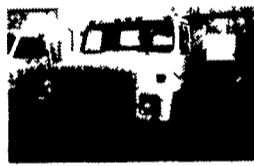
717-898-1200



1985 GMC 7000, 8.2 Liter Diesel, Recent Reman Eng., 5 & 2 Spd., P/S, A/B, 32,800 GVW, 16' C&L Serviced & Insp., Clean ONLY \$4,000



1997 FORD F450, Power Stroke Diesel, P/S, P/B, Dual Wheel, 15,000 GVW, 9' Platform Stake, With Gooseneck Hitch & Class 3 Tow Pkg., Very Clean \$17,900



1987 IHC S1754, 6.9 Liter Diesel, 5&2 Spd., P/S, Hyd Brakes, No CDL Needed, 25,000 GVW, 16' C&C, Insp., Clean \$4,995



1988 HINO FB1817, Turbo Diesel, 6 Spd., P/S, A/C, 17,900 GVW, 118,000Miles, 14' Morgan Platform Dump, Insp Very Clean \$17,900

SCHAEFFERSTOWN - SCHAEFFERSTOWN

BIRCHWOOD AUTO SALES

717/949-6513
BONUS BUY!

1998 FORD F-150 XLT, 2WD, 4.2 V6, AT, AC, PW, PL, PM, Tilt, CC, Cass, Alloys, Black, 40,000 Mi \$13,900

1997 FORD RANGER 2WD, 4 Cyl., AT, AC, AM FM, White, 37,000 Miles \$8,400

1996 CHEVROLET 1500 SILVERADO, 4x4, X Cab, 305 V8, AT, AC, PW, PL, PM, Tilt CC, Cass, Alloys, One Owner, Maroon, 50,000 Miles \$15,900

1996 JEEP GRAND CHEROKEE LAREDO, 4x4, 6 Cyl., AT, AC, PW, PL, PM, Tilt, CC, Cass, Alloys, Keyless, Silver, 46,000 Mi \$14,900

1995 DODGE RAM, 2500 SLT, 4x4, X Cab, 5 Spd, Cummins, AC, PW, PL, PM, Tilt, CC, Cass, Alloys, Red \$16,500

1995 FORD E-350, 15 Pass Van, 351 V8, AT, AC, Rear AC, Tilt, CC, AM/FM, Blue, 74,000 Mi \$11,900

1995 NISSAN XE EXCAB, 2WD, 3.0 V6, 5 SPD., AC, P Mirrors, Tilt, CC, Cass, Alloys, Black, 78,000 Miles \$6,900

1994 FORD F-150 XLT, Ex Cab 2WD, 302, V8, AT, AC, PW, PL, PM, Tilt, CC, Cass, Alloys, Topper, Red/White, \$8,900

1993 FORD F-150 XLT, 4x4, 300, 6 Cyl., AT, AC, AM/FM, Alloys, Blue/White, 60,000 Miles \$9,900

1991 CHEVROLET 1500 SILVERADO, 2WD, 350 V8, AT, AC, PW, PL, Tilt, CC, Cass, Alloys, Topper, Blue/White, 67,000 Miles \$8,900

CALL FOR INFORMATION ON OUR COMPLETE LINE OF CARS AND SUVs

WE ALSO BUY CLEAN USED TRUCKS, OLD OR NEW, GAS OR DIESEL



(717) 949-6513

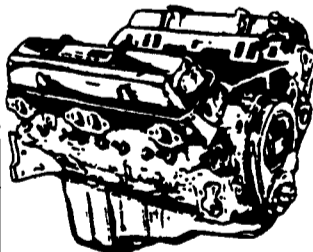
Schaefferstown, PA

SCHAEFFERSTOWN - SCHAEFFERSTOWN

JONES

GM Parts

THE FEELING IS GENUINE



GM GOODWRENCH 350 V8 1973-85 Part Number 10067353 New Engine - Not Rebuilt 36 Month or 50,000 Mile Warranty

New Engine - No Core Fee \$1,299⁰⁰

WE'LL MATCH ANY COMPETITOR'S PRICE!

Goodwrench Transmissions Now In Stock! Call For Great Prices

Call 394-0711 for prices on other New or Remanufactured Goodwrench Engines. 2.5 Liter thru 454 cid. Gas and Diesel

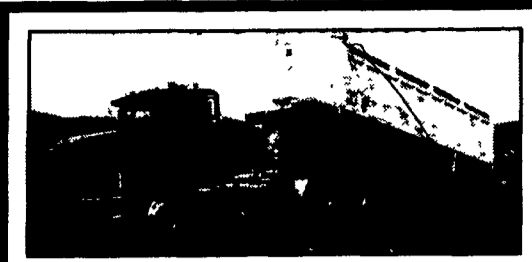
Chevrolet - Pontiac - Olds - Buick - Cadillac - GMC

JONES GM PARTS CENTER

1335 Manheim Pike, Lancaster, PA 17604
Easily Located on Rt. 72 Just off of Rts. 283 & 30
Hours: Mon-Fri 7:30 a.m. - 8 p.m. Sat 7:30-3

(717) 394-0711

MORE THAN JUST POWER.



1990 Mack CH613. E-6 350 HP w/Jake, Mack 9 Spd., Mack 417 Rears, 10 Alum. Whls Comes With 1981 City Tandem 26' Dump Trailer. Both Units Painted And Detailed.

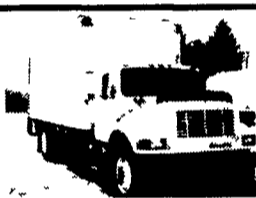
\$26,000 • 610/372-9440



1989 White GMC WIA64T Tractor
3406 Cat @ 350 HP, Jake Brake, Dual Exhaust 12/40 Axles, 9 Speed Transmission, Spring Suspension, Aluminum Front Wheels, Steel Rear

EXCELLENT FARM TRUCK ONLY \$3,500

CARLISLE HARRISBURG AREA 25 Roadway, Drive Cam Co. PA 17013 1-800-828-6878 (717) 249-2922 Fax (717) 249-9058
LANCASTER READING AREA 899 E. Main St. Ephrata PA 17522 1-800-732-0019 (717) 738-2444 Fax (717) 738-2302



1995 IH 4900 DT466, 6 Spd., A/C, Air Seat, Dual Tanks, 33,000 GVW, 22 ft. van, L/G, 120,000 Mi, Clean \$19,500



(3) 1995 IH 4900 DT466, 6 Spd., A/C, Air Seat, 25,500 GVW, 22-24-26 ft Van, Low Miles, Starting @ \$19,500



1995 IH 4900 DT 466, 210 HP, 6 Spd., 33,000 GVW, A/B, A/C, Air Seat, Dual Tanks, 168" C to A, Ex Cond, \$15,500



1993 GMC W-5, 185 HP, Turbo Diesel, 5 Spd., 18,000 GVW, 18 ft. Van with 5000lb Rail Gate, Off Lease, Clean, \$11,500



1998 E350 Ford Power Stroke, Diesel, Auto, 11,500 GVW, 14 ft Van, Off Lease, Ex Cond \$13,900



1994 GMC Top Kick Cat Diesel, 5+2, 25,500 GVW, 186" C to A, Ex Cond, Will Shorten or Add Body, \$14,500 (Also 1995 GMC 20 ft Van Lift Gate)



1995 GMC W-4, Turbo Diesel, Auto, 14,250 GVW, 16 ft Van, Pull Out Ramp, Ex Cond \$13,500



20-24-26 ft Van Body, also 2,500 lb Liftgates \$350



1990 IH 4600 DSL, 5 Spd., 25,000 GVW, AC, 14' Van w/Lift Gate, 72,000 Mi., Exc Cond \$13,900



(2) 1995 GMC W-4 Turbo Diesel Auto, 14 250 GVW 12 Ft. Flatbed Dump, 2 Pull Out Ramps Excellent Condition \$13,900 & \$15,500

MARTIN'S USED TRUCKS & EQUIPMENT INC.

560 Lampeter Rd.
Lancaster, Pa. 17602
Robert Martin (717) 392-6266
(717) 299-6200

Reefers • Vans • Flatbeds • Used Parts
WE SERVICE WHAT WE SELL