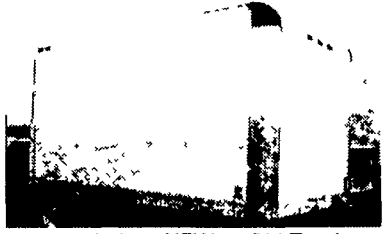


Used Truck Bodies



Installed on NEW or Old Truck
"Makes your Old Truck Look Like NEW!"

• Dry Van Bodies 10' to 24' • Reefer Bodies • Flat Bodies
(Completely Refurbished Bodies in Most Cases)

Same Day Service!

Phone 717-664-1696

CHARTER ENTERPRISES, LTD.
270 Hostetter Road, Manheim, Pa

Tractor Tires 1000016 (1) Pair 6 Ply
182438 (1) Pair - All (4) for ... \$225
Cushman 3 Wheel Scooter 2 Cyl. OMC 3 Speed
High & Low Range Power Take Off \$1,250
1971 International 10 Wheeler Dump 238 Engine
15 Speed Trans. w/Plow & Spreader \$2,500
1965 R Model Tandem Alum Dump 237
Engine 15 Speed \$4,000
Pull Type Sheep Foot Roller \$1,000
18' Steel Dump Body Needs Floor \$200

G&A Clanton, Inc.

350 Lake Road
Avondale, PA 19311
Phone: 610-869-8971
Fax: 610-869-2485

'72 General equipment
trailer, 24,000 GVW, elec
brakes, \$2500.
717-225-6711, 717-225-0474

1992 Ford F-250, 4x4,
diesel, flat/utility bed,
\$5800. Boss V plow, fits a
Ford, \$2800. 717-527-2822.

1978 IH STAKE BODY

w/hydraulic lift gate, excellent hay/straw
truck, needs motor - **\$1,500**
Call (610) 383-7042



1989 KENTUCKY

48', 102', 13'; Air Ride; Logistics;
12' Drop; 11' Deck; 8' Street Side Door;
(3) 4' Curb Side Doors; Rear Swing; 3'
Pin Setting; 102' x 15' Belly Cabinets;
70R.-22.5 Budds; **\$6,500**
Very Good Condition

Lebanon Co. PA **717-865-6860**



84 Fruehauf Flatbed 48'x96";
Rebuilt Brakes, Seals, Bearings,
Excellent Tires; New 3' Tool Box;
Set-up for Forklift. \$4,000

540-592-3691

Specializing in Quality Built Trailers and Used Trucks



HUFFMAN TRAILER SALES FRIENDLY, PROFESSIONAL SERVICE

Peanut hulls available by
self-unloading trailers

Division of Huffman Litter Service



Rt. 11 NORTH, NEAR EXIT 251 •
HARRISONBURG, VA 22802

OFFICE: 540-434-3530
OR 800-825-2545



Featherlite -
Hudson -
Titan - Pace American - Apache Cattle Feeders

TRUCK CAPS • BED LINERS COMPLETE SERVICE DEPARTMENT

Apple Auto Sales, Inc.

Preowned Cars & Trucks

Route 30 - Lincoln Highway East, Gap, PA 17527
717-442-9700 • 717-299-9900 • FAX 717-442-3140
Email contactus@appleautosales.com Web www.appleautosales.com



98 GMC SLT 2500 Suburban
4x4, 1 Owner, Loaded



**92 Dodge 15 Passenger, Great
Hauler!**



**99
Chevy
3500 12'
Box
Truck,
17,000
Mi., AT,
A/C**

**93 Chevy 2500, Utility 305 V8, AT,
A/C, 10,000 Mi.**



\$2,500

72 Ford
12' Stake Body, 4 Spd.



**97 GMC, Utility Crew Cab, 4x4,
78,000 Mi.**

LIFETIME FREE INSPECTIONS • BUY & SELL



1475 Manheim Pike
Lancaster, PA 17601

Ask for Russ Osborn,
Truck Manager
717-393-0625, ext. 381

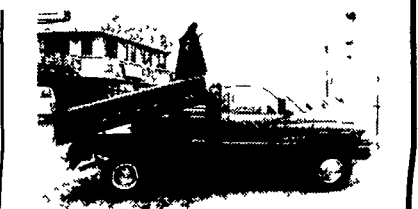
BusinessLink™ Dealer

GREAT SAVINGS - DEMO SALE



2001 DODGE DUAL R/W 4X4 1 Ton Chassis
w/Heil Marauder 8' 2/3 Yard Dump Body, Ball &
Pintle w/6 Prong Trailer Connector, Under Body
Tool Box Back Up Alarm, Manual Roller Tarp,
5.9 Liter Gas, Auto, A/C, H D Snow Plow Prep,
Anti-Spin & More, Whit/Pewter, Only 107 Mi

WAS \$33,960 **NOW \$27,240**



2001 DODGE DUAL R/W 4X4 1 Ton Chassis
w/Rugby 8' 2/3 Yard Dump Body Ball & Pintle 6
Prong Trailer Connector Elec Brake Controller
Under Body Tool Box Back Up Alarm Manual
Roller Tarp 5.9 Liter Gas Auto A/C H D Snow
Plow Prep Anti-Spin & More Flame Red 1004 Mi

WAS \$33,250 **NOW \$26,353**



2001 DODGE DUAL R/W 4X2 1 Ton Chassis
w/Stahl 12' Dump-Stake Body, Steel Platform,
Gallon Elec Hoist, Back Up Alarm, Under Body
Tool Box, Ball & Pintle w/D Rings, 6 Prong
Connector 5.9 Liter Gas, Auto, A/C, White NEW

WAS \$31,835 **NOW \$27,150**



2001 DODGE DUAL R/W 4X2 1 Ton Chassis
w/Knapheide 12' Stake Body Steel Platform
Under Body Tool Box 5.9 Liter Gas Auto Air
Anti-Spin Differential Forrest Green, Only
153 Mi

WAS \$28,650 **NOW \$22,809**

1990 Peterbilt 379
350 HP Cat, 9 Speed Trans,
Low Pro 22.5 Tires on
Budd Wheels, Very Clean,
Complete Set of Maint Records
\$11,950

1986 Peterbilt 349
350 HP Cummins, 9 Speed
Trans, Low Pro 22.5 Tires on
Budd Wheels, Complete Set
of Maint Records
\$8,700

1980 Budd 42'x12'6"
Insulated w/Overhead Door,
24.5 Tires on Budd Wheels,
PA Inspected, Thermoking Unit
w/Stop/Start, Runs, Heats
& Cools **\$3,400**

1982 Utility 45'x13'
Insulated w/Swing Doors, 24.5
Tires on Budd Wheels, PA
Inspection, (Unit not included)
\$2,600

ESBENSCHADE FARMS

Call Crist
717-653-8061 x3034

Air Ride Sliding Trailer Tandem, Hendrickson
Vantrax Off 1999 53x102" Reefer, Outboard
Drums, 10 Hole Hub Pilot, Antilock Brakes,
Automatic Slack Adjusters,
Excellent Condition \$2900

Sliding Trailer Tandem, Off 48x102" Reefer,
4 Spring, Outboard Drums, Automatic Slack
Adjusters, 10 Hole Hub Pilot, Low Miles,
Excellent Condition \$1350

Landing Gear Off 102" Reefer Complete,
Very Good Condition \$200

Freightliner 1997 FLD120 Hood,
Left Front Fender Damaged \$250 OBO

Freightliner 1997 Aluminum Grill,
Fin Bent \$100 OBO

Steering Tire (New) Mounted On Dayton Rim,
1000R20 Radial 16 Ply \$175

Clark Electric Pallet Jack MO HWP40 4000#
12V With Charger, Very Good Condition .. \$950

Trailer Equalizing Hitch, By Pullrite, Fits
1988 And Up Chevrolet Full Size Trucks,
Like New \$350 OBO

Trailer Loading Ramps 13'x2' Fiberglass
1500# Capacity \$150

Cash Register Heavy Duty Electronic,
4 Clerk, Very Good Cond \$175 OBO

Please call Steve at 800/752-9502,
717/362-8117 Mon. - Fri. 8 a.m. - 5 p.m.
or 717/362-3678 nights and weekends.

BRUBAKER'S AUTO SALES

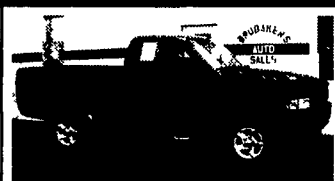
PH. 717-866-5237

Hours: Mon.-Fri. 8 a.m. - 9 p.m.; Sat. 8 a.m. - 6 p.m.

ROUTE 422
MYERSTOWN, PA



99 FORD RANGER XLT 4x4 Ext Cab,
Blue, 3.0 V6, AT, AM/FM/CAS, A/C,
PW, PL, 42,790 Mi **\$14,900**



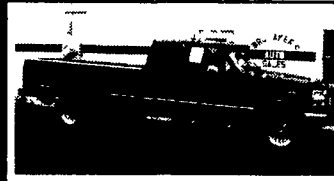
98 DODGE RAM 1500 SPORT 4x4
Black, 318 V8, 5sp, AM/FM/CAS, A/C,
PW, PL, CC, Tilt, 31,066 Mi **\$15,900**



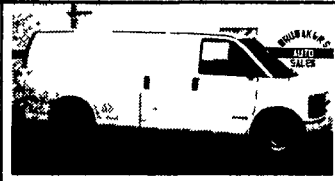
98 DODGE DURANGO SLT 4x4,
7 Pass, Maroon, 318 V8 AT PW PL
CC Tilt, Dual-A/C AM/FM/CAS/CD Pwr
Seat, Keyless Entry, 67,820 Mi **\$17,500**



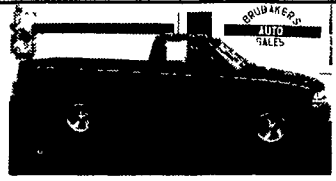
96 CHEVY 1500 SILVERADO 4x4
Ext Cab Green/Tan 305 V8 AT A/C
PW PL CC Tilt AM/FM/CAS/CD
Pwr Seat Keyless Entry Leather
54 165 Mi **\$16,900**



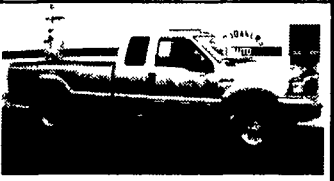
93 FORD F-250 XLT Ext-Cab, 4x4
Turbo Diesel, Red/Black, 5 sp.,
AM/FM/CASS, A/C, PW, PL, CC Tilt
145,395 Mi **\$11,800**



01 CHEVY 1500 EXPRESS CARGO
White, V6, AT, AM/FM/ST A/C 13,255
Mi **\$15,900**



00 CHEVY S-10 LS 2WD, Blue, 4cyl 5
spd A/C AM/FM/CD,
22 590 Mi **\$9,600**



00 FORD F-250 SUPER DUTY 4x4
Quad-Cab, Tan, 6 spd A/C, PW, PL, CC,
Tilt AM/FM/CASS/CD, Keyless Power-
Stroke Diesel, 24,182 Mi **\$28,600**