

'94 Dsl Chevy 2500 p/up
4wd, extended cab, load-
ed, 2-tone, new eng,
trans, batteries etc. Ex
cond \$9800. 814-632-8609

'96 Freightliner Classic,
60" nonintegral sleeper,
Cummins 435hp, Eaton
10spd, 250"WB, alum
wheels, dual stacks,
\$16,900. 717-597-5623

'90 Ford Ranger XLT,
long bed, V6 auto, PS, PB,
AM-FM, dark green,
76,000 miles, excellent
condition, \$3,975.
717-733-2873

95 Mack, 74" bunk, 427
10spd., Eaton trans,
rears, new brakes & radi-
ator. \$27,900 make offer.
717-677-9532.

CHAPMAN FORD LINCOLN MERCURY NISSAN

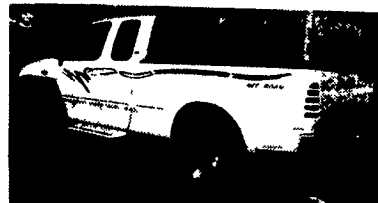
717-272-7671

Parts Dept. Open Daily 8-5
Sat 8-12 717-273-8168



LEBANON

20th & Cumberland Sts.
Rt. 422 West
9-9 Daily, 9-5 Sat.



97 FORD F150 XLT
4x4, Leather, Conversion Pkg.,
Off Road Pkg, #P4782
MUST SEE



94 MERCURY VILLAGER LS
Fully Equipped, #R4662A
\$5,995



97 ISUZU HOMBRE PICKUP
59,000 Orig. Miles, A/C, Stereo,
#1063A • \$6,995



97 FORD EXPLORER XLT
48,000 Orig. Miles, Black Beauty,
#P4794 \$15,995



00 WINDSTAR LX
7 Passenger, Fully Equipped
#R4660 \$17,499



**99 FORD RANGER XLT
SUPER CAB 4x4**
16,000 Orig. Miles, #P4694
\$18,995



**2000 MUSTANG
CONVERTIBLE**
V6, AT #P4737 \$21,499



**99 FORD E350
15 PASSENGER VAN**
V8, AT, A/C, #R4657 \$22,995



**00 FORD EXPEDITION
EDDIE BAUER**
Leather, Moon Roof, Fully Equipped,
CD Player, #P4795 MUST SEE!

Credit Problems? Call 1-888 CARS 4 You

TRUCKS - UTILITY VEHICLES - TRUCKS

Appalachian Manufacturing, Inc.

330-222-2468



20,000# G V.W.
Oil Bath Axle
10K Dual Tandem Trailers - Spring Assist Ramps
Pintle Pull, 18x5, Dovetail \$4,750
Gooseneck, 20x5 \$5,000



24' Gooseneck, 4' dovetail, 1-12,000# G V.W, 6,000#
axels w/easy lube, electric brakes, 7 50-16 tires,
breakaway kit, ramps w/pressure treated deck,
standard 12,000 GVW \$2,995
14,000 GVW \$3,195



16' Car Hauler, diamond plate deck with W/D rings,
self storing ramps, 7,000# G V.W., elect. brakes, both
axels 82" between wheel wells, breakaway kit incl
16' Car Trailer \$1,495 18' Car Trailer \$1,645



21' Low Profile, 10,000#, axel w/easy lube, elect
brakes, pressure treated deck, 10,000# G V.W.,
gooseneck \$3,100
Bumper pull \$2,950

**KEYSTONE TARPS
SERVICE & SALES**

Is A Manufacturer Of Custom Tarps

- Systems
- Tarp Straps
- Storage Covers
- Load Straps
- Gloves
- Used Railroad Ties

1-800-798-TARP (8277)

FAX 570-435-0036 570-435-0752



**99 FORD F350 XLT SUPER DUTY
CREW CAB** 8 ft. Utility Body, Power
Stroke Diesel, 5-Spd., A/C, Class III &
Gooseneck Hitches, 68,000 Miles, Red



Preferred
Warranties
Available
on Most
Trucks

**Bobby Gerhart's
Truck World**

Mon. - Fri. 9-8, Sat. 9-3

2400
E. Cumberland St.
Rt. 422
Lebanon, PA
17042
717-273-7995



99 FORD F250 QUAD CAB 4x4
V10 AT A/C XL Trm. 41,000 Miles White
#F1017



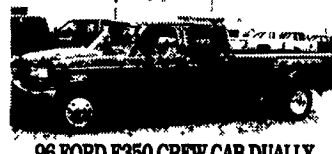
95 DODGE RAM 2500 CLUB CAB 4x4
Cummins Turbo Diesel, 5-Spd., A/C, Laramie
SLT, Most Options, Tow Pkg., Air-Lift
Suspension, Air Control Shocks, 6-Way Power
Seat, 61,000 Miles, Maroon #D345



99 FORD F350 QUAD CAB 4x4
Power Stroke Diesel, XLT, 6-Spd., A/C, Most Options,
65,000 Miles, Black #F996



97 FORD F250 4x4
Power Stroke Diesel, 5-Spd., AC, 8,600 GVW,
AM/FM, 88,000 Miles, Green #F1008



96 FORD F350 CREW CAB DUALY
Power Stroke Diesel, Centurion Pkg., XLT, AT, A/C,
Most Options, Lots of Extras, 49,000 Miles,
Burgundy, MUST SEE



96 FORD F250 XLT 4x4
Power Stroke Diesel, AT, A/C, Most Options,
77,000 Miles, Alloy Wheels, Red,
Absolutely Beautiful #F1002



96 FORD F350 CONTRACTOR DUMP
5 Spd., 351 V8, PS, PB, 103,000 Miles, Red
Ready To Work #999



99 FORD F350 QUAD CAB DUALY 4x4
XLT, Power Stroke Diesel, 6-Spd., A/C, Most
Options, CD Player, Alloy Wheels, 19,000 Miles,
White, #F983



93 DODGE RAM 3500 CLUB CAB DUALY
2WD Cummins Turbo Diesel, 5 Spd., A/C, LE
Pkg., Most Options, 75,000 Miles, Maroon &
Silver #D339



91 FORD F250 4x4
7.3 Diesel, 5 Spd, PS, PB, A/C,
77,000 Orig. Miles, White & Blue, Ex. Cond. #F1000



99 DODGE RAM 2500 CLUB CAB 4x4
Cummins Turbo Diesel, AT, A/C,
AM/FM/Cass, 51,000 Miles White #D335



**95 DODGE RAM 3500
CLUB CAB DUALY 4x4**
Cummins Turbo Diesel, AT, A/C,
Laramie SLT - Most Options, 61,000
Miles, Red - #D347
VERY NICE TRUCK



94 FORD F350 CREW CAB DUALY
7.3 Diesel, XLT, 5 Spd., A/C, Most Options,
148,000 Miles, Black #F984



87 FORD F350 L-PAK DUMP
Power Angle Plow, 460 V8, 4 Spd.,
57,000 Orig. Miles, Blue



**88 FORD F350 CREW CAB
DUALY** 7.3 Diesel, XLT AT, A/C, Most
Options, 155,000 Miles, Red & Silver,
Works & Runs Good



99 FORD F350 CREW CAB DUALY
XLT, 4x4, Power Stroke Diesel, AT, A/C,
Most Options, 52,000 Miles, CD Player,
Red, #F978



84 CHEV 14 FT. STEP VAN
30 Series, 4 Spd., 35,000 Miles,
Blue, 6cyl



97 FORD F350 REG. CAB 4x4
Power Stroke Diesel, XL Trm, AT, A/C, AM/FM,
47,000 Miles, Dk Green #F982



**99 DODGE RAM 3500 DUALY 4x4
QUAD CAB**
V10, Sport Pkg., AT, A/C, Most Options,
48,000 Miles, CD Player, Blue #FD342



94 CHEV 2500 4x4 H.D.
6.5 Turbo Diesel, AT, A/C, 92,000 Miles,
White, #C584



93 DODGE RAM 2500 QUAD CAB
Cummins Turbo Diesel, 2WD, LE Pkg., AT, A/C
Most Options 118,000 Miles, Green & Silver
Very Nice Condition #D340



97 FORD F350 4x4 XLT
Power Stroke Diesel AT A/C, Most Options
CD Player Alum Wheels 63,000 Miles Blue -
Must See #F1013



97 FORD F250 SUPER CAB XLT 4x4
Power Stroke Diesel AT, A/C, Most Options,
51,000 Miles Green & White, #F1009



97 DODGE RAM 3500 CLUB CAB DUALY
Cummins Turbo Diesel 5 Spd A/C Laramie
SLT, Most Options 34,000 Miles, Green, #D333



95 CHEV KODIAK 9 FT. DUMP
366 Allison AT PS PB 25,900 GVW
46,000 Miles - 2 To Choose From