



**WM. COHEN & SONS, INC.**  
**"THE TRUCK PARTS STORE"**

HEAVY DUTY TRUCK PARTS - NEW & USED - REBUILT REARS & TRANSMISSIONS  
**(610) 269-1298 Fax (610) 269-0787 www.cohentruckparts.com**



**95 Morgan 20' Reefer Body**  
 Swinging back doors, curb side door, needs corner & roof section



**96 Morgan 22' Reefer Body**  
 Swinging back doors, curb side door, damage on Thermo-King sheet metal



**92 Hino Model FE**  
 6 cyl. turbo diesel, 6 spd, hyd brakes, 18' reefer body w/rollup door, roll up curb side door

**Ingersoll Rand Air Compressor,**  
 Type 30, 15 HP 3 Phase



**200 Gal. & 550 Gal.**  
 Plastic Tanks For Sale



**Aluminum Tanker/Trailers**  
 7500 gal. and up



**Clark Crane, 14 Ton Capacity,**  
 4-53 Detroit, 60' boom, 14.00x24 tires, runs good, serial #720

**11.1 60 series Detroit engines**  
**12.7 60 series Detroit engines**  
**8.2 non-turbo Detroit engines**



**Michigan Loader Model L30**  
 Quick Coupler, Comes With 1 Yard Bucket and 60" Forks, Runs Excellent



**12' Reefer Body,**  
 under body refrigeration unit, Uses 220 electric. Has damage.



**91 Isuzu NPR, 4 cyl**  
 turbo-diesel, auto, 14' reefer body, 110 electric, 195,969 mi.

**4 I-Beams,**  
 49' Long, 28" High w/12-1/2" Web



**(9) 40' - 45' 1970's & Newer Steel Flatbed Trailers** (also have drop check trailers) some have sliding tandems, all in good condition. \$2,500/Ea. and up.



**94 IH Model 4900**  
 DT466 engine, 5 spd., single rear, air brakes, A/C, 32,900 GVW, double frame, 11x22.5 Budds, 254" W.B.



**New Flatbeds Available**  
 Sizes currently available are 12', 14', 20', 22' and 24'. Racks are also available

**MATHEWS EQUIPMENT CO.**

Located at the intersection of Rt. 30 & Rt. 41 "GAP" (Lancaster County), PA

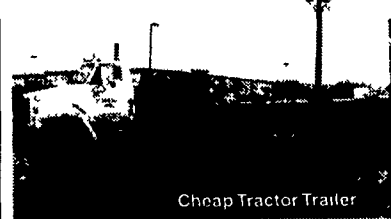
**(717) 442-9113**

*Mack Trucks Our Specialty!*



Mack Warranty

**1998 Mack RD688S Tractor, E7 400hp**  
 w/V Mack II electronics, 9 spd Fuller, 44K rears on camelback, A/C, P/S, dbi frame, headache rack, 187" WB, 13' of useable frame, will take 14-14-1/2' body w/o stretch, 193K org mi, new PA state insp



Cheap Tractor Trailer

**1988 GMC Brigadier, T.T NTC 315**  
 Cummins 9 Speed Road Ranger Trans, 38K Rears, 12K Front, 420K Mi., A/C, P/S, Runs Ex, Good Tires, State Inspected  
**1978 Strick, 40' Tandem Hi Flat Trailer,**  
 Good Condition, Good Tires, State Inspected

**Special Package**  
**\$10,900 Takes Both**



**Mack Truck Parts - Trans. & Rears!**

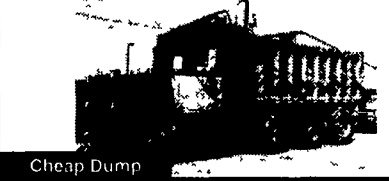
38K Trunnion & Housing Ass. w/Springs, No Diffs ..... \$400  
 38K Differentials Front & Rear, 4.50 Ratio (Early) ..... \$800  
 44K Differentials Front & Rear, 5.12 Ratio (Early)..... \$500  
 85 Mack R Model Hood, Good Cond ..... \$500

Must Sell!



**Mack B81, B83 Truck Tractors, A Lot of Work Done To Some. All Excellent Restoration Projects!** Comes with "3" Trucks and \$12,000 Parts Package, NOS, New in Boxes from Mack, Enough to Completely Restore "3" B81 Type Macks!

Big Discount - Call for Information  
 "No Reasonable Offer Refused"



Cheap Dump

**1990 Mack RD690S Triaxle Dump Truck**  
 300 H.P Mack, 7 Spd, Mack Trans, 44K Rears, 18K Front, PS, HC, Jake Brake, 410K Mi., PA State Inspected  
**\$25,900**

**JONES QUALITY PRE-OWNED BEST BUYS!**

PONTIAC • HONDA • GMC TRUCK • ACURA • USED CAR CENTER  
 1335 Manheim Pike • Lancaster, PA  
**717 394-0711**  
**QUALITY PRE-OWNED BEST BUYS!**

**Jones**

Prices based on straight sale. Tax and tags extra. Trades accepted at actual cash value. Must present this ad at time of purchase for sale price.



**2001 GMC K15 CREWCAB 4X4**  
 Auto, SLE, 6.0V8, Air, Loaded, MSRP \$35,085  
**SALE \$32,855**



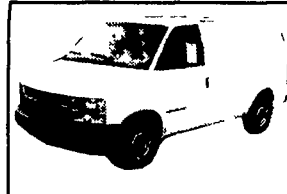
**2001 GMC ¾ YUKON XL 4X4** 8100  
 V8, Auto, SLE, Trailer Package & Much More #28492 List \$42,996  
**SALE \$40,755**



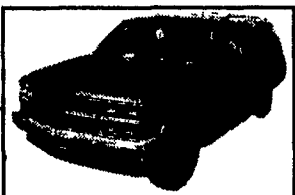
**2000 FORD F150 XCAB 4x4**  
 XLT, AT, Air, V8, Was \$23,900 #9761  
**SALE \$20,350**



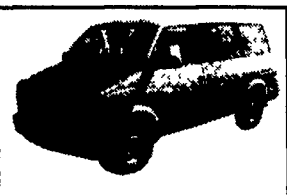
**NEW 2000 GMC K15 XCAB 4X4**  
 8' Bed, SLE, 5300 V8, Auto, Air, #29652 MSRP \$31,443  
**SALE \$24,850**



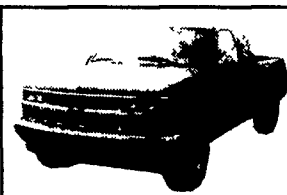
**1999 CHEV ASTRO AWD CARGO VAN**  
 Auto, Air, 4300 Vortec, Osha Net, Bin package #9678 Was \$18,400  
**SALE \$15,900**



**1999 CHEVROLET SUBURBAN 4X4**  
 LT, 350, AT, Loaded, #9704 Was \$27,000  
**SALE \$23,100**



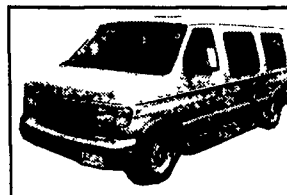
**1998 CHEV ASTRO PASSENGER**  
 AWD, 8 Pass, Auto, Air, V6, 64K Miles Was \$14,800 #9676  
**SALE \$11,900**



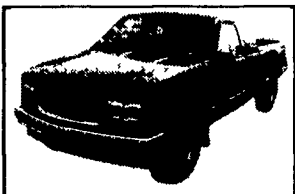
**1998 CHEV K15 XCAB 4X4**  
 Auto, Air, V8, Silverado, #9594, Was \$20,884  
**SALE \$18,900**



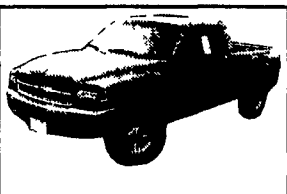
**1997 JEEP WRANGLER 4X4**  
 V6, Air, Sport, Hardtop, Sound Bar, Was \$16,900  
**SALE \$13,700**



**1997 FORD CONVERSION VAN**  
 Auto, Air, V8, Sharp, 33K Miles Was \$16,900 #9715  
**SALE \$14,800**



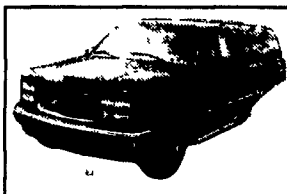
**1997 GMC K15 XCAB 4X4**  
 Auto, Air, SLE, 3 Door, #9712 Was \$20,800  
**SALE \$17,800**



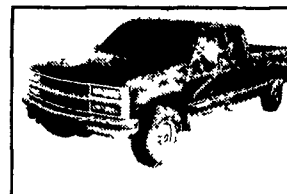
**1997 DODGE DAKOTA XCAB 4X4**  
 V8, AIR, SLT, 5 SPD Was \$17,000 #9709  
**SALE \$14,800**



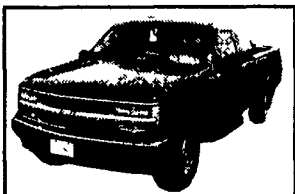
**1996 FORD E350 CARGO VAN**  
 Power Stroke Diesel, Auto, Air, #9699, Was \$12,500  
**SALE \$9,250**



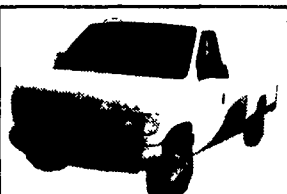
**1996 GMC SUBURBAN 4X4**  
 Auto, Air, 350, SLE, 41K Miles Was \$21,500 #9702  
**SALE \$18,500**



**1996 CHEV K25**  
 XCab, 4x4 Diesel, 6.5 Turbo AT, Air, Silverado Was \$17,500 #9771  
**SALE \$14,400**



**1995 CHEVY K15 XCAB 4X4**  
 Auto, Air, Silverado, 350 Was \$16,000 #9720  
**SALE \$13,000**



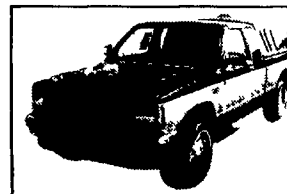
**1995 FORD E250 LONG CARGO VAN**  
 Auto, Air, V8 Was \$10,300 #9758  
**SALE \$7,150**



**1995 CHEV SUBURBAN**  
 4x4 350, Auto, Air, LS, 60K Miles #9520, Was \$20,700  
**SALE \$15,974**



**1995 GMC SONOMA XCAB 4x4**  
 AT, Air, V6, SLS Was \$12,500 #9767  
**SALE \$9,500**



**1987 CHEV. S10 XCAB 4X4**  
 Auto, Air, V6, 90K Miles, Was \$6,900  
**SALE \$4,400**