

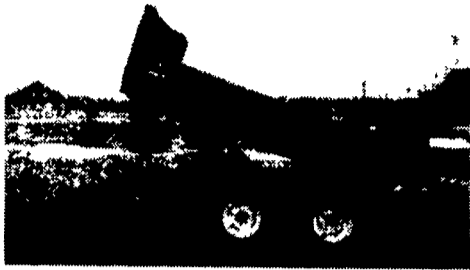
1989 Peterbilt 60 series, Detroit, 6" double bunk, 9 speed Fuller trans, air ride, cruise, AC, good rubber, good cond. \$12,500 obo 717-624-4342

Myers snowplow, model C-825, power angle, truck mounting assmy w/lights & controls, complete setup for 1-ton 4x4 truck, \$1950. 717-938-3517

Cat 1160 eng completely overhauled, new cam, shaft, crank turn, new bearing & pistons, no exchange necessary, \$4000. 717-938-3517

FARM DUMP TRAILERS

(Direct from the Manufacturer)



6-Ton Dump Trailer

- 10 ft. x 7 ft.
- Floating Tandem Axle
- 3 ft. Front, 3 ft. Tailgate & Grain Chute
- 16 in. Extendable Sides
- 10 ga. Floor & Sides
- 11Lx15 Flotation Tires
- 2-Way 4 in. x 24 in. Hydraulic Cylinder includes hoses

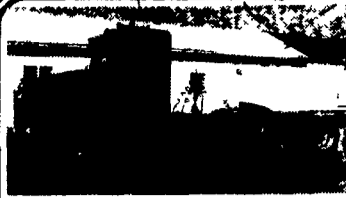
7-Ton Road Dump Trailer

- Fifth wheel or bumper type
- 16 ft. x 8 ft. deck 3 ft. front rack and pockets side & back
- D.C. hydraulic pump & battery mounted in locking tool box.
- 12 ton drop leg jack
- 10 ga. floor
- 6x3x3/16 tube main frame
- Sealed beam lighting
- 7000 lbs. per axle rating
- Electric brakes on both axle
- 16" tires on white spoked rims
- \$6400 U.S. delivered in Northeast U.S.A.

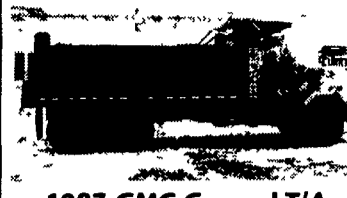


BERKELMAN'S WELDING

RR 7, AYLMEER, ONTARIO, CANADA N5H 2R6
(519) 765-4230



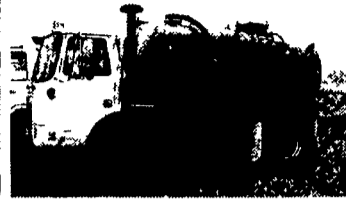
1997 Peterbilt Truck Tractor w/Wetline; Engine Cummins M-11 400 HP; 9 Sp. Trans.; Jake Brake; Air Ride Susp.; Nice Truck..... \$29,500



1987 GMC General T/A Steel Dump Truck
300 Detroit, 18K FA; 44K RA; Jake Brake; Very Clean One Owner..... **\$18,500**



1976 TEREX 72-31
10,000 lb. Forklift, 68" Forks, Hydraulic Spread, ROPS Cab, Low Hours, Clean Unit
\$14,500



1990 Volvo Vacuum Truck, New 2500 Gal. Tank, Massport Liquid Cooled Pump, Cummins L-10 270 HP, Allison Auto, Air Ride Susp., Nice Unit..... **\$39,500**



1979 IHC Paystar
4500 Gallon Manure Tanker, Engine 8V-92 Detroit Diesel 435HP; Trans. 8LL; P.S. 18K FA; 44K RA; Hedricksen Susp; NEW 4500 Gallon Manure Tank; 1/4" Steel Tank 76" Diameter; Air Operated Top Loading Hatch; Access Ladder; 24" Self Supporting Hydraulic Driven Impellor; Stress Free Hold Down; 2 Stage Unloading; Very Nice Unit..... **\$34,500**



1995 Komatsu WA250 Rubber Tired Wheel Loader S/N A65596; EROPS Cab; A/C; 2.5 Yard GP Bucket; 4 Wheel Drive Articulated; Hours 6900; Very Nice Unit..... **\$49,500**
Will Trade or Make Offer; Going To Sell

(2) 1987 GMC Tri-Axle Steel Dump Trucks; Detroit 6V-92, Auto Trans; Jake Brake; 18K FA; 44K RA; Dual Exhaust; Very Clean **\$22,500**
1993 Mack DM690 Tri-Axle Steel Dump Truck; 300 Mack Engine; 7 Sp. Trans.; 20K FA, 44K RA; Good Cond One Owner. **\$35,500**
1991 Mack RD688 Tri-Axle Steel Dump Truck; 350 Mack Engine; 18K FA; 40K RA; Double Frame; Very Nice..... **\$29,500**
1991 IHC Model 8200 S/A Steel Dump Truck, New 10' R/S Steel Dump Bed; Cummins L-10 270 HP, 9 Sp Trans, New Paint & Completely Gone Over, Very Nice. **\$19,500**
1994 Freightliner Stand up Double Bunk, Cummins 435HP, A/R ... **\$11,500**

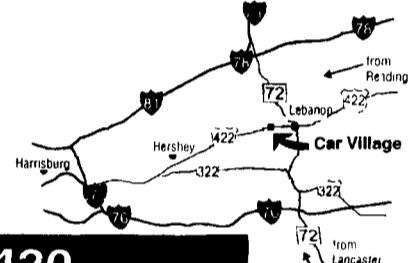
Curry Supply Co., Curryville, PA
1-800-345-2829

Business Hours:
Mon.-Fri. 9 to 9;
Sat. 9-4

2300 W. CUMBERLAND ST.
(Rt. 422)
LEBANON, PA 17042
(Across From Lebanon Valley Mall)

CAR VILLAGE

HEAVY DUTY TRUCKS



PHONE 717-274-2000 Toll Free 1-800-650-1420



4x4 CHASSIS CAB 91 CHEVY 5500 Ready & Waiting, 454 V8, AT, A/C, 137 W.B., 60" C.A.



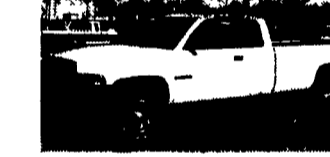
15,000 GVW 97 CHEVY H.D. 3500 DUMP TRUCK Only 24,000 Miles, High Output 6.5 Turbo Diesel, AT, 10 Foot Body, Tool Box



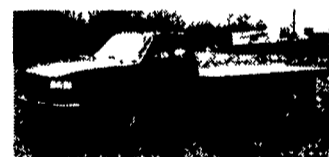
HEAVY CHEVY, 2000 CHEVY K2500 4 Wheel Drive, Remainder New Tk Warranty, Only 17,000 Miles, High Output 6.5 Turbo Diesel, 5 Sp., A/C, Tilt, Cruise, Power Locks & Windows, Limited Slip Axle, Tow Pkg.



\$15,900 96 FORD F250 4x4 Heavy Duty 3/4 Ton, Only 39,000 Miles, 460 V8, 5 Spd, A/C, 4-10 Gears, Great Tow Machine, Very Strong



5 SP CUMMINS 99 DODGE 4x4 24 Valve Cummins Diesel, 5 SP, A/C, Tow Package, Heavy 3/4 Ton, Nice Truck, Great Pullin Machine



12 FOOT FLATBED - 96 FORD SUPER DUTY Nice, Clean, Just The Way You Want It, 460 V8, AT, Heavy 15,000 GVW



4X4 CHASSIS CAB 2000 FORD SUPER DUTY Powerstroke Diesel, AT, A/C, 201 W.B., 117 C.A., Trailer Tow Pkg., Ready For Your Body!



1 TON DIESEL - 99 FORD F350 4x4 Powerstroke Turbo Diesel, 6 Sp. Trans., Trailer Tow Pkg., 3.73 Limited Slip Axle, Heavy 9,900 GVW, Alum Wheels, Ready To Go



5 SP CUMMINS 2000 DODGE 2500 QUAD CAB Vinyl Seat & Floor, 24 Valve Cummins Diesel, 5 Sp., A/C, Dana Axles, Limited Slip Axles, Only 27,000 Miles, Very Nice, Only \$28,900



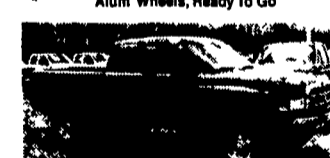
TOW IN STYLE 2000 FORD F350 4x4 CREW CAB DUALY It's A Beauty - Powerstroke, AT, A/C, Loaded, XLT Lariat, Aluminum Wheels & Lots More \$29,900



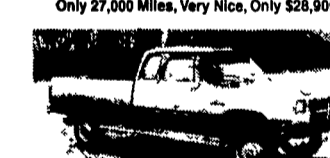
CAB OVER DUMPS 96 CHEVY W-4 We Have 3, Turbo Diesel, AT, 12 Foot Steel Beds, 14,250 GVW, Call For Details



CHASSIS CAB 2000 DODGE 3500 Short 137 W.B., 60" C.A., 24 Valve Cummins Diesel, AT, 4:10 Limited Slip, 4 Wheel Anti-Lock Brakes



GOOSENECK HITCH 99 DODGE 3500 QUAD CAB 4X4 Cummins Turbo Diesel, 5 Sp., A/C, Gooseneck & Class 3 Hitches, Chrome Wheels, A Real Good Looker, Only 32,000 Miles



CUMMINS DIESEL 93 DODGE 250 CLUB CAB 4 Wheel Drive, Very Nice Solid Tk, AT, A/C, Bench Seat, Lock Out Hubs, Excellent Body, Tow Pkg



SHORT BED DIESEL 98 DODGE 2500 Club Cab, 4x4, Diesel, AT, A/C, Tow Pkg., Looks Good, Runs Great



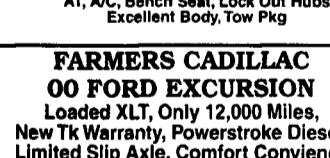
4x4 CHASSIS CAB 2000 FORD F450 - RARE 4x4 Heavy 15,000 GVW, 165 W.B., 84" C.A., Powerstroke Diesel, 5 Sp., A/C, 31,000 Miles, Remainder New Tk. Warranty



LIFT GATE 95 FORD E350 CUBE VAN Save Your Back, Lift It Up, Slide It In Powerstroke Diesel, AT, A/C, Real Clean, Only 60,000 Miles



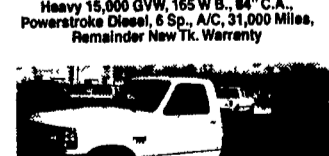
FARMERS CADILLAC 00 FORD EXCURSION Loaded XLT, Only 12,000 Miles, New Tk Warranty, Powerstroke Diesel, Limited Slip Axle, Comfort Convenience group, Running Boards, Power Drive Seat, Frt & Rear Heat & A/C, Aluminum Wheels, Third Row Seat. New Price.....\$43,600 Your Price.....\$34,900



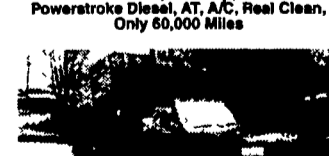
4 DOOR SHORTBED 97 FORD F250 XLT 4 Wheel Drive, The Nicest One Around, Only 38,000 Miles, Powerstroke Diesel, AT, Loaded, XLT, AC, Aluminum Wheels 40/20/40 Seats



CUMMINS DIESEL 97 DODGE 2500 4X4 Strong Cummins Turbo Diesel, AT, A/C, Tow Pkg., Chrome Wheels, Real Good Looker



4x4 FORD CHASSIS CAB 97 FORD F350 161 W.B., 84" C.A., Powerstroke Turbo Diesel, 5 SP Trans, Dual Tank



ONLY 10,000 MILES 97 FORD SUPER DUTY DUMP Like New, 460 V8, AT, Heavy Duty 15000 GVW If You Need A Dump Tk, This Is The One



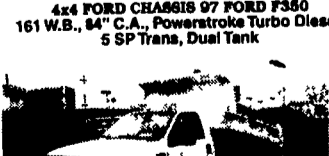
5 SP POWERSTROKE 96 FORD F-250 SUPER CAB 4WD, Probably The Nicest Anywhere, Only 34,000 Miles, XLT, 4:10 Gear, Dual Tanks, You Must See & Drive



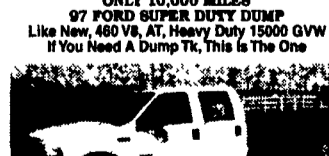
\$21,900 96 FORD F250 4 DOOR SHORTBED 4x4 Very Clean, Only 36,000 Miles, Very Strong 460 V8, AT, A/C, Loaded XLT, Aluminum Wheels, Tow Pkg., Mint Condition Inside & Out.



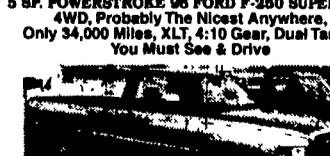
HEAVY DUTY SUPER CAB 4 WHEEL DRIVE 96 FORD F250 Real Nice, Only 47,000 Miles, Fuel Inj 351 V8, AT, A/C, Dual Tanks, New Insp., Serviced, Ready To Go \$18,900



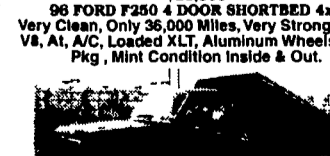
4X4 DUMP TRUCK - 99 FORD 450 DUMP Super Duty, Heavy 15,000 GVW, Powerstroke Turbo Diesel, AT, Nice Tk., Remainder Fact. Warranty



550 CREW CAB CHASSIS 4 WHEEL DRIVE 1999 FORD Very Rare Find, XLT Powerstroke, Auto, 17,500 GVW, Trailer Tow Mirrors, New Truck Warranty



2 WHEEL DRIVE 98 DODGE 2500 Heavy Duty 3/4 Ton Cummins Turbo Diesel, AT, A/C, Drives Great, Great Fuel Mileage



FARM TRUCK 83 FORD F250 4x4 Dump Body, Diesel, AT, \$2,900