

## USED TRAILERS

**JIM MARINO**  
USED TRAILER MANAGER  
717-492-1806



**Great Dane Trailers**

1831 AUCTION ROAD  
MANHEIM, PA 17545

www.lancaster@greatdanetrailers.com

'95 Chevy 2500 HD 3/4 ton pickup, 350 Ft, 5 spd, PS, PB, air, am-fm cass., 373 ratio, limited slip, 8,600 GVW, 78,000 one owner miles, new radiats, excellent condition, \$8,975. 717-733-2873

1989 Dodge Ram 350 4x4 dump dsl, 5-spd, 8' Fisher HD snow plow, good for landscapers, \$8995. 717/993-6882



### 1995 GVM Sprayer

350 Ford, 540 Gal. Tank, 50' Booms, Foam Marker, Washout Tank, 440 Raven Computer System, Creek Fill Pump, 35,000 Miles  
**1-888-710-2178**

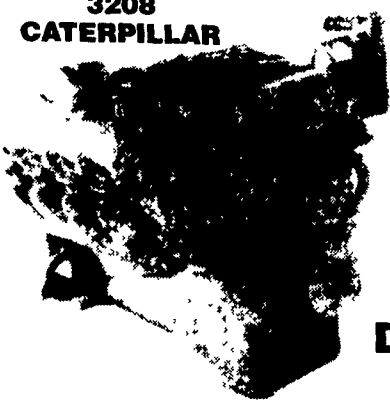
### New Open Car Trailer \$1,499

7,000 lbs. GVW, elect. brakes, with ramps that slide out from under diamond plate steel runways

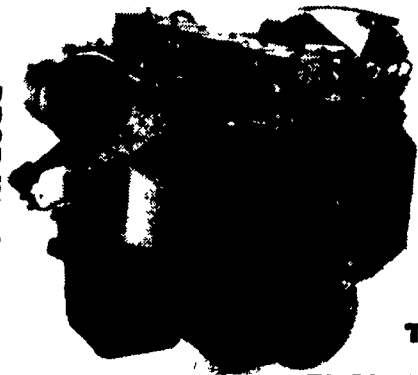
**302/368-9534**

Newark, Delaware

### 3208 CATERPILLAR



### 5.9 CUMMINS B-SERIES



DROPP-IN DIESELS

ENGINES AVAILABLE

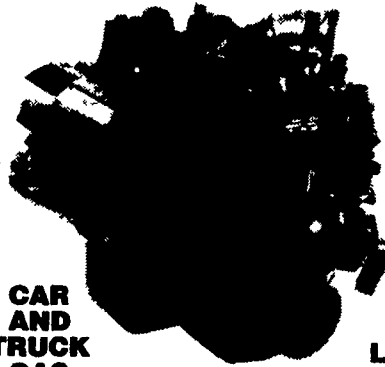
## ENGINE TRANSMISSION WAREHOUSE, Inc.

2857 Peters Mtn. Rd.  
Halifax, PA 17032

**1-800-507-4359**

**WE ARE YOUR GAS AND DIESEL ENGINE SUPPLIER**  
UP TO 24 MO., 200,000 MI. WARRANTY

### 6.9 DIESELS 7.3 POWER STROKE



CAR AND TRUCK GAS ENGINES AVAILABLE

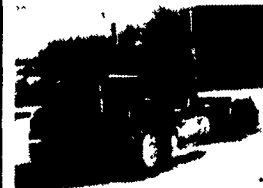
### GM 6.5 DROP IN



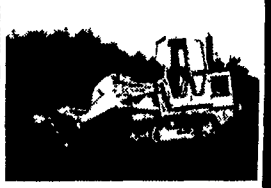
SHORT AND LONG BLOCKS

CALL FOR PRICES

DT-466 INT.



**85 Mack Superliner**  
V8, 9 Speed Rebuilt, Alum. Wheels, Good Rubber  
**\$14,000**



**Cat 953 Ldr.,**  
Low Hrs., Very Good Condition  
**\$38,000**



**93 Chevy HD 3500**  
11 Ft. Dump Tool Box, Fuel Tank - New Engine  
**\$12,000**

**No Calls After 9:00 P.M.**

**410-557-9559**

# AL HAMILTON USED TRUCK SALES

P.O. Box 157, 55 Doe Run Road, Manheim, PA 17545

**Phone: 717-665-7145 Fax: 717-665-2137**

**"CLEANEST TRUCKS AROUND"**



**'87 FORD LN8000**  
New 11' Dump, 7.8L Ford Diesel 240 HP, 6 Spd. Trans., Air Brakes, Custom Int., A/C, 33,000 G.V.W.  
**\$20,500**



**'94 FORD F-600 14' Dump,**  
5.9 Cummins, 5 Spd. Trans, 2 Spd. Rear, Hyd. Brakes, A/C, 25,500 GVW  
**\$18,500**



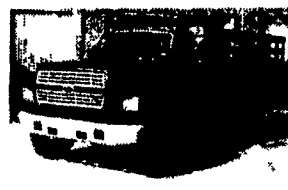
**'95 FORD LNT 8000 C&C**  
8.3 Cummins 225 HP, 9 Spd Trans., Air Brakes, A/C, Custom Int., 260 WB, 192 CA, 58 GVW  
**\$28,500**



**'91 INT. 4600**  
8' Dump Bed, 7.3L-170 HP, 5 Spd. Trans., 2 Spd. Rear, Air Brakes, Pintle Hook, 26,000 GVW  
**\$18,500**



**'94 FORD LNT 9000 C&C**  
L-10 Cummins 280 HP, 9 Spd Trans, Air Brakes, A/C, 264 WB, 192" C A, 58,000 GVW  
**\$30,500**



**'93 FORD F-600**  
14' Flat Dump, 5.9 Cummins, 160 HP, 5 Spd. Trans., Hyd. Brakes, A/C, 25,500 GVW  
**\$17,500**



**NEW 10' DUMP BODY**  
Complete w/Hoist & Pump  
**\$4,500**



**'87 INT S-1900 C&C**  
DT-466, 215 HP, 7-Spd. Trans., Air Brakes, A/C, 138 C.A., 206 WB, 32,800 GVW  
**\$14,500**



**'93 FORD LN8000**  
24' Morgan Body, 91" Door Opening, 8.3 Cummins, 210 HP, 6 Spd Trans, Custom Int, A/C, 33,000 GVW  
**\$21,500**



**'93 FORD LN8000**  
C&C, 8.3 Cummins 210 HP, 6 Spd Trans, Custom Int, A/C, 192 C.A., 256 W.B., 33,000 G.V.W  
**\$18,500**



**'94 FORD LN8000**  
New 10' Dump, 8.3 Cummins 210 HP, 6 Spd. Trans., Air Brakes, Custom Int., 35,000 GVW  
**\$27,500**



**'73 GMC 6000**  
22' Rollback, 350 Gas, 5 Spd. Trans, 2 Spd. Rear, Hyd. Brakes, 26,000 GVW  
**\$9,500**



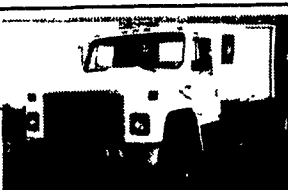
**'94 FORD LNT 8000**  
26' Van Body, Lift Gate, Side Door, 8.3 Cummins, 225 HP, 9-Spd Trans, Custom Cab, A/C, 58,000 GVW  
**\$31,500**



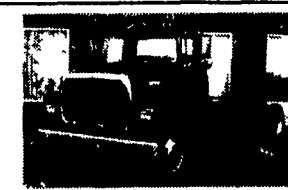
**'95 INT. 4900 C&C**  
DT-466, 210 HP, 6-Spd Trans, Custom Int, A/C, 254" WB, 185 C A, Air Brakes, 35,000 GVW  
**\$20,500**



**'94 FORD F600 C&C**  
5.9 Cummins, 5 Spd Trans, 2 Spd Rear, Hyd Brakes, A/C, 174 W B, 108 CA, 25,500 GVW  
**\$14,500**



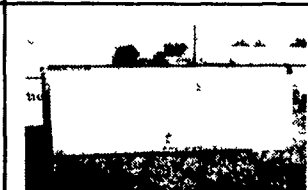
**'81 INT 1700**  
345 Gas, 5 Spd. Trans., 2 Spd Rear, Hyd. Brakes, 138" C.A., 218" W.B., 25,000 GVW  
**\$6,000**



**'94 FORD LN8000 C&C**  
8.3 Cummins, 6 Spd. Trans., 222" W.B., 156" CA, 35,000 GVW  
**\$19,500**



**'95 FORD F8000 C&C 8.3**  
Cummins, 225 HP, 5 Spd. Trans., 2 Spd. Rear, Air Brakes, Custom Int, A/C, 214 WB, 144 CA, 33,000 GVW, 17,000 Miles  
**\$28,500**



**USED VAN BODIES**  
16'-26'  
Starting At \$2,000



**'93 INT. 4900 C&C**  
DT-466 6 Spd. Trans, Custom Int A/C, 186 CA, 254 WB  
**\$17,500**

85 GMC 7000 20' Stake Body w/Sides, Dsl, 5+2, Clean, No Rust, No CDL Req'd. 410-836-2905

83 Dodge 4x4 150 Custom, short box, Myers snow plow, \$2100. 610-589-1572

1992 Ford F250 4x4 XL, good condition, \$5500. 304-725-5018

79 Autocor manure truck, vacuum fill & pressure unload or top fill. 3800 gal. tank. \$8,590, 717-626-8191.

1972 Mack tandem axle 14' steel dump. 717-624-2592.

'96 IH 9400 tandem axle, Jerr-Dan 26' roll back, 20,000# winch, excellent condition, \$38,500. 301-371-9346

'99 Custom trailer, 16', elec brake, \$2300. 301-371-9346

'77 Chevy Silverado, 1/2 ton pickup, 350, 2WD, auto, 8' bed w/cap, fair cond., \$1500 obo. 717-872-6747

## S.L. HESS & SONS, Inc.

### Good Used Trailers

- 24x6"7"x6"6" tall, Four Star stock GN
- 20x7x6"6" tall Featherlite stock GN
- 15x7x7 tall Four Star 3H GN
- 18x7x6-1/2" tall Four Star stock w/Dr.
- 18x7x7 tall Four Star 3H GN
- Diamond D 14x6x6-1/2 tall B.P. stock steel

**1-800-332-4377**  
1795 S. High St., Harrisonburg, VA 22801