

**Green Dragon Hay**

Ephrata, Pa.  
Report Supplied By Auction  
Friday, March 16, 2001  
Hay—Straw—Grain  
69 LOAD TOTAL.  
MIXED HAY. 34 LOTS, 40.00-190.00.  
ALFALFA: 9 LOTS, 40.00-162.00.  
TIMOTHY. 10 LOTS, 57.00-115.00.  
STRAW: 8 LOTS, 80.00-122.00.  
ORCHARDGRASS: 3 LOTS, 48.00, 50.00 AND 115.00.  
EAR CORN: 70.00.  
BALEAGE: 18.00 BALE.  
STUBBLE HAY: 100.00.  
FIREWOOD: 20.00 AND 41.00 LOAD.

**Shippensburg Hay Auction**

Shippensburg, Pa.  
Report Supplied By Auction  
March 17 and 20, 2001  
Hay—Straw—Grain  
81 LOADS.  
ALFALFA: 28.00-150.00.  
MIXED HAY: 30.00-140.00  
TIMOTHY: 30.00-130.00  
CLOVER: 82.00-102.00.  
BROMEGRASS: 20.00-72.50.  
ORCHARDGRASS: 60.00-97.00.  
STRAW: 47.50-127.50.  
EAR CORN: 55.00-94.00.  
OATS: 1.00-1.60 BU.  
WOOD: 28.00-125.00 PICK-UP LOADS.

**Middleburg Livestock Auction**

Middleburg, Pa.  
Tuesday, March 20, 2001  
Report Supplied By USDA  
CATTLE 393...(PDA)..Compared with last week's sale...(Supply included 175 steers and heifers, 134 cows, 20 bulls and 61 feeder cattle..steers 2.00 to 3.00 lower, heifers and bulls 2.00 lower  
STEERS High Choice and Prime 2-4 1225-1430 lbs 80.75-82.75, Choice 2-3 1115-1450 lbs 76.75-81.25, Select 1-3 70.00-76.75 with a few up to 78.00, Standard 1-2 57.00-67.00.  
HOLSTEIN STEERS: few High Choice and Prime 2-3 1435-1530 lbs 72.75-74.75, Choice 2-3 1210-1600 lbs 63.75-69.75, Select 1-2 59.00-63.25, Standard 1-2 45.00-53.50.  
HEIFERS: few High Choice and Prime 2-4 1325-1430 lbs 81.25-83.00, Choice 2-4 1000-1430 lbs 74.75-81.00, Select 1-3 69.50-76.00, few Standard 1-2 55.00-67.00.  
COWS: Breakers 75-80% lean 44.00-48.25, Boners 80-85% lean 38.50-45.00.

Lean 85-90% lean 35.00-42.50. Shells 34.00 and down.  
BULLS: Yield Grade 1 1160-2090 lbs 53.75-60.00, Yield Grade 2 1070-2245 lbs 47.50-54.25.  
FEEDER CATTLE STEERS. few Medium and Large 1 395-480 lbs 93.00-106.00, 640-760 lbs 77.00-81.00, few Medium and Large 2 285-305 lbs 96.00-106.00; HEIFERS Medium and Large 1 290-455 lbs 89.00-94.00, 490-660 lbs 75.00-80.00, Medium and Large 2 360-435 lbs 79.00-90.00, few 560-580 lbs 72.00-75.00; BULLS: one Large 1 450 lbs 104.00, 545-600 lbs 75.00-83.00, 665-710 lbs 64.00-86.00, Medium and Large 2 285-425 lbs 70.00-84.00, 650-685 lbs 53.00-72.00.  
CALVES 228...VEALERS: Standard and Good 70-100 lbs 42.00-55.00, Utility 55-70 lbs 10.00-22.50.  
FARM CALVES: Holstein bulls 5.00 higher, Holstein heifers steady..No 1 Holstein bulls 85-120 lbs 150.00-195.00 mostly 165.00-185.00, 70-80 lbs 110.00-157.00, No 2 75-120 lbs 80.00-165.00; No 1 Holstein heifers 85-110 lbs 290.00-390.00, No 2 70-130 lbs 105.00-250.00.  
Beef type bulls and heifers 75-115 lbs 105.00-190.00.  
HOGS 228...Barrows and gilts 1.00 to 2.00 lower, sows steady to .50 higher.  
BARROWS AND GILTS 49-54% lean 230-260 lbs 45.00-46.25, 45-50% lean 220-285 lbs 43.25-45.50, few 40-45% lean 295-300 lbs 38.50-42.25.  
SOWS US 1-3 300-475 lbs 29.50-35.00, 500-605 lbs 33.50-36.25, Medium 350-450 lbs 10.00-18.00.

BOARS: 295-720 lbs 13.25-15.75, one 220 lbs 32.00.  
FEEDER PIGS 21...SLAUGHTER: Utility 60-115 lbs 14.50-18.00 per cwt.  
SHEEP 18...SLAUGHTER LAMBS: Choice 80-115 lbs 88.00-109.00, few Good and Choice 65-95 lbs 80.00-87.00.  
NEW CROP LAMBS: few Choice 65-95 lbs 80.00-87.00.  
SLAUGHTER SHEEP: few 40.00-43.00.  
GOATS 8...(All sold by the head). Couple Large Billies 92.00 & 118.00, few Medium 65.00, one Large Nanny 90.00, couple Medium 66.00 & 78.00.

**Livestock Cooperative Auction Market Of North Jersey**

Hackettstown, N.J.  
Report Supplied by Auction  
Tuesday, March 20, 2001  
CALVES .03-3.80.  
COWS .10-.50%.  
EASY COWS .20-.33%.  
FEEDERS 300-600 LBS. .40-1.12.  
HEIFERS .28%-.62.  
BULLS 38%-.68.  
STEERS 42-.75%.  
HOGS .30-.45.  
ROASTING PIGS EA. 27.00-29.00.  
BOARS .10.  
SOWS .10-.24%.  
SHEEP 25-.61.  
LAMBS EA. 21.00-86.00.  
LAMBS PER LB. .50-1.50  
GOATS EA 55.00-142.50  
KIDS EA 30.00-95.00  
HIDES EA. 25.00-42.00  
TOTAL: 655 HEAD

**Belleville Hay**

Belleville, Pa.  
Report Supplied By Auction  
Wednesday, March 21, 2001  
Hay—Straw—Grain  
ALFALFA HAY: 70.00-165.00.  
MIXED HAY: 50.00-162.50.  
STRAW: 110.00.

**Dewart Hay**

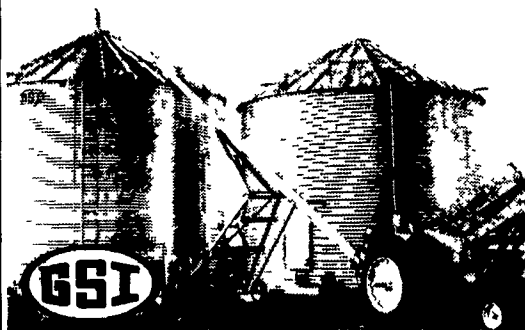
Dewart, Pa.  
Report Supplied By Auction  
Monday, March 19, 2001  
HAY: 43 LOTS, 42.50-120.00.  
STRAW: 7 LOTS, 75.00-97.50.  
WOOD: 4 LOTS 27.50-50.00 LOAD.  
CORN: 2 LOTS, 75.00 AND 80.00.  
OATS: 6 LOTS, 1.60-2.25 BU.

**automatic farm systems**  
808 E. Evergreen Road, Lebanon, PA 17042  
Phone: 717-274-5333  
e-mail: info@afson.com

**GSI EARLY ORDER PROGRAM**

Special Winter Discounts on Storage Bins & Dryers thru March 30, 2001 - Call For Details

**ON FARM STORAGE FOR MAXIMUM PROFITS**

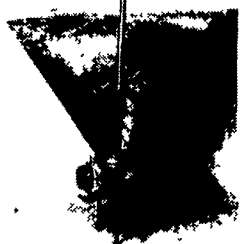


- FARM BINS
- GALVANIZED FANS AND HEATERS
- TOP DRY SYSTEMS
- GRAIN DRYERS
- HOPPER BOTTOM TANKS
- COMMERCIAL FLAT BOTTOM
- FLEX-FLO FEED SYSTEMS
- SAFETY ACCESS EQUIPMENT

We Supply Expert Installation and Service  
Check Our Prices Before You Buy

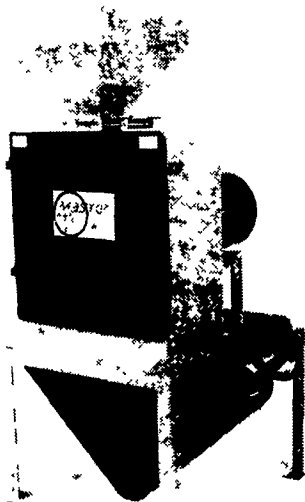
**GSI FEED BINS**

Automatic Farm System  
**BIN UNLOADER**  
Ensures Dense Material Flow



Expert Installation

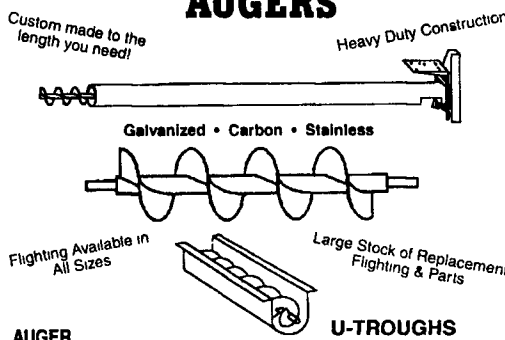
**HAMMER MILLS for Grinding High Moisture & Dry Grains**



Grinds Finer than Roller Mills.

Call Us For Your Nearest Dealer!

**CUSTOM MADE AUGERS**



- AUGER INSTALLATIONS**
- ✓ In feedlots
  - ✓ In drying systems
  - ✓ Commercial applications
  - ✓ At feedmills or elevators
  - ✓ Around poultry & dairy barns
  - ✓ At your grain bins or bulk tanks
  - ✓ Replacement Augers for feed mixers and farm equipment

**Standard Auger Specifications**

	4"	6"	8"	10"
Tube Gauge	16	14	14	12
Flight Thickness Bu/Hr	3/16"	3/16"	3/16"	1/4"
RPM	250	850	2000	3000
	431	431	431	431

Call Us For Custom Specifications

**McElwee's Livestock**

Home of Shippensburg Cownet  
3 Locations To Serve You

**Newburg**

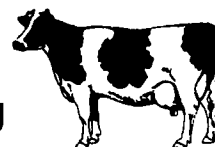
Mon. 9-4, Thurs. 9-2  
**(717) 423-6869**

**Woodsboro, MD**

Tues. 10-2  
**(301) 845-6232**

**Chambersburg**

Wed. 9-3  
**(717) 267-3321**



Receiving All Cows, Bulls, Steers, Calves  
Call For Daily Price Quotes

**WHITEWASHING with ADVANTAGE FARM WHITE**

- DRIES WHITE • NO WET FLOORS
- IS COMPATIBLE WITH DISINFECTANT AND FLY SPRAYS
- DOES NOT RUB OFF EASILY
- WASHES OFF WINDOWS & PIPELINES EASILY



10% CASH Discount through Month of March 2001 on Total Bill

**BARN CLEANING SERVICE AVAILABLE WITH COMPRESSED AIR**

To have your barn cleaned with air it will clean off dust, cob webs & lots of the old lime  
This will keep your barn looking cleaner & whiter longer

**CALL US ABOUT ON THE FARM FLY CONTROL**

Serving Southeastern Pa. And More

**BEITZEL'S SPRAYING**

Witmer, PA 17585 717-392-7227 or  
Toll Free 1-800-727-7228 7:00 AM to 5:00 PM  
CERTIFIED COMMERCIAL APPLICATORS  
LICENSED 37 YEARS EXPERIENCE INSURED

5 Trucks For Air Cleaning And Whitewashing  
RADIO DISPATCHED TRUCKS  
Barn Spraying Is Our Business, not a sideline.  
Spraying Since 1961

**FOR SALE**

- Good Used - 10 Hp., 3 ph., 1750 RPM Centrifugal drying. Fans w/ controls \$850 each
- New GSI 18 ft. x 8 Ring, 45 Hopper Tank with Ladder, 5400 bu Capacity

**WE CUSTOM FABRICATE**  
Painted, Galvanized and Stainless Steel  
Fabrication, Feed Bins, Feeders, Hoppers,  
Covers, Dump Pits, Augers, and Control Systems  
to Automate Your Operation.