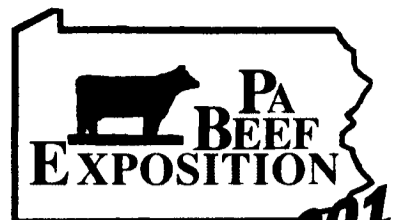
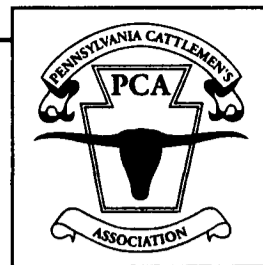


The 2001 Pennsylvania Beef Expo Junior events will be dedicated to Hoss's Steak and Sea House for their continued support. Pictured from left are: Bill Reed, PCA member and volunteer; Glenn Eberly, Beef Expo chairman; Holly Marshall, Beef Council industry relations; Bill McCoy, PCA president.



March 30 to April 1, 2001  
At The Penn State Ag Arena

## 2001 Beef Quiz Bowl

UNIVERSITY PARK (Centre Co.) — The 2001 Pennsylvania Beef Expo Quiz Bowl will be conducted March 31. Any team of four junior cattlemen, 4-H or FFA members is invited to compete. The competition will be divided into two divisions: 14 to 21 (seniors) and 8 to 13 (juniors). All four team members must be of the same division with the exception that juniors may compete on the senior team, but seniors may not compete on a junior team.

The contest will have two parts. The first will be a series of questions directed to each team member individually. Each team member will be given four questions to answer for a total of 16 questions per team. Part two will involve 16 toss up questions where the question will be read and anyone from either team will have the opportunity to buzz in to answer the question.

If the question is not answered correctly, the opposing team will have the opportunity to answer the question. There will be a time limit on each question as well as on bonus questions to be given when three different team members answer questions correctly. Bonus questions must be answered by the team captain but can be arrived at by the entire team after a 20 second conference. There is no limit to the number of bonus questions to be given.

Questions for the most part, will be obtained from *Beef Today*, *BEEF Magazine*, *Keystone Cattleman* and *Lancaster Farming*, but may also be taken from various beef publications of the National Cattlemen's Beef Association, Penn State University, Pennsylvania Cattlemen's Association and state breed organizations.

Topics will include: nutrition, genetics, reproduction, animal health, marketing and promotion, and breeds as well as the possibility of state and national organizations and people in the beef industry. State specific questions will include but not be limited to the state of Pennsylvania.

The committee reserves the right to make adjustments to the contest in order to conduct a successful quiz bowl competition. Call the Expo Junior Show Office with any questions at (717) 336-0553.



## Beef Skillathon At Pa. Beef Expo

UNIVERSITY PARK (Centre Co.) — Junior cattlemen, test your knowledge of the beef industry in the Beef Skillathon on Saturday, March 31 at the Pennsylvania Beef Expo, 8-10 a.m. in the Penn State Ag Arena.

A skillathon is an excellent opportunity for the junior cattlemen to become involved in challenging learn-by-doing activities. The competition will incorporate project skills and industry basics in a series of mini-learning stations with facilitators at each station.

The station facilitators will allow participants to test their own knowledge and abilities in areas such as identification of beef breeds, retail cuts, feed ingredients, quality assurance practices, food safety, EPD evaluations, and management decision making.

Each participant will have about five to 10 minutes at each station where he/she will be tested by multiple choice, matching or one on one communication with the station facilitator. The

entire contest will take approximately 35 to 45 minutes to complete.

This contest is a great way to test your beef industry knowledge and learn important skills needed to be a successful cattle person.

### Eligibility

- Individuals must be a Pennsylvania Junior Cattlemen's Association Member. 4-H and FFA members may join the PJCA for a registration fee of \$5. This membership fee may be paid at the time of the contest registration.

- Registration will require name, address, and birth date.

- Each exhibitor may compete one time.

- Team members must register at the same time and compete simultaneously.

- Schools, clubs, and counties entering more than one team must also register and compete simultaneously.

The senior division includes competitors 16- to 21-years-old;

and intermediates 12- to 15-years-old; and juniors 8- to 11-years-old.

County, club or school teams consisting of four members in one division are invited to participate. Awards will be announced immediately before the Beef Quiz Bowl Finals in the arena.

Registration will take place on site just prior to the contest. Registration sheets are needed only at the contest site. For large groups, it would be most helpful for a leader or group organizer to register the group at the PCA Headquarters table in the Ag Arena. Signs will be posted.

For more information/registration, contact: Elizabeth Smith, Beef Skillathon, 1600 West Route 897, Denver, PA 17517, (717) 336-0553.

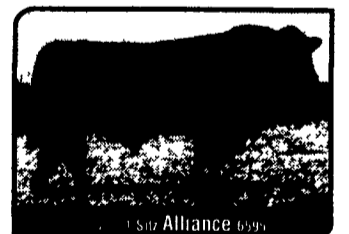
## Conception to Consumption Genetics

With Full Service AI Programs

**Genetics** that provide the kind of performance and profitability that you would only expect from PROGENY PROVEN SIRES. Your Genex Representative can help you choose the best sires for your program.



McC Bushwacker 41-93



1512 Alliance 6999

### Synchronization

Your Genex Representative can lend a helping hand with the implementation of mass synchronization and consultation on a method that will work for you.

Feed MGA	1	2	3	4	5	6	7	8	9	10
Feed MGA	11	12	13	14	15	16	17	18	19	20
	21	22	23	24	25	26	27	28	29	30
	31	32	33	34	35	36	37	38	39	40
	41	42	43	44	45	46	47	48	49	50
	51	52	53	54	55	56	57	58	59	60
	61	62	63	64	65	66	67	68	69	70
	71	72	73	74	75	76	77	78	79	80
	81	82	83	84	85	86	87	88	89	90
	91	92	93	94	95	96	97	98	99	100

MGA-Lut Sync Method

### Professional Technician Service

provided by your local Genex Representative. Our breeding accuracy will guarantee you the best conception rates in the business.

Dave Zimmerman District Sales Manager 1-888-297-9424 ext. 230  
Bob Stratton, New Jersey and Eastern PA 1-888-297-9424 ext. 231  
Larry Swartz, Southeast PA and Delaware 1-888-297-9424 ext. 239  
Bob Burry, Western PA and Ohio 1-888-297-9424 ext. 250



**Genex**  
Cooperative, Inc.

A subsidiary of Cooperative Resources International  
www.cri.net.com  
Shawano, WI • Phone 888/333-1783

References available upon request

Mercer Livestock Market  
Rt. 19 Mercer, PA

### Second Annual Beef Expo and Sale

Friday, May 4 @ 9:00 A.M.

## ALL FAT CATTLE PRODUCERS WELCOME

We Will Spend 10 to 15 Minutes At Each Consignor's Pen, With Consignor, To Review And Make Constructive Comments About The Cattle

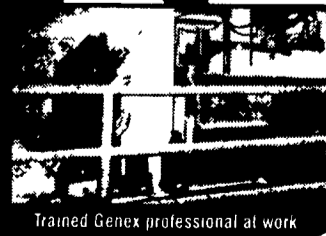
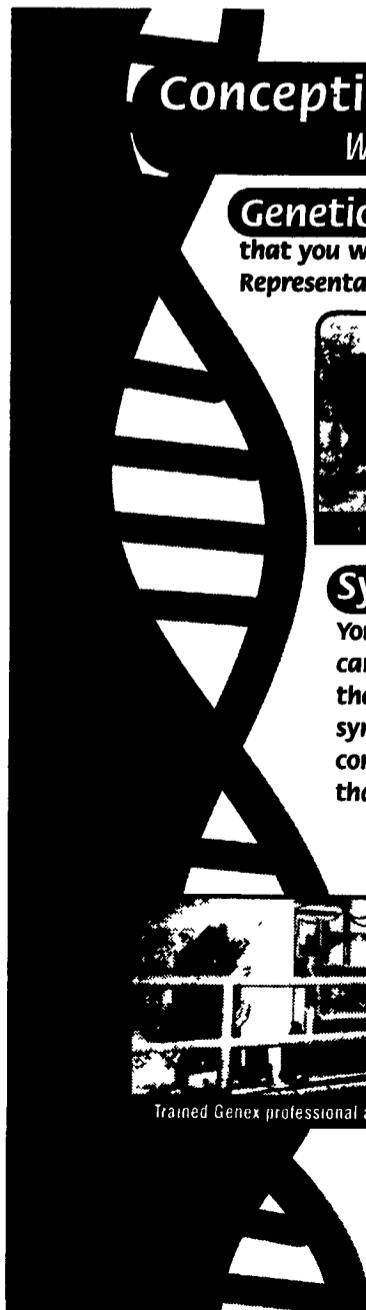
**CATTLE WILL BE EVALUATED IN SALE RING**

**QUESTION AND ANSWER PERIOD ONE HOUR BEFORE SALE TIME**

**FAT CATTLE AUCTION AT ONE P.M. SHARP**

Everyone is encouraged to consign  
This is not a show. This is an expo!  
Farmers, producers, feed lots, or someone with one finished animal. All welcome.

For More Information Call 1-800-760-6994 OR  
VISIT US ON THE WEB AT [www.mercerlivestock.com](http://www.mercerlivestock.com)  
e-mail [trish@mercerlivestock.com](mailto:trish@mercerlivestock.com)



Trained Genex professional at work