

Eighty-Four Livestock Auction

Eighty-Four, Pa.
Monday, March 19, 2001
Report Supplied By USDA

CATTLE 175...(PDA)..Compared with last week's sale..cows steady.

STEERS: couple Standard 1-2 55.00 & 59.00

HEIFERS: Standard 1-2 53.00-63.00.

COWS: Breakers 75-80% lean 40.00-45.50, Boners 80-85% lean 38.00-42.50, Lean 85-90% lean 34.00-39.00. Shells 33.00 and down.

BULLS: Yield Grade 1 1080-2120 lbs 56.00-64.00. Yield Grade 2 1095-2150 lbs 44.00-53.00.

FEEDER CATTLE STEERS few Medium and Large 1 355-450 lbs 87.50-107.00, 615-675 lbs 80.00-85.00, few Medium and Large 2 670-810 lbs 65.50-79.00, HEIFERS few Medium and Large 1 340-535 lbs 80.00-89.00, Medium and Large 2 325-500 lbs 71.00-79.00, 510-825 lbs 63.00-75.00, **BULLS.** few Medium and Large 2 345-825 lbs 63.00-82.00

CALVES 145. (All calves sold per cwt) **VEALERS** couple Choice 205-265 lbs 90.00 & 93.00, Standard and Good 95-120 lbs 50.00-85.00, 65-85 lbs 45.00-80.00, Utility 55-75 lbs 30.00-50.00

FARM CALVES Holstein bulls steady to 10.00 higher No 1 Holstein bulls 90-125 lbs 135.00-175.00, 80-85 lbs 140.00-170.00, No 2 75-110 lbs 95.00-130.00, No 1 Holstein heifers 90-115 lbs 270.00-360.00, No 2 80-105 lbs 135.00-245.00

Beef type bulls and heifers 80-120 lbs 117.50-190.00.

HOGS 21 **BARROWS AND GILTS** 45-50% lean 250-295 lbs 42.00-49.25, lightweights 40-45% lean 125-210 lbs 36.50-41.00

SOWS: US 1-3 340-575 lbs 20.00-32.50.

BOARS: 235-435 lbs 10.00-19.00.

FEEDER PIGS 0...NO MARKET

TEST!

SHEEP 65...**SLAUGHTER LAMBS:** Choice 55-75 lbs 123.00-128.00, 60-95 lbs 105.00-117.00, Good and Choice 110-155 lbs 65.00-78.00.

SLAUGHTER SHEEP: 24.00-64.00.

GOATS 18...(All sold by the head).

One Large Billy 105.00, Medium 56.00-69.00, one Large Nanny 68.00, Medium 22.00-42.00, Large Kids 26.00-44.00, Small 20.00-22.00.

Okla. National Stockyards

Oklahoma City, OK

March 21, 2001

Report Supplied By USDA

Compared to last week: Feeder cattle steady Stocker cattle and calves steady, instances 2.00 higher Demand good for feeders, demand continues very good for stockers and calves Best demand continues to center on stockers over 500 lbs Feeder cattle flesh is on the increase as more cattle move off wheat fields. Feeder cattle in medium to moderate wheat flesh Supply continues to include an unusually large number of thin stockers for mid-March. Quality average to attractive Weigh-ups average. Slaughter cows steady. Slaughter bulls 50 cents lower. Packer demand good. Demand especially good for thin cows headed to graze-out. Total of 320 cows and bulls sold with 40 percent going to packers

Receipts this week 9125; last week 12,549, last year 8960

Supply consisted of 61 percent yearlings over 600 lbs, 36 percent calves and light yearlings under 600 lbs. 3 percent cows and bulls.

Heifers comprised 36 percent of feeder and calf supply.

Prices follow with weighted average weight and price in parenthesis. Feeder Steers: Medium and Large 1 300-400 lbs (350 lb) 120.00-131.50 (126.32); 400-500 lbs (450 lbs) 111.00-117.50, thin 117.00-125.75 (116.04); 500-600 lbs (550 lbs) 101.00-112.50 (108.87); 600-650 lbs (630

lbs) 94.50-102.50 (98.36), thin (611 lbs) 103.75-108.00 (105.90); 650-700 lbs (673 lbs) 91.50-97.50 (94.35); 700-750 lbs (726 lbs) 86.00-92.50 (89.80); 750-800 lbs (768 lbs) 84.50-88.75 (86.87); 800-850 lbs (820 lbs) 81.50-86.75 (84.43); 850-900 lbs (869 lb) 79.00-83.25 (81.14); 900-950 lbs (927 lbs) 78.75-81.00 (80.50).

Holsteins: Large 3 350-475 lbs 83.00-83.25; 575 lbs 81.00; 675- 750 lbs 70.00-72.00

Feeder Heifers: Medium and Large 1 350-400 lbs (350 lbs) 100.00- 112.00, thin 110.50-115.00 (108.24); 400-500 lbs (450 lbs) 99.00- 108.50, fleshy 94.00-97.00 (104.41), 500-600 lbs (550 lbs) 93.00-102.50, thin 95.00-105.25 (97.00); 600-650 lbs (627 lbs) 86.00-95.50 (90.18); 650-700 lbs (676 lbs) 84.75-89.00, fleshy 82.00-84.75 (85.68); 700-750 lbs (718 lbs) 83.00-85.00 (84.24), 750-800 lbs (772 lbs) 79.50- 82.50 (80.99); few 800-900 lbs (850 lbs) 74.25-80.25 (77.59).

Slaughter Cows. Head %Lean Weight Average Dress High Dress Low Dress Breaker 3 75-80% 1100-1450 44.00 47.50 43.50 Boner 39 80-85% 950-1350 43.00-46.25 46.00-50.00 40.00-44.00 Lean 57 85-90% 850-1300 41.00-44.50 44.00-45.50 37.50-41.00 Light 11 85-90% 650-850 37.75-41.50 32.00-35.00

Slaughter Bulls: Head Weight Average Dress High Dress Low Dress Yield Grade 1-2 16 1300-2100 51.50-55.00 57.00-59.50 49.00-53.00

Estimated dressed cost at Oklahoma National Stockyards: Lean 91.70, light carcasses 86.55; Boners 90.25; Breakers 86.60. Bulls 98.65.

Replacement Cows: Pretested for bangs, pregnancy, and age Medium and Large 1 Age Weight Months Bred Quality Price 4-6 yr old 1000-1250 5-8 months Avg quality 665.00-740.00, 4-6 yr old 1050-1350 2-4 months Avg quality 550.00-640.00; 7-8 yr old 1050-1350 5-8 months Avg quality 610.00-655.00; 9 yr old 1000-1250 5-8 months Avg quality 540.00-590.00.

Morrison's Cove Livestock

Martinsburg, Pa.

Report Supplied by Auction
Monday, March 19, 2001

CATTLE: 128 HEAD.

STEERS: CHOICE 77.00-80.00, GOOD 74.00-77.00.

HEIFERS: CHOICE 75.00-82.00, GOOD 69.00-73.00

COWS: UTILITY AND COMMERCIAL 37.50-45.00, CANNER AND LOW CUTTER 20.00-35.00.

BULLOCKS: GOOD & CHOICE 52.00-58.50.

BULLS: YG#1 45.00-49.50.

FEEDER CATTLE: STEERS 78.00-94.00, BULLS 72.00-88.00, HEIFERS 68.00-81.00.

CALVES: 111. PRIME, NO MKT. TEST, CHOICE 95.00-103.00, GOOD 79.00-88.00, STANDARD 25.00-60.00; **HOLSTEIN BULLS** 90-130 LBS. 80.00-160.00, **HOLSTEIN HEIFERS** 90-130 LBS. 150.00-280.00.

HOGS: 262...US#1-2 48.00-49.00, US#1-3 45.50-47.50.

SOWS: US#1-3 25.00-37.00.

BOARS: 13.00-30.00.

FEEDER PIGS: 17. US#1-3 20-50 LBS. 12.00-32.00.

SHEEP: 14 HEAD. CHOICE AND GOOD LAMBS, NO MARKET TEST, **SLAUGHTER EWES** 35.00-55.00.

GOATS: 32.00-81.00.



VECTOR TOBACCO UPDATE

FINAL DAYS FOR SIGN UP

- DO IT NOW!

STILL NEED 400 ACRES

SIGN UP TO GROW VECTOR NOW

MARCH 30, 2001, FINAL DAY

TO SIGN UP OR ADD ACRES

Be sure you have 1320 feet distance between another variety of tobacco.

Other states are now interested in growing VT tobacco. Sign up now to keep PA's allotment

NOW BUYING 609 TOBACCO - NEW AND OLD CROP

Working with Vector is your local tobacco company:



Jerry Winstead, President, Larry Weaver, Manager, Gail Sensenig, Supervisor

641 Spruce Rd.,
New Holland, PA 17557
717/351-9221
Office Hours
Monday-Friday, 9 AM - 4 PM

Governor Tom Ridge Proclaims:



April 7-15, 2001

Sponsored by
American Emu Association (AEA)
and
PA Emu Farmers Assoc (PEFA)

National Emu Awareness Week was created to educate the public about emu agriculture and products. With over 6,000 farms, the industry is making headway into the new millennium as consumers become more familiar with emu products. Various events are planned nationwide.

Call to learn more about
* Emu Meat * - * Emu Oil * - * Leather *

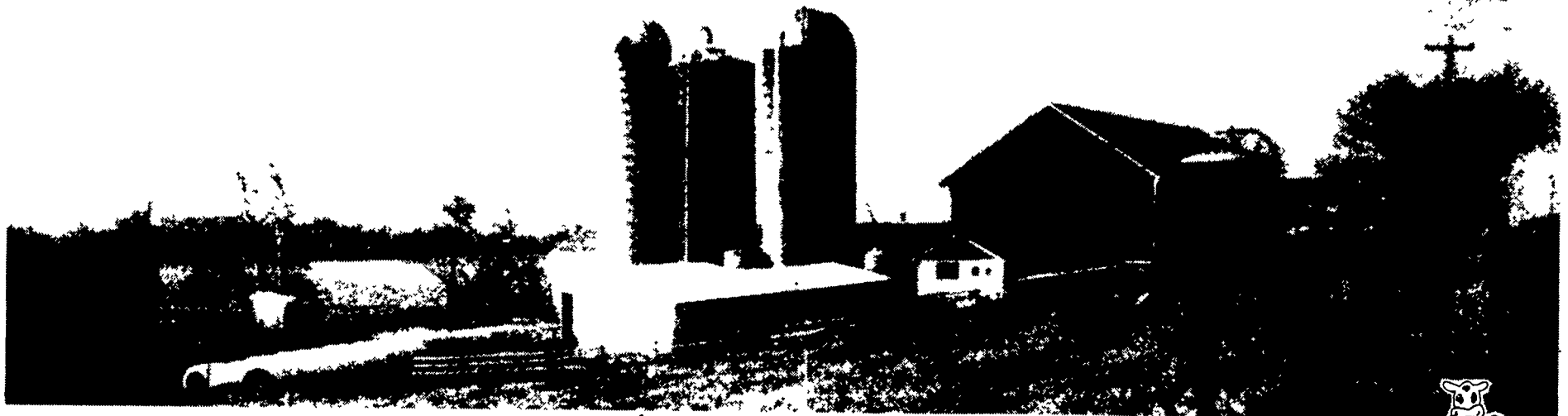
PEFA Members contact information

Last Name - Town / Phone

- Moss - Shickshinny 570-256-3259
- Long - Bloomsburg 570-380-1077
- Lorson - Williamsport 570-745-7551
- Kautz - Ruffdale 412-872-4306
- Wortung - Morgantown, WV 304-291-8605
- Appel - Elizabethtown 717-664-3990
- Bushong - Annville 717-865-6270
- Erdman - Lykens 717-365-3423
- Garber - Elizabethtown 717-367-1463
- Grove - Red Lion 717-244-6571
- Miller - Harrisburg 717-564-5815
- Osterling - Marysville 717-957-4411
- Redlawsk - Eiters 717-938-1695
- Rheinheimer-Jonestown 717-865-5360
- Scatena - Elizabethtown 717-362-9415
- Warburton-Elizabethtown 717-367-4293
- Bunton - Woxall 215 234-0473
- David - Oxford, MD 410-226-5060
- Freidman - Malvern 610-527-7940
- Hanson - Ivyland 215 675-5227

Contact any of the above PEFA members to learn more about healthful Emu products

Call Today -
You'll Be Glad You Did!



Since 1929, Mt. Joy has served the local Dairy Industry. Now grown to over 300 members, the Co-Op continues that commitment to marketing our member's milk in 10 counties.

- Local Markets • Local Board of Directors/Member Controlled
 - Mt. Joy's own trucking • High dollar over-order premiums
- are all reasons why Mt. Joy continues to be the leader in the area.

MOUNT JOY FARMERS CO-OP

Quality Milk Producer

1-800-860-6569 • 717-653-5431

