

Public Auction Register

THURS APR 26- New Milford, PA Construction, aggregate & farm equip. Kay's Gravel Co. By Goodrich-Petrowsky Aucts 607-642-3293
 THURS APR 26 - 9AM Real Estate, farm machinery, trucks, equip, antique furniture & collectibles. Along Hebe Bypass Rd., S Side of Fisher's Ridge, Jordan Twp, Northumberland Co Raymond & Janice Prntz David Deiber AU0001213-L, Ed Shoop AU000842-L

FRI APR 27- 9AM Helen M Scott Estate Personal property, car, storage bldg Real estate 14'x70' mobile home, 4 car garage 99 Scheller Rd, New Providence Kline, Kreider & Good #499 #513
 FRI APR 27 - 1 PM State Graded Feeder Pig Sales Carlisle Livestock Market, Inc 548 Alexander Spring Rd., Carlisle, Pa
 FRI APR 27- 6 PM Feeder Sale New Holland Sales Stables, Inc, 101 W Fulton St., New Holland, PA 17557

FRI APR 27 - 6PM Tack, 7 PM Horses Penns Valley Livestock, Centre Hall Mel Hoover Auct
 SAT APR 28- Coin Sale at Murry Auction Emporium, 23 N Water St., Litzitz Pa Eimer Murry AU648L
 SAT APR 28- Joe Bistline, Landisburg, PA - Farm machinery By Kling's Auctions, Inc and Mark Keller, Landisburg, PA
 SAT APR 28 - 8 30AM, 11 AM Horses Horse Sale Middleburg Livestock Auction PO Box 185 Middleburg, Pa Clarence Shirk 717-656-8793, John Shirk 570-837-9935
 SAT APR 28- 9AM Spring Farm Equip Auction trucks, trailers, autos, RV's, township equip, lawn & garden equip At Alparon Park, Troy, Pa Bob Shaylor auct
 SAT APR 28 - 9AM Kimler Stump Estate, 132 acre farm, household goods, tools and antiques Robert A Arner AU-000024-L Dean Arner AU-003421L

ANNE ARUNDEL CO. YOUNG FARMERS 22nd EQUIPMENT AUCTION SAT., MARCH 31, 2001 At 9:00 A.M.

Located at the Davis Farm, 3686 Birdsville Rd. between Route 2 and Route 214 in Davidsonville, Md. Consignments will be accepted on March 28th from noon to 6 pm and March 29th and 30th from 8 am to 6 pm. Baked goods and refreshments available. For info. call Joel Greenwell (410-798-5827) or Jeff Griffith (410-741-1743).

State of New Jersey
 State Agriculture Development Committee
PUBLIC AUCTION
 120+- Acres
 Preserved Farmland
Former dairy farm includes two-story residence, dairy barn and other agricultural buildings. Surrounded by preserved farmland and open space.
 Harmony Township, Warren County
Friday, March 30, 2001
 Minimum Bid: \$350,000
 A NJ Farmland Preservation Project
 For Details Call: (800) 474-5314

JOHN DEERE CONSIGNMENT SALE SATURDAY, APRIL 7, 2001 @ 9:00 AM

Location: 11790 Canning House Rd. Felton, York Co., Pa. (near Brogue). From I-83 exit 6 take Rt. 74S 12.9 mi. to L on Canning House Rd. Go 1.9 mi. to sale on L.

TRACTORS, RIDING MOWER, SNOWBLOWER, PLOWS, JD CLOCK, PEDAL TRACTORS, TOYS, PARTS, LITERATURE, COLLECTIBLES.

1949 MT-completely restored, ser#14210.B-ser#105398.B -hand crank. Unstyled B parts w/flat spoke whls.110 riding mower-restored. 110 snowblower -NICE.110 1 btm. plows. 4 LEG DEER: Wall Clock (Open Hands)-Very Nice. Centennial Penny Wall Plaque - Very Rare. CI seat. Literature stand w/lit-NICE. 5 gal. can -NICE.

Collectibles: NOS 1 hole corn sheller-never unpacked. Microfiche machine & parts cards. Notebook. 620 Christmas ornament. Pillow. JD H w/man. Precision: 4020 #3 in series, 1934 Model A classic. JD A w/man. Tin seats. #4 mower iron. Tool Box lids #3 & #4 mower caps Plates. 3/4" socket set. AB&G whl wts. Dubuque belt pulley & centerlinks. 1924 D Spec anniv. PTO tire pumps. Wrenches (wheel & flat), Brass oil filter. Expo set. Cable wagon lift. Watch fobs. Clevises. Step Walter Fry bolt gauge. Hyd. plugs. JD medallion 50-60-70 Hyd. cyl. Irvin Mundis bullet pencil. Winross truck-Neuhaus. 1937 GP&DP tractors. 1927 Vega 5B Lockheed airplane in box. 1929 Travel Air R airplane in box. 1928 C spec ed tractor in box. 1959 440 whl tractor - 3 pt. 1958 440 crawler. 1961 1010 crawler w/blade. 1969 690 excavators- 1 w/box, 150th yr. Deere Co. wall plaque. Desk pad & calendar. 1917 DAIN built by JD all whl. drive tractor. 1906 Type A Deere-Clark motor car Co eval of the JD toy. Magnets. Key rings. Waterloo Boy G,M,R in boxes. 1957 420 crawler w/blade, 1965 450 crawler w/blade & winch, old style. 1968 544 4 WD loader. 1970 544A 4 WD loader in box. 1968 Farmers pocket notebook. Sunglasses. Tape/levels. Suspenders. Pencils. Fly swatters. Card holders in carry case.

Clair D Worley items: Leather folder, notepad, ruler, bolt, gauge, 125th yr. sales Award, 1973 & 78 calendars, key rings, tie pins.

PEDAL TRACTORS: 2-620's, 2 whl trlr. w/fenders, 3010 3 hole. 3020. Lawn & Garden 520-30 early & late. 520-40.8400.7600.7410.8310.

BIKES: Black 10 spd. & green 3 spd.-VERY NICE.

PARTS: WFE round.4 cyl. power unit. F&H whl. wts. Drill cups. Plow points. Jointer brackets. Tail whl. axles. Combine parts. Van Brundt drill pc. MT fender, pistons, valves, set of clam shell fender (nice)

NOS.: 400 & 4010 clutch plate. #45 blade plates. 2020 hood. 530 grill & nosepiece-NICE. Implement parts from 1970 back. G: valves in box, battery box, water pipe & housing, air cleaner, muffler, bearing inserts. Lights 530 pistons & rings in box. 820 & 830 air cleaner btm. & fan & bracket. 2 cyl. parts.

Service manuals: 820, 1520, 1530, 2020, 2030, 2840, 4030, 4430, 4630. **Parts books:** 3010, 3020, 4020, 51010, 4320. **2 cyl. parts books** (unstyled), A,AR, AO, BR, BO,G, GN, GW, GH, H,L,LA, M, R, 70, 50. **Furrow mags:** 1976 Bicentennial issues & more. **2 cyl. mags. Sales lit:** 40,40 crawler, 2510, 4020, 1020, 2020. Tractor & equip. books. Equip. dealers environmental handbook. 1950 Ag price book. 1960 Ind price book & sales catalog. ind price sheets. 1965 cable plow lit. 1952 spec sheets for 1010 whl. crawler, loader, 610, 612, 624 dozer, 35 ripper, 100 log arch, 150 mt. log arch, 50 & 51 backhoe, 330 side boom, 310 H all hyd. mower. **Oper manuals:** A,R, 530. 1/16 scale toys. Small wood wagon, 1971 310 loader backhoe in box. 1987 2755 loader in box.

INSPECTION OF ITEMS: Day before sale 9-5.

TERMS: Cash or approved check.

AUCTIONEERS NOTE: This is only a partial listing!!!

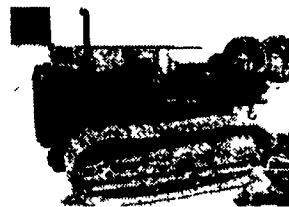
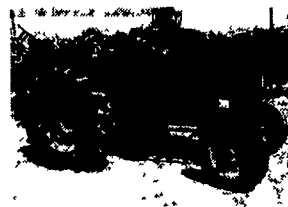
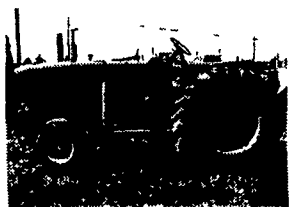
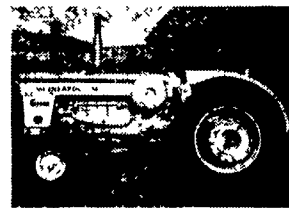
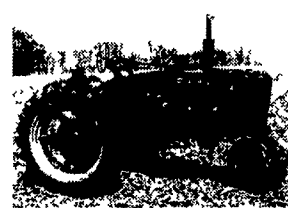
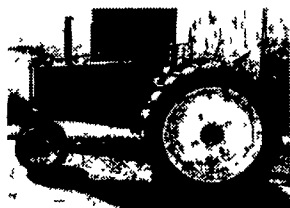
AUCTIONEERS:
 Rick Foreman Lic. 1163L
 Ralph Breneman Lic. 708L
 717-927-1305
 Refreshments Served. Owners & Auctioneers

PORTERFIELD AUCTIONS

**ANTIQUE & COLLECTOR TRACTORS
 ANTIQUE AUTOS & TRUCKS
 HIT & MISS ENGINES**

SAT. APRIL 21, 2001 @ 9:00am

LOCATED AT OUR YARD IN DRUMORE, LANC. CO., PA.
 Along Rt. 272 South approx. 1mile south of Buck PA.
 (From Lanc follow Rt. 272S to sale, from south follow Rt.1 to 272N to sale)



TRACTORS:

JD 4000 ser# B213R229775 Orchard syncro trans
 JD 830 ser# 8302889 Industrial (1 of 127), recent paint
 JD GP ser# O-15093 Orchard not running, original cond
 JD 60 Orchard very straight & original
 JD B Orchard runs, original
 JD D ser# 158228, turning brakes, fairly complete
 JD 430-W PS, excellent sheet metal, nice
 (2)JD 630 LP
 JD 40 w/wide front, restorable tractor
 1937 JD B ser# B41441, good condition
 (2)JD L styled
 MASSEY 35 -D recent engine overhaul
 OLIVER 1900 ser# 129551-952 Wheatland, w/Detroit diesel, factory front wheel drive
 OLIVER 990 ser# 530284 Detroit engine, runs good
 LONG MODEL A restored
 CASE DC Hycrop very rare
 (2) IH 330 Utility fast hitch, TA & PTO, (1 restored)
 IH 600-D chassis
 IH 140 runs good, good rubber
 1940 IH TD-6 Ag tractor, w/PTO very original, low hours (off a 20acre farm)
 (2) FARMALL H 1 w/loader, 1 w/live hydraulic
 FARMALL M w/factory wide front
 FARMALL Super A completely gone over, w/fast hitch & 6 attachments, excellent, super nice unit
 FARMALL MV Hycrop parts tractor

FARMALL F-12 not running
 FARMALL F-20
 FARMALL F-30 narrow & round spoke wheels
 FARMALL M fresh paint, live hyd, runs good, very nice
 FARMALL Cub w/belly mower, nice
 1937 McCORMICK 10-20 Orchard very nice, runs good, high speed trans, PTO & pulley
 McCORMICK B450 made in Britain, direct start diesel, WFE, factory 3PTH, diff lock
 McCORMICK Super SW4 live hyd
 AC WC ser# WC53645, restored, very nice
 AC G w/factory loader. Also disc, plow & manure spreader, nice
 MM 1000 ser# 32701571, diesel w/factory MFD, cab, rare, needs engine bearings
 MM 1000 ser# 32600646 Factory LPG, wheatland, w/dual PTO, very nice
 MM GVI ser# 16201165 diesel

TRUCKS & AUTOS

1930 CHEVORLET 1 1/2 TON needs restoration
 1946 CHEVORLET 17,000 gvw, runs good, cab & chassis, nice original cond
 1946 FORD pickup, factory flat bed, runs good
 1953 DIAMOND REO cab & chassis
 1955 CHEVY 2 door sedan
 1969 BUICK ELECTRA convertible
 1973 CHEVY NOVA 2 door sedan very nice condition
 1964 FORD MUSTANG convertible, needs restoration

TRACTOR PARTS & ACCESSORIES: OLIVER 77 or 88 loader, cultivators, complete hydraulic units for 77-880, Charlynn power steering unit for 770. Several skids of sheet metal & parts for IH & Farmall, wide front for Farmall M & 400. Farmall H cultivators. JD 2 BTM trailer plow. 5' rotary mower

FIXER UPPEERS or PARTS: INTERNATIONAL 1086 rops, runs good, needs TA & clutch. 885 MFD fire damaged; McCORMICK 10-20. JOHN DEERE 6400 MFD fire damaged, 301 complete rear w/reverser. CAT 55 Challenger 1996 very low hrs, runs, cab fire, needs tracks & cab. OLIVER Super 88 rears w/ frames, engine. CASE IH MAXUM and more.

HIT & MISS ENGINES: JOHN DEERE 1 1/2 hp restored, runs. NEW HOLLAND single flywheel 1 1/2hp runs, 4hp. WITTE 2hp, 6hp. EMERSON 5hp. FAIRBANKS 2hp. MECCA. HERCULES. LAUSON 1 1/2hp. OTTOWA. MAYTAG. IOWA LINE and more

FOR CONSIGNMENT CONSIDERATION CALL (717) 871-9004

PARTIAL LISTING. WATCH FOR WEEKLY UPDATES
 PHOTO'S AT: www.porterfieldauctions.com

Sale Order:

9:00 AM Small parts & skid lots
 10:00 AM Fixer upper row & accessories
 11:00 AM Tractors, Hit & Miss engines
 1:00 PM Autos

PORTERFIELD AUCTIONEER
 29 Indian Hill Road, Conestoga, PA 17516
 (717) 871-9004
 info@porterfieldauctions.com
 Terms: Cash, Certified funds, Visa/MC & MAC
 Bob Porterfield AU-3741-L
 Ed Leaman AU-2034-L