



HOG MARKETS

State Graded Feeder Pig Sale

Carlisle Livestock Market, Inc.
Report Supplied By PDA
Friday, March 9, 2001
RESULTS ON 585 PIGS.
TREND: COMPARED TO FEB. 23, STATE GRADED PIG SALE, PIGS WERE VERY ACTIVE, MOSTLY 20.00 HIGHER. ALL PIGS WERE SOLD BY THE HUNDREDWEIGHT.
US#1-2: 488 HEAD. 82 HEAD 43-49 LBS. 89.00-110.00; 149 HEAD 50-59 LBS. 91.00-108.00; 66 HEAD 63-69 LBS. 80.00-88.00; 137 HEAD 73-89 LBS. 83.00-93.00; 54 HEAD 90-99 LBS. 68.00-94.00.
US#2: 54 HEAD. 42 HEAD 48-59 LBS. 87.00-101.00, 12 HEAD 65-125 LBS. 82.00-87.00.
AS IS: 43 HEAD. 10 HEAD 40-53 LBS. 45.00-57.00, 33 HEAD 55-110 LBS. 45.50-60.00.
NEXT STATE GRADED FEEDER PIG SALE MARCH 23. RECEIVING FROM 6 A.M.-10:30 A.M. SALE 1 P.M.

feeders were active as packers show less interest. Around 29 percent of this week's supply returned to feed. All pigs were weighted and graded on arrival and sold by the hundred weight.
HEAD WEIGHT PRICE US 1-2 64 30-55 lbs 102.00-127.00
US 2 29 20-30 lbs 120.00-145.00 45 30-55 lbs 95.00-107.00
US 2-3 16 25-35 lbs 65.00-87.00 1 55 lbs 27.00
SLAUGHTER 110 20-35 lbs 125.00-150.00 23 110.00 As Is 76 20-25 lbs 70.00-95.00 73 30-150 lbs 10.00-20.00 11 45-85 lbs 20.00-35.00
ALL PIGS CONSIGNED TO WEDNESDAY FEEDER PIG SALE MUST ORIGINATE FROM A QUALIFIED NEGATIVE OR MONITORED HERD.

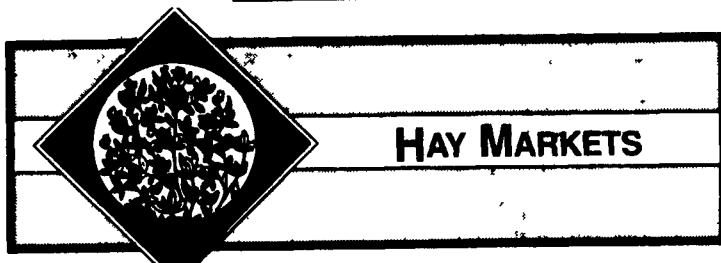
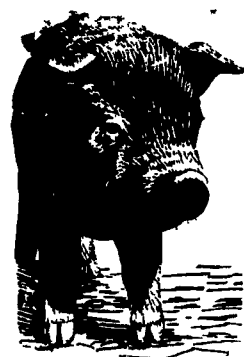
Indiana-Ohio Direct Hogs

Springfield, IL
March 15, 2001
Report Supplied By USDA
Estimated Daily movement: 27000 Estimate Negotiated sales: 7900
Trend: On a carcass basis barrows and gilts were steady to .75 higher. Demand light to moderate with a light run.
MAJORITY OF TODAY'S SALES (185 lb carcass) Percent Country buying points Plant Delivered Lean carcass sales live @74% yld carcass sales live @75% yld 51-52.9(1)51.50 -61.82 38.11 -46.00 52.25 - 62.45 39.19 - 46.84 Mostly 59.65 -61.82 44.50 - 46.00 mean 59.81 mean 44.86
BASE MARKET 49-51 PCT LEAN CARCASS BASIS PLANT DELIVERED.(2) 52.25 - 60 WTD AVGnot

available - Calculated Percent Country buying points Plant Delivered Lean carcass sales live @74% yld carcass sales live @75% yld 55-56.9 58.00 -65.70 42.92 -48.62 58.75 - 66.33 44.06 - 49.75 53-54.9 55.50 -64.11 41.07 - 47.44 56.25 - 64.74 42.19 - 48.55 51-52.9(1)51.50 -61.82 38.11 - 46.00 52.25 - 62.45 39.19 - 46.84 49-50.9 49.50 -60.50 36.63 - 44.77 50.25 - 61.13 37.69 - 45.84 47-48.9 47.50 -59.17 35.15 -43.79 48.25 -59.80 36.19 -44.85
Sows: Mostly steady. US 1-3 300-400 lbs 31.00-33.00 400-500 lbs 32.00-35.00 500-600 lbs 34.00-36.00 few over 600 lbs 36.00-37.00, few at 38.00
Boars: under 300 lbs 24.00-30.00; over 300 lbs 15.00-19.00 (1) majority of area hog population average percent lean (2) Based on individual packer buying programs. No premiums or discounts included.

New Holland Hog Auction

NEW HOLLAND, PA
March 12, 2000
Report Supplied By USDA
HOG RECEIPTS TODAY 1253, LAST MONDAY 517, LAST YEAR 1006.
BARROWS AND GILTS: Compared to last week, prices were steady.
PERCENT LEAN WEIGHT PRICE 49-54 220-280 lbs 42.50-44.50 Few up to 45.50
45-50 220-280 lbs 40.50-42.50
40-45 285-330 lbs 37.00-40.75
SOWS: No comparison due to light supply last week.
300-500 lbs 33.00-35.00 500-650 lbs 35.00-36.50
Boars: 300-700 lbs 16.00-17.00



HAY MARKETS

Diffenbach Auction Center

New Holland, Pa.
Report Supplied By Auction
Monday, March 12, 2001
TOTAL LOADS: 173
ALFALFA: HIGH 180.00, AVG 118.00.
MIXED HAY: HIGH 255.00, AVG. 103.00.
TIMOTHY: HIGH 175.00, AVG. 93.00.
ORCHARDGRASS: HIGH 100.00, AVG 74.00.
STRAW: HIGH 135.00, AVG. 100.00.
EAR CORN: HIGH 82.00, AVG. 74.00.
CORN FODDER: 22.00 BALE.
OATS: HIGH 2.60, AVG. 2.20 BU.
FIREWOOD: HIGH 65.00, AVG 65 00 LOAD.

Regional Hay

March 12, 2001
HAY & STRAW MARKET FOR EASTERN PA — (ALL HAY GOOD GRADE & BETTER PRICES PAID BY DEALERS AT THE FARM & PER TON) HAY AND STRAW FULLY STEADY, ALFALFA 50.00-110.00, FEW TO 130; MIXED HAY 50.00-110.00, FEW TO 125; TIMOTHY 50.00-115.00, STRAW 60.00-90.00; MULCH 20.00-40.00.
SUMMARY OF LANCASTER CO. HAY AUCTIONS — FOR WEEK ENDS 03/09/01. PRICES PER TON: 86 LOADS HAY, 17 STRAW & 0 EAR CORN. ALFALFA 52.00-120.00; MIXED HAY 55.00-120.00; TIMOTHY 50.00-115.00, STRAW 75.00-115.00.
SUMMARY OF CENTRAL PA HAY AUCTIONS — FOR WEEK ENDS 03/09/01 PRICES PER TON: 150 LOADS HAY, 32 STRAW & 0 EAR CORN. ALFALFA 52.50-120.00, MIXED HAY 60.00-112.50, TIMOTHY 63.00-110.00, STRAW 72.00-115.00, EAR CORN 51.00-70.00.

Weaverland Hay

New Holland, Pa.
Report Supplied By Auction
Thursday, March 15, 2001
Hay—Straw—Grain
TOTAL LOADS: 56.
ALFALFA: 48.00-145.00.
TIMOTHY HAY: 45.00-105.00.
ORCHARDGRASS: 75.00-107.00
MIXED HAY: 25.00-177.00.
STRAW: 35.00-120.00.
EAR CORN: 65.00-67.00.
OATS: 1.75 BU.
FIREWOOD: 45.00-85.00.
ALFALFA: ROUND BALES 5.00 EACH.

Wolgemuth Hay

Leola, Pa.
Report Supplied By Auction
Wednesday, March 14, 2000
Hay—Straw—Grain
83 LOTS TOTAL.
ALFALFA: HIGH 212.00, AVG 116.00
MIXED HAY: HIGH 175.00, AVG 91.00.
TIMOTHY. HIGH 110.00, AVG 83.00
GRASS HIGH 87.00, AVG 70.00
STRAW: HIGH 122.00, AVG 99.00.
OATS: HIGH 2.10, AVG. 1.83
FIREWOOD: HIGH 45.00 LOAD, AVG 45 00 LOAD

Vintage Hay

Vintage, Pa.
Report Supplied By Auction
Thursday, March 15, 2001
Hay—Straw—Grain
ALFALFA. 86.00-155.00
MIXED HAY. 75.00-110.00.
TIMOTHY: 64.00-79.00.
GRASS: 61.00-75.00.
STRAW: 117.00.
FIREWOOD: OAK 61.00-63.00

Westminster Hay

Westminster, Maryland
Report Supplied By Auction
March 13, 2001
Hay—Straw—Grain
114 LOTS
ALFALFA: 1 20-4.00 BALE
TIMOTHY 35.00, 1 70-3.30 BALE, 9 00-20.00 LARGE ROUND
MIXED HAY 1.50-3.10 BALE
GRASS: .90-3.70 BALE, 12 00-14.00 LARGE ROUND.
STRAW. 2.50-2.60 BALE.
SHELLED CORN 3 25 BAG
EAR CORN: 3.50-4.25 BAG
GROUND CORN 3.25-5.00 BAG
FIREWOOD 20 00-85 00 CORD
TREATED POSTS 2.60 EACH

Dewart Hay

Dewart, Pa.
Report Supplied By Auction
Monday, March 12, 2001
HAY. 53 LOTS, 50.00-125.00
STRAW 3 LOTS, 3 AT 95.00
WOOD: 5 LOTS 45.00-65.00 LOAD
CORN 6 LOTS, 67.50-70.00.
OATS 5 LOTS, 1.95-2.50 BU

New Holland Feeder Pig Auction

NEW HOLLAND, PA
March 14, 2001
Report Supplied By USDA
FEEDER PIGS WEDNESDAY 526, LAST WEEK 301, LAST YEAR 169
TREND: Compared to last week, feeder pigs US 1-2 sold 30.00 higher, with US 2 selling 50.00 higher. Slaughter pigs sold 10.00-25.00 lower. Farmer

PIGS
STATE GRADED SALE
RECEIVING 8-10:30 AM
FRIDAY
March 23
1 P.M.
at
Carlisle
LIVESTOCK MARKET, INC.
Exit 12 Off I-81 turn South
(717) 249-4511 or
Evenings Jim, 249-2359

CARLISLE LIVESTOCK MARKET, INC.
FAT and FEEDER CATTLE SALE
TUES. MAR. 20, 2001 7:00 PM
Early Bird Pens Close 2 PM Turn South Off I-81 @ Exit 12
Evenings Jim (717) 249-2359 Market (717) 249-4511

Complete Easter Sale:
Friday, April 6, 2001

- Rabbits - Poultry Eggs** Sale 9 AM
Receiving 7 AM - 9 AM (Hen House)
- State Graded Pig Sale** Sale 12:30 PM
Receiving 6-9:30 AM (Rear Docks Only)
- Goats, Lambs & Sheep** Sale: After Pigs
Receiving 7-11:30 AM (Front Docks Only)

Carlisle Livestock Market Inc.
I-81 - Exit 12 - Turn South
Mkt. (717) 249-4511 Jim DeGaetano (717) 249-2359 (Home)

PENNFIELD'S
NEW #70100
HIGH MOISTURE CORN CONCENTRATE
35% Protein
5% Fat
Price \$237.89* delivered
*The above price is for the week of 03/19/01 and includes early order, mid week, 8 ton volume, 4% cash discounts
For areas South Central PA and Maryland
Call Us Anytime
pennfield feeds
1-800-995-0333
www.pennfield.com

PENNFIELD 1
In Customer Satisfaction

- Guaranteed Customer Satisfaction
- No Charge Forage Testing
- No Charge Ration Balancing
- Trained Dairy Consultants

VINTAGE SALES STABLES, INC.

NEW MONDAY SALES
AT 10:30 AM
SELLING HEIFERS, BULLS, STEERS, FEEDER & BUTCHER COWS

TUESDAY SALES
10:30 A.M.
SLAUGHTER CATTLE AUCTION
STEERS, BULLS, HEIFERS, COWS, FEEDER CATTLE
At Approx. 1 PM
Selling Feeders

6:00 P.M.
CALVES, SHEEP, GOATS
*GET CALVES IN EARLY! OUR STATE GRADER STARTS AT 10:30 A.M.

L. ROBERT FRAME, SR., PRESIDENT
BUS (717) 442-4181 BUS (717) 768-8204
HOME (610) 458-8518

FIELD REPS
KENNETH E. HERSHEY (717) 442-4874
LEON HOOVER (717) 354-5835
BUTCH BROWN (717) 626-5394

TRUCKING SERVICE AVAIL.
LOCAL & LONG DISTANCE
(RT. 30, 10 MILES EAST OF LANCASTER IN PARADISE, PA)

Lancaster Farming

INDEX
Four Sections

DEPARTMENTS

- Editorial A10
- Farm Calendar A10
- Futures A16
- Sale Reports B12
- Antiques Report B16
- Public Auction Register B19
- Antiques Center B27
- Mailbox Markets C2
- Classified Ads C8

HOME & YOUTH

- Home On The Range B6
- Cook's Question B8
- Kid's Korner B10
- Homestead Notes B12
- 4-H Happening B15
- You Ask, You Answer B18

COLUMNS

- Now Is The Time A10
- Farm Management A26
- On Being A Farm Wife B4
- Family Living Focus B5
- Ida's Notebook B9
- Antiques Detective B28

FEATURES

- Chicken Holiday A1
- Anti-BSE A1
- Spring Custom Rates A25
- Grazing Systems A32
- Draft Horses A33
- Lancaster Conservation A36
- State Grange A37
- Ag Students Win A38
- Philadelphia Flower Show B2
- VA Dairy Princess B11
- Farm-Related Antiques B27
- Lycoming Lamb & Wool D2