

Anthony L.

# LANDIS

AUTO SALES

3394 Division Hwy., New Holland, PA 17557 (717) 355-0644  
Rt 322, 1-1/2 mi west of Blue Ball



**97 Ford F250 4x4**  
Extended Cab, PW, PDL, A/C, CD, 5 Spd.,  
7.5 Fl, Dark Green 123,000 Miles  
**\$12,900**



**97 GMC Safari SLT AWD**  
4 3, AT, PW, PDL, PM, PS, Dual AC,  
Tilt, Cruise, Cass., Quad Seats,  
89,000 Miles, Green & Silver  
**\$9,850**



**1986 S Model 2300, LTA300 Cummins, 9 Spd**  
fullertrons, 136,780 miles on new motor,  
AC, air ride suspension.....**\$5,250.**

Contact Bob at Hess Mills, Paradise, PA  
**1-800-635-3592**



## WM. COHEN & SONS, INC.

"THE TRUCK PARTS STORE"

HEAVY DUTY TRUCK PARTS - NEW & USED - REBUILT REARS & TRANSMISSIONS  
**(610) 269-1298 Fax (610) 269-0787 www.cohentruckparts.com**



**95 Morgan 20' Reefer Body**  
Swinging back doors, curb side  
door, needs corner & roof section



**96 Morgan 24' Reefer Body**  
Swinging back doors, curb side  
damage on Thermo-King sheet metal



**92 Hino Model FE**  
6 cyl turbo diesel, 6 spd, hyd  
brakes, 18' reefer body w/rollup  
door, roll up curb side door

**Ingersoll Rand Air Compressor,**  
Type 30, 15 HP 3 Phase



**Clark Crane, 14 Ton Capacity,**  
4-53 Detroit, 60' boom, 14 00x24  
tires, runs good, serial #720



**200 Gal. & 550 Gal.**  
Plastic Tanks For Sale



**Aluminum Tanker/Trailers**  
7500 gal and up

**11.1 60 series Detroit engines**  
**12.7 60 series Detroit engines**  
**8.2 non-turbo Detroit engines**



**12' Reefer Body,**  
under body refrigeration unit,  
Uses 220 electric. Has damage



**91 Isuzu NPR, 4 cyl**  
turbo-diesel, auto, 14' reefer  
body, 110 electric, 195,969 mi

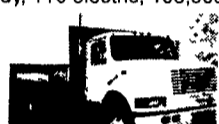


**Michigan Loader Model L30**  
Quick Coupler, Comes With 1 Yard  
Bucket and 60" Forks, Runs Excellent

**4 I-Beams,**  
49' Long, 28" High w/12-1/2" Web



**(9) 40' - 45' 1970's & Newer Steel**  
Flatbed Trailers (also have drop  
check trailers) some have sliding  
tandems, all in good condition.  
**\$2,500/Ea. and Up**



**94 IH Model 4900**  
DT466 engine, 5 spd, single rear,  
air brakes, A/C, 32,900 GVW, double  
frame, 11x22 5 Budds, 254" W B



**New Flatbeds Available**  
Sizes currently available are  
12', 14', 20', 22' and 24'  
Racks are also available

PONTIAC • HONDA • GMC TRUCK • ACURA • USED CAR CENTER  
1335 Manheim Pike • Lancaster, PA  
**717 394-0711**  
**Jones**  
QUALITY PRE-OWNED BEST BUYS!

Prices based on straight sale. Tax and tags extra. Trades accepted at actual cash value. Must present this ad at time of purchase for sale price.

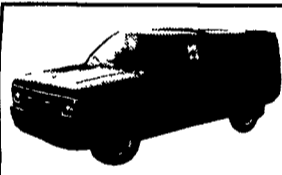
# JONES QUALITY PRE-OWNED BEST BUYS!



**'00 GMC XCAB 4x4**  
Hi Rider, Auto, Air, V6, Loaded,  
8K Miles, Was \$24,100  
**SALE \$20,200**



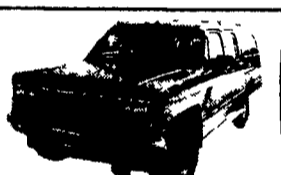
**'97 JEEP WRANGLER 4X4**  
Hard Top, 5 Spd, 4 Cyl,  
38K Miles, Black,  
#9711 Was \$15,500  
**SALE \$12,200**



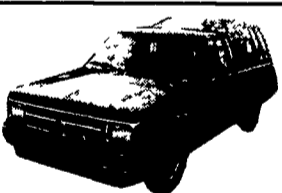
**'91 CHEV. S10**  
63,000 Miles, 5 Spd, PS,  
#9686 Was \$5800  
**SALE \$3,500**



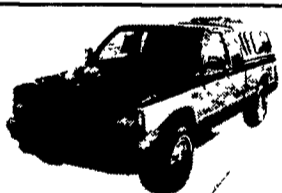
**97 GMC K15 XCAB 4X4**  
Auto, Air, SLE, 3 Door,  
#9712 Was \$20,800  
**SALE \$17,800**



**'90 CHEV. SUBURBAN 4X4**  
Auto, Air, 350, Nice,  
Was \$9,995  
**SALE \$7,000**



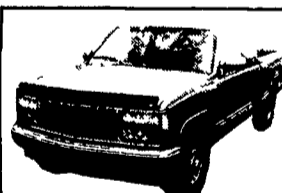
**'93 CHEV. S10**  
V6, Auto, Air, Tahoe,  
#9673 Was \$7,000  
**SALE \$4,850**



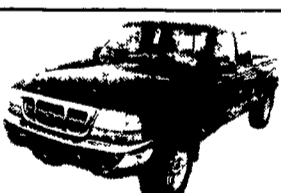
**'87 CHEV. S10 XCAB 4X4**  
Auto, Air, V6, 90K Miles,  
Was \$6,900  
**SALE \$4,400**



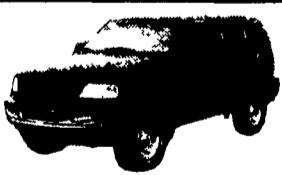
**'01 GMC 3/4 YUKON XL 4X4** 8100 V8, Auto,  
SLE, Trailer Package & Much  
More #28492 List \$42,996  
**SALE \$40,755**



**'90 GMC K15 XCAB**  
4x4, Auto, Air, V8, New Insp  
#9698, Was \$9,950  
**SALE \$6,700**



**'99 FORD RANGER XCAB 4X4**  
AT, Air, V6, XLT, Black,  
#9624 Was \$18,200  
**SALE \$15,200**



**'98 FORD F150 LARIAT 4X4**  
Auto, V8, Air, Stepside, Loaded,  
Black #9676 Was \$18,500  
**SALE \$13,700**



**'99 CHEV ASTRO AWD CARGO VAN**  
Auto, Air, 4300 Vertec, Osha Net,  
Bin package #9678 Was \$18,400  
**SALE \$15,900**



**'97 JEEP WRANGLER 4X4**  
V6, Air, Sport, Hardtop,  
Sound Bar, Was \$16,900  
**SALE \$13,700**



**'96 FORD E350 CARGO VAN**  
Power Stroke Diesel, Auto, Air,  
#9699, Was \$12,500  
**SALE \$9,250**



**'99 CHEVROLET SUBURBAN 4X4**  
LT, 350, AT, Loaded,  
#9704 Was \$27,000  
**SALE \$23,100**



**'98 CHEV K15 XCAB 4X4**  
Auto Air, V8, Silverado,  
#9594, Was \$20,884  
**SALE \$18,900**



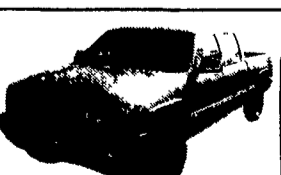
**NEW 2000 GMC K15 XCAB 4X4**  
8' Bed, SLE, 5300 V8, Auto  
Air, #29652 MSRP \$31,443  
**SALE \$24,850**



**'95 CHEV SUBURBAN**  
4x4 350 Auto, Air, LS, 60K  
Miles #9520, Was \$20,700  
**SALE \$15,974**



**'89 FORD F150**  
V8, XLT, Air, 5 Speed,  
87K Miles, Black, #9697,  
Was \$6,500  
**SALE \$4,200**



**'01 GMC K15 CREW CAB 4X4**  
Auto, SLE 6.0 V8, Air Loaded,  
MSRP \$35,085  
**SALE \$32,855**