

**35 TRUCKS AND TRAILERS**

1987 Chevy 3/4 ton pick-up, bad engine, good body, \$1000 obo. 610-383-6073

1998 Autocar Tri-Axle 1 1/2' Alum Dump Volvo 345HP 8LL Exc Truck! \$55,000 717-597-5623

1977 Int'l loadstar 1850 Cab & chassis, New Rebuilt 3208 Cat, 5+2 30K GVW, New 1100x20 Tires 610-285-6915

Stake 1/4" steel body, 88"x14' pintle hook, \$1200 obo. 717-560-3666

1982 Mack Superliner tri-axle, 400 V8 eng., 16' Ox steel body w/electric tarp, all new brakes on rear, good tires, good shape, \$20,000 OBO. 717/349-7365

1964 air compressor, 250 cfm, Schram, 471 Detroit dsl, runs & works, looks rough, it's on rubber, \$1,500 OBO. 856-447-5178.

1974 GMC 6500 series w/ 21' rollback w/approx 35,000 mi. Needs to be finished up. \$6,400 OBO. 856-447-5178.

1991 Pete, Ravens 28' dump trailer \$29,000. 610-286-5393.

87 Chevy P/U 107K 305 auto 2wd., runs well. Good body 717-249-8694 Leer cap. green \$2,800.

1987 Kenworth Tractor w/350 Cat Eng 729k Mi. P.L. Rohrer 2472 Old Phila. Pk., Smoketown PA 717-299-2571

'89 Volvo less eng & trans, new radiator, air ride, \$1500. 717-292-3030

1980 Mack 16' flat dump, 35,000 gv.w., \$6000. 814-848-9753

Lime spreader, New Leader, L3020, 16', Mark II, 6 yrs old, exc. cond., \$8500. 814-848-9753

417 Mack rears, \$1,000. Mack 5 spd trans from '81 C/O \$150. 610-767-8750.

1990 LA 9000, single axle tractor, 300 big cam, 10 spd, locking diff, P/S, exc. tires, \$6200. No Sun calls, 717-463-3938.

88 Ford E-350 cube van Supreme 14' aluminum box with low floor 351 AT \$3,900. 717-865-3093.

'81 Pete 36" sleeper, 400 Cum, 13 spd, 370, 77,000 mi on major by Cum 6" straights, new AC, 5th wheel, nice cond, wetline for dump/floor, \$15,000. 215-362-7255 Landsdale PA

1997 Enclosed Utility Trailer 5'x8' Single Axel, Int Light 3,000Lb Wt Limit. \$1650 717-548-2189

'95 Dekota pickup 4x4, V6, hi road miles, exc cond, \$6,900. 717-865-2022.

1987 Freightliner FLC limited edition, 425 Cat air to air, 15 spd, 12,000# front axle, 44,000# back, PS, air ride, 244"WB, 60" flat top bunk, good cond. Good truck to convert to dump truck, \$8000. 717-733-8860

70 Trailmobile 8,000G (2) Compartment Tanker \$2,200/obo; 79 Mack R68 5ST 300HP 5Spd 3 8R \$3500/obo. 610-399-5184

'98 Valley 14x7x7 bumper stock, rubber mat, wood-lined, good cond, \$3200. 610-286-0015

Fruehauf 40' straight cattle trailer, needs work on plate & dollies, \$2250. 717-566-0529

1984 Kenworth W-900B Cummins PT270, 13 spd, PS, 11x22.5 on springs. 1980 Montone 26' dump trailer, 11x24.5 on springs, roll tarp, grain chute. Well maintained, sharp looking pair, easy to get around with, fast & light. \$22,000 908-616-6887 after dark

'84 GMC gen long WB, 20' frame, 300 big cam w/ Jake brk, 14806, 8 spu w/lolo, 65000 rear on Henderson susp, air lift axle d/ tran & susp rebuilt w/in 3 yrs. \$6400 215-766-7164

'85 Ford LN8000, 31 500 GVW, 22 van body exc cond, \$12,000 410-810-2883

'00 Chevy Express LS 15 pass., 350 auto, PS, PB, PW, PDL, cruise, tilt, dual air, AM-FM cassette, privacy glass, 12,000 miles w/balance of factory warranty, \$22,500. 717-733-2873

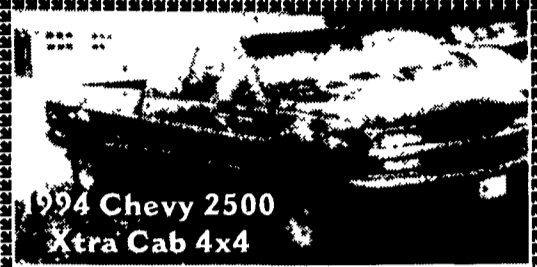
'99 Dodge 2500, 8 pass., 318 auto, PS, PB, PW, PDL, cruise, tilt, dual air, AM/FM Cass., 19,000 miles w/bal. of factory warranty, \$17,900. 717-733-2873

'00 Dodge 3500 12 pass. maxi van, 360 auto, PS, PB, PW, PDL, cruise, tilt, dual air, AM-FM cassette, black, 24,000 miles, excellent condition, \$19,900. 717-733-2873

'91 Chevy Silverado 1500 4x4 Suburban, 350, auto, PS, PB, PW, PDL, cruise, tilt, air, 8 pass., towing package, 2 tone blue, 92,000 miles, excellent condition, \$9,950. 717-733-2873

'91 Chevy 1500 Silverado Suburban, 2WD, 350 auto, PS, PB, PW, PDL, cruise, tilt, air, 8 pass., towing package, 75,000 one owner miles, excellent condition, \$7,900. 717-733-2873

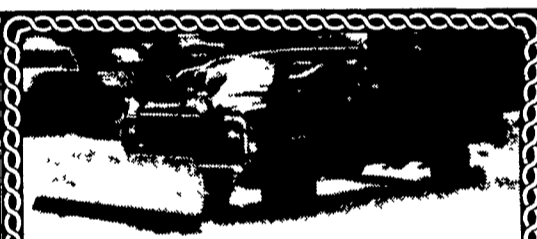
2000 Freightliner tri-axle dump truck, low mileage, heated alum J&J body, 72" sides, tarp, 24x5 alum bud wheels. 717-624-7259



**1994 Chevy 2500 Xtra Cab 4x4**  
Silverado, 454-V8, Auto, PS, PB, PW, PDL, A/C, Cloth, Cruise, Alum. Wheels, Hitch, Etc. 142K Miles, Very Nice Cond., Runs Super! **\$9,995**  
**717-774-5590**  
**Double D Auto Sales**



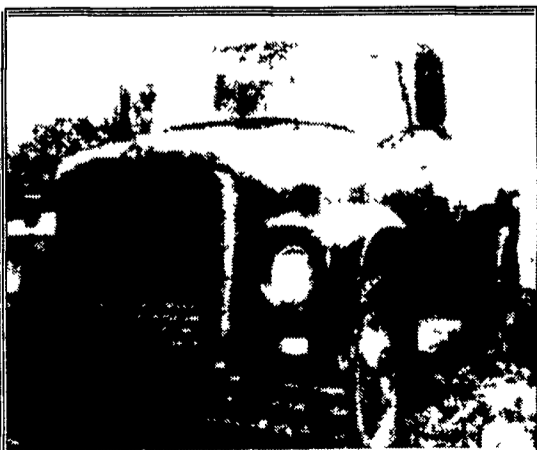
**1998 Peterbilt 357, Tri-Axle, 475 Cat, Jake, 8LL Trans., 18' J&J Alum. Body, New Insp., Looks Like New, All Aluminums, No Recaps - Loaded \$77,900**  
**K.T. GRAHAM INC. - 717-859-3168**



**1990 Dodge 150 4x4, 318, V8, AT, PS, Cruise and Angle Plow, New Inspection, Runs Great \$3,500 OBO**  
**717/733-2631**



**1992 Bocats Walking Floor Trailer, 42', 95 Yards, Air Ride, Slider, Suspension \$22,000**  
**717-653-9580**



**International Loadstar 1600 Dump Truck 83,000 Original Miles. 345 motor 2 speed rear, new tires, exhaust good shape! 16,000 GVW, ready to work and pull trailers. \$2,350**  
**610-793-2933**

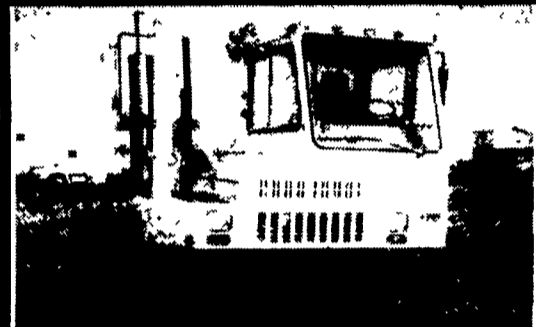
**KEYSTONE TARPS SERVICE & SALES**  
Is A Manufacturer Of Custom Tarps

- Systems
- Tarps
- Storage Covers
- Load Straps
- Gloves
- Used Railroad Ties

**1-800-798-TARP (8277)**  
**FAX 570-435-0036 570-435-0752**

- 96 Ford Explorer Sport, 6 Cyl., 5 Spd., A/C, CC, PS, PB, PW, PL, Black, 90,000 Miles.....**\$9,495**
- 95 Ford Ranger Super Cab, 4 Cyl., 5 Spd., A/C, PS, PB, 82,000 Miles.....**\$5,995**
- 95 Isuzu Rodeo, 6 cyl., 5 Spd., A/C, PS.....**\$6,995**
- 89 Dodge B-250 Van, 8 Cyl., AT, A/C, PS, PB, 98,700 Miles.....**\$4,500**
- 88 Chev. 3500 Utility Body, 8 Cyl., 4 Spd., PS.....**\$4,495**
- 87 Ford F150 6 Cyl., 4 Spd., PS, PB, Alloys, Sharp.....**\$3,995**

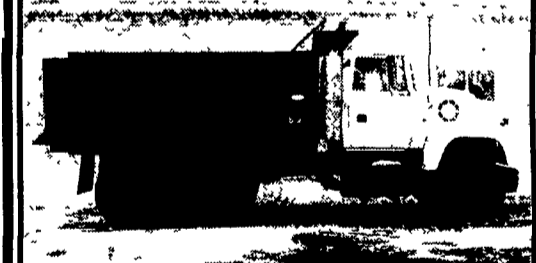
**ADAMS** Rt. 72 North of Lebanon, PA  
*Auto Sales inc.* **717-861-5483**



**1995 Ottawa YT-60 Tandem Axle Jockey A/C Wetline Cummins 6CT-Allison Auto \$36,800**  
**K.T. GRAHAM INC. - 717-859-3168**



**1992 Diamond Reo Tri-Axle**  
400 Cummins, 8LL Trans; 18# FA 44# Rears, A/C, 16 ft. Alum. with Steel Floor, 283,000 Orig. Miles, Currently Only 2nd Owner  
**Asking \$40,000 - Pager (717) 751-1594**



**1991 Ford T/A Steel Dump Truck**  
Cummins L-10 270HP, 40K RA; Double Frame; 8LL Trans., 110,000 Original Miles..... **\$24,500**  
**Curry Supply Co., Curryville, PA 1-800-345-2829**

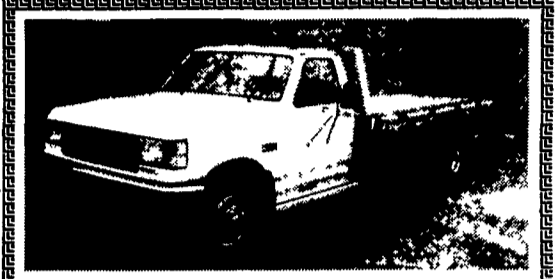


**1990 Volvo Vacuum Truck. New 2500 Gal tank Massonnet Liquid Cooled Pump, Cummins L-10 270 HP, Allison Auto Air Ride Susp. Nice Unit \$39,500**  
**Curry Supply Co., Curryville, PA 1-800-345-2829**

**'79 Autocar**

**\$15,000 OBO**

Cummins 290 with 7 Speed Spicer Trans., Hendrickson Susp., 3800 gl. with Pressure Lube. Pearson Vac-press. Pump, 8" Boom (needs work), 385R22.5 Steering Tires (60%), 4 New 11-20 Caps, 4 (40%)  
**717/626-8191**



**1988 FORD XL F Series**  
Super Duty Diesel Truck With 17 Ft. Chevron Roll Back 14,500 GVW, 44,000 Original Miles. **Asking \$16,999**  
**717-393-6530 or 940-1882**

**Load Boss Trailers Quality Built**

6x10  
10 000 GVW  
Battery  
Included  
Electric Brakes-  
Diamond Plate  
Toolbox  
Choice of color

Low profile, 6'x10', 10,000 GVW  
**814-623-8696** Delivery available  
Every trailer built for your needs.



**'80 Mack Superliner TA Dump, Rebuilt 400 Cummins with 20,000 Miles, New Springs and Bushings, New Bed Floor, Pintle Hitch and Lines \$19,000 Best Offer**  
**717-629-6285**



**1991 International 4900**  
33,000 GVW, 210 HP, 7 Speed, AC, AB, WB 184, 167,000 Miles  
**\$14,000**  
**(410) 531-2288 Ext. 634**



**1979 CHEVY C70**  
Allison Auto New 10000 Work. Good 26000 GVW Low Mile. Snow & Spreader. **\$7,295**  
**REBER AUTO CO.**  
Lincoln Ave. & Cumberland Sts. (for 29 yrs.)  
Lebanon, PA 717-273-5941