

**35 TRUCKS AND TRAILERS**

Dump Body w/Hoist 16' Flatbed w/4' Metal Sides \$1200; 66 GMC 14' Flatbed Dump 54" Grain Sides 305 V-6 Gas Eng 5+2 Rear \$1500 410-771-0071

Kenworth C/O, 400 Cat, 13 speed, \$3,000. 410-746-4822.

'78 IH dump truck, 33,000 Gross, air brakes, pintle hitch, recently overhauled, 466 dsl eng & clutch, inspected & ready to work. \$6500. Berks Co. 610-756-6259

Hill & Strause detach low-boy, non-ground bearing, tandem axle, wetline, outriggers, \$3500. 717-534-1253

'84 Kenworth tractor trailer, walk-in 60" sleeper, 400 Cummins, 13 spd, 370 rear, decent truck, call for info. 717-349-7845

20' Eby Gooseneck 97, new cond., Mats, Inc. \$8,900 OBO 717-432-2366.

'74 Autocar tand 290, Cummins out of frame, over 13 sp, wetline, new paint, tires, batt, \$8500. 301-746-8878

'80 GMC tractor, Cummins 290, Rogers 35 ton detachable trailer, 112M miles, one owner, \$10,500. 215-886-5000.

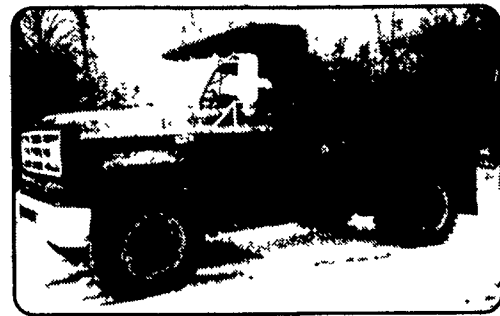
'80 R-model Mack 300+, tri-axle, steel body, 6 spd, PS, tarp, insp. \$14,000. 610-287-1614

1974 GMC, 13 spd trans, 40,000 mi, best offer. 610-436-0321.

'80 Chev. C-30 Dually with Trailer hook-ups. Rebuilt 350, 4-spd., good condition. Also 16' monarch cattle trailer \$2200. 717-867-5633



1989 Peterbilt 378, 425 Cat, 18 speed Eaton Fuller, new inspection, new injectors, wetline \$16,500 717-665-6729 or 507-5711



1974 GMC Dump Truck 23,000 GVW, V6, Gas, Good Rubber, Heavy Duty Hoist \$3,200 610-913-8016

**CHECK OUR GOOD SELECTION OF MISCELLANEOUS USED TRAILERS (From Landscape Models Up to 20-Ton Air Brakes)**



Gooseneck 14,000 GVW Trailer, (Appalachian) with 8 Lug Wheels, 7K Axles, 20' Flat Deck & 4' Beaver Tail (Flip Up) \$3,100 OBO

UM 4582 1995 Model Load Rite, 16' Galv-Steel Frame with Landscaper Rates, 7,000 lb GVW Tandem Axle \$2,250 OBO

UM 4669 Beck Skid Loader Trailer with 14' Deck & Ramps, Tandem Axle with Surge Brakes & Pintle Hitch Ideal for Farm Use, etc Only \$750

1993 Eager Beaver 20 Ton Air Brake, 19' Deck Plus 5 Foot Beaver Tail, Good Shape, Ready for Work ... \$8,800

**BINKLEY & HURST BROS. - YOUR DEALER FOR QUALITY TRUCK HITCH EQUIPMENT**



Introducing the Removable Ball Goose-neck Trailer Hitch from UNA-GOOSE

Unique patented design requires no welding or alteration. (Avoids possible electronic damage to late model trucks from welding)



Bolts under the bed directly to the frame without removing truck bed. (Will pass D O T. inspection)

• Strong Enough For Maximum Load



**BINKLEY & HURST BROS. INC.**

133 Rothsville Station Rd. P.O. Box 0395 Littitz, PA 17543-0395 (717) 626-4705 1-800-414-4705 Fax 717-626-0996



**1978 IH STAKE BODY** w/hydraulic lift gate, excellent hay/straw truck, needs motor - \$1,500 Call (610) 383-7042

**Weaver Distributing Warehouse Direct To Your Door!**



<p><b>Trailer Hitches Class 1 thru 5</b></p>	<p><b>Brake Controls \$59.95</b></p>
<p><b>Convert-A-Ball \$31.95</b></p> <p>REMOVE BALL-REPLACE WITH DESIRED SIZE</p>	<p><b>Elec. plugs and adapters</b></p>
<p><b>Pintle Hooks and Accessories</b></p>	<p><b>Bike Racks</b></p>
<p><b>Triple Tow Mounts Black or Chrome balls</b></p>	<p><b>Cargo Carrier \$89.99</b></p>
<p><b>Fold-down Gooseneck Hitch</b></p>	<p><b>Extend-A-Truck \$99.00</b></p>
<p><b>Pop-Up Gooseneck Hitch</b></p>	<p><b>Adjustable Ballmounts</b></p>
<p><b>Firehawk 5thwheel Gooseneck Hitch</b></p>	<p><b>Free shipping for most orders</b></p> <p>Call For a Free Catalog 1-800-932-8373 1-800-WEAVER-D Weaver Distributing 125 Blue Mountain Rd Fredericksburg PA 17026</p>

**CHAPMAN**

FORD LINCOLN MERCURY NISSAN

**LEBANON**

20th & Cumberland Sts. Rt. 422 West 9-9 Daily, 9-5 Sat.



**94 MERCURY VILLAGER LS** Fully Equipped, #R4662A \$5,995



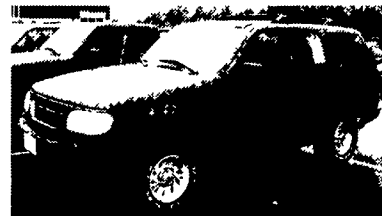
**98 FORD RANGER XLT** 4x4, 5 Spd., CD Player & More \$13,995



**96 FORD EXPLORER XLT** Leather, CD, 4x4, 46,000 Miles, #1050A • \$13,995



**99 FORD RANGER XLT SUPER CAB 4x4** 16,000 Orig. Miles, #P4694 \$18,995



**99 FORD EXPLORER XLT** 4x4, Loaded, #P4705 \$20,995



**2000 MUSTANG CONVERTIBLE** V6, AT #P4737 \$21,499



**99 FORD E350 15 PASSENGER VAN** V8, AT, A/C, #R4657 \$22,995



**99 FORD F350 CREW CAB** Dually, Power Stroke Diesel, Utility Box, Perfect Work Vehicle, #6398A \$22,995

**Many, Many More Trucks In Stock... Too Numerous To List Here!**

**Credit Problems? Call 1-888 CARS 4 You TRUCKS - UTILITY VEHICLES - TRUCKS**