

Carlisle Livestock

Carlisle, Pa.

Report Supplied by Auction

Tuesday, March 6, 2001

SLAUGHTER CATTLE: ACTIVE! STEERS 71 HEAD. CHOICE 1100-1500 LBS. 77.25-83.75, 1550-1780 LBS. 69.25-82.50, SELECT AND LOW CHOICE 74.00-77.00, HOLSTEINS CHOICE 1150-1575 LBS. 66.50-72.75; HEIFERS CHOICE 950-1525 LBS. 76.25-83.25, SELECT 70.00-76.00; COWS, STRONG DEMAND! BREAK-

ERS 47.00-50.75, BONERS 42.00-48.00, LEAN 40.00-49.00, COUPLE LIGHTS, LOW DRESSING DOWN TO 37.25, SHELLY 36.00 AND DOWN.

FEEDER CATTLE: STEERS, MEDIUM AND LARGE #1 250-650 LBS. 85.00-122.50, 675-850 LBS. 77.00-83.00, HOLSTEINS 600-750 LBS. 69.00-71.00; HEIFERS MED. AND LARGE #1 250-600 LBS. 69.00-83.00, 625-800 LBS. 69.00-75.00; HEIFERS MED. AND LARGE #1 250-600 LBS. 69.00-83.00, 625-800 LBS. 69.00-75.00; CALVES RETURNING TO THE

FARM, HOSLSTEIN BULLS #1 85-130 LBS. 125.00-164.00, HOLSTEIN HEIFERS #1 90-120 LBS. 355.00-375.00, HOLSTEIN HEIFERS #2 70-120 LBS. 155.00-230.00, BEEF X BULLS 85-100 LBS. 155.00-180.00.

SWINE: HOGS US#1-3 230-305 LBS. 45.00-47.00; BOARS 220-600 LBS. 14.00-29.00; SOWS US#1-3 300-350 LBS. 35.50-45.00, 350-475 LBS. 33.00-37.75, 480-550 LBS. 36.00-39.00, THIN, WEAK, ROUGH TO 32.50; FEEDER PIGS BY THE LB. 30-45

LBS. 80.00.

GOATS: BY THE HEAD, LARGE NANNIES AND BILLIES 55.00-170.00, FANCY KIDS 65.00-80.00, FLESHY KIDS 50.00-65.00, SMALL, THIN KIDS 25.00-50.00.

LAMBS: GOOD AND CHOICE 60-75 LBS. 119.00-125.00, 80-130 LBS. 98.00-108.00.

SHEEP: ALL WEIGHTS 56.00-62.50.

SALE EVERY TUES. 5 P.M. FOR RABBITS, POULTRY AND EGGS; 6:30 P.M. FOR LIVESTOCK, STARTING WITH CALVES; SPECIAL FED CATTLE SALE TUES., MARCH 20; STATE GRADED FEEDER PIG SALE FRI., MAR. 9; SPECIAL FEEDER CATTLE SALE TUES., MARCH 20; PEN LOTS OF CATTLE SOLD IN ORDER RECEIVED; EARLYBIRD PENS CLOSE TUES. 2 P.M.

Livestock Cooperative Auction Market Of North Jersey

Hackettstown, N.J.

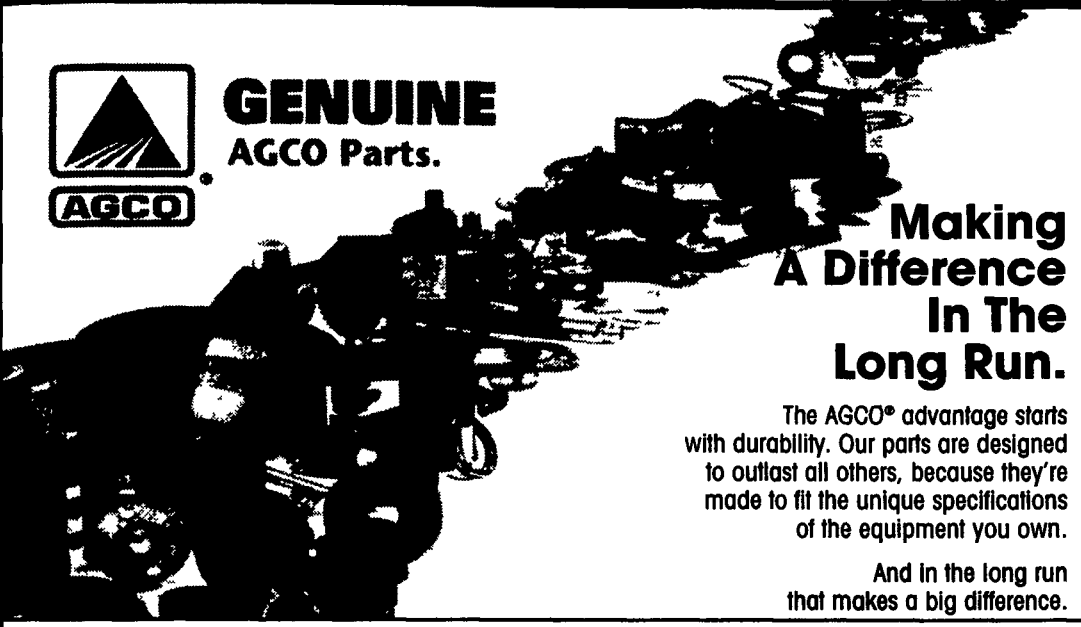
Report Supplied by Auction

Tuesday, March 6, 2001

CALVES .02-3.50.
COWS .18 1/4-.50.
EASY COWS .23 1/2-.38 1/2
FEEDERS 300-600 LBS. .26-.94.
HEIFERS .45-.66.
BULLS .34-.58.
STEERS .50-.72.
HOGS, NONE.
ROASTING PIGS EA. 1.00-35.00.
BOARS .15 1/2.
SOWS, NONE.
SHEEP .67 1/2-.95.
LAMBS EA. 62.00-65.00.
LAMBS PER LB. .40-1.67 1/2.
GOATS EA. 52.00-110.00.
KIDS EA. 25.00.
HIDES EA. 26.00-41.00.
TOTAL: 237 HEAD.



GENUINE AGCO Parts.



Making A Difference In The Long Run.

The AGCO® advantage starts with durability. Our parts are designed to outlast all others, because they're made to fit the unique specifications of the equipment you own.

And in the long run that makes a big difference.

Airville, PA
FARMERS EQUIPMENT
3524 Delta Road
717-862-3967

Annaville, PA
BHM FARM EQUIPMENT
Rt. 934, 2 miles N. of Annville
717-867-2211

Beavertown, PA
B&R FARM EQUIPMENT
RR# Box 2424
571-658-8175

Bechtelaville, PA
MILLER EQUIPMENT CO.
RD #1
610-845-2911

Bethel, PA
ZIMMERMAN FARM SERVICE
1/2 mile West of Rt 501 on School Rd.
717-933-4114

Columbia Cross Road, PA
COLUMBIA CROSS ROAD
RD 2, Box 62
570-297-3873

Elizabethtown, PA
HERNLEY'S FARM EQUIPMENT
2095 South Market St.
717-367-8867

Glen Rock, PA
WERTZ FARM EQUIPMENT
6877 Lineboro Road (PA Route 516)
717-235-0111

Mifflinburg, PA
ALLEN HOOVER REPAIR, INC.
RD #1, Box 227
570-966-3821

Punxsutawney, PA
LONDON FARM SUPPLY
814-938-7444

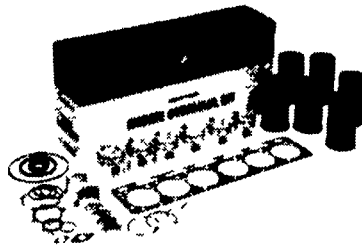
Quarryville, PA
GRUMELLI FARM SERVICE
929 Robert Fulton Hwy. (Rt. 222)
717-786-7318

Roxbury, PA
HOLTRY'S EQUIPMENT
10948 Roxbury Road
717-532-7261

Sandy Lake, PA
SANDY LAKE IMPLEMENTS
3675 Sandy Lake Rd.
724-376-2489

Waynesboro, PA
B. EQUIP., INC.
8422 Wayne Highway
717-782-3193

AGCO® ENGINE KITS



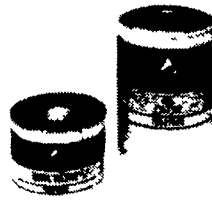
- Complete overhaul kits
- Quality OEM parts
- Full one-year warranty
- Kits for most applications
- Saves you time and money

AGCO® LUBRICANTS



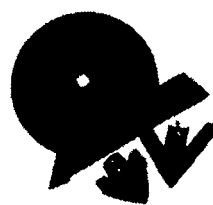
- Premium Quality
- Custom Additives
- Meet/Exceed OEM specs.
- Protect your warranty.

AGCO® FILTERS



- Our filters are 99% guts
- Designed for heavy duty applications
- Made to OEM specifications

AGCO® TILLAGE TOOLS



- Most types and sizes available
- Full replacement guarantee

AGCO® TorQmaster Clutch



A full 60 degrees of free movement allows for easy hook up. One clutch can be used in many different situations using interchangeable yoke series with common mounting holes. Cast gray iron cooling fins isolate and dissipate heat for longer life.

Champions Chosen At 2001 Dixie National ROV Angus Show

JACKSON, Miss. — Angus breeders converged at the 2001 Dixie National Roll of Victory (ROV) Angus Show, Feb. 11 in Jackson, Miss., to compete for top honors. Jim Pipkin, Republic, Mo., evaluated the 160 entries that consisted of 118 females and 42 bulls.

W V F HB Atlantic Natl Merit, a September 1999 son of L F New Trend 4100, claimed reserve grand champion bull

and senior bull calf champion. Harry Bachman, Annville; Weaverland Valley Farms, New Holland; and Fox Cross Farm, Alderson, W. Va., own the bull.

Champion Hill Peg 1763 strolled to grand champion female honors. Fox Cross Farm, Alderson, W. Va., and Champion Hill, Bidwell, Ohio, own the September 1999 daughter of L F New Trend 4100 that first won senior heifer calf champion.

BEEF

IT'S WHAT'S FOR DINNER.

Coming...

CUSTOMER APPRECIATION DAYS

Friday & Saturday, March 23 & 24

Watch For Details - Mar. 17 Lancaster Farming

SLAYMAKER ELECTRIC MOTOR & SUPPLY CO.

(717) 684-5050 ♦ (717) 684-3940

146 Penn St., Washington Boro, LANCASTER COUNTY, PA

McElwee's Livestock

Home of Shippensburg Cownet
3 Locations To Serve You

Newburg

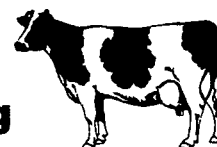
Mon. 9-4, Thurs. 9-2
(717) 423-6869

Woodsboro, MD

Tues. 10-2
(301) 845-6232

Chambersburg

Wed. 9-3
(717) 267-3321



Receiving All Cows, Bulls, Steers, Calves
Call For Daily Price Quotes