

**1997 Mack RD6885 Tri-Axle Dump,** 350 H.P., Jake, 8LL Trans., 18/44 Axles, Air Ride Cab, A/C, 17-1/2' Beau Rock Heated Body w/Electric Tarp, Air-Gate, White, **\$59,500,** 135,000 Mi  
**(267) 228-4535**

**1997 Tow-Master, 25 Ton Tri-Axle Tagalong Trailer, 24' Deck, 102" Wide, Air Brakes, \$10,500**  
**(267) 228-4535**

**35 TRUCKS AND TRAILERS**

1998 Autocar Tri-Axle 19 1/2' Alum Dump Volvo 345HP 8LL Exc Truck! \$55,000 717-597-5623

'98 Chevy 19' steel roll-back, wheelift, new parts, tire, br, rotor, p a l n t, all power, must sell, new tk is here, 120K, \$32,500 neg. Hunt, PA, 814-658-3723.

Fassi model F8SE drywall type boom crane w/ extend-a-boom, approx 35' reach, no forks, 24' steel bed, can be mounted front or rear of truck, ex cond, \$4750. 301-829-0271

**35 TRUCKS AND TRAILERS**

1980 Mack 16' flat dump, 35,000 gvw, \$6000. 814-848-9753

Lime spreader, New Leader, L3020, 16', Mark II, 6 yrs old, exc. cond., \$8500. 814-848-9753

417 Mack rears, \$1,000. Mack 5 spd trans from '81 C/O \$150. 610-767-8750.

1981 Ford LN7000, stake body, 3208 Cat, 5+2, hyd brakes, \$3,600 OBO. 610-869-5898.

1990 LA 9000, single axle tractor, 300 big cam, 10 spd, locking diff, P/S, exc. tires, \$6200. No Sun calls, 717-463-3938.

88 Ford E-350 cube van Supreme 14' aluminum box with low floor 351 AT \$3,900. 717-865-3093.

'81 Pete 36" sleeper, 400 Cum, 13 spd, 370, 77,000 mi on major by Cum 6" straights, new AC, 5th wheel, nice cond, wetline for dump/floor, \$15,000. 215-362-7255 Landsdale PA

1997 Enclosed Utility Trailer 5'x8' Single Axel, Int Light 3,000Lb Wt Limit. \$1650 717-548-2189

'46 Chevy Stake Body Truck 1 1/2-Ton. Orig Radio & Heater, Good Eng & Tires. Clean. Ready to Go. Call After 7pm 610-431-3423

TRAILER 5 ton, 16', HD, dual axles, 16" tires, \$2,750. 410-692-5224.

'95 Dekota pickup 4x4, V6, hi road miles, exc cond, \$6,900. 717-865-2022.

1987 Freightliner FLC limited edition, 425 Cat air to air, 15 spd, 12,000# front axle, 44,000# back, PS, air ride, 24"WB, 60" flat top bunk, good cond. Good truck to convert to dump truck, \$8000. 717-733-8860

70 Trailmobile 8,000G (2) Compartment Tanker \$2,200/obo; 79 Mack R68 5ST 300HP 5Spd 3 8R \$3500/obo. 610-399-5184

'98 Valley 14x7x7 bumper stock, rubber mat, wood-lined, good cond, \$3200. 610-286-0015

Fruehauf 40' straight cattle trailer, needs work on plate & dollies, \$2250. 717-566-0529

1984 Kenworth W-900B Cummins PT270, 13 spd, PS, 11x22.5 on springs. 1980 Montone 26' dump trioler, 11x24.5 on springs, roll tarp, grain chute. Well maintained, sharp looking pair, easy to get around with, fast & light, \$22,000. 908-616-6887 after dark

'84 GMC gen long WB, 20' frame, 300 big cam w/ Jake brk, 14806, 8 spd w/olo, 65000 rear on Henderson susp, air lift axle, dr tran & susp rebilt w/in 3 yrs. 215-766-7164

'89 Ford LN8000, 31,500 GVW, 22' van body, exc cond, \$12,000. 410-810-2883

Fruehauf stainless steel storage trailer, 32x8, \$1,200. 215-886-5000.

'99 Gooseneck tri-axle flatbed trailer, 20,000 GVW, 36' loading area, low profile, heads for ball or 5th wheel towing, 2-tool boxes, ex cond, \$5400. 717-987-3210

(2)SS milk trailers, 5000 & 6000 gal., ideal for liquid fertilizer or water hauling, reasonable price. 302-324-9646, 302-395-1233

45' drop deck trailer, virgin rubber 90%, brakes 80%, \$6500. 570-458-6918

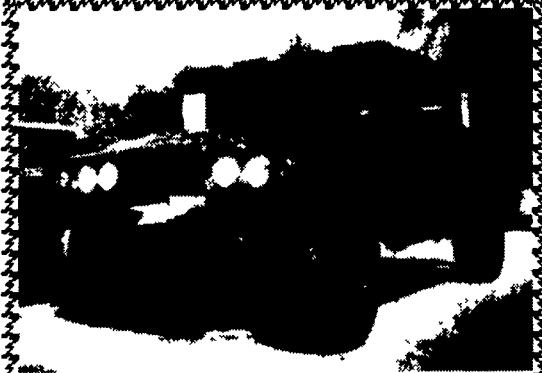
'76 Eby utility trailer, custom built, alum, 4x8x2, hydra lift, dual axle, exc cond, \$3,500. 717-545-9603.

Gooseneck dump trailer, very good cond., 8'x12' knapheide bed, new floor & paint, \$4500 OBO. 814/667-3542

'98 Dodge 1500 club cab, short bed, 2WD, 318 5 spd, PS, PB, air, Am-Fm cassette, 34,000 miles, black, excellent condition, \$12,500. 717-733-2873

**Shed Transporter Unit \$34,000**  
**(717) 354-8789**

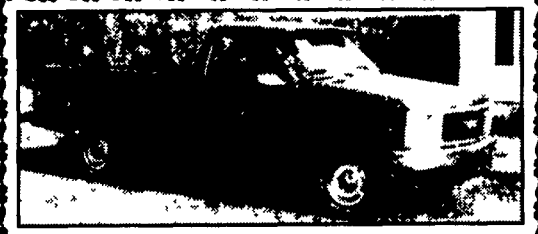
**1991 International 4900** 33,000 GVW, 210 HP, 7 Speed, AC, AB, WB 184, 167,000 Miles  
**\$14,000**  
**(410) 531-2288 Ext. 634**



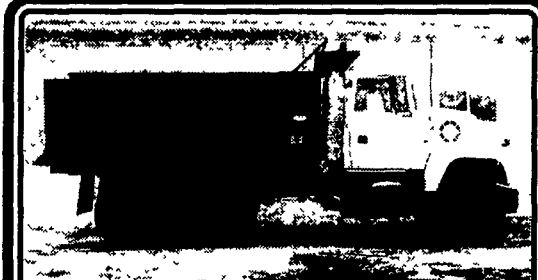
2000 Custom built Hum-vee, Badlands, Gm fuel injected V8, auto, 3/4 frame, A/C Pb, Ps, AM/FM/CD, 4 bucket seats with center 2 seater jump seat. Great ride with plenty of power. List \$54,000 will sell for \$43,000.  
**(610) 793-4257**



**2000 Moritz Gooseneck, Horse/Stock Trailer, 13'x6', 6'x6'8" Used Twkel \$4,600**



**1995 GMC SL 1500** 4x4, 4.3 V6, 5 Spd., PS, PB, AM/FM, 6100 GVW, 44,000 Mi. ....**\$9,950**  
**A & J AUTO SALES**  
798 E. Main St., Rt. 322 East Ephrata, PA 17522 **717-733-2873**



**1991 Ford T/A Steel Dump Truck** Cummins L-10 270HP, 40K RA; Double Frame; 8LL Trans., 110,000 Original Miles..... **\$24,500**  
**Curry Supply Co., Curryville, PA 1-800-345-2829**

**AL HAMILTON USED TRUCK SALES**

P.O. Box 157, 55 Doe Run Road, Manheim, PA 17545

**Phone: 717-665-7145 Fax: 717-665-2137**

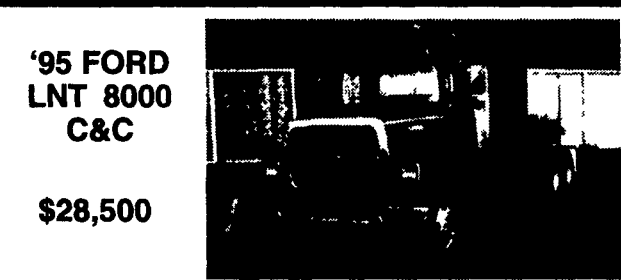
**"CLEANEST TRUCKS AROUND"**



**(2) '87 MACKS R686ST** Twins T.T. Eng. 300 HP, 6 Spd. Trans, Custom Int. A/C, Wet Lines  
**\$14,500-\$15,500**



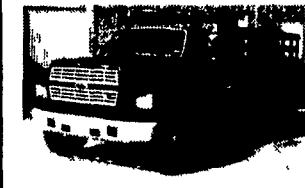
**'94 FORD F-600 14' Dump,** 5.9 Cummins, 5 Spd. Trans, 2 Spd. Rear, Hyd. Brakes, A/C, 25,500 GVW  
**\$18,500**



**'95 FORD LNT 8000 C&C**  
**\$28,500**  
8.3 Cummins 225 HP, 9 Spd. Trans., Air Brakes, A/C, Custom Int., 260 WB, 192 CA, 58 GVW



**'94 FORD LNT 9000 C&C** L-10 Cummins 280 HP, 9 Spd Trans., Air Brakes, A/C, 264 WB, 192" C.A., 58,000 GVW  
**\$30,500**



**'93 FORD F-600** 14' Flat Dump, 5.9 Cummins, 160 HP, 5 Spd. Trans., Hyd. Brakes, A/C, 25,500 GVW  
**\$17,500**



**'85 MACK MS 200 C&C** 175 HP Diesel, 5 Spd. Trans., 2 Spd. Rear, Hyd. Brakes, Under CDL, Has PTO, 126 C.A.  
**\$2,500**



**'87 INT S-1900 C&C** DT-466, 215 HP, 7-Spd. Trans., Air Brakes, A/C, 138 C.A., 206 WB, 32,800 GVW  
**\$14,500**



**'77 FORD F-700** 10' Dump, 391 Gas, 5 Spd. Trans., 2 Spd. Rear, Pintle Hook, Hyd. Brakes  
**\$2,500**



**'84 INT. 2300** L-10 Cummins, 7 Spd. Trans., AC, PS, Air Brakes, New 10' Dump, 35,000 G V W  
**\$19,500**



**'94 FORD LN8000** New 10' Dump, 8.3 Cummins 210 HP, 6 Spd. Trans., Air Brakes, Custom Int., 35,000 GVW  
**\$27,500**



**'73 GMC 6000** 22' Rollback, 350 Gas, 5 Spd. Trans., 2 Spd. Rear, Hyd. Brakes, 26,000 GVW  
**\$9,500**



**'94 FORD LNT 8000** 26' Van Body, Lift Gate, Side Door, 8.3 Cummins, 225 HP, 9-Spd. Trans, Custom Cab, A/C, 58,000 GVW  
**\$31,500**



**'95 INT. 4900 C&C** DT-466, 210 HP, 6-Spd. Trans, Custom Int., A/C, 254" W.B., 185 C.A., Air Brakes, 35,000 GVW  
**\$20,500**



**'94 FORD F600 C&C** 5.9 Cummins, 5 Spd Trans., 2 Spd. Rear, Hyd. Brakes, A/C, 174 W.B., 108 CA, 25,500 GVW  
**\$14,500**



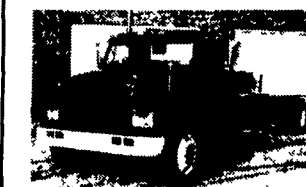
**'81 INT 1700** 345 Gas, 5 Spd. Trans., 2 Spd. Rear, Hyd. Brakes, 138" C.A., 218" W.B., 25,000 GVW  
**\$6,000**



**'94 FORD LN8000 C&C**  
**\$19,500**  
8.3 Cummins, 6 Spd. Trans., 222" W.B., 156" CA, 33,000 GVW



**USED VAN BODIES** 18'-26' Starting At \$2,000



**'93 INT. 4900 C&C** DT-466 6 Spd Trans., Custom Int. A/C, 186 CA, 254 WB  
**\$17,500**