

'91 VW Jetta GL, red, 86K, auto, air, good cond, \$3200 obo. 717-426-2659

'89 Gran Prix, V6, 2-dr auto w/OD, good cond, \$1,700. 717-865-2022.

'98 Olds Cutlass GLS
V6, Keyless Entry, Tape & CD Player, Leather Seats, 51K Mi., Will Paint Your Color
\$11,900 \$10,900
(717) 729-5433

33 RECREATIONAL VEHICLES

1998 Honda 4x4 Four Trax, Used Very Little. Exc Cond., \$3,600/OBO 610-582-7320

1997 36' travel trailer, gas stove/heat, electric or gas refrig, full bed, couch & table convert into bed, kitchen, walk thru bath, 3 bunk beds, A/C, exc condition, \$10,000. 610-285-6272.

'86 Avion travel trailer, exc cond, similar to Airstream, 30', \$7500. 410-820-7513

35 TRUCKS AND TRAILERS

1986 Mack triaxle manure trk + access. 5,000 gal vac w/pony motor. 717-548-4153.

8' Reading contractor cap, \$600. 717-442-8168

1989 GMC 26,000 GVW 12' Flat bed 40,000 Mi. 8.2 Dsl, V.G. Cond., \$7,500 Bucks Co., 215-297-8354

1985 3/4 Chev 6.2 Dsl 4spd Rack Body \$2750 Bucks Co., 215-297-8354

1989 F Super Duty Dsl Mason Dump 8' Bed 124K Mi. \$9,000/OBO. 609-397-0156

Wanted: Drivers side door, manual controls for '94 Ford pickup truck. 570-758-2136

1977 IH 1750 dump dsl; 5+2, air brakes, setup for plow & spreader, \$3,900. Eves, 570-889-3859.

Trans MACK Duplex, \$500; Engine 6.2 Chevy Dsl, Has Bad Block Make Offer 717-795-9116 Before 5PM 717-732-2834 After 5PM. Ask for Jake

1980 33' Fruehauf Dump Trailer Roll-Over Tarp, PA Insp. \$8,750. 610-286-6981

Cat 1160 eng completely overhauled, new cam, shaft, crank turn, new bearing & pistons, no exchange necessary, \$4000. 717-938-3517

Myers snowplow, model C-825, power angle, truck mounting assmy w/lights & controls, complete setup for 1-ton 4x4 truck, \$1950. 717-938-3517

1989 Peterbilt 60 series, Detroit, 6" double bunk, 9 speed Fuller trans, air ride, cruise, AC, good rubber, good cond. \$12,500 obo 717-624-4342

471 Detroit engine, runs good, \$1500. 454 Chevy engine, runs good & other engines. 1-800-839-3338

1987 Volvo White tractor, single axle or with tag axle, conventional, 320 Detroit, fresh OH, good cond. \$4800. 717-776-7725

1982 Seagrave 100' ladder truck, 270 Det, \$2,000 OBO. 1982 Grumman 48 pass bus, 6V92 Det, A/T, part or whole, \$1,495 OBO. 717-624-1446.

1988 Mack MS250, 33 GVW, air brakes, cab cover, 195" WB, will take 22' box, \$3000. 570-467-3763

Army truck w/dump, duce & 1/2, multi fuel, 10 whl drive, v.good, \$5000. Del avall 716-595-3210

'80 F700 5 1/2 yd dump, many new parts, \$2900 obo. 717-921-8345

Mack truck parts for sale. Reasonable prices. 610-921-1971

1980 50 series Chevy truck including 14' flatbed dump w/side racks, new engine, exc. cond., \$4500. 410/836-1930

77 Ford 'F' 700 14' Dump Knaphelde Grain Live Stock Body Barn Door gates, Grain Chufes, Truck Body Tires Good Cond., \$4,900/OBO. 215-536-4252

1994 Freightliner parts, 60 series Detroit eng, rears, trans, ATC, 302-644-9300.

1989 Peterbilt 60 series Detroit, 63" double bunk, 9 spd Fuller, air ride, cruise, AC, good condition, \$12,500 OBO. 717-624-4342

2000 Chevy C3500, auto, dsl, 4-whl, 12' flatbed, tow package, cruise, tilt, PW, PD, AC, AM FM, transferrable warranty, 1800 mi., \$28,000. 410/795-0454.

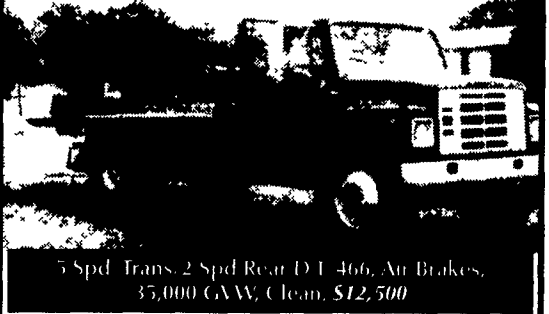
'94 Ford F450 Super Duty, dsl, 5 spd, 12' flatbed dump, good cond, \$10,000. 717-792-2751

'90 Int'l 4900 Series w/DT466 Motor, 6 spd, 20' Flatbed Dump, Good Cond., \$9000 717-792-2751

79 Mack Tri-axle 300 CH Eng., 17 1/2' Dump. \$19,500 717-468-9520

Trailer, '95, 18', GNF, 7,000 GVW. Cat 3406A eng. 13 spd trans, wetline, sqhd, RR, alum tanks. 610-489-0783.

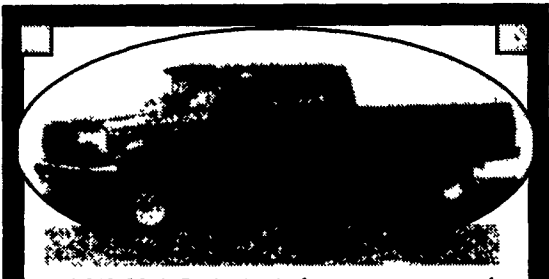
1983 Int. 21 Rollback with Winch (Jerr Dan)



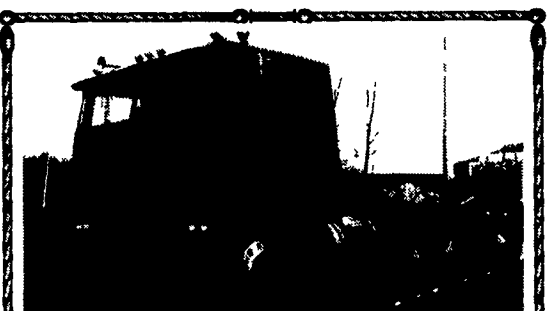
5 Spd. Trans. 2 Spd Rear D.T. 466, Air Brakes, 35,000 GVW, Clean. \$12,500
Contact: Webb's Super-Gro Prod. Inc., Mill Hall, PA 570-726-4525



'76 R Model Mack
6 Speed, Has 84 300 Engine, 155" Wheel Base, Camel Back, Wet Line, Jake Brake, Sliding 5th Wheel, Towing Hitch
\$6,000 OBO 717/507-2733



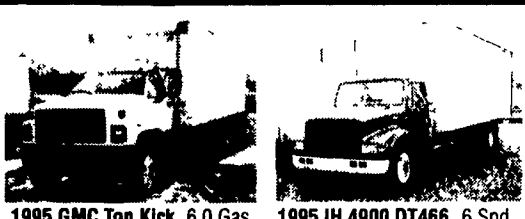
'95 F350-XL 4x4, 4 door, powerstroke diesel, 134k miles, excellent condition
\$15,000
Day# 410-838-3588
Night# 410-399-2018



1979 Peterbilt, 11/38 Rockwell on Peterbilt air ride 400 Cat 9 sp, sliding 5th, 24.5 rubber, approx 100,000 on rebuild, good brakes & tires, good over all condition. \$4,500 OBO
570-662-7182 anytime



1990 Chevy Suburban 4x4, Silverado, 5.7L-V8, Auto, PW, PDL, AM-FM-Cass, 3rd Seat, Dual A/C, Tailgate, 149K Miles, Beautiful & Clean! Runs Terrific. \$4,995. Others Avail. at Same Price!
717-774-5590
Double-D-Autos - York County



1995 GMC Top Kick, 6.0 Gas Allison Auto-25,000 GVW (No CDL) 39,000 Mi, A/C, 24 ft Van, Like New, \$20,900



1995 IH 4900 DT466, 6 Spd, A/C, Air Seat, 25,000, GVW, 24-26 ft Van, Liftgate, 92,000 Mi Excellent Cond \$21,900



1993 GMC W-7, 200 HP Diesel, 6 Spd, A/C, 33,000 GVW, Heavy Duty 18 ft. Snake Body Dump, 140,000 Mi, Clean, \$15,900



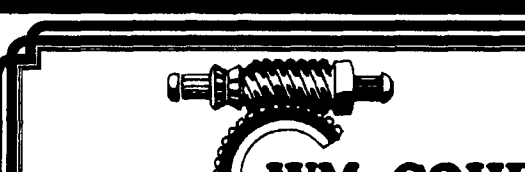
1995 IH 4900 DT466, 210 HP, 6 Spd., 33,000 GVW, A/B, A/C, Air Seat, Dual Tanks, 168" C to A, Ex Cond, \$16,500



1994 GMC Top Kick Cat Diesel, 5+2, 25,500 GVW, 186" C to A, Ex Cond, Will Shorten or Add Body, \$14,500 (Also 1995 GMC 20 ft Van Lift Gate)



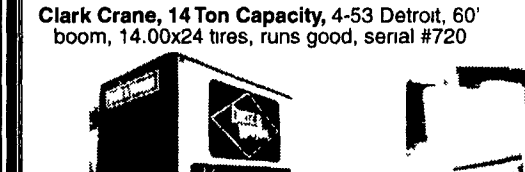
1995 IH 4900 DT466, 6 Spd, A/C, Air Seat, Dual Tanks, 33,000 GVW, 22 ft. van, L/G, 120,000 Mi, Clean \$19,500



1995 GMC W-4, Turbo Diesel, Auto, 14,250 GVW, 16 ft Van, Pull Out Ramp, Ex Cond 124,000 Mi, \$12,900



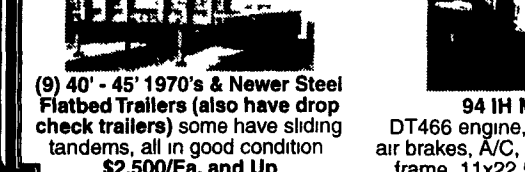
1993 GMC W-5, 185 HP, Turbo Diesel, 5 Spd, 18,000 GVW, 18 ft. Van with 3000lb Rail Gate, Off Lease, Clean, \$10,900



1998 E350 Ford Power Stroke, Diesel, Auto, 10,700 GVW, 14 ft Van, Off Lease, Ex Cond. \$13,900



1993 GMC W-5, 185 HP, Turbo Diesel, 5 Spd, 18,000 GVW, 18 ft. Van with 3000lb Rail Gate, Off Lease, Clean, \$10,900



1998 E350 Ford Power Stroke, Diesel, Auto, 10,700 GVW, 14 ft Van, Off Lease, Ex Cond. \$13,900

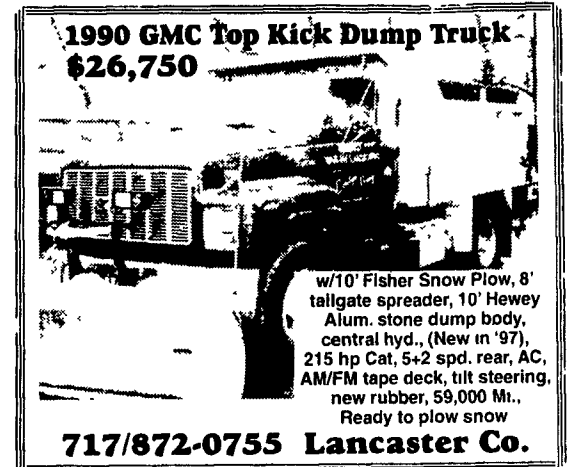
'90 Mack mid-liner, MS300P, 249,000 mi, 10 spd, 33,000 GVW, frame length 21', \$7000. Ask for Ted 570-784-3811

Mack 12,000 lb front axle, \$2000. 570-784-3811

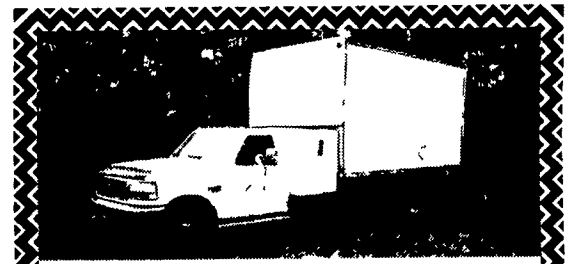
1988 Great Dan flat bed trailer 48x96 air ride spread axle, 3 tool boxes, 60% tires and brakes 11x22.5 rubber, recent floor winch track \$7,500 (717)367-6084.



1986 GMC 1 Ton With Little John Spray Unit And Foam Marker. Very Good Condition
\$7,000
845-932-8282



1990 GMC Top Kick Dump Truck \$26,750
w/10' Fisher Snow Plow, 8' tailgate spreader, 10' Hewey Alum. stone dump body, central hyd., (New in '97), 215 hp Cat, 5+2 spd. rear, AC, AM/FM tape deck, tilt steering, new rubber, 59,000 Mi., Ready to plow snow
717/872-0755 Lancaster Co.



96 Ford, 7.3 Power Stroke Engine, 5 Speed Trans, 14 Ft. Cargo Box 40' Sleeper Unit
717-694-3525 or 463-2659

MARTIN'S USED TRUCKS & EQUIPMENT INC.
560 Lampeter Rd. Lancaster, Pa. 17602
Robert Martin (717) 392-6266 (717) 299-6200
Reefers • Vans • Flatbeds • Used Parts
WE SERVICE WHAT WE SELL

WM. COHEN & SONS, INC.
"THE TRUCK PARTS STORE"
HEAVY DUTY TRUCK PARTS - NEW & USED - REBUILT REARS & TRANSMISSIONS
(610) 269-1298 Fax (610) 269-0787 www.cohentruckparts.com

11.1 60 series Detroit engines
12.7 60 series Detroit engines
8.2 non-turbo Detroit engines

1985 Mack Superliner
V8 Mack 4 Valve Engine, 7 Spd Trans, Mack Rears on Camelback Suspension, 11x24 5 Tires On Aluminum Budds

Ingersoll Rand Air Compressor, Type 30, 15 HP 3 Phase

Clark Crane, 14 Ton Capacity, 4-53 Detroit, 60' boom, 14.00x24 tires, runs good, serial #720

200 Gal. & 550 Gal. Plastic Tanks For Sale

Michigan Loader Model L30 Quick Coupler, Comes With 1 Yard Bucket and 60" Forks, Runs Excellent

4 I-Beams, 49' Long, 28" High w/12-1/2" Web

12' Reefer Body, under body refrigeration unit, Uses 220 electric Has damage

91 Isuzu NPR, 4 cyl turbo-diesel, auto, 14' reefer body, 110 electric, 195,969 mi

Aluminum Tanker/Trailers 7500 gal. and up

94 IH Model 4900 DT466 engine, 5 spd, single rear, air brakes, A/C, 32,900 GVW, double frame, 11x22 5 Budds, 254" W.B

(9) 40' - 45' 1970's & Newer Steel Flatbed Trailers (also have drop check trailers) some have sliding tandems, all in good condition \$2,500/Ea. and up

New Flatbeds Available Sizes currently available are 12', 14', 20', 22' and 24' Racks are also available.