

**Public Auction Register**

Closing Date Monday 5:00 P.M.  
of each week's publication  
Internet Sale Register will be updated  
every Sat. at 2:23 P.M.

**ATTENTION Auctioneers**

All sales register info needs complete address,  
street, town, county & state.

FRI MAR 23 - Good line of farm machinery, 4941 Bricker Rd., Chambersburg, Pa For David & Susan Miller Martin's Auct AU-1078L 717-532-5382

FRI MAR 23 - 930 Spring Machinery Consignment Sale, Penns Valley Livestock, Centre Hall, Pa Mel Hoover & John Esh, aucts AU0003-111L AU2055L

FRI MAR 23 - 10AM Horse Sale New Holland Sales Stables, Inc, 101 W Fulton St New Holland, PA 17557

FRI MAR 23 - 10AM Farm equip, trucks, dozer At 60 Meadow Rd, Quakertown Pa For Rudy Docktor Zettlemoyer Auct

FRI MAR 23 - 1 PM State Graded Feeder Pig Sales Carlisle Livestock Market Inc 548 Alexander Spring Rd Carlisle, Pa

FRI MAR 23 5PM Real estate In Mifflin Co 1 1/2 miles S of McClure, Pa Samuel C & Katie Byler Mark Glick auct AU-349-L

FRI MAR 23 & SAT MAR 24 - Antiques Held at Blue Ball Fire Hall, Blue Ball, Pa For John C Weaver Snyder's Auction Service AU-003489-L

SAT MAR 24 - Farm equip & tools Along Rt 234 at Biglerville, Adams Co, Pa For Lloyd & Jane Garman Martin's Auction Service AU1078-L

SAT MAR 24 - 8AM Fraley Auction Farm Machinery Consignment Sale at our farm 3 miles E of Muncy, Pa By Fraley auction Co 570-546-6907

SAT MAR 24 - 9AM Cumberland Valley Produce Auction Woodworking tool sale 4 miles N of Shippensburg, Pa

SAT MAR 24 - 9AM ranch home, tractor and personal property Mary Jane Shenberger Estate 4084 Columbia Ave, West Hempfield Twp, Lanc Co, Pa John M Hess AU-003484-L

SAT MAR 24 - 9AM Pocono Old-time farm equip association 5th annual consignment sale West End Fairgrounds, Rt 209, Gilbert, Pa Zettlemoyer Auction Cpo AU-001809-L

**PUBLIC AUCTION**  
**FARM MACHINERY & TRACTORS**  
**SILO-MATIC UNLOADER**  
**RISSLER BUNK FEEDER**  
**THURS., MARCH 8, 2001**  
**11 AM**

Location: 667 Puseyville Rd., Kirkwood, PA From Quarryville Rt 472 South approx 5 mi turn right onto Puseyville Rd to farm on left Colerain Twp., Lanc Co., PA

**Tractors**  
JD 2010 Gas Tractor, W.F. w/JD Loader  
1948 Oliver 88 Gas Tractor

**Farm Machinery**  
JD 1600 4B 16 Auto Spring Reset Plow, NH 520 Manure Spreader w/Endgate, NH 320 Baler w/Thrower, 2 Pipe Rack Wagons w/10T Running Gears, IH 183 4R Cultivator w/Rolling Shields, NH 30' 155 Bale Elevator 3 pt Snow Blower, 3 pt Grass Seeder, 12' Silo-Matic Silo Unloader, Rissler 30 Bunk Feeder, Rissler Conveyors, 23 PBZ Loop Comfort Stalks, Show Ease Water Bowls, 5 Lapp Waters, DeLaval Milking System for 43 Cows, DeLaval Milker Pump, 6 Westfalia Milkers w/DeLaval Claws, 4 DV 300 Milker Units, 5 Boumatic Flowstar Claws, Rubber Cow Mats, 18" Gutter Grates, (2) Cornell Gutter Cleaners, Uebler 810 Feed Cart, Fiberglass Feed Cart, 50 Nylon Cow Collars, Glass Pipeline, 36" Floor Model Barn Fan, 4 Barn Fans, Steel Gates & Fence Panels, Slant Bar Feed Fence plus numerous other items

**NOTE:** Auction to begin w/sm items followed by machinery Not a long sale - be there early Terms are cash or PA check Food stand

Terms by  
**C. ARDEN LANDIS**  
717-529-6644

Auction Conducted By  
Randal V Kline, Lloyd Kreider,  
Roy Good, Jr., Auctioneers  
Lic #2116, #513 #499  
717 445 4309



**PUBLIC AUCTION**  
**FRI., MAR. 16, 2001**  
**AT 10:30 A.M.**

LOCATED IN MIFFLIN COUNTY, 2 1/2 MILES EAST OF LEWISTOWN, PA.; TAKE GREEN AVENUE EXTENDED BECOMING BACK MAITLAND ROAD.

**FARM MACHINERY**

J.D. 3020 D tractor n.f. w/side console and new rubber, J.D. 720 D tractor n.f. good rubber w/J.D. 45 loader, N.H. 310 baler w/thrower, J.D. 1219 mower conditioner, N.I. 4150 rake like new, Grimm PTO tedder, 3 pt. 5 ft. rotary mower, Little Giant 32 ft. elevator, (good), 4 bale rack wagons 9 ft. wide, flat bed wagon, Anderson heavy duty PTO rock picker, M.F. 3 pt. 6 row corn planter, I.H. 3 pt. 6 row cultivator, I.H. and J.D. 13 disk grain drills, I.H. 5 tooth chisel plow, J.D. 3 pt. 4 bottom plow, Dearborn 3 pt. 2 way plow, J.D. 3 pt. subsoiler, Taylorway 8 ft. off set disk, J.D. 12 ft. transport disk, 14 ft. harrow, Brady stalk chopper, 8 ft. single cultipacker, 2 round bale spears for loader and bucket att's., 3 pt. pallet lift, 3 pt. lift crane, dry and liquid applicators, moisture hay tester, 36 in. dryer fan w/4 h.p. motor, a small load of misc. farm items.

**MACHINERY WILL SELL EARLY!**

**TERMS: CASH OR APPROVED CHECK**

**ELDER M. SINGLEY**  
717-248-0516

Food Stand  
Mark Glick - Auctioneer  
AU-349-L

**PUBLIC AUCTION**  
**FARM MACHINERY - TRACTORS**  
**PERSONAL PROPERTY**  
**WED., MARCH 21, 2001**  
**10 AM**

Location: 230 Sheaffers School Rd Ephrata, PA, (Farmersville), from Hinkletown, Rt 322 East at James & Stutzman Law Offices turn right onto E Farmersville Rd & continue to town of Farmersville turn left at crossroad onto S Farmersville Rd to Sheaffers School Rd turn left to farm on left West Earl Twp., Lanc Co

**Tractors**  
JD 2240 4WD Diesel Trac w/JD 175 Loader on Belting Wheels  
MF 184-4 4WD Diesel Trac on Belting Wheels - 1 Owner  
Farm Machinery

White 348 3B 16" Auto Reset Plow, 3 pt., JD AW 12' Trans Disc, Case 13' Trans Disc, 14' Steel Land Roller, JD 14' Field Cult., Case 14' Field Cult, JD 1240 Plateless 4RN Complanter w/Liquid & Dry Fert, PBZ 300 Gal Pull Type Field Sprayer w/12 Row Booms PBZ 3 pt 100 Gal Produce Sprayer w/Folding Boom, NH 273 Baler w/S S Pickup, Pequea Ground Drive Hay Tedder, Farmhand Wheel Rake, NH 680 Tandem Axle 2-Beater Manure Spreader; (2) 16' Flat Wagons, PBZ 3 pt Bale Spear, I & J 3 pt Danish Tine Cult., Baltic 3 pt Fert Spinner, Ferg 3 pt 2R Cult., Fidelity 25KW PTO Generator, 2 Acorn 16' & 14' Silo Unloaders, 30' 9" Silo Pipe & Gooseneck, 7' 3 pt Rotary Mower, (2) Dump Trailers, Wheel Horse 8 HP 4 Spd Lawn Tractor on Steel, Spring Wagon on Steel - gd cond., 2-Horse Steel Roller, NI 1R Tub Planter, Shovel Harrow, Cement Mixer, Monarch Kitchen Range

**Personal Prop. - Bicycles - Farm Items**

Old Wooden Maytag Shipping Box Butcher Bench, Hay Hooks, Old Window Sash, Barn Boards, 2 Old Hand Hewn Wagon Bed Holders Old Doors, Approx 3000 Tob Lath Carpet Roll, BIKES: Old Shelby Girls Bike w/Front Shock, (2) Old Raleigh 3 Spd Bikes w/Enclosed Chain Guard & Built in Generators, (2) JD 3 Spd Bikes, Other Assorted Old Bikes, Approx 10 12 New Bikes

Approx 2 wagon loads of sm farm items including misc tools, etc

**NOTE:** Auction will begin w/wagon items & bikes followed by farm machinery Terms are cash or PA check Food stand

Terms by  
**SAMUEL Z. & MIRIAM S. WEAVER**  
717-656-9385

Auction conducted by  
Randal V Kline, Lloyd Kreider,  
Roy Good, Jr., Auctioneers  
Lic #2116, #499, #513  
717-445-4309



**PUBLIC AUCTION**  
**FRIDAY, MARCH 16, 2001**  
**9:30 AM**

**TRACTORS & FARM EQUIPMENT**

LOCATION: 161 Stone Quarry Road, Leola, Pa, Just East of Brownstown on Rt. 772 Turn Right onto Stone Quarry Rd, First Farm on Left. From Rt. 23 in Leola, take Rt. 772 West just before Brownstown Turn Left onto Stone Quarry Rd, First Farm on Left. Watch for Sale Signs!

**\*\*TRACTORS\*\***

4507 Deutz 4 wh drive on rubber (Kelley Loader & Steel wheels Selling Separate), Deutz D 6806 w/4-Post Canopy (on rubber-steel wh. Selling separate), JD 3020 D NFE. (On Steel), JD 2010 Crawler Loader.

**\*\*EQUIPMENT\*\***

Farm Hand 817 Hammermill (Nice), NH 320 Baler w/thrower, IH 450 3-B Auto-reset Plow, 40' 6" Auger (PTO), 40' Zimmerman Elevator, NH 519 Spreader w/top beater, Betterbilt Vacuum Spreader, Capari PTO Irrigation Pump, 40 pcs. 3" x 20' long Pipe, 40 pcs 4" x 20' long Pipe, Misc. Pipe, Comet Gun & Fittings, 3 pt. Plastic Layer, Water Wheel Transplanter, 8' badger Manure Pump, 4 Small Silage Wagons, NH 717 Super Harvester w/2-row N & 1-row corn Heads, NH 717 Harvester w/2-row Head, Two NI 325 corn-pickers w/12 & 8 roll Husking Beds, NI 323 compicker, JD Feed Thrower, 4-Row IH 56 Cornplanter, JD 1240 Cornplanter, wagon w/Bale Racks, Flat Wagon w/10 T Gear, 5-Tooth 3 pt Chisel Plow, 5' Rotary Mower, 3 pt Field Cultivator, 4-Row S-Tine Cultivator, 2 & 4-row Cultivators, 2-Row Transplanter, Gehl Blower, Farm Trailer, Drag Disc, Cultipacker, Ontario Grain Drill, Side-delivery Hay Rake, Sprayer w/21' Boom, 1-Row Transplanter, Vegetable Conveyor, Two Outside Cattle Feed Bin Feeders, 275 gal Fuel Tank, Steel Wheels for Skid Loader, Dosatron Animal Medicator, 12 Hog Feeders (various sizes), Hog Wire mesh Flooring, Hog Farrowing Crates, Metal Cattle & Hog Slat Forms, Plastic Poly Tank, 1-Row McD Cultivator, Two Wagon Gears (w/wooden & steel wh), Platform Scales, Ward 106 Walking Plow, Dbl. & Single Trees, 3-18-18 Liquid Fertilizer, 2-Hole Buch Cornsheller, Pressure Washer w/elec. Motor, Torch Set, Lincoln Welder, Horse Breaking Cart, Scrap Iron, Chicken Coops, & Egg Baskets, Three Bee Hives, Honey Extractor, **BUTCHER ITEMS:** Enterprise Meat Grnder, Sausage Stuffer, Scalding Trough.

**New Alum. Diamond Plate Spring Wagon w/Cab**

**\*\*ANTIQUUE FURNITURE & HOUSEHOLD GOODS\*\***

Oak Bedroom Suite, {Chest of Drawers, Dresser, & Wash Stand}, Two Oak Beds, Two drop-leaf Tables w/Boards, Oak Bowed Ft. Dresser, Oak Wash Stand, Farm Table, Cedar Chest, Tall Butlers Desk, Wardrobe & Baby Cribs, CI Dinner Bell, Wood Butter Churn, Old Wanner Water Pump (Ephrata), Buffet, Old Benches, Maytag Wringer Washing Machine, Treadle Sewing Machine Gas Range, Apt. Size Freezer, Gas Space Heater w/pipe, Refrigerator, Two Sofa Beds, Strawberry Boxes & Picking Trays, Misc. Household Goods.

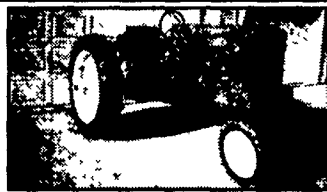
**SALE ORDER:** Starting with Furniture at 9:30 am, Not many small Items on wagon, we will be selling Equipment Early.

**AUCTIONEER NOTE:** Mr. Weaver is discontinuing Farming, mark your Calendars now, for a Sale you don't want to miss.

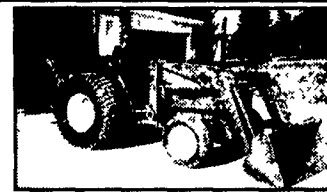
**TERMS:** Cash or Check with Proper ID.

SALE FOR:  
**WEAVER & ALMA FOX**  
(717) 656-7256

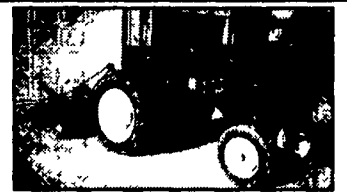
SALE CONDUCTED BY  
**WOLGEMUTH AUCTION (#2357)**  
Call Dennis (717) 656-2947 FAX (717) 656-6011  
<http://www.wolgemuth-auction.com>  
EMAIL: wolgemuth-auct@juno.com  
**Bob Wolgemuth & John Hess**



JD 40 NF



JD 970



JD 40 WF

**OUTSTANDING PUBLIC AUCTION**  
**4 TRACTORS - 1948 RESTORED PLYMOUTH CAR**  
**CASE KNIFE COLLECTION**  
**SATURDAY, APRIL 7, 2001 at 8:30 AM**

Located at 222 South Third St., McSherrystown, PA. DIRECTIONS: From Main St. (Route 116) turn south onto S. Third St. at McSherrystown Fire Hall and go short distance to sale site, where owner will offer the following.

LN J.D. 970 diesel WFE having 44 x 1800 rear turf tires w/80 J.D. loader w/bucket and a J.D. 8A backhoe w/12" & 18" buckets. Tractor is a one owner w/57 actual hrs. (backhoe to be offered separately and then as unit). J.D. "40" NF w/3 pt. & PTO having 10 x 34 rear tires (like new) front & side weights to be sold separately. J.D. "40" WF w/3 pt. & rear wheel weights. Has drawbar, PTO & cultivators. LN tires, 8 front end weights sold separately. Farmall Super "A" w/PTO, pulley, rear weights, starter, lights and power lift cultivators attached. J.D. 205 3 pt. rotary mower w/rear wheel; LN J.D. 246 3 pt. 2-row corn planter w/fert. attachment; J.D. 3 pt. 1 btm plow; Herd PTO seeder; 20-blade 3 pt. disk; 3 pt. rotary hoe; 3 pt. 6 ft. blade; 3 pt. subsoiler; 3 pt. "V" section harrow; 3 pt. homemade sweet potato hiller; Dunham 8 ft. cultipacker; pull type York stone rake; Myers 55 gal. sprayer with 3-1/2 hp engine, having dbl. piston pump w/hose & boom mounted on trailer; Myers 25 pump w/10 hp Dayton elec motor (used in car wash business); 8 hp Troy Bilt (Horse) w/elec start; Yellow Bird sod cutter; Auto Hoe tiller; Bolens "1250" hydrostatic lawn tractor w/2-4 ft. mower decks, has front mounted power driven Rolo-Bar rake and J.D. 80 lawn dump cart w/grass catching box built on; also available 9 hp blower motor - small disk - 3 ft. rear tine tiller & snow blade to fit above tractor. Parker SP lawn vacuum w/ B/S engine. Mighty mac mulcher w/ B/S engine; model SP 66 power rake w/ B/S engine and riding sulky Toro 11 hp riding mower with 32 in. mower deck & thacher; 2 wheel lawn cart; garden planter w/plates; push plow; potato plow; power weed wacker; McCullough Mini Mac chain saw w/case; Myers water pump w/ 1-1/2 hp motor; Bosch air hammer w/13 asst. size chisels; Lincoln air pressure grease pump w/gun (fits on 5 gal. bucket); boom crane w/3 ton jack, 1-1/2 ton floor jack; Stack-on tool box w/cabinet base; asst. wrenches, sockets, drill bits; large asst. small hand tools; Craftsman dbl end bench grinder; 2 - 2 1/4 ton chain hoists; LN shop vac; hand augers; chain binders; straw knife; egg baskets; old dinner bell; 2 & 3-prong forks; rubber tire wheel barrow; Have a Heart traps; steel traps; set of 1986 Dodge original wheels; 15 hp 3 phase elec motor; 4 - 1-1/2 3 phase elec motors; and many items too numerous to list. **Walk-behind Ditch Witch trencher.**

**Case Knife Collection:** Consisting of 72 various size knives, stones, steels & oil in original glass-front "Case" display cabinet - **Sold as a unit.**

**1948 Plymouth Special Deluxe** black 2 dr sdn, w/radio, wide white sidewall tires, nicely restored & runs well, ready for show or pleasure driving.

**Miscellaneous:** Old Enterprise #49 vegetable cutter; Dove-tailed dough tray stand; Nice oak case wall telephone; Wood rocking horse; and other collectible items too numerous to mention.

**Auctioneer Note:** All above items are in excellent condition, having been shed-kept with pride by Mr. Hartlaub. Mark date and plan to attend this fine auction.

**Inspection:** Thursday, April 5, and Friday, April 6, and Sale Day.

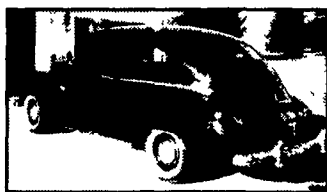
**Lunch Stand by St. Paul's Lutheran Church, Harney, MD.**

**Terms:** Cash or Good Check. Out-of-State checks will need current letter of credit addressed to Burnell Hartlaub, unless known by owner or auctioneers.

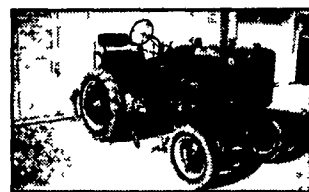
Owners:

**BURNELL & PAULYNE HARTLAUB**  
Phone: 717-632-7117

**Dennis J. Plunkert, Auctioneer**  
717-359-4489 AU-001102L  
**Robert G. Flickinger, Auctioneer**  
717-624-8036 AU-003692L



1948 Ply.



Super A



Case Knives