

North Atlantic Eggs

Atlanta, Georgia
Report Supplied by USDA
February 28, 2001

Prices were unchanged in all areas. The market tone was about steady to steady on white eggs and unsettled on brown eggs. Demand was light to moderate, mostly light, although better where features were a factor. Supplies were adequate to ample on smaller sizes and were adequate on heavier weights. Breaking stock demand was only fair for adequate to fully adequate offerings. Light type hens were adequate to fully adequate for current requirements.

PHILADELPHIA: PRICES TO RETAILERS, SALES TO VOLUME BUYERS, USDA GRADE A AND GRADE A, WHITE EGGS IN CARTONS, DELIVERED STORE DOOR, CENTS PER DOZEN. RANGE. EXTRA LARGE .71-.73, LARGE .69-.71, MEDIUM .58-.61

BOSTON: PRICES TO RETAILERS, SALES TO VOLUME BUYERS, USDA GRADE A AND GRADE A, BROWN EGGS IN CARTONS, DELIVERED

STORE DOOR, CENTS PER DOZEN. RANGE: EXTRA LARGE 1.06-1.08, LARGE .95-.97, MEDIUM .79-.81

NEW ENGLAND: PRICES PAID TO PRODUCERS, CASES EXCHANGED, GRADE YIELD BASIS, BROWN EGGS LOOSE, AT FARM, CENTS PER DOZEN. RANGE: JUMBO 1.27-1.30, EXTRA LARGE .87-.90, LARGE .76-.79, MEDIUM .60-.63, SMALL .21-.24

Eastern Region Frozen Eggs

ATLANTA, GA.
Feb. 23, 2001

Report Supplied By USDA

Prices were unchanged on whites, unchanged to slightly higher on whole, and ranged slightly higher on sugar and salt yolks but mostly unchanged when compared to a week earlier. Trading was only fair with supplies usually sufficient for most trade needs. The undertone was mixed and unsettled. Liquid and frozen eggs (ingredients included) processed under federal inspection in the Eastern region for the week ending February 17, 2001 were 7% more than last week, but 8

% less than a year ago.

WHOLESALE SELLING PRICES (CENTS PER POUND IN 30 LB. CONTAINERS)

TRUCKLOTS LTL (MIN. 25 CONT.) RANGE MOSTLY RANGE WHOLE 46-49 47-48 54-56 BLENDS (1) TFEWR 63-85 WHITES 35-37 41-54 SUGARED YOLKS (MIN 43% SOLIDS) 66-69 66-68 71-76 SALTED YOLKS (MIN 43% SOLIDS) 63-67 63-65 69-74

(1) - WHOLE PLUS YOLK PLUS SWEETENER, GENERALLY 28-32% EGG SOLIDS.

Delmarva Broiler/Fryer

ATLANTA, GA.
February 28, 2001

Report Supplied By USDA

Movement of ready-to-cook whole birds was light to fair and about normal for mid-week and the start of the lenten period. Seller offerings were generally adequate. Live supplies were about mod-

erate; weights remained mixed in a full range of light to heavy. Processing schedules were moderate. Less than trucklot asking prices were unchanged at 58 to 72 cents. Trade sentiment was steady to fully steady. In the parts complex, supplies were adequate to closely cleared. Boneless skinless breasts were generally available. Wings and boneless skinless thighs were often noted as in close balance.

ESTIMATED SLAUGHTER OF BROILER/FRYERS IN DELMARVA (000)

ESTIMATED ACTUAL AVG. WEIGHT ACTUAL AVG. WEIGHT 02/28 02/26 02/26 02/21 02/19

2,290 2,096 5.07 2,264 5 01

BROILER/FRYER CURRENT NEGOTIATED PRICES FOR IMMEDIATE DELIVERY INCLUDES MOSTLY MULTIPLE-DROP SHIPMENTS OF BRANDED AND WING

TAGGED TO NEW YORK CITY FROM DELMARVA

BRANDED U.S. GRADE A RANGE 55-69 WEIGHTED AVERAGE 61.16 NO. OF BOXES 12,264 7 of 8 plants reporting.

Morrison's Cove Poultry & Rabbit

Martinsburg, Pa.

Report Supplied by Auction Monday, Feb. 26, 2001

ROOSTERS 3.00-5.75.

BANTY ROOSTERS 1.50-4.25.

BANTY HENS 2.00-3.75.

PIGEONS 2.75.

DUCKS 2.50-3.75.

GEESE 3.00.

BUNNIES 1.50-4.00.

RABBITS 8.00-11.50.

SEVERAL LARGE RABBITS 15.00.

FANCY BIRDS 3.50-4.75.

AUCTION EVERY MON., 7:30 P.M.

Are You Interested In Extra Farm Income?

We have swine finishing contracts available

We Offer

- Qualified Service Personnel
- Sound Genetic Program
- Building Management/Environmental Monitoring
- Facility Planning
- Technical Support
- Cash Flow Projections
- Competitive Contract Payments
- Purina Feeding Programs

For more information Call
1-800-518-6458 Ext. 292

Purina Mills, Inc.
Serving The Needs Of Agriculture

FREE REPORT REVEALS HOW TO HAVE A SUCCESSFUL TIMBER SALE... GUARANTEED!

Are you a Private Landowner in PA who owns 10 acres or more of woodland? If you are thinking about selling your standing timber - DON'T - until you read the FREE REPORT: "15 Secret Revealed That Will GUARANTEE a Successful Timber Sale!" This FREE report could be worth thousands of dollars to YOU! For your free timber sales report, call TimberLeads toll free 1-877-386-7595.

Limited Number Available

HAY, STRAW & GRAIN SALE

Every Thursday at 12 NOON

Vintage Sales

Stables, Inc.

(Rt. 30, Paradise, PA)

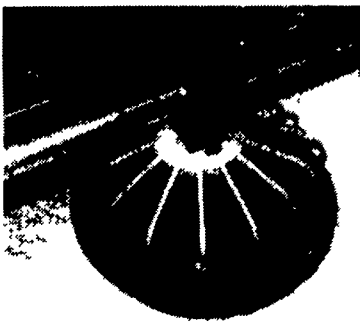
For more information

(717) 442-4181

(717) 768-8204



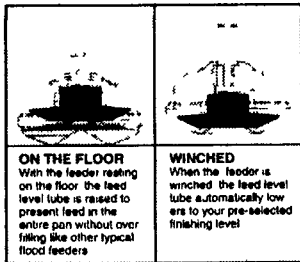
Boosts Your Efficiency and Products with these Innovative Products...



QUICK-START

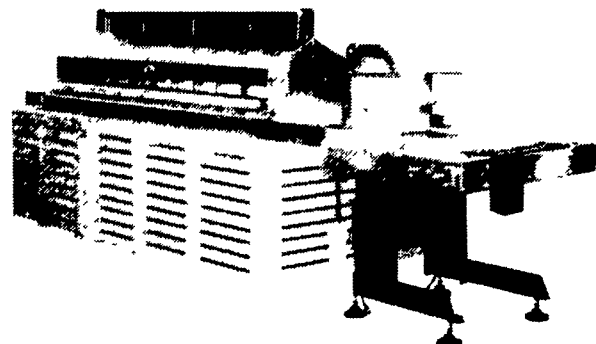
The Pax QUICK-START™ pan feeding system grows chicks into FINISHED broilers efficiently.

Start chicks with the feeder resting on the floor and the feed pan entirely filled. The Pax QUICK-START™ pan provides easy access to plenty of fresh feed - with no accumulation of stale feed in the drop tube - attracting even the smallest chicks to begin feeding right away



ON THE FLOOR
With the feeder resting on the floor the feed level tube is raised to present feed in the entire pan without over filling like other typical food feeders

WINCHED
When the feeder is winched the feed level tube automatically lowers to your pre-selected finishing level



SIDE BELT MECHANICAL EGG COLLECTION SYSTEM

Mechanical Nest

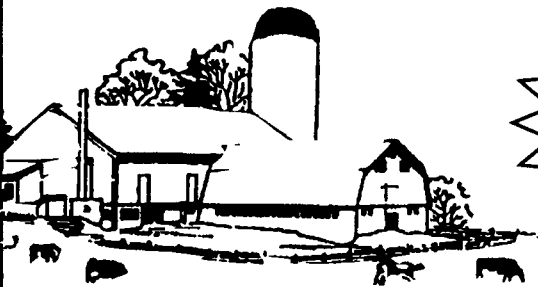
- Side belt design allows front access for egg collection in the event of a power failure
- Hinged closeout lid to restrict access
- Ventilated partitions allow fresh air flow through each nest
- Anti-roost guard with folded edges on all nests

Collection Table

- Choice of 1/2 or 3/4 HP motor
- Heavy steel construction - galvanized and powder painted
- Easy-to-reach variable speed belt control
- Pinch roll drive with cast iron bearings - designed for easy maintenance and servicing

WHITENING with ADVANTAGE FARM WHITE

- DRIES WHITE • NO WET FLOORS
- IS COMPATIBLE WITH DISINFECTANT AND FLY SPRAYS
- DOES NOT RUB OFF EASILY
- WASHES OFF WINDOWS & PIPELINES EASILY



10% CASH Discount through Month of March 2001 on Total Bill

BARN CLEANING SERVICE AVAILABLE WITH COMPRESSED AIR

To have your barn cleaned with air it will clean off dust, cob webs & lots of the old lime This will keep your barn looking cleaner & whiter longer

CALL US ABOUT ON THE FARM FLY CONTROL

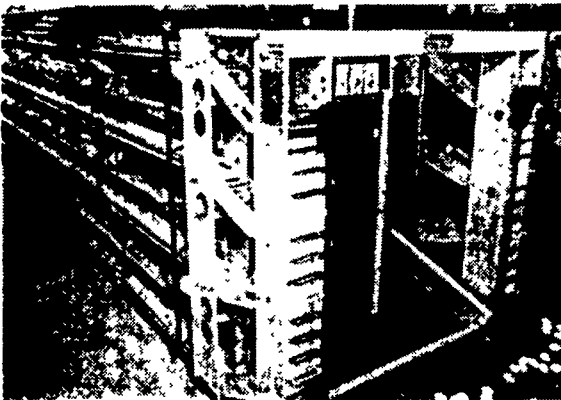
Serving Southeastern Pa. And More

BEITZEL'S SPRAYING

Witmer, PA 17585 717-392-7227 or Toll Free 1-800-727-7228 7:00 AM to 5:00 PM CERTIFIED COMMERCIAL APPLICATORS LICENSED 37 YEARS EXPERIENCE INSURED

5 Trucks For Air Cleaning And Whitewashing RADIO DISPATCHED TRUCKS

Barn Spraying Is Our Business, not a sideline. Spraying Since 1961



Multi-Deck

Layer Cage System

Available in 2,3,4,5,6,7 & 8 decks



Farmer Automatic

OF AMERICA, INC

Zeiset Equipment



2187 North Penryn Rd., Manheim, PA 17545

Phone (717) 665-4056

Fax (717) 665-2240