

# Corn Growers Continue Responsible Biotech Management

ST. LOUIS, Mo. — The nation's corn growers continue their responsible stewardship of crops from biotechnology, the National Corn Growers Association (NCGA) announced recently.

A recent survey shows corn growers overwhelmingly support insect resistance management (IRM) plans designed to ensure continued effectiveness of Bt corn.

IRM plans are designed to

keep the insects from developing resistance by providing a "refuge" of conventional corn where susceptible insects can breed.

Farmers are required to plant refuges of at least 20 percent of their acreage with conventional corn in the Corn Belt and 50 percent in the Cotton Belt.

In the survey, more than 90 percent of the growers said IRM plans are important and

believed they planted an appropriate refuge.

"The survey confirms that farmers are good stewards of technology and, when given appropriate information, they will do the right thing," said Fred Yoder, Plain City, Ohio, farmer and chairman of the NCGA Biotech Working Group. "Now as most farmers put the finishing touches on their 2001 planting decisions, this would be an ideal time to remember the IRM requirements."

The survey showed 87 percent of growers planted a refuge of 20 percent or more.

Another five percent of growers planted a smaller refuge, in compliance with previous standards.

For crop year 2000, growers also were required to plant their refuge within one-half mile of the Bt field or within one-quarter mile if they maintain the option to treat the refuge. The survey showed 82 percent of the growers met this distance requirement. Collectively, 71 percent met both the size and distance requirements.

The survey covered more than 500 growers in the Corn

Belt and Cotton Belt, all of whom planted Bt corn in 2000. An independent marketing research firm conducted the study for the Agricultural Biotechnology Stewardship Technical Committee (ABSTC), in cooperation with the NCGA.

ABSTC is a group of companies involved in the research, development and stewardship of ag biotechnology products. Participating companies include Aventis CropScience USA LP, Dow AgroSciences LLC, DuPont, Monsanto Co., Mycogen Seeds, Pioneer Hi-Bred International Inc., and Syngenta Seeds Inc.

Annual survey reports are required under the Bt Corn Industry IRM Plan, developed by ABSTC in cooperation with NCGA and adopted by the U.S. Environmental Protection Agency in January 2000.

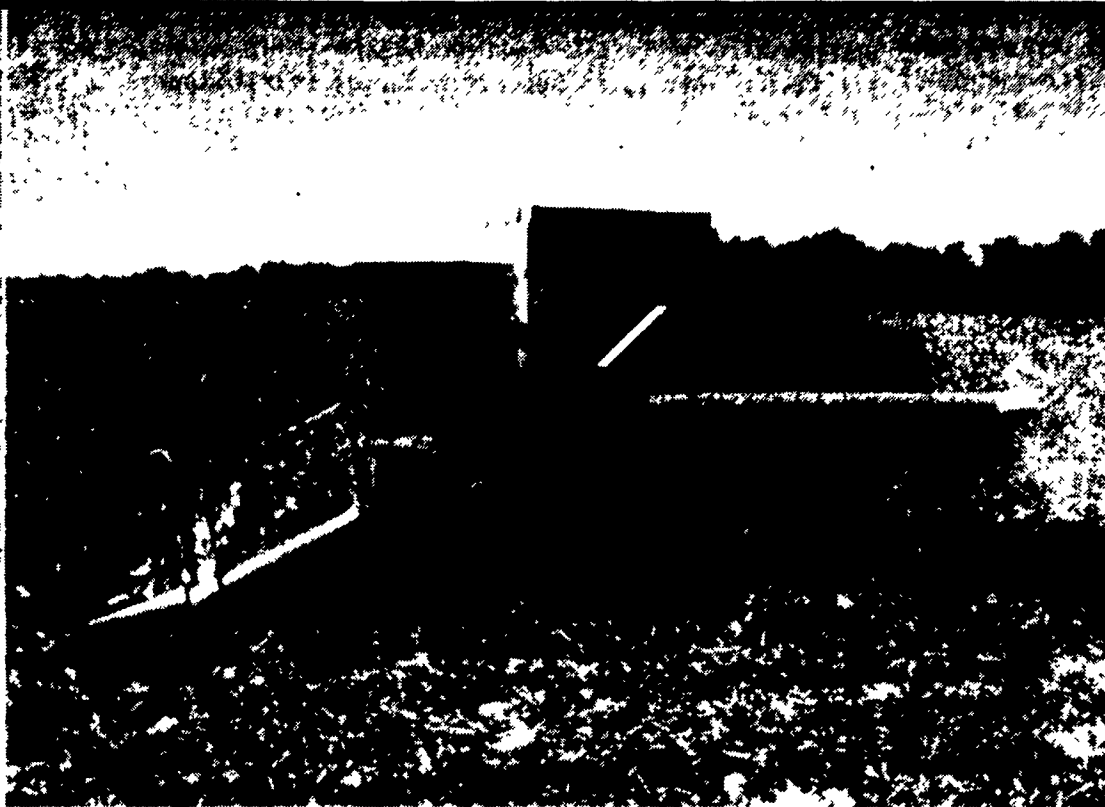
NCGA and ABSTC member companies are helping corn growers understand resistance management requirements for the 2001 season through:

- Videotapes and brochures for seed dealers to provide better information on "refuges" of conventional corn that must be planted near fields of Bt corn

- Increased communications through agricultural media

- Additional information on the NCGA's Website

- Increased communication through the extension service.



## START WITH GLEANER®. FINISH WITH MORE FROM THE FIELD.

**GLEANER® R72** The R72 rotary combine offers a big 330-bushel standard bin capacity, a powerful 330 hp Cummins engine and the latest in GLEANER® engineering. A new, high efficiency radiator gives the R72 tremendous cooling capacity in hot weather and stays cleaner longer. Only the GLEANER rotary combine system doesn't make your crop change directions before threshing. And you can expect even more.

- SMARTRAC® LATERAL TILT SYSTEM
- TWO-STAGE CLEANING SYSTEM
- ComforTECH™ CAB WITH TATTLETALE MONITORING
- INTEGRAL CHAFF SPREADER
- NATURAL FLOW PROCESSING
- EXCLUSIVE DISTRIBUTION AUGER SYSTEM

Come in for a closer look at the R72, along with details on the exclusive GLEANER warranty. It covers your Gleaner combine from header to spreader for 2 years, with unlimited hours and no deductible. When you start with advantages like this, you'll come out way ahead.

FIELDSTAR READY

**GLEANER®**  
Engineered For Better Returns

### GRUMELLI'S FARM SERVICE INC.

Quarryville, PA  
717-786-7318

### B. EQUIPMENT, INC.

Waynesboro, PA  
717-762-3193

### ZIMMERMAN'S FARM SERVICE, Inc.

1/2 Mile West off Rt. 501, On School Rd.  
Bethel, PA • 717-933-4114

### HERNLEY'S FARM EQUIPMENT, INC.

Elizabethtown, PA  
717-367-8867 • 1-800-564-2511

### C.J. WONSIDLER BROS.

Quakertown, PA New Tripoli, PA Oley, PA  
215-536-7523 610-767-7611 610-987-6257