

Corn Growers Insist On Verified Hybrids Before Planting

CORN TALK Farm Calendar

(Continued from Page 1)

Friday, March 9
Agronomic Herbicide and Insecticide Update, Lebanon County extension office.
Mid-Atlantic Tillage Conference, Dover, Del.

Tuesday, March 13
Clarion Crops Day, Limestone Fire Hall, noon-3 p.m.

Thursday, March 15
Soil Fertility and Productivity Workshop, Franklin County extension office, Chambersburg, 9 a.m.-3 p.m. Also Cumberland County extension, Carlisle, March 16; Lebanon County extension, Lebanon, March 23; and York 4-H Center, Bair, March 29.

Thursday, March 22
Crawford County Ag Day, Allegheny College, Meadville.

Wednesday, March 28
Pesticide Update Meeting, Holiday Inn, Grantville, contact Del Voigt, (717)

270-4391.

Thursday, July 12
Weed Tour, Russell E. Larson Agricultural Research Center, Rockspring, contact Dwight Lingenfelter, (814) 865-2242.

Tuesday, July 24
Annual Field Crop Diagnostic Clinic, Russell E. Larson Agricultural Research Center, Rockspring, contact Dwight Lingenfelter, (814) 865-2242.

ST. LOUIS, Mo. — The National Corn Growers Association (NCGA) is urging farmers to insist that seed companies verify that the hybrids being sold have been tested for the presence of Cry9C, the StarLink Bt.

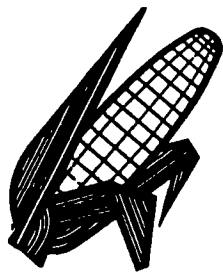
"It isn't a typical question growers ask when buying seed, but it's an extremely important one this season. USDA has said that no Cry9C corn would be sold or grown in 2001," said Fred Yoder. The Plain City, Ohio, farmer is chairman of the NCGA Corn Board's Biotechnology Working

Group. "The message is simple: Verify before you buy."

"This information will be readily available from seed companies. In late December, USDA recommended that seed companies sample and test all hybrid seed lots and all seed parent lines for the presence of Cry9C. Any seed testing positive for Cry9C would be channeled into feed or non-food industrial use. USDA also recommended that the seed companies provide the verification information to customers when customers ask for it.

"Every corn grower needs to take reasonable precautions to avoid StarLink appearing in the 2001 crop. Insisting on the USDA-recommended seed testing plan is the first step in assuring the integrity of the 2001 harvest," Yoder said.

For more information about NCGA and biotechnology, visit the NCGA's Website at www.ncga.com.



HAMMER MILLS AND ROLLER MILLS

6" Wide x 18" Dia
For Grinding High Moisture and Dry Grains

— Buy Direct And Save —

F.M.I.-Feedmobile

727 Furnace Hills Pike, Lititz, PA 17543

717-626-2680

Rollermills & feed equipment also available

Concrete Stave Silos

Our 10th Year of Superior Quality and Value

Checkered Tops Available

Door Frames and Silo Staves
3 Popular Brands Available.

For your extension and repair jobs

Concrete Stave Chutes Available

Nickel Mine Silo

406 E White Oak Rd,
Christiana, PA 17509

610-593-1172



ANNOUNCING OUR RETURN TO POWER



BFGoodrich Tires Farm & Ranch

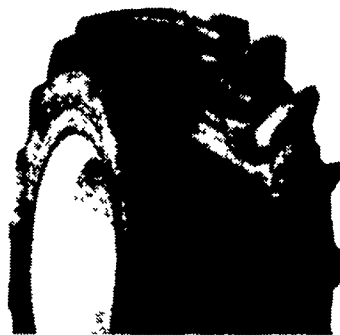


MICHELIN Ag & Industrial



"Great" B.F. GOODRICH
POWER GRIP BIAS R1
Tube Type - 45° Tread Design

13.6 x 28 6 ply..... **\$175**
18.4 x 34 6 ply..... **\$343**
18.4 x 38 6 ply..... **\$360**



"Greater" B.F. GOODRICH
POWER RADIAL 80
Radial R1W, Tubeless 45° Tread Design

13.6R28**..... **\$376**
18.4R34*..... **\$474**
18.4R38*..... **\$507**



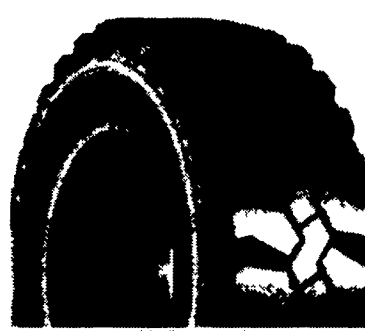
"Greatest" MICHELIN
AGRI BIB
Radial R1W, Tubeless, 45° Tread Design

13.6R28**..... **\$452**
18.4R34**..... **\$714**
18.4R38*..... **\$608**



B.F. GOODRICH
POWER STEER
3 Rib Bias, Tube Type

6.50-16 6 ply..... **\$47**
7.50-16 8 ply..... **\$62**
10.00-16 8 ply..... **\$102**



NEW MICHELIN **NEW**
SKID STEER
XZSL Radial, Tubeless

10R16.5 8 ply..... **\$261**
12R16.5 10 ply..... **\$377**
Non Directional
3-4 Times the Wear as Bias



MICHELIN
BACKHOE INDUSTRIAL
XM27 - R4 Radial, Tubeless

17.5R24..... **\$512**
19.5R24..... **\$616**
19.5R24 Reinforced..... **\$706**

OTHER TIRE SIZES AND TUBES ALSO AVAILABLE



We are proud to support FFA

HIGHLANDS' TIRE & SERVICE CENTERS

Prices Subject To Change



1257 Mt Holly Pike
Carlisle, PA 17013
717-243-1382
800-745-8069
717-243-6014 Fax

6551 Tilghman
Allentown PA 18106
610-481-0076
888-772-8353
610-481-0075 Fax

344 Green Spring Rd
Newville, PA 17241
717-776-5127
717-776-4484 Fax
800-745-8214

1607 Gabler Road
Chambersburg PA 17201
717-267-3600
877-222-0051
717-267-0034 Fax

233 North Main St
Shrewsbury PA 17361
717-235-8789
717-235-8590 Fax
1-800-792-2888

Berkeley Tire
79 State Street
Everett, PA 15537
814-652-2221
800-829-4213
814-652-2936 Fax

Allen Hoover Repair Inc.
RR1, Box 227
Mifflinburg, PA 17844
570-966-3821

Leola Tire
258 West Main St
Leola, PA 17540
717-656-2574
717-656-2574 Fax

Mar-Bar Tire Service
4285 Hanover Road
Hanover, PA 17331
717-633-6412

Smith's Farm Equipment
30 Acker Road
Newport, PA 17074
717-567-3562