

**WILLIAM H. WESSELS
USED CARS**

**CHECK OUR GOOD
SELECTION OF
MISCELLANEOUS
USED TRAILERS**
(From Landscape Models Up to
20-Ton Air Brakes)



UM 4582 1995 Model Load Rite, 16' Galv-Steel Frame with Landscaper Rates, 7,000 lb GVW Tandem Axle ... **\$2,250 OBO**

UM 4662 Zimmerman 12 Foot Trailer and Ramps for Skid Loader Transport with Electric Brakes on both Tandem Axles ... **\$1,450**

UM 4669 Beck Skid Loader Trailer with 14' Deck & Ramps, Tandem Axle with Surge Brakes & Pintle Hitch. Ideal for Farm Use, etc. **Only \$750**

UM 4670 Beck Skid Loader Trailer with 11 Foot Deck & ramps, 10,000 GVW ... **\$750**

1993 Eager Beaver 20 Ton Air Brake, 19' Deck Plus 5 Foot Beaver Tail, Good Shape, Ready for Work. ... **\$8,800**

**BINKLEY-HURST
BROS. INC.**



133 Rothsville Station Rd.
P.O. Box 0395, Lititz, PA 17543-0395
(717) 626-4705 1-800-414-4705 Fax (717) 626-0996



'54 Dodge M-37, 4x4, John Blue Spray System, 300 Gal., 35' Spray Width, 32,000 Miles, **\$3500** Will Separate. Make Offer • 717-529-2126

Specializing in Quality Built Trailers and Used Trucks



**HUFFMAN
TRAILER SALES**
FRIENDLY, PROFESSIONAL
SERVICE

Peanut hulls available by self-unloading trailers

Division of Huffman Litter Service



Rt. 11 NORTH, NEAR EXIT 251 •
HARRISONBURG, VA 22802

OFFICE: 540-434-3530
OR 800-825-2545



Featherlite - Hudson - Titan - Pace American - Apache Cattle Feeders

THE HONDRU EXPERIENCE

OVER 200 TRUCKS AVAILABLE FROM OUR 4 DEALERSHIPS

E-TOWN CHEVROLET

Oldsmobile Pontiac
Route 230 E-Town • 717-361-7776
877-924-6644

**2000 Chevy
4x4 Cab &
Chassis**



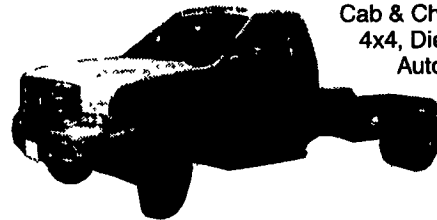
350 V8, Auto, AC,
PS, PB

- 99 Dodge Grand Caravan ES, AWD, V6, Auto, AC, Equipped
- 98 Dodge Ram 1500, Quad Cab, 4x4, V8, Auto, PW&L, AC
- (2) 99 Dodge Durango SLT, V-8, Auto, 4x4
- 99 Dodge Dakota Club Cab SLT, V-8, Auto, AC, PW&L, T&C
- 94 Dodge Ram 1500 SLT 4x4, Equipped
- 99 Jeep Grand Cherokee, V-8, Auto, AC, Equipped
- 97 Dodge Ram 1500 ST Club Cab, Auto, AC, V-8

PHILLIPS FORD

Route 72 Manheim • 717-665-3551
877-597-3551

2000 Ford F550



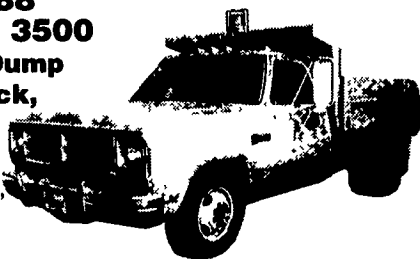
Cab & Chassis,
4x4, Diesel,
Auto

- 95 Ford E150 Super Cab 4x4 #1F247A
- 99 Ford F250, Diesel, 4x4, Crew Cab #1F347A
- 99 Ford F150 Super Cab 4x4, V-8, Auto 2 Available
- 98 Ford E150 Club Wagon #OPO580
- 97 Ford F150 4x4 Only 31,000 Miles #1D306A
- 96 Ford Bronco Eddie Bauer 4x4 #1F246A

E-TOWN DODGE

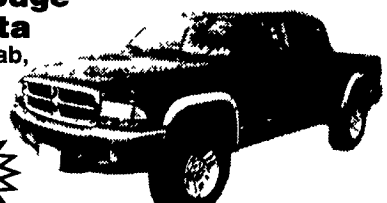
Route 230 E-Town • 717-367-6644
877-924-6644

**1988
Dodge 3500
4x2 Dump
Truck,**



Auto, V8,
48,000
Miles

**2001 Dodge
Dakota
Quad Cab,
4x4**



14 to
Choose
From

All prices include Rebates, Exclude Tax, Tag and \$55 Dock Fee

**LOADS OF USED PICKUPS
CALL ANY STORE FOR DETAILS**

Email - hondruauto@aol.com

OVER 20 CHASSIS IMMEDIATELY AVAILABLE FOR BODY INSTALLATION
AT OUR LOCAL BODY COMPANIES!

MANHEIM

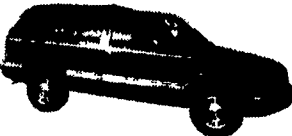
**CHRYSLER
GMC**

Route 72 Manheim • 717-665-2473
877-603-2473



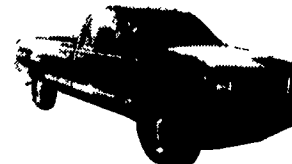
\$25,595

**1999 Ford
Expedition**
Eddie Bauer,
Equipped
Stock #OG378A



\$15,595

**1997 GMC
Jimmy SLE**
4 Dr., V-6, Auto
Equipped
Stock #OM021A



**1998 GMC
SIERRA SL**
Auto, AC, T&C,
AM-FM
\$17,395

**WILLIAM H. WESSELS
USED CARS**

811 Route 15 Dillsburg, PA
1-800-440-4433 1-717-432-2918
Notary Public - Temporary Tags